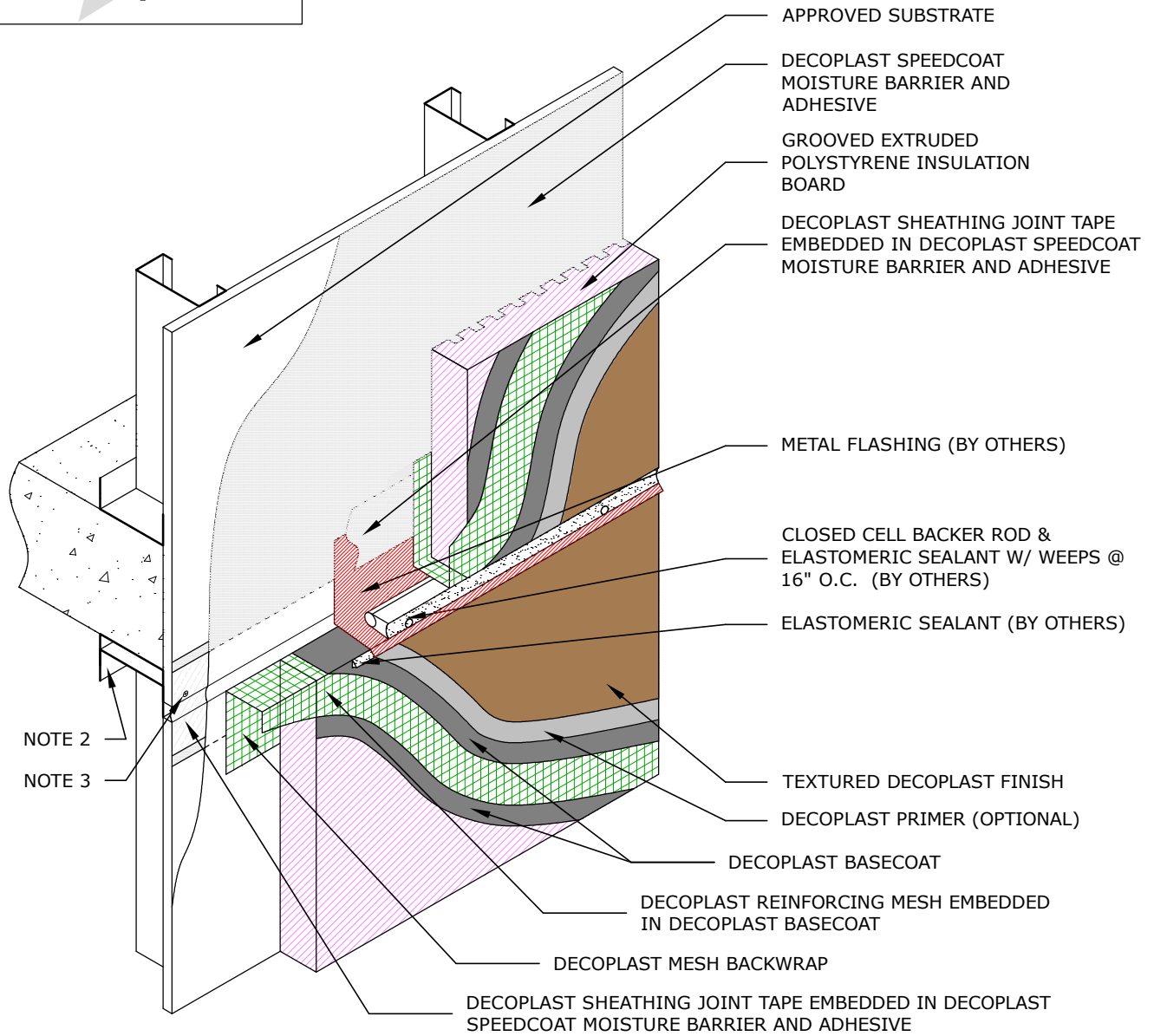




DDARS SPEEDCOAT XPS ci



NOTE 2
NOTE 3

DSWM E1.04B DDARS SPEEDCOAT XPS ci FLOOR LINE DEFLECTION SLIP JOINT

DECOPLAST DDARS SPEEDCOAT XPS ci - 6/1/2016

- NOTE:
1. To ensure a continuous air barrier across the building envelope, a continuous air seal should be made at each substrate change, joints/gaps, penetrations and dissimilar material terminations. These must be a consideration of the designer in the overall wall assembly design.
 2. Sliding stud connection. Slotted track typical.
 3. Sheathing screws for upper floor sheathing are to be fastened into track at under side of slab. Do not fasten screws for upper sheathing into studs of lower story.
 4. CAUTION: If nested double tracks are used for deflection, sheathing screws must not interfere with track sliding

Disclaimer: The design, specifications, and construction shall comply with all local building codes and standards. Decoplast installation guidelines are for general information and guidance only and Decoplast specifically disclaims any liability for the use of this design, and for design, engineering, or workmanship of any project. The assembly shall be designed to prevent condensation within the assembly. The designer and the user shall provide final drawings and specifications. Products shown other than those manufactured by Decoplast are shown for clarity of the Decoplast product only. Contact the manufacturer of such other products for installation instructions.