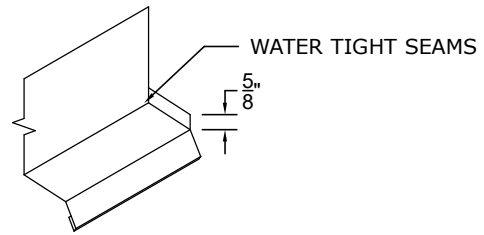


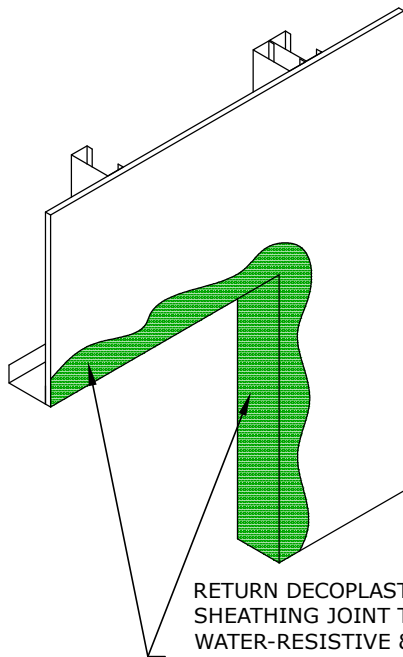
(PROFILE)



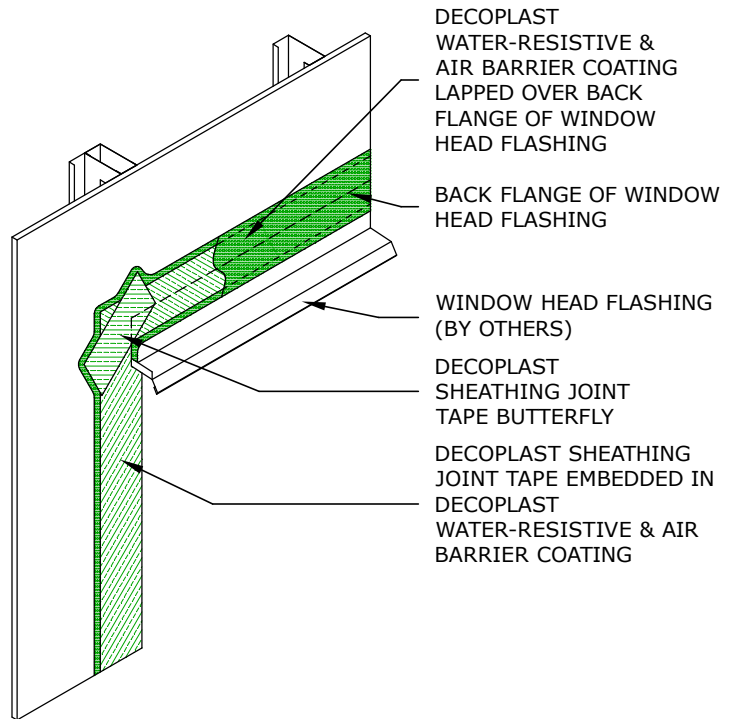
(PICTORAL)

METAL HEAD FLASHING PROFILE

HEAD FLASHING SHOULD BE FABRICATED IN THE PROFILE SHOWN. LENGTH OF FLASHING IS 1" LONGER THAN THE WIDTH OF THE WINDOW FRAME. END DAMS SHOULD BE TURNED UPWARD 5/8" AS SHOWN.



RETURN DECOPLAST SHEATHING JOINT TAPE & WATER-RESISTIVE & AIR BARRIER COATING INTO THE WINDOW HEAD PRIOR TO INSTALLING THE WINDOW HEAD FLASHING



## DSWM G1.03B DDARS HERITAGE ROUGH OPENING FLASHING PROCEDURE CONT.

DECOPLAST DDARS HERITAGE - 6/1/2016

- NOTE:
1. To ensure a continuous air barrier across the building envelope, a continuous air seal should be made at each substrate change, joints/gaps, penetrations and dissimilar material terminations. These must be a consideration of the designer in the overall wall assembly design.
  2. Finned window frames are installed before head flashing.
  3. Do not use plastic track at window heads.

Disclaimer: The design, specifications, and construction shall comply with all local building codes and standards. Decoplast installation guidelines are for general information and guidance only and Decoplast specifically disclaims any liability for the use of this design, and for design, engineering, or workmanship of any project. The assembly shall be designed to prevent condensation within the assembly. The designer and the user shall provide final drawings and specifications. Products shown other than those manufactured by Decoplast are shown for clarity of the Decoplast product only. Contact the manufacturer of such other products for installation instructions.