



Submittal Package

Project: _____

Location: _____

Architect: _____

General Contractor: _____

Applicator: _____

Submittal Info

___ DDARS Notched ___ DDARS Speedcoat ___ Coatings

___ DTS Heritage ___ DDS Direct ___ FRS Stucco

___ DDARS XPS NOTCHED ci ___ DDARS XPS Speed Coat ci

___ FRS Stucco XPS ci ___ Weather Barrier

___ System Data

___ Product Data

___ Specification

___ Details

___ Sample Warranty

Greenmaker Industries / Decoplast is a manufacturer of EIFS Paints, Primers, Textured Finishes, Venetian Plasters, and Adhesives & Basecoats. With over 30 years in the Coatings Industry Decoplast products have been applied on over a quarter billion square feet of wall surfaces throughout; North America, South America, Europe, Asia, and the Caribbean.

- Over 30 Years in the Coatings Industry
- No Product Failures
- 5 -20 Year Labor & Material Warranties
- Over 250 Million Square Feet Installed
- AIA Accredited Provider # 40107627



**Greenmaker
INDUSTRIES**

"Solutions without compromise"

697 Oakwood Avenue, West Hartford, CT 06110
voice: 860.761.2830 fax: 860.761.2831
www.decoplast.com



Find us in
MASTERSPEC
building specs done right

decoplast

Your Source for Exterior Insulation & Finish Systems

Welcome to Decoplast!

For over 30 years, Decoplast Systems have been used all over the world carrying out the beauty, elegance and sophistication intended by design. Shopping Centers, Single Family Homes, Assisted Care Living Developments, Franchises, National Chains, Restaurants, Office Buildings, Hotels, Sports Complexes and Museums are just a few of the examples.

Our mission has always been to supply the EIFS / Stucco industry with products of superior quality. This is done by incorporating the latest technology along with constant monitoring, testing and refining of our entire product line. In addition to product quality, Decoplast believes in supplying Architects, Developers, Contractors, Homeowners and all valued customers with unprecedented quality in service, while maintaining competitive pricing.

Today, Decoplast is focused on our natural environment. Our most recent commitment is producing materials used in "Green Building" design. A "Green Building" minimizes a structure's environmental impact, reduces operation costs and enhances occupant comfort and well-being. We truly recognize this importance and are dedicated to making a significant contribution.

Please visit www.DECOPLAST.com We welcome any inquires that you may have.



697 Oakwood Avenue, West Hartford, CT 06110
voice: 860.761.2830 fax: 860.761.2831
www.decoplast.com



QUALIFICATION STATEMENT

Date:

Submitted To:

Project:

Decoplast is pleased to provide the following qualification statement for your review.

With industry building science expertise, and provision to offer superior products, warranty protection, service, support and design, Greenmaker Industries / Decoplast provides a single source for all of your EIFS, Stucco, Masonry Construction and Coating needs.

We offer a full line of products that meet today's energy, performance and design requirements.

From building envelope design to sustainable maintenance and restoration, Decoplast provides a smarter alternative.

- *Over 30 Years in the Coatings Industry*
- *Zero product failure to date*
- *10 – 20 Year Labor and Material Warranties*
- *Over 250 million SF of product sold worldwide*
- *Miami Dade Code Compliant (NOA # 15-1118.06)*
- *FL Product Approval (FL16250.1-RO)*
- *AIA Provider # 40107627*
- *Texas Department of Insurance EC-79*
- *ICC ESR- 3428*
- *NFPA-285 Compliant (reference UL Labs Project # 4787376813)*
- *NFPA-268 Compliant (SWRI # 21604.01.209)*
- *ASTM-E119 Compliant (reference UL Labs Project # 4787376813)*

In an industry where the competition is cutting back,



ORGANIZATION

Greenmaker Industries / Decoplast is a manufacturer of EIFS Paints, Primers, Textured Finishes, Venetian Plasters and Adhesives & Basecoats. Decoplast products have been applied on over a quarter-billion square feet of wall surfaces throughout North America, South America, Europe, Asia, and the Caribbean.

KEY INDIVIDUALS

- President: John C. Di Stefano
- National Sales Manager: Mike Jalbert
- Mid-Atlantic: John Macluckie
- Northwest FL / Panhandle: Marty McDonald
- Southeast: Randall Cowart
- Florida: Brian Jordan
- Texas: Araceli De Leon
- Technical Service: Bobby Khan
- Customer Service and Inside Sales: Luisa DosSantos
- Head of Production and Product Development: Athos Perin
- Architectural Sales Support Mid Atlantic: Debra Bury
- Architectural Sales Support Northeast: Dominique Cipriani

COMPANY SPECIALTIES

- EIFS Exterior Insulation and Finish System
- Venetian Plaster
- Paints and Architectural Specialty Coatings
- Design Build Planning
- Jobsite Inspections

MANUFACTURING LOCATIONS

- West Hartford, CT
- Ispica RG, Italy
- Castelfranco Veneto, Italy

INDUSTRY AFFILIATIONS

- AWCI Association of Walls and Ceilings - 3rd Party Certified for EIFS
- Northwest Walls and Ceilings
- FAWCI Florida Walls and Ceilings
- PDCA Painting and Decorating Association



PERFORMANCE

With over a quarter-billion square feet of products sold worldwide and over 30 years in the coatings industry, Decoplast products have never had a product failure. With our stringent and renowned quality control procedures, from manufacturing to installation, Decoplast is one of the only products never named in a class action lawsuit for product failure.

WARRANTY

Decoplast is proud to offer the most aggressive and complete material and labor warranties in the industry. Decoplast has labor and material warranties that range from 5-20 years for both labor and material. We at Decoplast stand behind our product. With our Project Inspection Program, Decoplast requires that our systems are installed by a registered Decoplast applicator to insure that our products may last many years beyond the life of the warranty.

SHORT LIST OF PROJECTS COMPLETED

HOSPITALITY

- The Wynn Hotel and Casino - Las Vegas, NV (completed in 2007 /250,000 SF)
- Excalibur Hotel and Casino - Las Vegas, NV (completed in 2006)
- Sonesta Hotels and Condos - Sanibel Island, FL
- Hard Rock Hotel and Casino - Fort Lauderdale, FL (completed in 2004)
- Hilton Hotel Properties
 - Home 2 Suites (Gulfport, MS)
 - Home 2 Suites (Pensacola, FL)
 - Hampton Inn (Gulf Shores, AL)
 - Hampton Inn (Milwaukie, WI)
 - Hampton Inn (Gulfport, MS)
 - Hampton Inn (Bartonsville, PA)
 - Hampton Inn (Panama City, FL)
 - TRU Hotel (McDonough, GA)
- Walt Disney World – Orlando, FL (completed in 2001)
- Flamingo Hotel Casino - Las Vegas, NV (completed in 2002)
- Holiday Inn Express
- Hotel RIU Plaza - NY, NY
- Choice Hotels Group
- Marriott Hotel Group
 - Fairfield Inn (Plainville, CT)
 - Fairfield Inn (181 3rd Ave Brooklyn, NY)
 - Town Place Suites (Shalimar, FL)
 - Fairfield Inn (Atmor, AL)
 - Fairfield Inn (Saraland, AL)
 - Fairfield Inn (Meridian, MS)
 - Fairfield Inn (Gulfport, MS)



SHORT LIST OF PROJECTS COMPLETED CONTINUED

COMMERCIAL / RETAIL / MIXED-USE—RESIDENTIAL / RESTAURANT

- Conde Nast Building - Times Square, NY, NY (completed in 1997)
- Tiffany Company Store - Nationally Specified (85 Locations completed to date)
- Empire State Building (completed in 1984)
- Arizona Beverage Company Headquarters (completed in 2000)
- CVS Pharmacy - Nationally Specified (Over 250 stores completed to date)
- Old Navy
- Wendy's
- Anthropology Stores (Nationally Specified)
- Pottery Barn Stores (Nationally Specified)
- Altar'd State Retail Stores (Nationally Specified)
- McDonald's (Over 200 stores completed to date)
- Burger King (Over 125 stores completed to date)
- LA Fitness
- Dunkin Donuts
- Dunkin Donuts Stadium Hartford CT
- Shops @ Corpus - Corpus Christie, Texas
- Taco Bell
- O'Reilly Auto Parts
- Advance Auto Parts
- Auto Zone
- TJ Maxx
- Verizon Wireless
- Publix
- Petco
- Villagio at Yarrow Bay, Washington State (500,000 SF)

GOVERNMENTAL / CIVIC / EDUCATIONAL

- Naval Air Station Patuxent River, MD
- UNLV Library and Dorms – Las Vegas, NV (completed in 1998)
- Yankee Stadium (completed in 2008)
- City Field (completed in 2008)
- CIA Building – Langley, VA (completed in 2005)
- American Consulate – Rome, Italy (completed 1985)
- Yale University - New Haven, CT (completed in 1995)
- MOMA Museum of Modern Art (1992 and expansion in 2003)
- Arthur Ash Tennis Stadium -Flushing Meadows, NY



697 Oakwood Avenue, West Hartford, CT 06110
voice: 860.761.2830 fax: 860.761.2831
www.decoplast.com

CSI SECTION 09 25 13 Acrylic Plastering

SYSTEM OVERVIEW

This overview in italics is explanatory for the designer and specifier and is not part of the specification that follows.

DECOPLAST Cement Board Stucco is an exterior coating system for application to cement board wall coverings and soffits.

Substrate and a water resistive barrier are required behind the Cement Board Stucco Assembly

The Cement Board Stucco has four components:

- 1) Cementitious acrylic base coat, approximately 1/16" thick*
- 2) Fiberglass reinforcing mesh embedded in the base coat, over an additional strip of fiberglass mesh placed over cement board joints*
- 3) Acrylic Primer*
- 4) Acrylic or elastomeric textured, colored finish*

The Cement Board Stucco is for coating cement board on above grade vertical walls and soffits of buildings up to three stories. A water-resistive barrier and sheathing are required behind the cement board on vertical surfaces. Under some environmental conditions, thermal conduction of fasteners and framing can become evident in the finish as "telegraphing" or "ghosting", and efflorescence can occur from hydration products of the cement. These are natural phenomena which occur through no fault in the products. Also, planar irregularities in framing can be reflected as planar irregularities in the wall surface. Coarser finish textures and interruptions of plane by projecting decorative elements can make such irregularities less evident. As with other cementitious materials, minor cracking may occur, but can be reduced by control joints, just as in conventional portland cement plaster.

PART 1 - GENERAL

1.1 SECTION INCLUDES

- A. Installation of Decoplast base coat, reinforcing mesh and finish installed over on cement board or other approved by DECOPLAST

1.2 RELATED SECTIONS

- A. Section 03 00 00 - Concrete
- B. Section 07 90 00 - Joint Protection
- C. Section 08 50 00 - Windows

1.3 REFERENCES

- A. ASTM B117 - Test Method for Salt Spray (Fog) Testing.
- B. ASTM D2247 - Practice for Testing Water Resistance of Coatings in 100 Percent Relative Humidity.
- C. ASTM E84 - Test Method for Surface Burning Characteristics of Building Materials.
- D. ASTM E331 - Test Method for Water Penetration by Uniform Static Air Pressure Difference.
- E. ASTM E695 - Method for Measuring Relative Resistance to Impact Loading.
- F. ASTM E2485 - Standard Test Method for Freeze/Thaw Resistance of Exterior Insulation and Finish Systems (EIFS) and Water Resistive Barrier Coatings
- G. ASTM E2486 - Standard Test Method for Impact Resistance of Class PB and PI Exterior Insulation and Finish Systems (EIFS)
- H. ASTM G155 and G153 - Accelerated Weathering for Exposure of Nonmetallic Materials.

1.4 SYSTEM DESCRIPTION

- A. Description of DECOPLAST Cement Board Stucco
 - 1. An exterior coating system consisting of Base Coat with embedded Reinforcing Fabric Mesh, Primer (Optional), and Finish Coat.
- B. Decoplast Cement Board Stucco Functional Criteria:
 - 1. General:
 - a. Height is limited to three stories without prior project-specific approval by DECOPLAST. Efflorescence can occur from hydration products in the cement board. Under some environmental conditions, thermal conduction of fasteners and framing can become evident in the finish as "telegraphing" or "ghosting" and efflorescence can occur from hydration products of the cement. These are natural phenomena which occur through no fault in the products. Planar irregularities in framing will be reflected in planar irregularities in the wall surface and minor cracking of the finish can occur.
 - b. Substrate wall design deflection shall be limited to no greater than $L/360$.
 - c. The coating system and cement board sheathing do not form a weather barrier. A continuous water resistive barrier, installed to the exterior of the sheathing that is behind the cement board, and flashed to shed water to the exterior, is required.
 - d. Openings in the wall must be flashed to the water resistive barrier or to the exterior.
 - e. Building code conformance: The construction shall be acceptable for use under the building code in force in the jurisdiction of the project.
 - f. Install expansion joints at floor lines of wood framed construction, substrate changes and substrate expansion joints. Install vertical cement board control joints not more than 50 feet (15.24 m) apart. The cement board on each side of vertical joints shall be backed by a framing stud.
 - g. Pitch of sloped surfaces shall be 6/12 minimum. The maximum horizontal run of sloped surface shall be 8 inches (203 mm). For larger dimensions, consult Decoplast Technical Services.
 - 2. Performance Requirements
 - a. Shall meet the testing requirements of the Decoplast Product Performance Sheet.

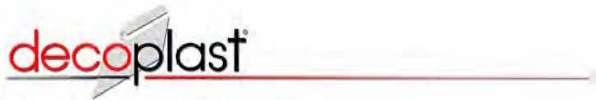
EDITOR NOTE: COORDINATE BELOW IMPACT RESISTANCE CLASSIFICATION REQUIREMENTS ACCORDING TO ASTM E 2486 - STANDARD TEST METHOD FOR IMPACT RESISTANCE OF CLASS PB AND PI EXTERIOR INSULATION AND FINISH SYSTEMS (EIFS)

- 3. Impact Resistance Classification: For EPS trim installed in addition to DECOPLAST Cement Board Stucco shall be classified in accordance with EIMA classification and impact ranges as follows.
 - a. Standard Impact Resistance, 25-49 in-lbs (2.8 – 5.6 J) Impact Range
 - b. Medium Impact Resistance, 50-89 in-lbs (5.7–10.1 J) Impact Range
 - c. High Impact Resistance, 90-150 in-lbs (10.2–17.0 J) Impact Range
 - d. Ultra-High Impact Resistance, >150 in-lbs (> 17.0 J) Impact Range

EDITOR NOTE: INDICATE JOINT WIDTH ON DRAWINGS FOR MOVEMENT AND EXPANSION AND CONTRACTION CONDITIONS. CONSULT WITH SEALANT MANUFACTURER FOR JOINT DESIGN RECOMMENDATIONS AND WITH EIFS MANUFACTURER FOR COORDINATION OF EIFS MATERIALS.

1.5 SUBMITTALS

- A. Samples: Submit samples for approval. Samples shall be of materials specified and of suitable size as required to accurately represent each color and texture used on project. Prepare each sample using same tools and techniques for actual project application. Maintain and make available, at job site, approved samples.
- B. Manufacturer's Warranty: Submit sample copies of Manufacturer's Warranty indicating Single Source



Responsibility.

1.6 QUALITY ASSURANCE

- A.
- B. Qualifications:
 - 1. Manufacturer: Shall have marketed Exterior Insulation and Finish Systems Coatings in United States for at least ten years.
 - a. Shall have completed projects of same building size and type as this project.
 - 2. Applicator:
 - a. Shall have attended a DECOPLAST Educational Seminar for installation of system.
 - b. Shall possess a current certificate of education.
 - c. Shall be experienced and competent in installation of plaster-like materials.

1.7 DELIVERY, STORAGE, AND HANDLING

- A. Delivery: Deliver DECOPLAST Cement Board Stucco products in original packaging with manufacturer's identification.
- B. Storage: Store materials supplied by DECOPLAST in a cool, dry location, out of sunlight, protected from weather and other harmful environment, and at a temperature above 40 °F (4.4 °C) and below 110 °F (43 °C) in accordance with manufacturer's instructions.

1.8 PROJECT / SITE CONDITIONS

- A. Installation Ambient Air Temperature: Minimum of 40°F (4°C) and rising, and remain so for 24 hours thereafter.
- B. Substrate Temperature: Do not apply DECOPLAST materials to substrates whose temperature are below 40 °F (4.4 °C) or contain frost or ice.
- C. Inclement Weather: Do not apply DECOPLAST materials during inclement weather, unless appropriate protection is employed.
- D. Sunlight Exposure: Avoid, when possible, installation of the DECOPLAST materials in direct sunlight. Application of DECOPLAST Finishes in direct sunlight in hot weather may adversely affect aesthetics.
- E. Parex materials shall not be applied if ambient temperature exceeds 120 °F (49 °C) or falls below 40 °F (4.4 °C) within 24 hours of application. Protect stucco from uneven and excessive evaporation during hot, dry weather.
- F. Prior to installation, the substrate shall be inspected for surface contamination, or other defects that may adversely affect the performance of the DECOPLAST materials and shall be free of residual moisture.

1.9 COORDINATION AND SCHEDULING:

- A. Coordination: Coordinate DECOPLAST Cement Board Stucco installation with other construction operations.

1.10 WARRANTY

- A. Warranty: Upon request, at completion of installation, provide DECOPLAST Cement Board Stucco Limited Warranty. See DECOPLAST warranty schedule for available DECOPLAST Warranties.

PART 2 - PRODUCTS

2.1 MANUFACTURERS

- A. Manufacturer: DECOPLAST, 697 Oakwood Avenue, West Hartford, CT 06110
- B. Components: Obtain components of DECOPLAST Cement Board Stucco from authorized distributors. No substitutions or additions of other materials are permitted without prior written permission from DECOPLAST for this project.

2.2 MATERIALS

A. Base Coats:

- [1. Decoplast Liquid Base Coat: 100% acrylic polymer base, requiring the addition of portland cement.
- [2. Decoplast Premium Dry Base Coat: Copolymer based, factory blend of cement and proprietary ingredients requiring addition of water.
- [3. Decoplast Decolastic Ground Coat: Copolymer based, factory blend of cement and proprietary ingredients, elastomeric watertight breathable requiring addition of water.

EDITOR NOTE: RETAIN BELOW STANDARD MESH FOR DECOPLAST CEMENT BOARD STUCCO FOR STANDARD IMPACT RESISTANCE CLASSIFICATION.

B. DECOPLAST Reinforcing Mesh (Impact resistance refers to installation of EPS trim):

- [1. Standard Mesh: Weight 4.5 oz. per sq. yd. (153 g/sq m); coated for protection against alkali. Standard reinforcement or for use with High Impact Mesh, or Ultra High Impact Mesh.
- [2. Short Detail Mesh: Reinforcing mesh used for back wrapping and details, and to embed in the Decoplast Base Coat & Adhesive.
- [3. Self-Adhesive Detail Mesh: Reinforcing mesh used for complex details
- [4. Intermediate Impact 10 Mesh: Weight 12 oz. per sq. yd. (407 g/sq m) Reinforcing mesh used with Decoplast Cement Board Stucco, to achieve EIMA intermediate impact strength.
- [5. High Impact 14 Mesh: Weight 15 oz. per sq. yd. (509 g/sq m) Reinforcing mesh used with Decoplast Cement Board Stucco; to achieve EIMA high impact strength.
- [6. Ultra-High Impact 20 Mesh: Weight 20 oz. per sq. yd. (678 g/ sq m) Reinforcing mesh used with Decoplast Cement Board Stucco; to achieve ultra-high impact strength.
- [7. Corner Mesh: Reinforcing mesh used as corner reinforcement; required with Ultra-High Impact 20 Mesh.

EDITOR NOTE: RETAIN BELOW AND SPECIFY LOCATIONS TO RECEIVE EIFS WITH HIGHER THAN STANDARD IMPACT RESISTANCE CLASSIFICATION.

Locations: _____; EIMA Impact Classification: _____

C. Decoplast Primers:

- [1. Decoplast Primer: 100% acrylic based coating to prepare surfaces for Decoplast finishes.

EDITOR NOTE: MODIFY BELOW TO SUIT REQUIREMENTS. CHOOSE ONE #1 FINISH TYPE

D. Finish:

- [1. Decoplast Decosil Finish: Factory blended, 100% acrylic siliconized polymer based finish, integrally colored. Finish type, texture and color as selected by Project Designer
- [2. Decoplast Standard Finish: Factory blended, 100% acrylic polymer based finish, integrally colored. Finish type, texture and color as selected by Project Designer
- [3. Decoplast Decolastic Elastomeric Finish: Factory blended, 100% acrylic polymer based elastomeric textured finish, integrally colored. Finish type, texture and color as selected by Project Designer

EDITOR NOTE: MODIFY BELOW TO SUIT REQUIREMENTS. CHOOSE ONE FINISH TYPE, TEXTURE, & COLOR WITH ACCESSORY MATERIALS TO CREATE DESIRED EFFECT.

- [4. DECOPLAST Select Finish [enter selected product]: Acrylic-based specialty finish. Finish type, texture and color as selected by Project Designer.

- E. Water: Clean, potable water
- F. Portland Cement: ASTM C150, Type I or Type I-II.

2.3 RELATED MATERIALS AND ACCESSORIES

A. Cement Board

- [1. Minimum ½ inch (13 mm) thick PermaBase® Brand Cement Board complying with ASTM C 1325
- [2. Minimum ½ inch (13 mm) thick Durock Brand Next Gen® Cement Board complying with ASTM C 1325
- [3. Other Approved by DECOPLAST in writing prior to the project

B. Substrate Materials

- [1. Sheathing shall be installed in accordance with its industry standards and applicable building code.
- [2. Gypsum Sheathing shall conform to ASTM C79, C1396, or C1177 glass mat gypsum sheathing, minimum thickness 1/2" (12.7 mm).
- [3. Plywood shall be not less than 15/32" (11 mm) thick, PS-1 Exposure 1 or Exterior grade.
- [4. Oriented strand board (OSB) shall be not less than 7/16" thick (11.1 mm), PS-2 Exposure 1.
- [5. For wood-based sheathing (Plywood and OSB), comply with APA-The Engineered Wood Association spacing recommendations for edge and end joints. Gap wood sheathing panels minimum 1/8".
- [6. Sheathing shall be protected from weather before, during and after application of DECOPLAST Cement Board Stucco.

C. Flashing: Refer to Flashing: Refer to Division 07 Flashing Section for flashing materials.

D. Water-resistive barrier:

- [1. Decoplast Liquid Weather Resistive Barrier water resistive barrier coating
 - a. Decoplast Liquid Weather Resistive Barrier Spray & Roll-On water resistive barrier coating. Two coats are required on plywood and OSB
 - b. Decoplast Speedcoat Trowel-On water resistive barrier coating. Two coats may be required on plywood and OSB
 - c. Decoplast Sheathing Tape: Non-woven synthetic fiber tape to reinforce Decoplast Liquid Weather Resistive Barrier roll on water-resistive barrier at sheathing board joints, into rough openings and other terminations into dissimilar materials available in 4 in, 6 in and 9 in widths
 - d. Decoplast Liquid Weather Resistive Barrier is covered by an intervening material such as building paper, See Section 2.3 C.
- [2. DuPont Tyvek® StuccoWrap® or DrainWrap or equal

E. Accessories:

- 1. Casing beads, expansion and control joints of exterior grade, rigid PVC in accordance with ASTM D1784 and ASTM D4216, as manufactured by Vinyl Corp. or Plastic Components, Inc.
- 2. Adhesive for setting vinyl trim before mechanical attachment through the cement board.

F. Sealant System:

- 1. Sealant for perimeter seals around window and door frames and other wall penetrations shall be low modulus, designed for minimum 50% elongation and minimum 25% compression, and as selected by Architect.
- 2. Sealants shall conform to ASTM C920, Grade NS.
- 3. Perimeter seal joints shall be a minimum width of 1/2 in (12.7 mm).
- 4. Sealant backer rod shall be closed-cell polyethylene foam.
- 5. Apply sealant to tracks or base coat.

6. Refer to DECOPLAST current bulletin for listing of sealants which have been tested and have been found to be compatible with Parex
7. Color shall be as selected by Architect.
8. Joint design, surface preparation, and sealant primer shall be based on sealant manufacturer's recommendations and project conditions.

EDITOR NOTE: PART 3 EXECUTION BELOW INVOLVES ONSITE WORK AND SHOULD INCLUDE PROVISIONS FOR INCORPORATING MATERIALS AND PRODUCTS INTO PROJECT. TYPICALLY, "CONDITIONS OF THE CONTRACT" ESTABLISH RESPONSIBILITY FOR "MEANS, METHODS, TECHNIQUES, AND SAFETY" REQUIREMENTS OF CONSTRUCTION WITH CONTRACTOR. SPECIFICATIONS SHOULD AVOID CONFLICTS WITH THIS CONTRACTUAL PRINCIPLE.

PART 3 - EXECUTION

3.1 EXAMINATION

- A. Verify project site conditions under provisions of Section 01 00 00.
- B. Compliance: Comply with manufacturer's instructions for installation of DECOPLAST products.
- C. Substrate Examination: Examine prior to DECOPLAST Base Coat installation as follows:
 1. Substrate shall be free of dust, dirt, laitance, efflorescence, and other harmful contaminants.
 2. Substrate construction in accordance with substrate material manufacturer's specifications and applicable building codes.
 3. Maximum deflection of the substrate shall be limited to L/240.
 4. Substrate shall be cured concrete (28 days minimum)
 5. Substrate shall have no irregularities greater than 1/4" (6.4 mm), and shall be sound and free of foreign substances, including paint, bond breakers, form oils, laitance, scaling and flaking.
 6. Unsatisfactory conditions shall be corrected before the application of the coatings.
 7. Painted surfaces shall have paint removed to achieve a substrate with 90% or more of the surface free of paint.
 8. Sanding surfaces shall be eliminated mechanically, then washed with clear water.
 9. Remove efflorescence using mechanical removal and/or a diluted acid solution followed by complete rinsing.
 10. Concrete surfaces shall be level and free of voids over 1/8" (3 mm) across. Glossy surfaces shall be dulled by chemical or mechanical means. Thoroughly remove all residues.
- D. Advise Contractor of discrepancies preventing installation of the DECOPLAST Architectural Coatings and Finishes. Do not proceed with the DECOPLAST Architectural Coatings and Finishes work until unsatisfactory conditions are corrected.

3.2 PREPARATION

- A. Protection: Protect surrounding material surfaces and areas during installation of system.
- B. Clean surfaces thoroughly prior to installation.
- C. Prepare surfaces using the methods recommended by the Manufacturer for achieving the best result for the substrate under the project conditions.

3.3 MIXING

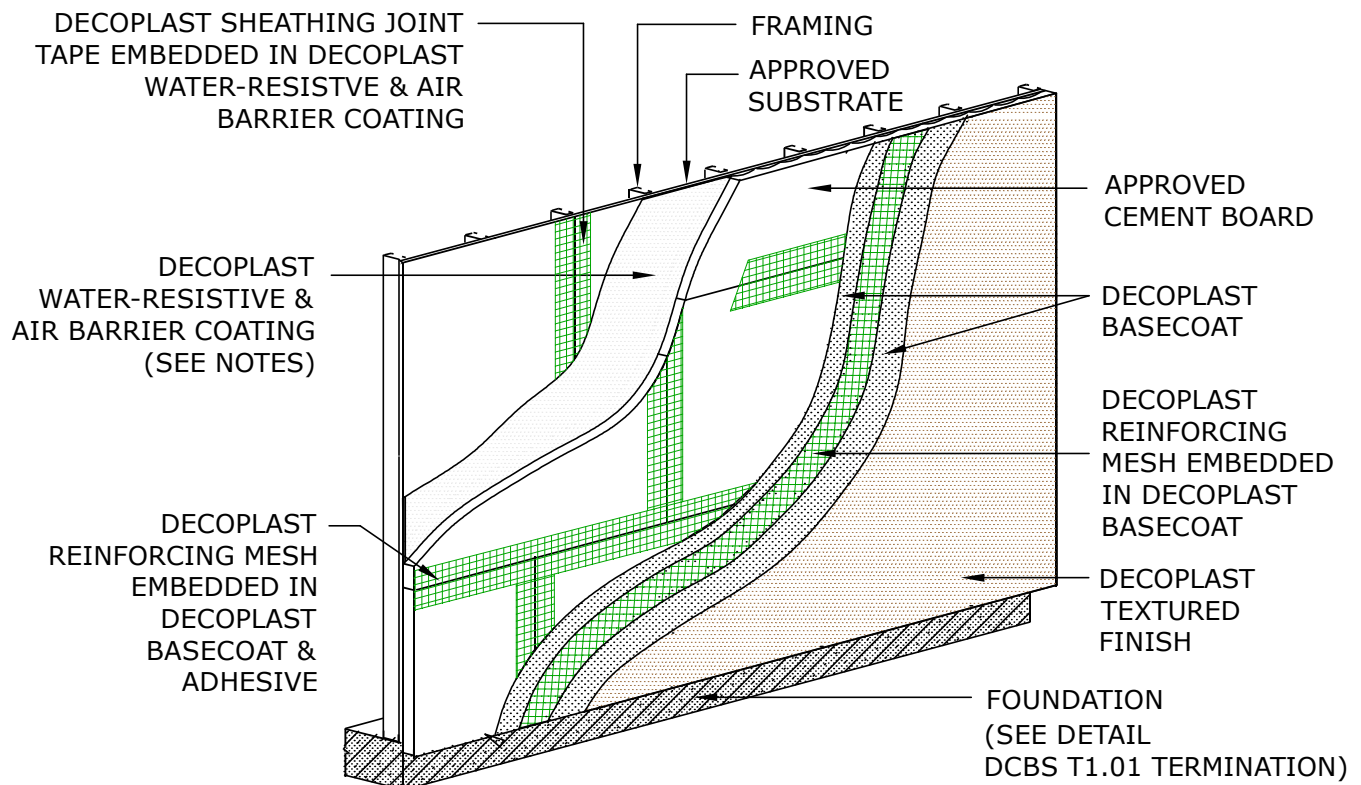
- A. Mix DECOPLAST proprietary products in accordance with Manufacturer's instructions.

3.4 APPLICATION

- A. Water Resistive Barrier
 1. DECOPLAST LIQUID WEATHER RESISTIVE BARRIER



CEMENT BOARD STUCCO



DCBS G2.01B CEMENT BOARD STUCCO FRAMED WALL APPLICATION WITHOUT DRAINAGE MEDIUM

DECOPLAST CEMENT BOARD STUCCO - 6/1/2016

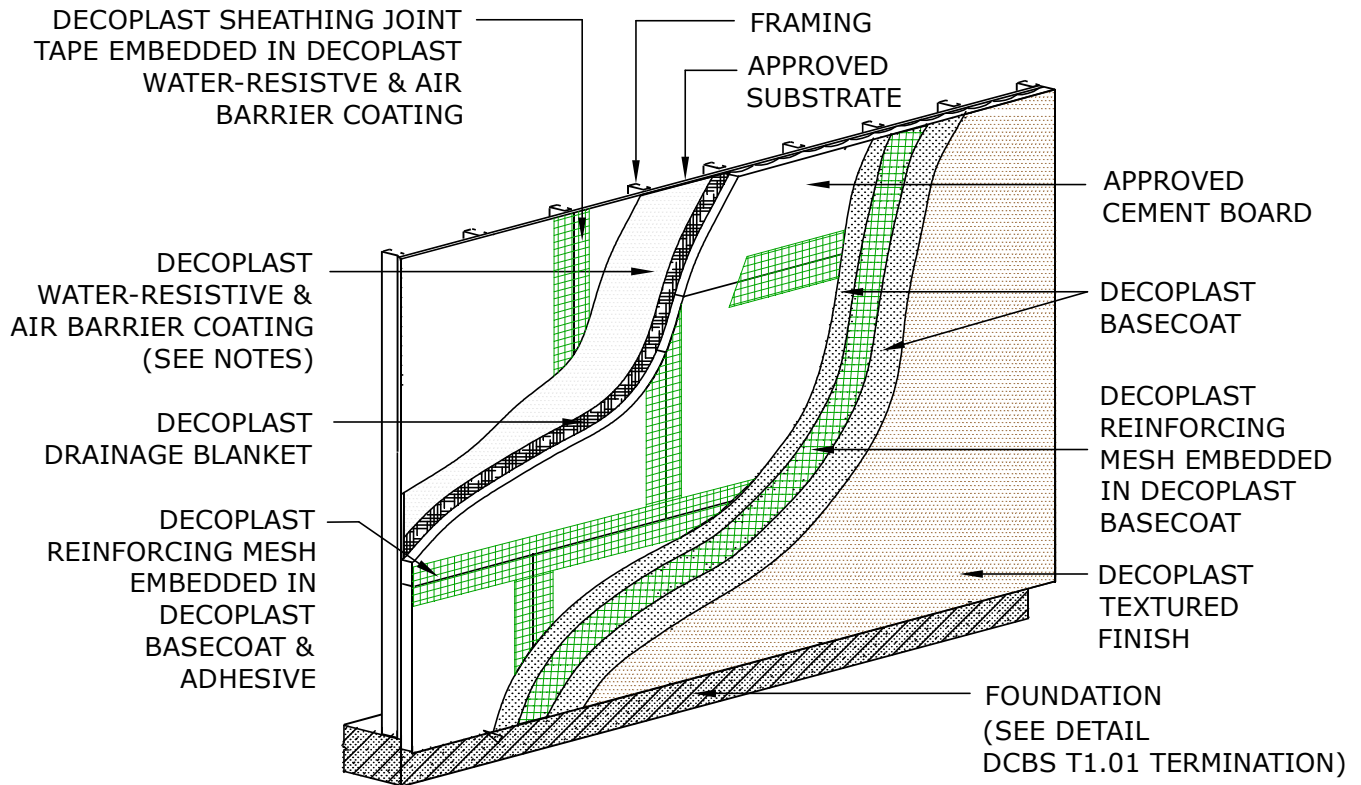
NOTE:

1. Details the same for either Steel or Wood Stud Framing
2. DECOPLAST Primer (Optional)
3. Depending on design requirements, WeatherTrek® (OR EQUAL) may be used.

Disclaimer: The design, specifications, and construction shall comply with all local building codes and standards. Decoplast installation guidelines are for general information and guidance only and Decoplast specifically disclaims any liability for the use of this design, and for design, engineering, or workmanship of any project. The assembly shall be designed to prevent condensation within the assembly. The designer and the user shall provide final drawings and specifications. Products shown other than those manufactured by Decoplast are shown for clarity of the Decoplast product only. Contact the manufacturer of such other products for installation instructions.



CEMENT BOARD STUCCO



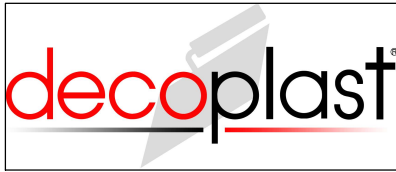
DCBS G2.01A CEMENT BOARD STUCCO FRAMED WALL APPLICATION WITH DRAINAGE BLANKET

DECOPLAST CEMENT BOARD STUCCO - 6/1/2016

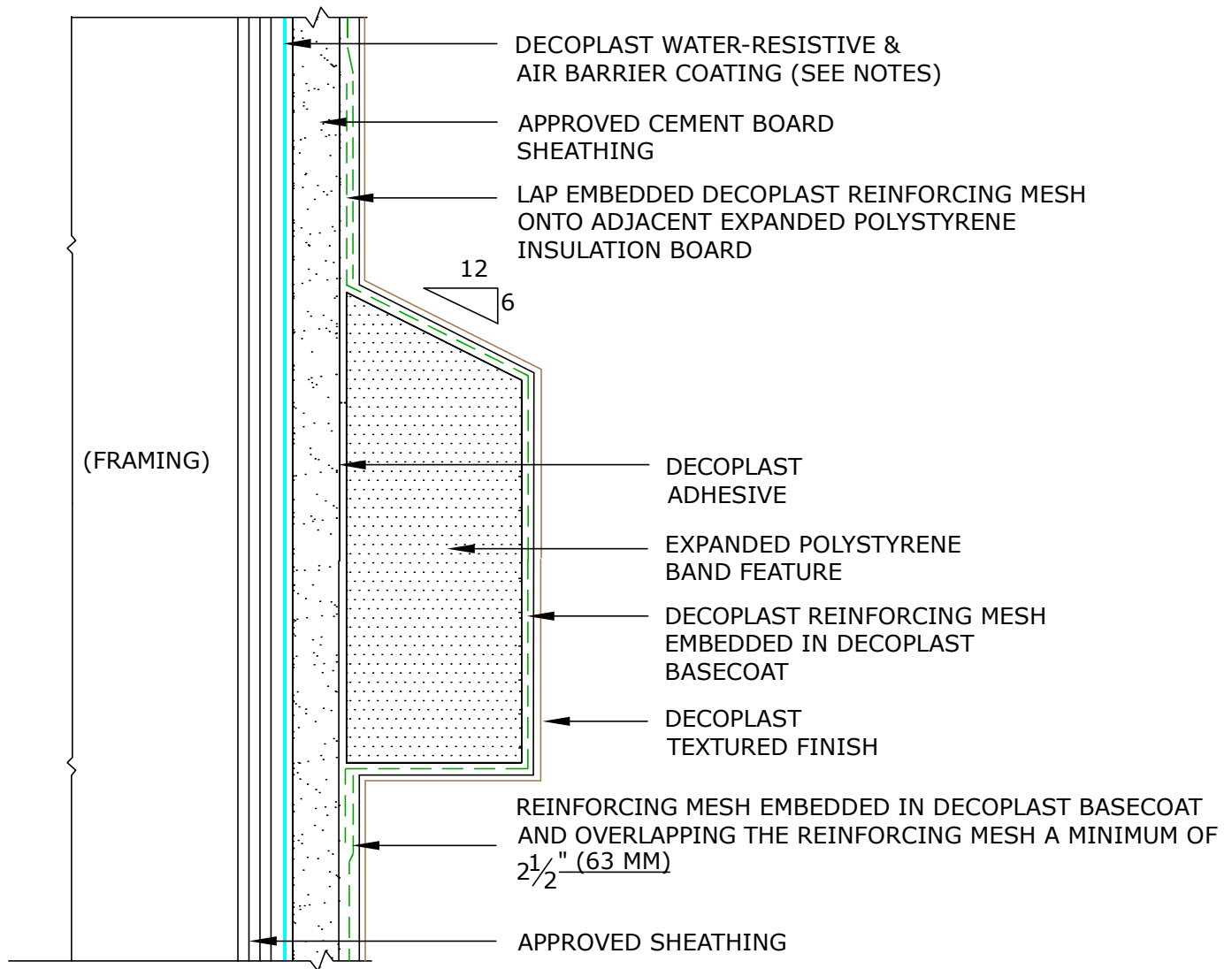
NOTE:

1. Details the same for either Steel or Wood Stud Framing
2. DECOPLAST Primer (Optional)
3. Depending on design requirements, WeatherTrek® (OR EQUAL) may be used.

Disclaimer: The design, specifications, and construction shall comply with all local building codes and standards. Decoplast installation guidelines are for general information and guidance only and Decoplast specifically disclaims any liability for the use of this design, and for design, engineering, or workmanship of any project. The assembly shall be designed to prevent condensation within the assembly. The designer and the user shall provide final drawings and specifications. Products shown other than those manufactured by Decoplast are shown for clarity of the Decoplast product only. Contact the manufacturer of such other products for installation instructions.



CEMENT BOARD STUCCO



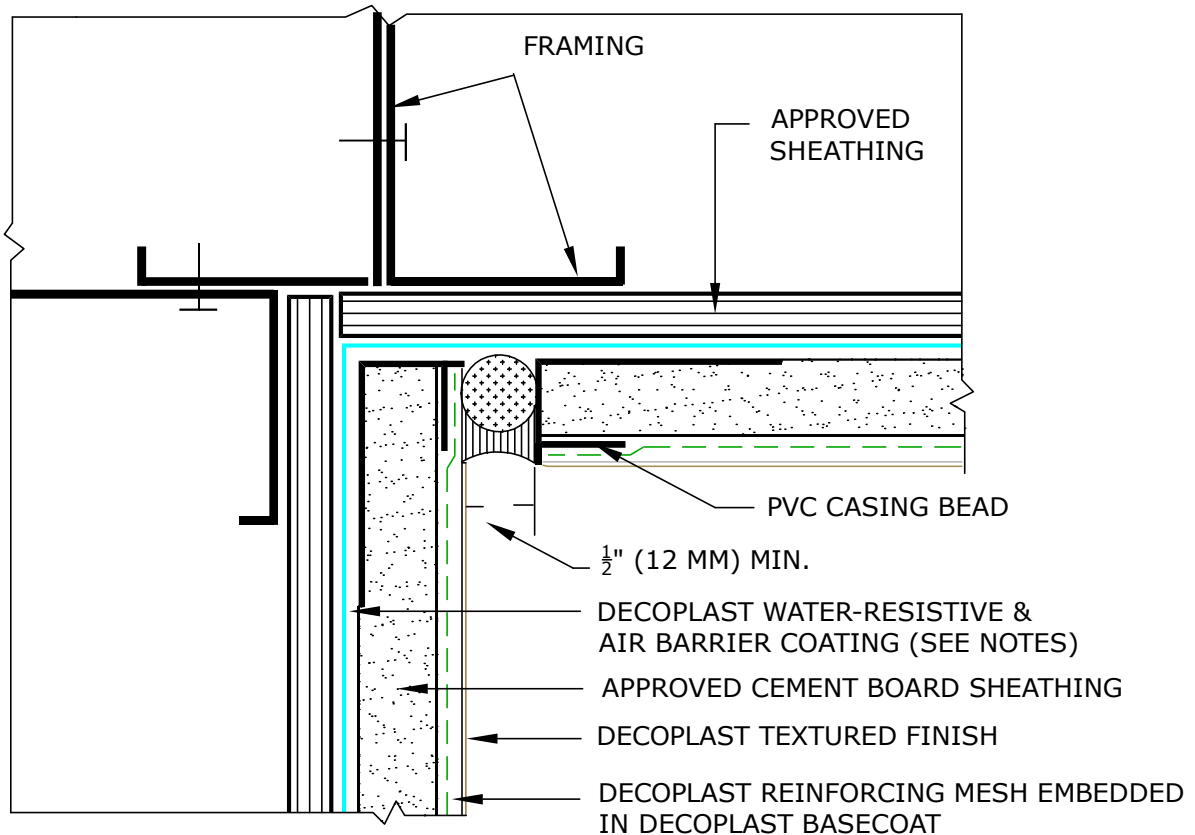
DCBS A1.01 CEMENT BOARD STUCCO DECORATIVE BAND

DECOPLAST CEMENT BOARD STUCCO - 6/1/2016

NOTE:

1. Details the same for either Steel or Wood Stud Framing
2. DECOPLAST Primer (Optional)
3. Depending on design requirements, WeatherTrek® (OR EQUAL) may be used.

Disclaimer: The design, specifications, and construction shall comply with all local building codes and standards. Decoplast installation guidelines are for general information and guidance only and Decoplast specifically disclaims any liability for the use of this design, and for design, engineering, or workmanship of any project. The assembly shall be designed to prevent condensation within the assembly. The designer and the user shall provide final drawings and specifications. Products shown other than those manufactured by Decoplast are shown for clarity of the Decoplast product only. Contact the manufacturer of such other products for installation instructions.



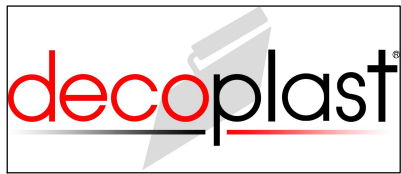
DCBS E1.01 CEMENT BOARD STUCCO EXPANSION JOINT AT INSIDE CORNER

DECOPLAST CEMENT BOARD STUCCO - 6/1/2016

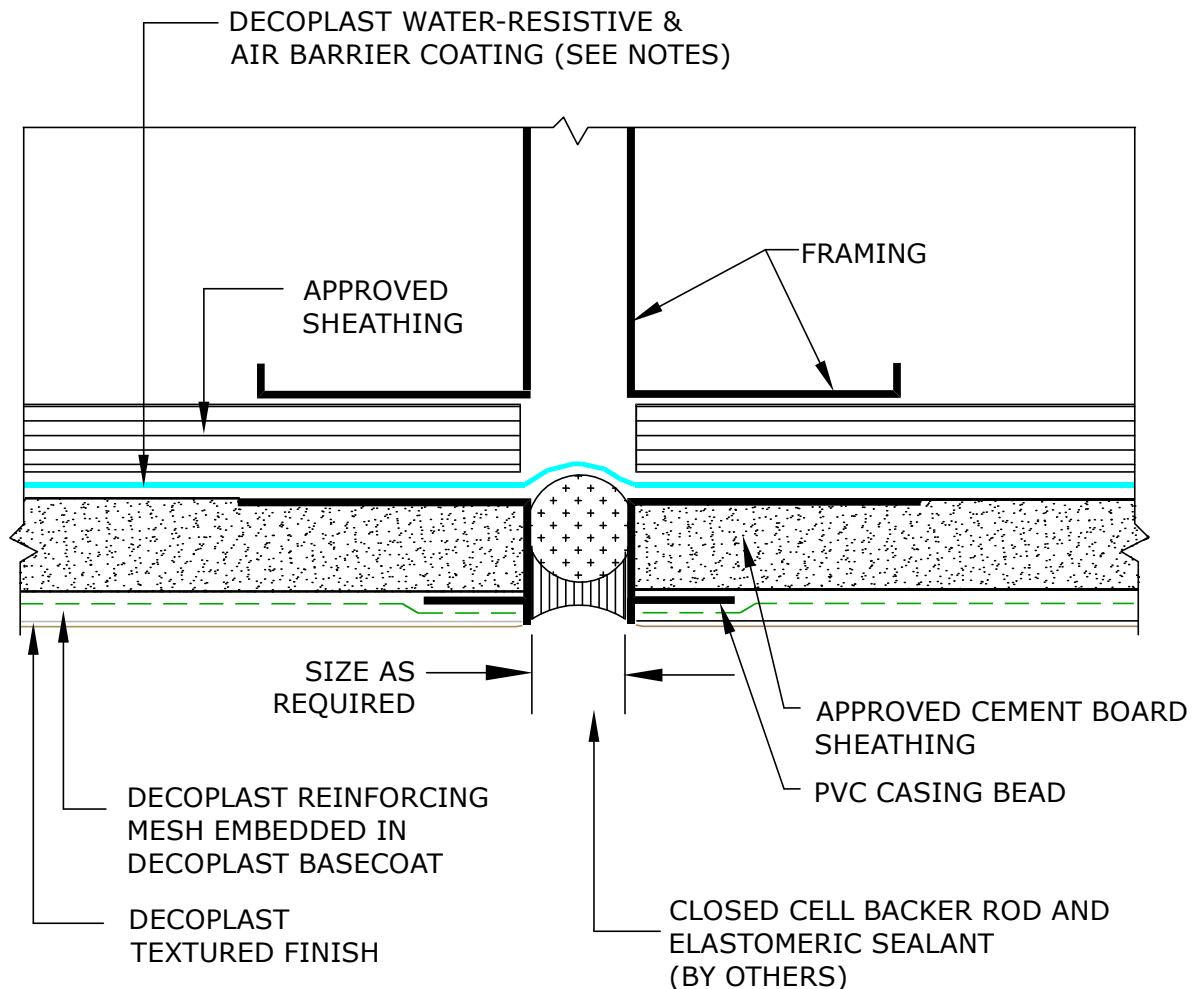
NOTE:

1. Details the same for either Steel or Wood Stud Framing
2. DECOPLAST Primer (Optional)
3. Depending on design requirements, WeatherTrek® (OR EQUAL) may be used.

Disclaimer: The design, specifications, and construction shall comply with all local building codes and standards. Decoplast installation guidelines are for general information and guidance only and Decoplast specifically disclaims any liability for the use of this design, and for design, engineering, or workmanship of any project. The assembly shall be designed to prevent condensation within the assembly. The designer and the user shall provide final drawings and specifications. Products shown other than those manufactured by Decoplast are shown for clarity of the Decoplast product only. Contact the manufacturer of such other products for installation instructions.



CEMENT BOARD STUCCO



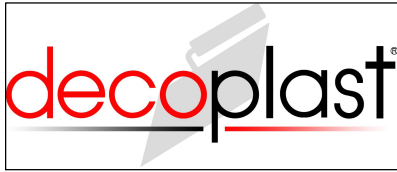
DCBS E1.02 CEMENT BOARD STUCCO EXPANSION JOINT

DECOPLAST CEMENT BOARD STUCCO - 6/1/2016

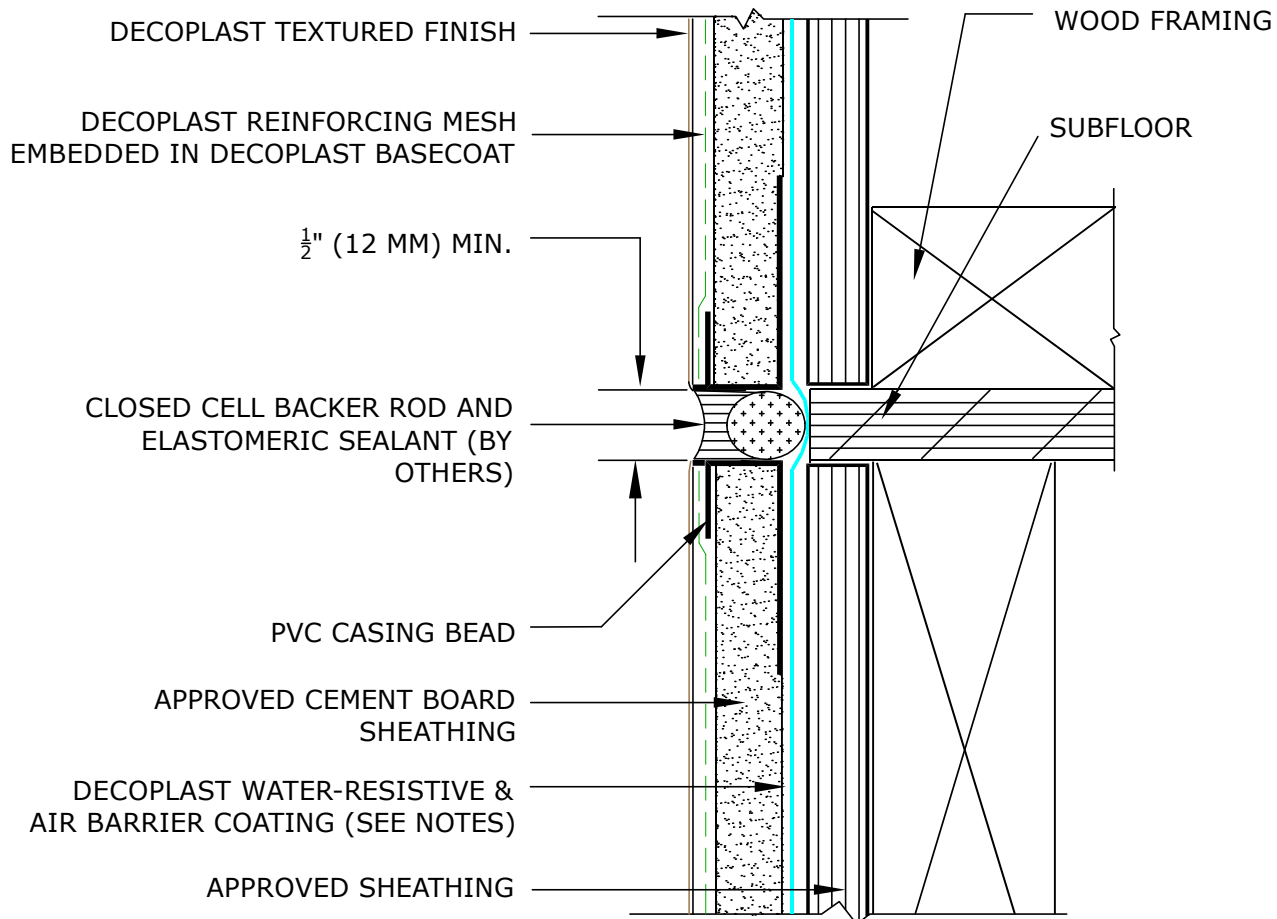
NOTE:

1. Details the same for either Steel or Wood Stud Framing
2. DECOPLAST Primer (Optional)
3. Depending on design requirements, WeatherTrek® (OR EQUAL) may be used.

Disclaimer: The design, specifications, and construction shall comply with all local building codes and standards. Decoplast installation guidelines are for general information and guidance only and Decoplast specifically disclaims any liability for the use of this design, and for design, engineering, or workmanship of any project. The assembly shall be designed to prevent condensation within the assembly. The designer and the user shall provide final drawings and specifications. Products shown other than those manufactured by Decoplast are shown for clarity of the Decoplast product only. Contact the manufacturer of such other products for installation instructions.



CEMENT BOARD STUCCO



DCBS E1.03 CEMENT BOARD STUCCO WOOD FRAME FLOOR LINE

DECOPLAST CEMENT BOARD STUCCO - 6/1/2016

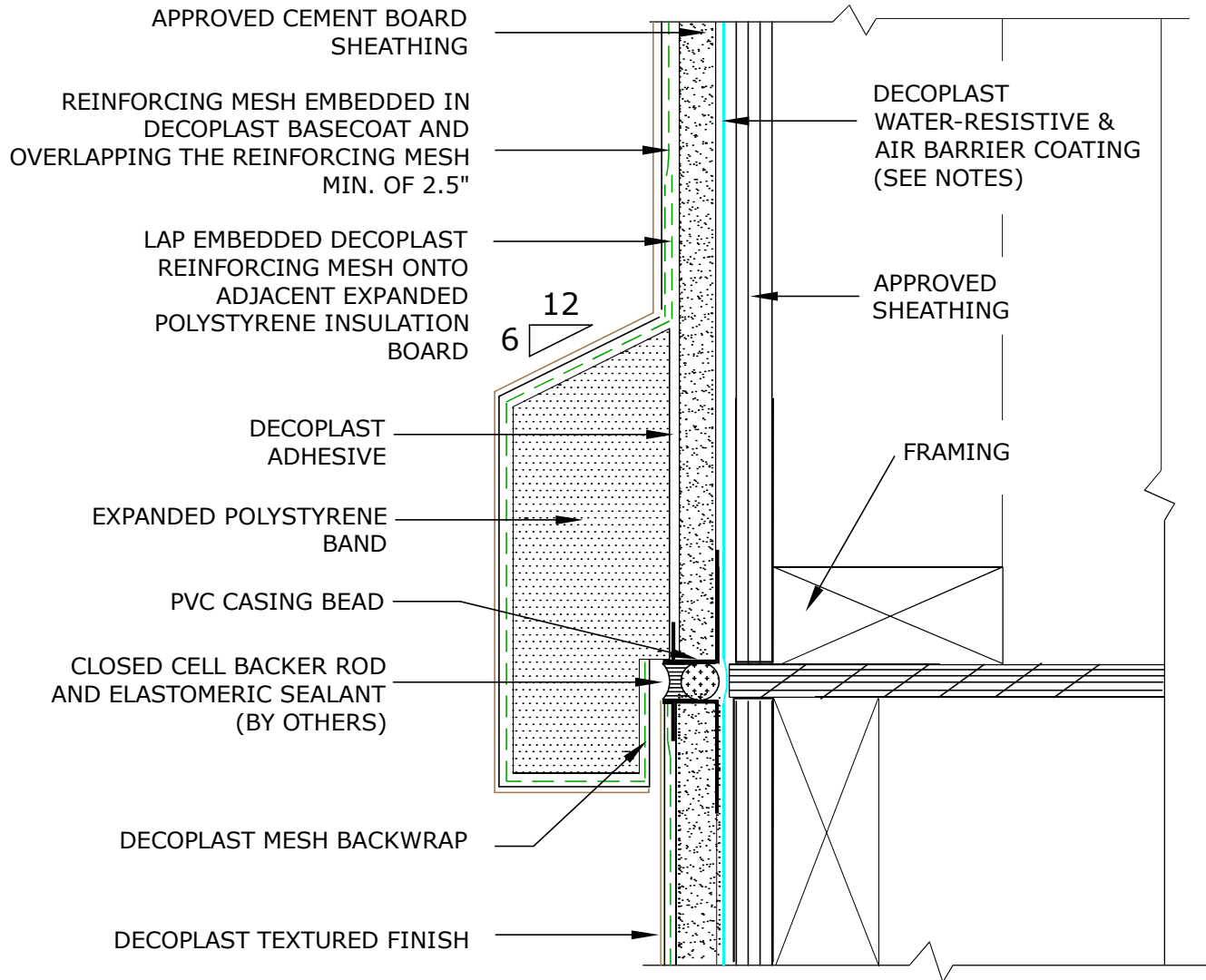
NOTE:

1. Details the same for either Steel or Wood Stud Framing
2. DECOPLAST Primer (Optional)
3. Depending on design requirements, WeatherTrek® (OR EQUAL) may be used.

Disclaimer: The design, specifications, and construction shall comply with all local building codes and standards. Decoplast installation guidelines are for general information and guidance only and Decoplast specifically disclaims any liability for the use of this design, and for design, engineering, or workmanship of any project. The assembly shall be designed to prevent condensation within the assembly. The designer and the user shall provide final drawings and specifications. Products shown other than those manufactured by Decoplast are shown for clarity of the Decoplast product only. Contact the manufacturer of such other products for installation instructions.



CEMENT BOARD STUCCO



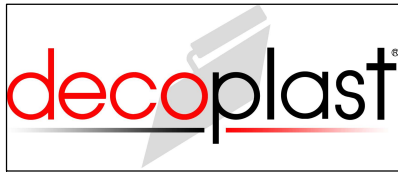
DCBS E1.04 CEMENT BOARD STUCCO FLOATING BAND AT WOOD FRAMED FLOOR LINE

DECOPLAST CEMENT BOARD STUCCO - 6/1/2016

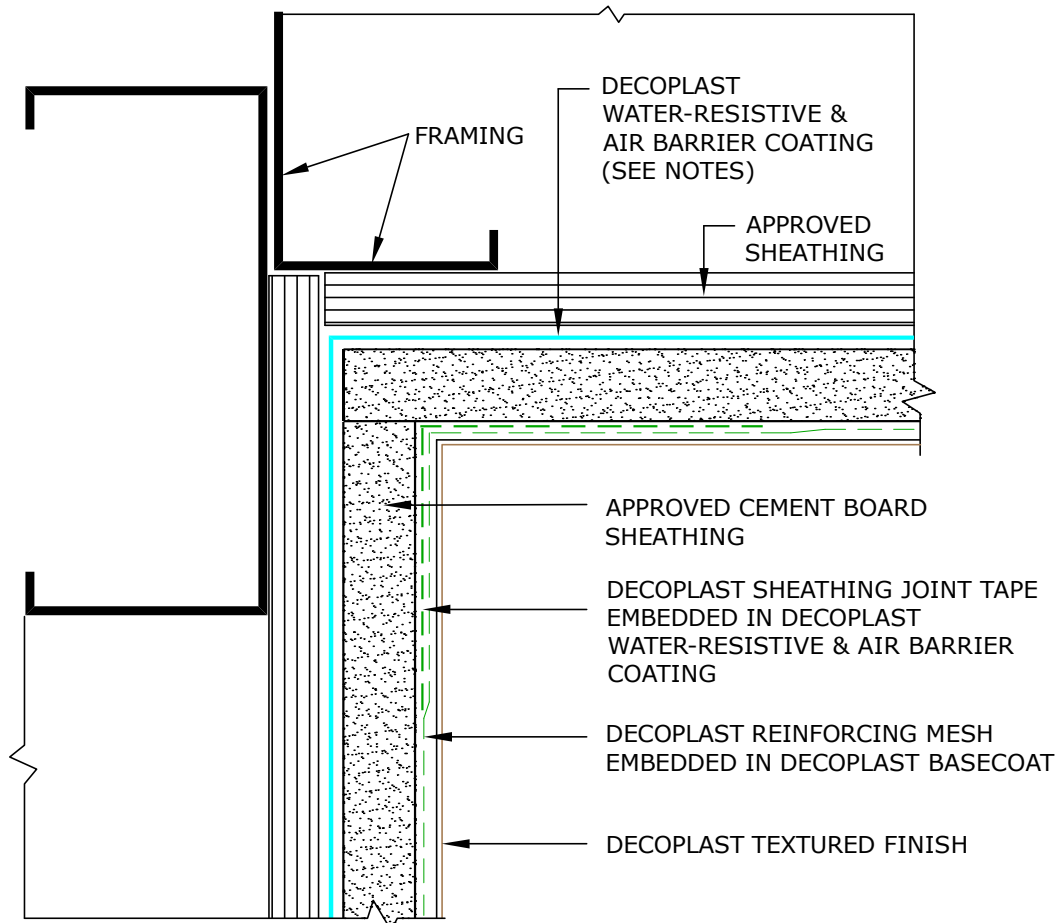
NOTE:

1. Details the same for either Steel or Wood Stud Framing
2. DECOPLAST Primer (Optional)
3. Depending on design requirements, WeatherTrek® (OR EQUAL) may be used.

Disclaimer: The design, specifications, and construction shall comply with all local building codes and standards. Decoplast installation guidelines are for general information and guidance only and Decoplast specifically disclaims any liability for the use of this design, and for design, engineering, or workmanship of any project. The assembly shall be designed to prevent condensation within the assembly. The designer and the user shall provide final drawings and specifications. Products shown other than those manufactured by Decoplast are shown for clarity of the Decoplast product only. Contact the manufacturer of such other products for installation instructions.



CEMENT BOARD STUCCO



DCBS G1.01 CEMENT BOARD STUCCO INSIDE CORNER

DECOPLAST CEMENT BOARD STUCCO - 6/1/2016

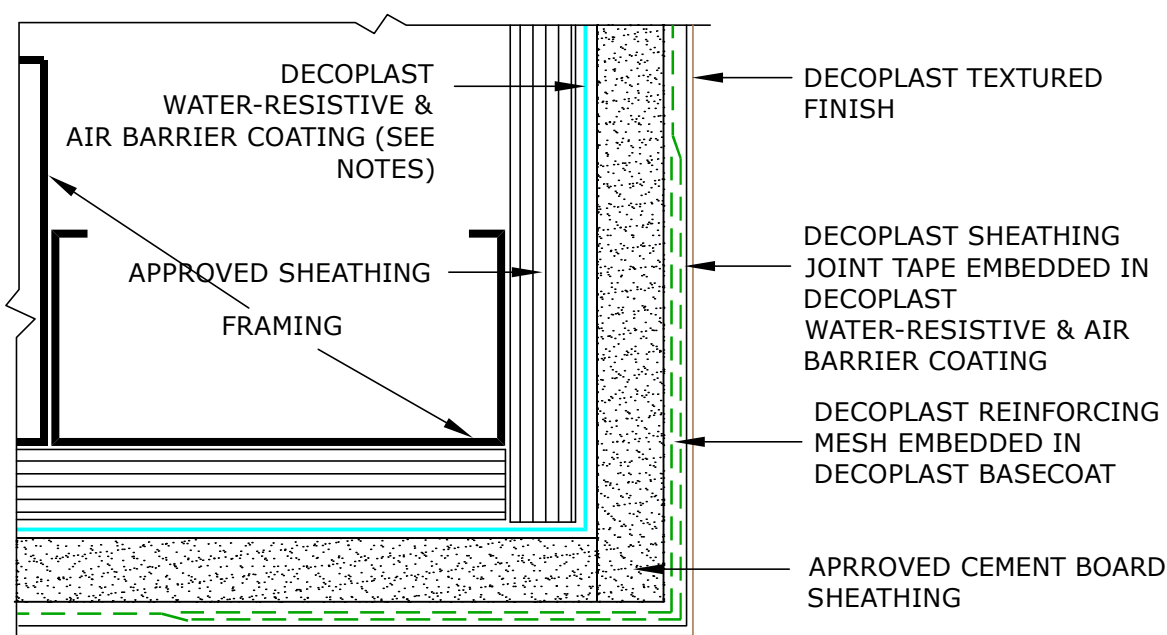
NOTE:

1. Details the same for either Steel or Wood Stud Framing
2. DECOPLAST Primer (Optional)
3. Depending on design requirements, WeatherTrek® (OR EQUAL) may be used.

Disclaimer: The design, specifications, and construction shall comply with all local building codes and standards. Decoplast installation guidelines are for general information and guidance only and Decoplast specifically disclaims any liability for the use of this design, and for design, engineering, or workmanship of any project. The assembly shall be designed to prevent condensation within the assembly. The designer and the user shall provide final drawings and specifications. Products shown other than those manufactured by Decoplast are shown for clarity of the Decoplast product only. Contact the manufacturer of such other products for installation instructions.



CEMENT BOARD STUCCO



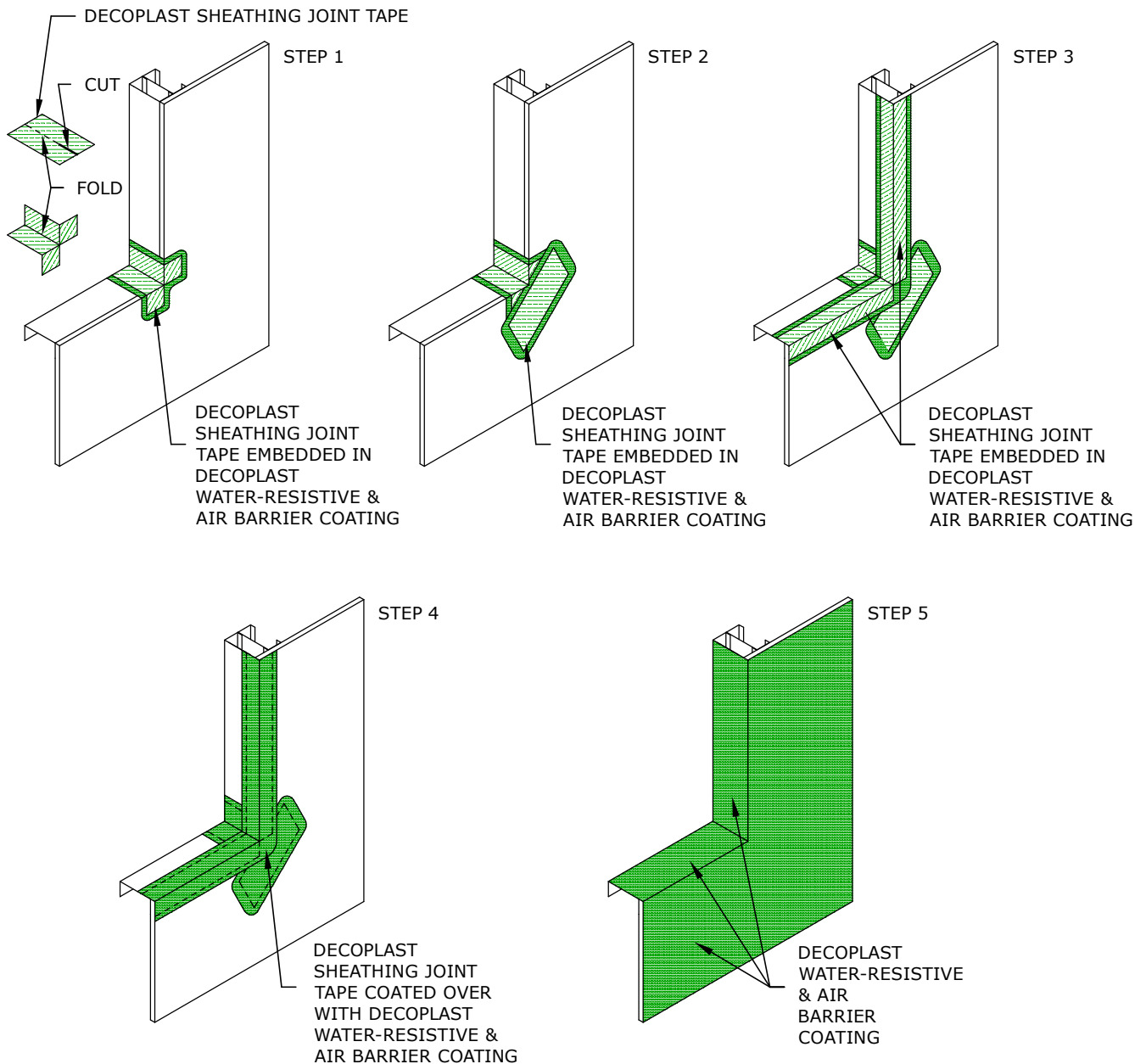
DCBS G1.02 CEMENT BOARD STUCCO OUTSIDE CORNER

DECOPLAST CEMENT BOARD STUCCO - 6/1/2016

NOTE:

1. Details the same for either Steel or Wood Stud Framing
2. DECOPLAST Primer (Optional)
3. Depending on design requirements, WeatherTrek® (OR EQUAL) may be used.

Disclaimer: The design, specifications, and construction shall comply with all local building codes and standards. Decoplast installation guidelines are for general information and guidance only and Decoplast specifically disclaims any liability for the use of this design, and for design, engineering, or workmanship of any project. The assembly shall be designed to prevent condensation within the assembly. The designer and the user shall provide final drawings and specifications. Products shown other than those manufactured by Decoplast are shown for clarity of the Decoplast product only. Contact the manufacturer of such other products for installation instructions.



DCBS G1.03A CEMENT BOARD STUCCO ROUGH OPENING FLASHING (SEE NOTES)

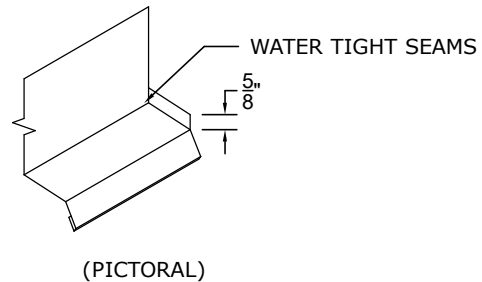
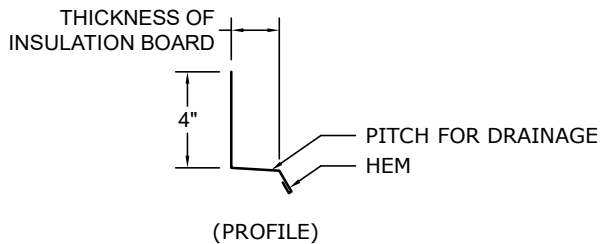
DECOPLAST CEMENT BOARD STUCCO - 6/1/2016

- NOTE:
1. Head flashing procedure similar.
 2. To ensure a continuous air barrier across the building envelope, a continuous air seal should be made at each substrate change, joints/gaps, penetrations and dissimilar material terminations. These must be a consideration of the designer in the overall wall assembly design.

Disclaimer: The design, specifications, and construction shall comply with all local building codes and standards. Decoplast installation guidelines are for general information and guidance only and Decoplast specifically disclaims any liability for the use of this design, and for design, engineering, or workmanship of any project. The assembly shall be designed to prevent condensation within the assembly. The designer and the user shall provide final drawings and specifications. Products shown other than those manufactured by Decoplast are shown for clarity of the Decoplast product only. Contact the manufacturer of such other products for installation instructions.

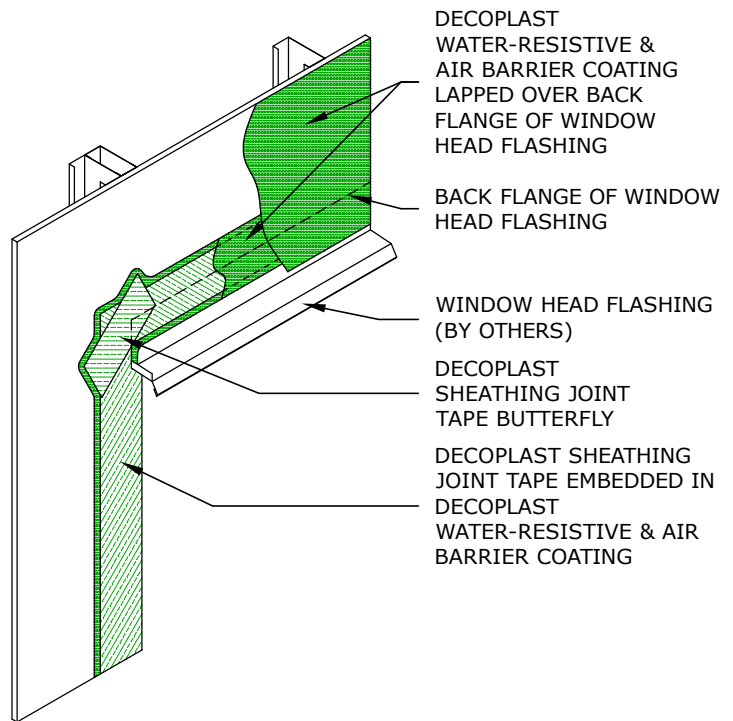
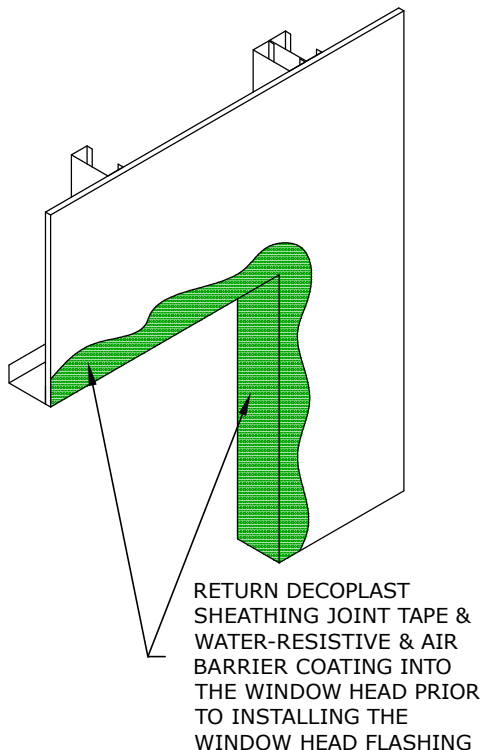


CEMENT BOARD STUCCO



METAL HEAD FLASHING PROFILE

HEAD FLASHING SHOULD BE FABRICATED IN THE PROFILE SHOWN. LENGTH OF FLASHING IS 1" LONGER THAN THE WIDTH OF THE WINDOW FRAME. END DAMS SHOULD BE TURNED UPWARD 5/8" AS SHOWN.

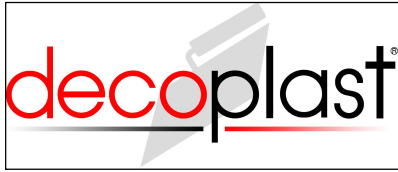


DSWM G1.03B CEMENT BOARD STUCCO ROUGH OPENING FLASHING PROCEDURE CONT.

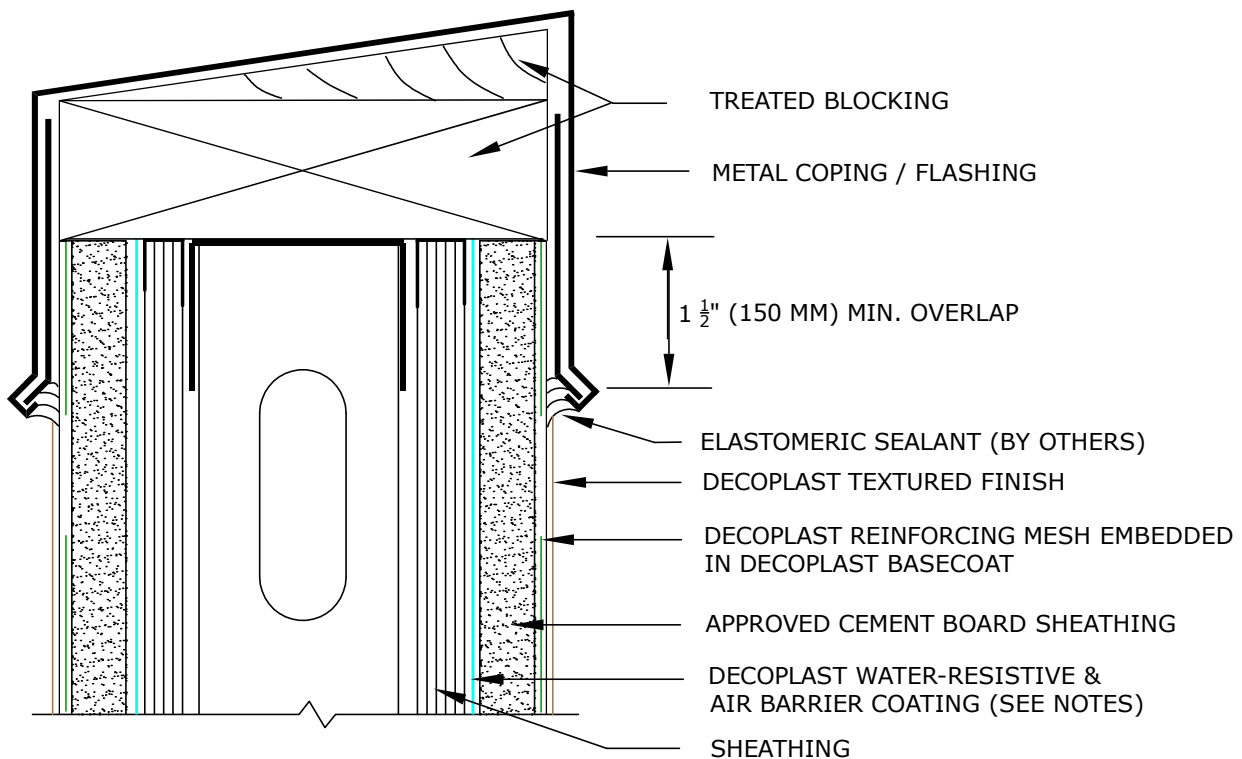
DECOPLAST CEMENT BOARD STUCCO - 6/1/2016

- NOTE:
1. To ensure a continuous air barrier across the building envelope, a continuous air seal should be made at each substrate change, joints/gaps, penetrations and dissimilar material terminations. These must be a consideration of the designer in the overall wall assembly design.
 2. Finned window frames are installed before head flashing.
 3. Do not use plastic track at window heads.

Disclaimer: The design, specifications, and construction shall comply with all local building codes and standards. Decoplast installation guidelines are for general information and guidance only and Decoplast specifically disclaims any liability for the use of this design, and for design, engineering, or workmanship of any project. The assembly shall be designed to prevent condensation within the assembly. The designer and the user shall provide final drawings and specifications. Products shown other than those manufactured by Decoplast are shown for clarity of the Decoplast product only. Contact the manufacturer of such other products for installation instructions.



CEMENT BOARD STUCCO



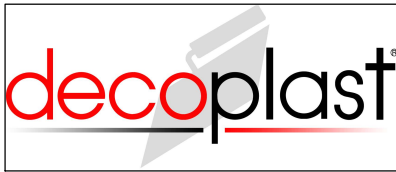
DCBS R1.01 CEMENT BOARD STUCCO - PARAPET WITH METAL FLASHING

DECOPLAST CEMENT BOARD STUCCO - 6/1/2016

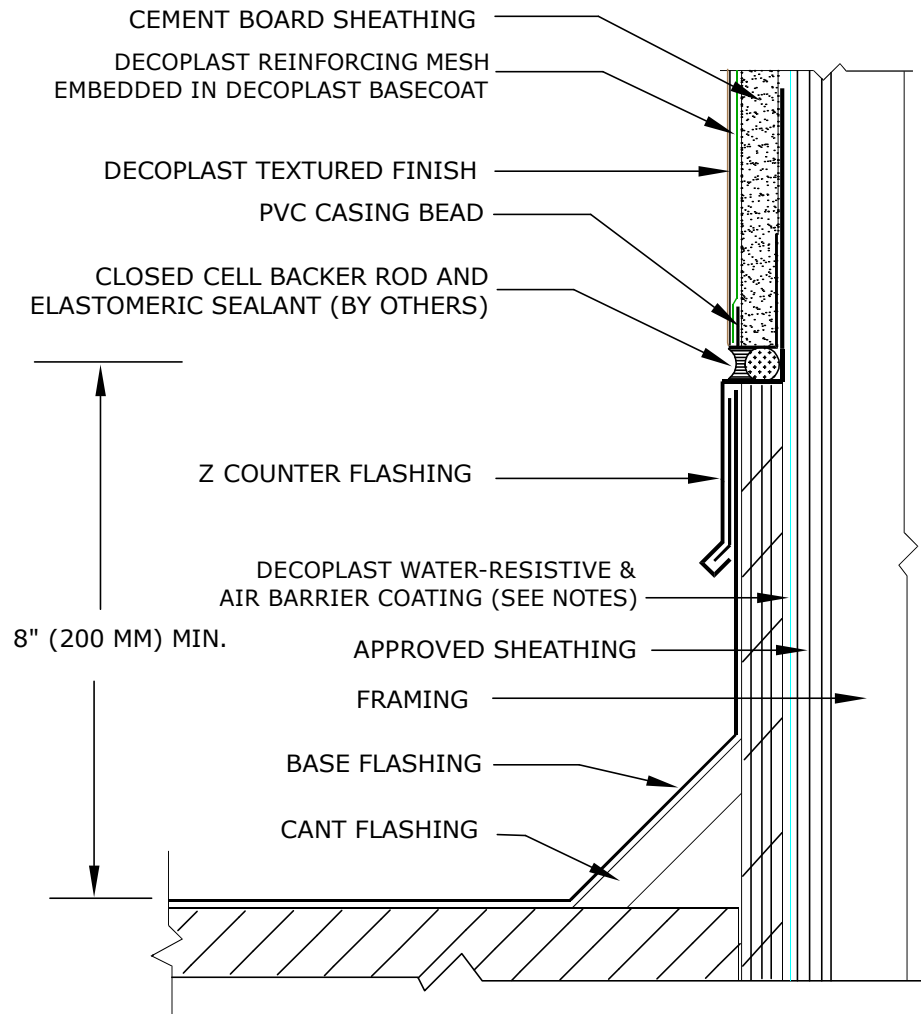
NOTE:

1. Details the same for either Steel or Wood Stud Framing
2. DECOPLAST Primer (Optional)
3. Depending on design requirements, WeatherTrek® (OR EQUAL) may be used.

Disclaimer: The design, specifications, and construction shall comply with all local building codes and standards. Decoplast installation guidelines are for general information and guidance only and Decoplast specifically disclaims any liability for the use of this design, and for design, engineering, or workmanship of any project. The assembly shall be designed to prevent condensation within the assembly. The designer and the user shall provide final drawings and specifications. Products shown other than those manufactured by Decoplast are shown for clarity of the Decoplast product only. Contact the manufacturer of such other products for installation instructions.



CEMENT BOARD STUCCO



DCBS R1.02 CEMENT BOARD STUCCO - HIGH WALL AT LOW ROOF

DECOPLAST CEMENT BOARD STUCCO - 6/1/2016

NOTE:

1. Details the same for either Steel or Wood Stud Framing
2. DECOPLAST Primer (Optional)
3. Depending on design requirements, WeatherTrek® (OR EQUAL) may be used.

Disclaimer: The design, specifications, and construction shall comply with all local building codes and standards. Decoplast installation guidelines are for general information and guidance only and Decoplast specifically disclaims any liability for the use of this design, and for design, engineering, or workmanship of any project. The assembly shall be designed to prevent condensation within the assembly. The designer and the user shall provide final drawings and specifications. Products shown other than those manufactured by Decoplast are shown for clarity of the Decoplast product only. Contact the manufacturer of such other products for installation instructions.



Decoplast Liquid Weather Resistive Barrier

Decoplast Liquid Weather Resistive Barrier—Smooth

TECHNICAL DATA

REPORT	TEST METHOD	TEST CRITERIA	TEST RESULTS
Tensile Bond	ASTM E2568-09e1 ASTM C297/297M-04(2010)	Min. 15 psi (103kPa)	Substrate Minimum 20psi; 139 kPa Liquid Weather Barrier Flashing Minimum 70psi; 485 kPa
Water Resistance	ASTM E2568-09e1 ASTM D2247-11	14 Day exposure	Pass
Water Vapor Transmission	ASTM E2570 ASTM D2247-11	Vapor Permeable	Pass
Air Leakage	ASTM E283		.02 L/Min./m ²
Water Penetration	ASTM E331	No water penetration beyond the inner most plane of the wall after 15 min @ 2.86psf	Pass
Air Permeance	ASTM E2178-11		<0.02 L/s/m ² @ 75Pa
Puncture Resistance	Lab Test	N/A	31.5 lbs
Racking	ASTM E72	No cracking; net deflection 1/8"	Pass
Transverse Load	ASTM E1233 AC-212	10 cycles	Pass
Tensile Bond	ASTM C297 ASTM E2134		Pass
Structural Performance	ASTM E1233 Proc A	10 cycles	Pass
Flame Propagation	NFPA-285		Pass; UL Certified
Radiant Heat Ignition	NFPA-268	No Flame Spread / Ignition	Pass
VOC (g/L)	This product complies with US EPA, South Coast AQMD and Greenseal Standard VOC emission standards for architectural coatings. VOC less than 3 g/L.		
% Solids (by volume)	Calculated		65%

Decoplast Liquid Weather Resistive Barrier is a one-component, fluid-applied vapor permeable air/water-resistive barrier. It is applied directly to vertical, above-grade approved wall substrates and provides an excellent waterproof air barrier when combined with Decoplast joint and rough opening treatment. Available with or without aggregate.

Coverages per pail:

Glass-Mat Gypsum Sheathing:

420-520 ft² (39-48.3 m²)

Exterior Gypsum:

420-520ft² (39-48.3m²)

Cement Board:

450-600 ft² (41.8-55.7 m²)

Poured Concrete:

450-600 ft² (41.8-55.7m²)

Plywood*:

135-175 ft² (12.5-16.3m²)

OSB*:

135-175ft² (12.5-16.3 m²)

CMU Standard Weight*:

225-275 ft² (20.5-25.5 m²)

*Coverage for C-1177 sheathing, cement board, poured concrete is at 10 mils WFT; for Plywood, OSB and CMU are at 20 mils WFT.

When used with Decoplast Sheathing Joint Tape to treat the sheathing joints and rough openings: (coverage may vary based on condition)

0'-4" Sheathing Fabric

625 ft (190.5m) / pail

0'-6" Sheathing Fabric

425 ft (129.5m) / pail

0'-9" Sheathing Fabric

285 ft (87m) / pail

Packaging

5 gallon (19L) 52.5 lbs / 23.8 kg per pail

Shelf Life

24 months, if properly stored and sealed.

Storage

Store Liquid Weather Resistive Barrier in a cool, dry place protected from freezing. Store at no less than 4°C (40°F). Protect from



Decoplast Liquid Weather Resistive Barrier

Decoplast Liquid Weather Resistive Barrier—Smooth

FEATURES	BENEFITS
Waterproof	Possible water damage minimized with repair and restoration costs associated
Vapor Permeable	Condensation risk in wall minimized from water vapor diffusion
Structural	No air leakage between sheathing and Decoplast WRB; rigid/stable under air pressure loads; does not tear or blow off the wall with wind
Resists UV Degradation / Added Durability	180 day exposure rating during construction.
Low VOC formulation	Safe, non-toxic; VOC compliant
Safe Installation	Low VOC, non-flammable as applied. Easy, fast installation; does not require specialized spray equipment or highly skilled labor

SURFACE PREPARATION

Substrate shall be dry, clean, sound and free of release agents, paint or other residue or coatings. Damaged sheathing must be removed and replaced.

Avoid application over irregular surfaces.

Substrate to be coated must be continuous without joints, holes, etc. exceeding 1/32" (0.8 mm) in size. Sheathing must be properly installed as required by applicable building codes or sheathing manufacturer.

MIXING

Mix with a clean, rust-free electric drill and paddle until thoroughly blended.

DILUTION OF DECOPLAST LIQUID WEATHER RESISTIVE BARRIER IS NOT RECOMMENDED



Decoplast Liquid Weather Resistive Barrier

Decoplast Liquid Weather Resistive Barrier—Smooth

APPLICATION

Clean, dry, properly prepared, frost-free surfaces are needed for application. Decoplast joint and rough opening treatment required for sheathing joints, inside and outside. Spot fasteners, knots or other voids in sheathing surface. Pre-spot all fasteners with Decoplast Liquid Weather Resistive Barrier if using Decoplast Sheathing Fabric including all other voids and spot surface defects such as overdriven fasteners, knots and voids.

Gypsum Sheathing, Glass-Mat Gypsum Sheathing, Exterior Plywood / Exterior: Apply Decoplast Liquid Weather Resistive Barrier to prepared substrate using spray equipment that can support a minimum 1 Gallon per minute (GPM) and a .031 mil tip at 3000+ psi., or with the appropriate size nap roller in a single, uniform coating at a wet thickness of 10 mils. Application over Glass-Mat Gypsum Sheathing, plywood and exterior gypsum sheathing: use a 1/2" (13 mm) nap roller.

Oriented Strand Board (OSB): A two-coat application of Decoplast Liquid Weather Resistive Barrier is required over OSB. The first coat is applied over the prepared substrate prior to treating sheathing joints, rough openings, and corners. Apply Decoplast Liquid Weather Resistive Barrier by spray or roller with a 1/2" (13mm) nap roller in a single, uniform coating at a wet thickness of 10 mils and allow drying. For air barrier, sheathing joints, rough openings, and corners must then be covered with Decoplast joint treatment. Substrate to receive the second coat of Decoplast Liquid Weather Resistive Barrier must be continuous without joints, holes, etc. exceeding 1/32" (0.8 mm) in size. The second coat of Decoplast Liquid Weather Resistive Barrier must be applied over the treated surface in a single, uniform coating to a wet thickness of 10 mils.

Concrete Masonry Wall Construction:

Concrete masonry wall construction must be structurally sound, clean, dry, and free from damage, frost, and all bond-inhibiting material, including dust, dirt, mold, algae, and efflorescence. Repair cracks up to 1/8 inch (3 mm) wide by filling. Rake the crack with a sharp tool to remove loose or friable material, and blow clean with oil-free compressed air. For cracks wider than 1/8" (3 mm) and up to 1/4" (6 mm) wide, use a paintable acrylic latex caulk to fill the crack, tool flush with the surface, and allow drying completely. For moving cracks consult a structural engineer. Protect crack repair materials from rain and freezing until dry.

Air and Moisture Barrier:

Spray-applied over CMU: Apply Decoplast Liquid Weather Resistive Barrier uniformly with suitable spray equipment. Backroll to fill the surface and allow drying. Apply a second uniform coat of Decoplast Liquid Weather Resistive Barrier and back-roll to achieve void / pinhole free surface. Depending on the condition of the surface, a minimum of 10 wet mils up to a maximum of 30 wet mils per coat is required. Apply additional coats if needed to achieve a VOID / PINHOLE FREE surface.

Roller-applied over CMU: Apply Decoplast Liquid Weather Resistive Barrier uniformly with a 3/4 inch (19 mm) nap roller and allow drying. Apply a second uniform coat of Decoplast Liquid Weather Resistive Barrier to achieve a void and pinhole free surface. Depending on the condition of the surface a minimum of 10 wet mils up to a maximum of 30 wet mils per coat is required. Apply additional coats if needed to achieve a VOID AND PINHOLE FREE surface.

IMPORTANT NOTE: Decoplast Liquid Weather Resistive Barrier functions as a waterproof air barrier on normal weight concrete masonry unit wall construction with flush (struck flush with the surface of the CMU) or concave joints when a minimum of two liberal coats are applied. Additional coats may be necessary depending on the condition of the CMU wall surface, CMU porosity, joint profile, and other variables that may exist. For "rough" CMU wall surfaces, skim coat the entire surface with Decoplast cementitious leveler before application of Decoplast Liquid Weather Resistive Barrier. A VOID AND PINHOLE FREE SURFACE must be achieved for Decoplast Liquid Weather Resistive Barrier to properly function as a waterproof air barrier on CMU wall surfaces.

Curing/Drying

Decoplast Liquid Weather Resistive Barrier is dry to touch and can be over coated within 2-4 hours under normal conditions [70°F (21°C), 50% RH]. Wait 24 hours before adhesive attachment of Decoplast insulation board. Final drying varies depending on temperature / humidity and surface conditions. Protect from rain and freezing until completely dry.

Material Storage

Keep containers covered to protect from skinning. If skin forms, remove the skinned material from container; remaining material is unaffected by skinned material.

Clean Up

Clean tools and equipment with water immediately after use. Dried material can only be removed mechanically.

Decoplast Liquid Weather Resistive Barrier

Decoplast Liquid Weather Resistive Barrier—Smooth



LIMITATIONS

- Apply only when the surface and ambient temperatures are above 40°F (4°C) and below 100°F (38°C) during application and drying period.
- Not recommended for use when cool, damp conditions exist for prolonged periods. Cool, damp conditions retard drying and may require extended periods of protection.
- Do not use on damp surfaces, below grade, or on surfaces subject to water immersion.
- Not recommended for use over fire-retardant treated or pressure treated plywood substrates.
- Not recommended for spanning sheathing joints or holes in excess of 1/8" (3 mm) wide.
- Contact Decoplast Technical Service for additional information regarding coverage over different brands.
- Ventilate temporary heaters to the exterior to prevent water vapor from accumulating on or within the wall assembly materials.
- Decoplast Liquid Weather Resistive Barrier can be left exposed to weather for up to 6 months of installation to protect the substrate.
- When Decoplast Liquid Weather Resistive Barrier is used in conjunction with Decoplast Continuous Insulation Systems ensure the Decoplast Liquid Weather Resistive Barrier surface is clean, dry, and free of surface contamination. Install Decoplast Continuous Insulation System Board within 30 days of the application of Decoplast Liquid Weather Resistive Barrier, or clean the surface and recoat with Decoplast Liquid Weather Resistive Barrier.
- For Portland cement stucco and similarly constructed wall assemblies over metal lath contact Decoplast Technical Service.

HEALTH AND SAFETY

Health Precaution

As with any chemical construction product, exercise care when handling. Product is water-based.

WARNING!

Causes eye and skin irritation.

Precaution Measures:

Wash hands thoroughly after handling. Wear protective gloves/protective clothing/eye protection/face protection.

First Aid:

Eye Contact: Immediately flush eyes with plenty of water for at least 15 to 20 minutes. Ensure adequate flushing of the eyes by separating the eyelids with fingers. Get immediate medical attention.

Skin Contact: Immediately wash skin with plenty of soap and water for 15 to 20 minutes, while removing contaminated clothing and shoes. Get medical attention if irritation develops or persists.

Inhalation: If inhaled, remove to fresh air. If not breathing, give artificial respiration or give oxygen by trained personnel. Seek immediate medical attention.

Ingestion: If swallowed, do NOT induce vomiting. Call a physician or poison control center immediately. Never give anything by mouth to an unconscious person.

Spills

Contain and collect with a suitable absorbent material such as cotton rags.

Disposal

Dispose of in accordance with local, state or federal regulations.

Warning

KEEP CONTAINER CLOSED WHEN NOT IN USE. KEEP OUT OF THE REACH OF CHILDREN. NOT FOR INTERNAL CONSUMPTION. FOR INDUSTRIAL USE ONLY. Consult the Safety Data Sheet (SDS) for further health and safety information.

LIMITED WARRANTY

This product is subject to a written limited warranty. Refer to Decoplast Specifications for more complete information on proper use and handling of this product.



697 Oakwood Avenue, West Hartford, CT 06110
voice: 860.761.2830 fax: 860.761.2831
www.decoplast.com

This product is intended for use by qualified professional contractors. All information conforms to the standard detail recommendations and specifications for the installation of Decoplast systems and is presented in good faith as of the date of publication of this document. GREENMAKER INDUSTRIES ASSUMES NO LIABILITY, EXPRESSED OR IMPLIED, AS TO THE WORKMANSHIP, ENGINEERING OR ARCHITECTURE OF ANY PROJECT. For more information regarding this product or additional Decoplast products, please contact a Decoplast Representative at (860) 761-2830 or visit our website www.Decoplast.com.

Decoplast Sheathing Fabric



TECHNICAL CHARACTERISTICS

MD Yarn	500 Denier H.T. Polyester
CD Yarn	500 Denier H.T. Polyester
Pattern	5 x 5 yarns/inch
Tensile	50 x 45 yarns/inch
Weight	2.13 oz/yd ²
Coating	F.R. PVC
Substrate	1 layer of 0.5 oz/yd ² Spunbond Polyester

Decoplast Sheathing Fabric is a cost-effective reinforcing fabric made by chemically bonding continuous filament yarn in an open mesh construction. It is commonly used to increase tear or puncture resistance, improve dimensional stability, or aid in processing. The utility of Decoplast Sheathing Fabric can be further enhanced by the use of functional binders for increased chemical, tear or moisture resistance, for proper chemical compatibility with the construction they are reinforcing, or for providing the adhesive properties needed for laminations.

PROPERTIES

Excellent Dimensional Stability

Tensile Strength

Increased Tear Resistance

Storage

Store off the ground in a dry area with adequate ventilation. Protect from extreme heat 130°F, moisture and direct sunlight.

HEALTH AND SAFETY

Health Precaution

As with any chemical construction product, exercise care when handling.

Safety Precaution

Wash hands thoroughly after handling. Wear protective gloves/protective clothing/eye protection/face protection.

First Aid:

EYE CONTACT: Immediately flush eyes with plenty of water for at least 15 to 20 minutes. Contact a physician.

SKIN CONTACT: Immediately wash skin with plenty of soap and water for 15 to 20 minutes, while removing contaminated clothing and shoes. Get medical attention if irritation develops or persists. **Inhalation:** Move to fresh air. If symptoms persist, call a physician.

INGESTION: Accidental ingestion of this material is unlikely. If this does occur, watch person for several days to make sure intestinal blockage does not occur. Rinse mouth with water and drink water to remove fibers from the throat. If symptoms persist, call a physician.

Disposal

Dispose of in accordance with local, state or federal regulations.

Warning

KEEP CONTAINER CLOSED WHEN NOT IN USE. KEEP OUT OF THE REACH OF CHILDREN. NOT FOR INTERNAL CONSUMPTION. FOR INDUSTRIAL USE ONLY. Consult the Safety Data Sheet (SDS) for further health and safety information.

LIMITED WARRANTY

This product is subject to a written limited warranty. Refer to Decoplast Specifications for more complete information on proper use and handling of this product.



697 Oakwood Avenue, West Hartford, CT 06110
voice: 860.761.2830 fax: 860.761.2831
www.decoplast.com

This product is intended for use by qualified professional contractors. All information conforms to the standard detail recommendations and specifications for the installation of Decoplast systems and is presented in good faith as of the date of publication of this document. GREENMAKER INDUSTRIES ASSUMES NO LIABILITY, EXPRESSED OR IMPLIED, AS TO THE WORKMANSHIP, ENGINEERING OR ARCHITECTURE OF ANY PROJECT. For more information regarding this product or additional Decoplast products, please contact a Decoplast Representative at (860) 761-2830 or visit our website www.Decoplast.com.

Decoplast Dry Base Coat / Adhesive Premium



TECHNICAL DATA

REPORT	TEST METHOD	TEST CRITERIA	TEST RESULTS
Surface Burning	ASTM E-84	< 25 Flame Spread < 450 Smoke Developed	Pass Pass
Adhesion (psi)	ASTM C-297	28 days	> 20 Gypsum Sheathing > 15 EPS Board > 80 Concrete Block > 35 Dens-Glass® Gold

Decoplast Dry Base Coat / Adhesive Premium is a one component, polymer-modified, cement based, dry powder material used as an adhesive and base coat used in the Decoplast Continuous Insulation Systems.

Coverage

75 – 100 ft² (6.9-9.29 m²) per bag, used for both adhesive and base coat applications.

Adhesive over sheathing and smooth masonry:

200-240 ft² (18.6-22.3 m²) per bag, application with U-notched trowel having 1-1/2" (38 mm) spread between notches; 3/8" x 1/2" notch.

Adhesive over rough or uneven masonry:

95-115 ft² (8.8-11.1 m²) per bag, application with U-notched trowel having 1-1/2" (38 mm) spread between notches; 3/8" x 1/2" x 1/2" notch.

Skim coat:

90-135 ft² (8.4-12.5 m²) per bag

Coverages may vary depending on application technique and surface conditions.

Packaging

50 lb. bag (23 kg).

Shelf Life

24 months, if unopened, properly stored and protected from moisture.

Storage

Store off the ground in a dry area. Protect from extreme heat [90°F (32°C)], moisture and direct sunlight.

FEATURES

BENEFITS

One-component	Ready to use; easily mixed with water on the job site
Polymer-modified	Excellent adhesion; increases durability and freeze/thaw resistance
Smooth consistency	Trowels on easily; increases productivity
Vapor permeable	Allows substrate to breathe naturally; resists blistering due to vapor
Factory blended Portland Cement	Assures performance mix ratio
Low cement ratio	Less alkalinity, less free lime, less efflorescence
Bagged powder product	Less solid waste

SURFACE PREPARATION

Adhesive Preparation:

Ensure surface is clean, dry and free of surface contamination. Install insulation board with adhesive within 30 days of the application of **Decoplast Weather-Resistive Barrier** or clean the surface and recoat with **Decoplast Weather-Resistive Barrier**.

Concrete / Masonry

Surfaces must be clean, dry and free of frost, damage and all bond inhibiting materials, including dirt, efflorescence, laitance, form oil and other foreign matter. Loose or damaged material must be removed by water blasting, sandblasting or mechanical wire brushing and repaired. Avoid application over irregular surfaces. Resurface, patch or level surfaces to required tolerance and smoothness with appropriate Decoplast leveling materials.

ASTM C 1177— Glass Mat Gypsum Sheathing

Ensure surface is clean, dry and free of surface contamination. Sheathing must be installed and protected in accordance with manufacturer's and building code requirements. Remove and replace weather damaged sheathing. Avoid application over irregular, out of plane surfaces. Install insulation board with adhesive within 30 days of installation of the sheathing.

Base Coat Preparation:

Insulation board must be rasped and free of all bond inhibiting materials.

Concrete or Masonry

Surfaces must be clean, dry and free of frost, damage and all bond inhibiting materials, including dirt, efflorescence, laitance, form oil and other foreign matter. Loose or damaged material must be removed by water blasting, sandblasting or mechanical wire brushing and repaired.

Decoplast Dry Base Coat / Adhesive Premium



MIXING

Use 5-6.5 quarts (4.7-6.2 L) of clean, potable water per 50 lb. (23 kg) bag of Decoplast Dry Base Coat. Mix with a clean, rust-free electric drill and paddle. Allow to set approximately five minutes, adjust mix if necessary by adding up to 12 fl.oz. (0.35 L) of water per bag, remix to a uniform consistency. Avoid re-tempering after mixing of product. Do not exceed maximum amount of water in mix ratio.

APPLICATION

Apply only to sound and clean, dry, properly prepared, frost-free surfaces.

As an Adhesive:

Apply to the back of the insulation board with the appropriate size notched trowel. Form uniform ribbons of adhesive parallel to the short dimension of the board so the ribbons are oriented vertically in relation to the plane of the wall. Immediately install the board horizontally with staggered joints and apply firm uniform pressure over the entire board surface. Do not delay installation once adhesive is applied.

As a Base Coat:

Apply with a stainless steel trowel to an approximate thickness of 1/8" (3 mm). Work horizontally or vertically in strips of 40" (1 m) and immediately embed Decoplast Reinforcing Mesh in wet base coat by troweling from the center to the edges of the mesh. Avoid wrinkles in the mesh and smooth the base coat to eliminate trowel marks. Minimum recommended dry thickness of the reinforced base coat is 1/16" (1.6 mm) when dry. Reapply additional base coat if necessary to achieve minimum thickness as soon as the first application is dry. Embedded mesh in base coat should not be visible.

As a Skim Coat:

Apply in one application to a maximum thickness of 1/16" (1.6 mm) to the prepared surface and smooth the surface.

Curing/Drying

Dries within 24 hours under normal drying conditions [70°F (21°C), 50% RH]. Allow additional drying time during cold, humid, or wet weather until insulation board is fully adhered before rasping, and before application of primer or finish to hardened Decoplast Dry Base Coat. Protect from rain, freezing and continuous high humidity until completely dry. Decoplast recommends using Decoplast Primer prior to application of finish.

Clean Up

Clean tools and equipment with water immediately after use. Dried material can only be removed mechanically.

LIMITATIONS

Use Decoplast Dry Base Coat only when surface and ambient temperatures are above 40°F (4°C) during application and drying period.

Sloped surfaces: Refer to Decoplast details.

Decoplast Dry Base Coat should not be used on weather-exposed horizontal or below grade surfaces or where immersion in water may occur.

Prevent rapid loss of moisture from exposure to direct sun, wind and high temperatures.

Decoplast Dry Base Coat should not be used as a finish coating.

HEALTH AND SAFETY

Health Precaution

Contains Portland cement and crystalline-free silica. Avoid breathing dust. As with any chemical construction product, exercise care when handling.

DANGER!

Causes serious eye damage and/or skin irritation. May cause an allergic skin reaction, respiratory irritation, drowsiness or dizziness.

Safety Precaution

Wash hands thoroughly after handling. Wear protective gloves/protective clothing/eye protection/face protection.

First Aid:

EYE CONTACT: Immediately flush eyes with plenty of water for at least 15 to 20 minutes. Ensure adequate flushing of the eyes by separating the eye lids with fingers. Get immediate medical attention.

SKIN CONTACT: Immediately wash skin with plenty of soap and water for at least 15 to 20 minutes, while removing contaminated clothing and shoes. Get medical attention if irritation develops or persists.

INHALATION: If inhaled, remove to fresh air. If not breathing give artificial respiration or give oxygen by trained personnel. Seek medical attention immediately.

INGESTION: If swallowed, do NOT induce vomiting. Call a physician or a poison control center immediately. Never give anything by mouth to an unconscious person.

Spills

Contain and collect in an appropriate container. Uncured material may be removed with water.

Disposal

Dispose of in accordance with local, state or federal regulations.

Warning

KEEP CONTAINER CLOSED WHEN NOT IN USE. KEEP OUT OF THE REACH OF CHILDREN. NOT FOR INTERNAL CONSUMPTION. FOR INDUSTRIAL USE ONLY. Consult the Safety Data Sheet (SDS) for further health and safety information.

LIMITED WARRANTY

This product is subject to a written limited warranty. Refer to Decoplast Specifications for more complete information on proper use and handling of this product.



697 Oakwood Avenue, West Hartford, CT 06110
voice: 860.761.2830 fax: 860.761.2831
www.decoplast.com

This product is intended for use by qualified professional contractors. All information conforms to the standard detail recommendations and specifications for the installation of Decoplast systems and is presented in good faith as of the date of publication of this document. GREENMAKER INDUSTRIES ASSUMES NO LIABILITY, EXPRESSED OR IMPLIED, AS TO THE WORKMANSHIP, ENGINEERING OR ARCHITECTURE OF ANY PROJECT. For more information regarding this product or additional Decoplast products, please contact a Decoplast Representative at (860) 761-2830 or visit our website www.Decoplast.com.

Decoplast Liquid Base Coat / Adhesive



TECHNICAL DATA

REPORT	TEST METHOD	TEST CRITERIA	TEST RESULTS
Surface Burning	ASTM E-84	< 25 Flame Spread	Pass
		< 450 Smoke Developed	Pass
Adhesion (psi)	ASTM C-297	28 days	> 20 Gypsum Sheathing
			> 15 EPS Board
			> 60 Concrete Block
			> 25 Dens-Glass® Gold
NFPA—285			UL Classified

FEATURES

BENEFITS

Polymer-modified	Excellent adhesion; increases durability and freeze/thaw resistance
Smooth consistency	Trowels on easily; increases productivity
Vapor Permeable	Use as an adhesive, base coat and leveling coat

SURFACE PREPARATION

Adhesive Preparation:

Decoplast Liquid Weather Resistive Barrier: ensure surface is clean, dry and free of surface contamination. Install insulation board with adhesive within 30 days of the application of Decoplast Liquid Weather Resistive Barrier, or clean the surface and recoat with Decoplast Liquid Weather Resistive Barrier.

Concrete or Masonry

Surfaces must be clean, dry and free of frost, damage and all bond inhibiting materials, including dirt, efflorescence, laitance, form oil and other foreign matter. Loose or damaged material must be removed by water blasting, sandblasting or mechanical wire brushing and repaired. Avoid application over irregular surfaces. Resurface, patch or level surfaces to required tolerance and smoothness with appropriate Decoplast leveling materials.

Glass Mat Gypsum Sheathing in Compliance with ASTM C 1177

Ensure surface is clean, dry and free of surface contamination. Sheathing must be installed and protected in accordance with manufacturer's and building code requirements. Remove and replace weather damaged sheathing. Avoid application over irregular, out of plane surfaces. Install insulation board with adhesive within 30 days of installation of the sheathing.

As a Base Coat**Insulation Board**

Insulation must be rasped and free of all bond inhibiting materials.

Concrete or Masonry

Surfaces must be clean, dry and free of frost, damage and all bond-inhibiting materials, including dirt, efflorescence, laitance, form oil and other foreign matter. Loose or damaged material must be removed by water blasting, sandblasting or mechanical wire brushing and repaired.

Decoplast Liquid Base Coat / Adhesive is a 100% acrylic polymer used as an adhesive and base coat combined with Portland Cement. Liquid Base Coat / Adhesive is used in the Decoplast Continuous Insulation Systems. It is a two component product.

Coverage

100-125 ft² (9.3-11.6 m²) per pail, when used for both adhesive and base coat applications.

Adhesive over sheathing and smooth masonry:
200-250 ft² (18.6-23.2 m²) per pail, application with U-notched trowel having 1-1/2" (38.1mm) spread between notches; 3/8" x 1/2" notch.

As an adhesive over rough or uneven masonry:
Coverage will vary based on surface condition of masonry.

As a base coat:

165-250 ft² (15.3-23.2m²) per pail.

As a skim coat:

185-250 ft² (17.2-23.2m²) per pail.

Coverages may vary depending on application technique and surface conditions.

Packaging

5 gal. (19L) pail 62.5 lbs / 28.4 kg per pail

Shelf Life

24 months, if unopened, properly stored and protected from moisture.

Storage

Store off the ground in a dry area. Protect from extreme heat [90°F (32°C)], moisture and direct sunlight.

Decoplast Liquid Base Coat / Adhesive



MIXING

Mix equal parts of Decoplast Liquid Base Coat / Adhesive to Type I/ II Portland cement by weight. Mix with a clean, rust-free electric drill and paddle. Allow to set approximately five minutes, adjust mix if necessary by adding up to 8 fl. oz. (0.24 L) of water, and remix to a uniform consistency. Avoid retempering after mixing of product.

APPLICATION

Apply only to sound and clean, dry, properly prepared, frost-free surfaces.

As an Adhesive:

Apply to the back of the insulation board with the appropriate size notched trowel. Form uniform ribbons of adhesive parallel to the short dimension of the board so the ribbons are oriented vertically in relation to the plane of the wall. Immediately install the board horizontally with staggered joints and apply firm uniform pressure over the entire board surface. Do not delay installation once adhesive is applied.

As a Base Coat:

Apply with a stainless steel trowel to an approximate thickness of 1/8" (3 mm). Work horizontally or vertically in strips of 40" (1 m) and immediately embed Decoplast Reinforcing Mesh in wet base coat by troweling from the center to the edges of the mesh. Avoid wrinkles in the mesh and smooth the base coat to eliminate trowel marks. Minimum recommended dry thickness of the reinforced base coat is 1/16" (1.6 mm) when dry. Reapply additional base coat if necessary to achieve minimum thickness as soon as the first application is dry. Embedded mesh in base coat should not be visible.

As a Skim Coat:

Apply with a stainless steel trowel to a maximum thickness of 1/16" to the prepared surface.

Curing/Drying

Dries within 24 hours under normal drying conditions [70°F (21°C), 50% RH]. Allow additional drying time during cold, humid, or wet weather until insulation board is fully adhered before rasping, and before application of primer or finish to hardened Decoplast Liquid Base Coat. Protect from rain, freezing and continuous high humidity until completely dry. Decoplast recommends using Decoplast Primer prior to application of finish.

Clean Up

Clean tools and equipment with water immediately after use. Dried material can only be removed mechanically.

LIMITATIONS

Use Decoplast Liquid Base Coat only when surface and ambient temperatures are above 40°F (4°C) during application and drying period.

Sloped surfaces: Refer to Decoplast details.

Decoplast Liquid Base Coat should not be used on weather-exposed horizontal or below grade surfaces or where immersion in water may occur.

Prevent rapid loss of moisture from exposure to direct sun, wind and high temperatures.

Decoplast Liquid Base Coat should not be used as a finish coating.

HEALTH AND SAFETY

Health Precaution

Decoplast Liquid Base Coat is water-based. As with any chemical construction product, exercise care when handling.

WARNING!

Causes eye and skin irritation.

Safety Precaution

Wash hands thoroughly after handling. Wear protective gloves/protective clothing/eye protection/face protection.

First Aid:

EYE CONTACT: Immediately flush eyes with plenty of water for at least 15 to 20 minutes. Ensure adequate flushing of the eyes by separating the eye lids with fingers. Get immediate medical attention.

SKIN CONTACT: Immediately wash skin with plenty of soap and water for at least 15 to 20 minutes, while removing contaminated clothing and shoes. Get medical attention if irritation develops or persists.

INHALATION: If inhaled, remove to fresh air. If not breathing give artificial respiration or give oxygen by trained personnel. Seek medical attention immediately.

INGESTION: If swallowed, do NOT induce vomiting. Call a physician or a poison control center immediately. Never give anything by mouth to an unconscious person.

Spills

Contain and collect in an appropriate container. Uncured material may be removed with water.

Disposal

Dispose of in accordance with local, state or federal regulations.

Warning

KEEP CONTAINER CLOSED WHEN NOT IN USE. KEEP OUT OF THE REACH OF CHILDREN. NOT FOR INTERNAL CONSUMPTION. FOR INDUSTRIAL USE ONLY. Consult the Safety Data Sheet (SDS) for further health and safety information.

LIMITED WARRANTY

This product is subject to a written limited warranty. Refer to Decoplast Specifications for more complete information on proper use and handling of this product.



697 Oakwood Avenue, West Hartford, CT 06110
voice: 860.761.2830 fax: 860.761.2831
www.decoplast.com

This product is intended for use by qualified professional contractors. All information conforms to the standard detail recommendations and specifications for the installation of Decoplast systems and is presented in good faith as of the date of publication of this document. GREENMAKER INDUSTRIES ASSUMES NO LIABILITY, EXPRESSED OR IMPLIED, AS TO THE WORKMANSHIP, ENGINEERING OR ARCHITECTURE OF ANY PROJECT. For more information regarding this product or additional Decoplast products, please contact a Decoplast Representative at (860) 761-2830 or visit our website www.Decoplast.com.



Decoplast Fiberglass Reinforcing Mesh

Detail Mesh (4.5 oz) / Standard Mesh (4.5 oz)

High Standard Mesh (6.0 oz) / Intermediate Mesh (10.0 oz)

Decoplast Armor 15 Mesh (14.0 oz) / Decoplast Armor 20 Mesh (20.0 oz)

Decoplast Corner Mesh (6.0 oz)

Decoplast Reinforcing Meshes are specially designed coated glass fiber fabrics used as base coat reinforcement and for impact resistance wall applications.

TECHNICAL DATA

REPORT	TEST METHOD	TEST CRITERIA	TEST RESULTS	
Tensile Strength	ASTM D-5035	Product	WARP (PLI)	WEFT (PLI)
		Detail Mesh	150	160
		Standard Mesh	150	160
		High Standard Mesh	140	225
		Intermediate Mesh	300	460
		Armor 15	350	540
		Armor 20	875	500
		Corner Mesh	140	225

Product	Nominal Weight (YD ² . +/- 5 %)	Width of Roll	Length of Roll
Detail Mesh	4.5 oz	9.5" (0.24 m)	150' (45.7 m)
Standard Mesh	4.5 oz	38" (0.97 m)	150' (45.7 m)
High Standard	6.0 oz	38" (0.97 m)	150' (45.7 m)
Intermediate	10.0 oz	38" (0.97 m)	75' (22.9 m)
Armor 15	14.0 oz	38" (0.97 m)	75' (22.9 m)
Armor 20	20.0 oz	39" (0.97 m)	75' (22.9 m)
Corner Mesh	6.0 oz	9.5" (0.24 m)	150' (45.7 m)

Coverage Per Roll

Decoplast Detail Mesh: 118 ft² (11 m²)

Standard Mesh: 475 ft² (44.1 m²)

High Standard: 475 ft² (44.1 m²)

Intermediate Mesh: 237 ft² (22.1 m²)

Armor 15: 237 ft² (22.1 m²)

Armor 20: 237 ft² (22.1 m²)

Decoplast Corner Mesh: 118 ft² (11 m²)

Packaging Per Carton

Decoplast Detail Mesh: 16 Rolls / Box

Standard Mesh: 4 Rolls / Box

High Standard: 4 Rolls / Box

Intermediate Mesh: 4 Rolls / Box

Armor 15: 2 Rolls / Box

Armor 20: 1 Rolls / Box

Decoplast Corner Mesh: 4 Rolls / Box

FEATURES

BENEFITS

Flexible

Easily wrapped at corners; provides crack resistance

Trimmed Edges

Minimizes building on overlapped seams

Coated Glass Fiber

Durable, long-lasting; provides impact resistance

Variety of Weights

Meets a variety of requirements

USE

Decoplast Intermediate Mesh: for use as a reinforcing fabric in wall claddings. Achieves high-impact resistance.

Decoplast Detail Mesh: lightweight, highly flexible reinforcing fabric specially designed for use to facilitate back-wrapping system terminations, into reveals and for intricate architectural details in wall claddings, and to bridge sheathing joints and wrap rough openings applications.

Decoplast Mesh / High Standard: for use as standard reinforcing fabric in wall claddings, and in Autoclaved Aerated Concrete (AAC) wall applications. Achieves standard impact resistance.

Shelf Life

24 months, if unopened, properly stored and protected from moisture.

Storage

Store off the ground in a dry area. Protect from extreme heat [90°F (32°C)], moisture and direct sunlight.



Decoplast Fiberglass Reinforcing Mesh

Detail Mesh (4.5 oz) / Standard Mesh (4.5 oz)

High Standard Mesh (6.0 oz) / Intermediate Mesh (10.0 oz)

Decoplast Armor 15 Mesh (14.0 oz) / Decoplast Armor 20 Mesh (20.0 oz)

Decoplast Corner Mesh (6.0 oz)

USE CONTINUED

Decoplast Armor 15: for use at ground floors and other areas of anticipated impact in wall claddings. Achieves ultra-high impact resistance when used beneath Decoplast Mesh.

Decoplast Armor 20: Decoplast's heaviest reinforcing fabric, for use at ground floors and other areas of anticipated impact in wall claddings. Exceeds ultra-high impact resistance when used beneath Decoplast Mesh.

SURFACE PREPARATION

Inspect the insulation board surface for planeness, damage or deterioration due to weather or abuse, and repair prior to application of reinforcing mesh. Rasp the insulation board surface.

APPLICATION

Decoplast Intermediate Mesh / Decoplast Mesh / High Standard Mesh:

Apply a layer of base coat over previously rasped insulation board (or, over cement board stucco systems, or, over prepared AAC wall applications). Work horizontally or vertically in full width strips and fully embed mesh into wet base coat by troweling from center to the edges of the mesh. Avoid wrinkles in the mesh and smooth the base coat to eliminate trowel marks. Double wrap mesh at all corners and overlap not less than 2½" (64 mm) at mesh joints.

Decoplast Detail Mesh: Refer to appropriate Decoplast wall claddings specifications.

Decoplast Armor 15 / Armor 20: Apply a layer of Decoplast base coat over previously rasped insulation board. Work horizontally or vertically in full width strips and immediately embed Armor Mesh into the wet base coat. Butt Decoplast Armor Mesh tightly at seams. Apply Decoplast Mesh with appropriate base coat over the Armor Mesh application when dry.

LIMITATIONS

Decoplast Reinforcing Meshes should only be used in accordance with appropriate Decoplast Insulated Wall Cladding Specification or other published recommendations.

HEALTH AND SAFETY

Health Precaution

Contains fiberglass. As with any chemical construction product, exercise care when handling.

Safety Precaution

Wash hands thoroughly after handling. Wear protective gloves/protective clothing/eye protection/face protection.

First Aid:

EYE CONTACT: Immediately flush eyes with plenty of water for at least 15 to 20 minutes. Contact a physician.

Disposal

Dispose of in accordance with local, state or federal regulations.

Warning

KEEP CONTAINER CLOSED WHEN NOT IN USE. KEEP OUT OF THE REACH OF CHILDREN. NOT FOR INTERNAL CONSUMPTION. FOR INDUSTRIAL USE ONLY. Consult the Safety Data Sheet (SDS) for further health and safety information.

LIMITED WARRANTY

This product is subject to a written limited warranty. Refer to Decoplast Specifications for more complete information on proper use and handling of this product.



697 Oakwood Avenue, West Hartford, CT 06110
voice: 860.761.2830 fax: 860.761.2831
www.decoplast.com

This product is intended for use by qualified professional contractors. All information conforms to the standard detail recommendations and specifications for the installation of Decoplast systems and is presented in good faith as of the date of publication of this document. GREENMAKER INDUSTRIES ASSUMES NO LIABILITY, EXPRESSED OR IMPLIED, AS TO THE WORKMANSHIP, ENGINEERING OR ARCHITECTURE OF ANY PROJECT. For more information regarding this product or additional Decoplast products, please contact a Decoplast Representative at (860) 761-2830 or visit our website www.Decoplast.com.



Decoplast Primer

64 Standard Colors / Custom Colors

TECHNICAL DATA

REPORT	TEST METHOD	TEST CRITERIA	TEST RESULTS
Surface Burning	ASTM E-84	< 25 Flame Spread	Pass
		< 450 Smoke Developed	Pass

Decoplast Primer is used for priming prepared concrete, masonry, plaster, EIFS base coat, or drywall surfaces prior to application of Decoplast Finishes and Coatings.

Coverage

800-1000 ft² (74.3-92.9 m²) per pail applied at 4 to 6 wet mils per coat

FEATURES BENEFITS

Acrylic Based	Excellent adhesion; finish coat adhesion improvement
Tinted for Finish	Color uniformity improvement
Substrate Absorption	Improves coverage, water-resistance, and reduces possible efflorescence
Non Vapor Barrier	Allows substrate to breathe naturally
Water-Based	Safe, non-toxic; cleans up with water
Low VOC	Safe for workers and the environment

Packaging

5 gal pail (19L) 47.5 lbs / 21.6 kg per pail

Shelf Life

24 months, if properly sealed and stored.

Storage

Store off the ground in a cool/dry area. Protect from extreme heat [90°F (32°C)], moisture and direct sunlight.

SURFACE PREPARATION

Surfaces must be clean, dry, and free of frost, damage, releasing agents, including dirt, efflorescence, form oil and other foreign matter. Loose or damaged material must be removed by water blasting, sandblasting or mechanical wire brushing and repaired. Avoid application over irregular surfaces. Resurface, patch or level surfaces to required tolerance and smoothness with appropriate Decoplast leveling materials.

Pressure washing is a recommended means of surface preparation. Follow necessary safety precautions and adjust pressure to avoid damage to the underlying substrate or substrate condition. For mold, algae, and mildew removal, treat surfaces with a commercial mildew removal and/or wash product carefully following manufacturer's application and safety directions.



Decoplast Primer

64 Standard Colors / Custom Colors

MIXING

Mix with a clean, rust-free electric drill and paddle to a uniform consistency. Close container when not in use. Clean tools with water immediately after use.

APPLICATION

Apply only to sound and clean, dry, properly prepared surfaces.

Airless Spraying:

Use airless sprayer with minimum 19 mil tip. Use a starting pressure of 1900 psi and adjust as necessary.

As a primer:

Apply at 4-6 wet mils per coat. Multiple coats may be required, depending on surface condition.

Curing/Drying Time

Times assume 70° F (21° C) and 50% relative humidity. Drying time varies with temperature/humidity and surface conditions. Protect installed product from rain, freezing, and continuous high humidity until completely dry.

Clean Up

Clean all tools and equipment immediately with water. Cured material may be removed by mechanical means.

LIMITATIONS

- Use Decoplast Primer only when surface and ambient temperatures are above 40°F (4°C) and below 100°F (38°C) during application and drying period.
- Store Decoplast materials in a cool, dry place.
- Sloped surfaces: Refer to Decoplast details.
- Decoplast Primer should not be used on horizontal surfaces unless protected with appropriate Decoplast Finish materials.
- Do not apply Decoplast Primer to frozen surfaces.

HEALTH AND SAFETY

Health Precaution

Decoplast Primer is water-based. As with any chemical construction product, exercise care when handling.

WARNING!

Causes eye and skin irritation.

Safety Precaution

Wash hands thoroughly after handling. Wear protective gloves/protective clothing/eye protection/face protection.

First Aid:

EYE CONTACT: Immediately flush eyes with plenty of water for at least 15 to 20 minutes. Ensure adequate flushing of the eyes by separating the eye lids with fingers. Get immediate medical attention.

SKIN CONTACT: Immediately wash skin with plenty of soap and water for at least 15 to 20 minutes, while removing contaminated clothing and shoes. Get medical attention if irritation develops or persists.

INHALATION: If inhaled, remove to fresh air. If not breathing give artificial respiration or give oxygen by trained personnel. Seek medical attention immediately.

INGESTION: If swallowed, do NOT induce vomiting. Call a physician or a poison control center immediately. Never give anything by mouth to an unconscious person.

Spills

Contain and clean with appropriate absorbent materials.

Disposal

Dispose of in accordance with local, state or federal regulations.

Warning

KEEP CONTAINER CLOSED WHEN NOT IN USE. KEEP OUT OF THE REACH OF CHILDREN. NOT FOR INTERNAL CONSUMPTION. FOR INDUSTRIAL USE ONLY. Consult the Safety Data Sheet (SDS) for further health and safety information.

LIMITED WARRANTY

This product is subject to a written limited warranty. Refer to Decoplast Specifications for more complete information on proper use and handling of this product.



697 Oakwood Avenue, West Hartford, CT 06110
voice: 860.761.2830 fax: 860.761.2831
www.decoplast.com

This product is intended for use by qualified professional contractors. All information conforms to the standard detail recommendations and specifications for the installation of Decoplast systems and is presented in good faith as of the date of publication of this document. GREENMAKER INDUSTRIES ASSUMES NO LIABILITY, EXPRESSED OR IMPLIED, AS TO THE WORKMANSHIP, ENGINEERING OR ARCHITECTURE OF ANY PROJECT. For more information regarding this product or additional Decoplast products, please contact a Decoplast Representative at (860) 761-2830 or visit our website www.Decoplast.com.



Decoplast Exterior Textured Finishes

Ispica (Freestyle) / Genova (Fine Sand) / San Remo (Coarse Sand)

Trieste (Medium Sand) / Taormina (Fine Swirl) / Graffiato (Medium Swirl)

TECHNICAL DATA

REPORT	TEST METHOD	TEST CRITERIA	TEST RESULTS
Surface Burning	ASTM E-84	< 25 Flame Spread < 450 Smoke Developed	Pass Pass
Flexibility	ASTM D-522	4" mandrel bend	Pass
Water Vapor Transmission	ASTM E-96	28 days	Pass
Accelerated Weathering	ASTM G-154	2000 hours	Pass; No deleterious effects
Freeze-thaw Resistance	ASTM 2485	60 cycles	No deleterious effects; 90 cycles
Mildew Resistance	ASTM D-3273	No growth @ 28 days	Pass
Salt Spray Resistance	ASTM B-117	300 hours	Pass; No deleterious effects
Water Resistance	ASTM D-2247	14 days	Pass; No deleterious effects
Abrasion Resistance	ASTM D-968	528 qts. sand	No cracking, checking or Loss of film integrity @ 528 qts.
Adhesion	ASTM C-297	28 days	> 90 to concrete
Fire Resistance	ASTM E-119	No effect on fire resistance rating of Existing rated assembly	Pass; Classified UL

Decoplast Exterior Textured Finishes are a ready-mixed, 100% acrylic based exterior textured coating used as a decorative wall finish over all approved basecoats, prepared concrete, masonry and plaster substrates.

Coverage

Decoplast Limestone (Ispica): Varies with technique.

Decoplast Fine Sand Finish (Genova): 130-145 ft² (12.1-13.5 m²) per pail.

Decoplast Medium Sand Finish (Trieste): 115- 130 ft² (10.7-12.1 m²) per pail.

Decoplast Coarse Sand Finish (San Remo): 85- 100 ft² (7.9-9.3 m²) per pail.

Decoplast Fine Swirl Finish (Taormina): 125-140 ft² (11.6-13 m²) per pail.

Decoplast Medium Swirl Finish (Graffiato): 130-145 ft² (12.1-13.5m²) per pail.

*Coverages may vary depending on application technique and surface conditions

Packaging

5 gal pail (19L) 68.5 lbs / 31 kg per pail

Shelf Life

24 months, if properly sealed and stored.

Storage

Store off the ground in a cool/dry area. Protect from extreme heat [90°F (32°C)], moisture and direct sunlight.

FEATURES

BENEFITS

Integral Color	Reduced recoating and maintenance; Unlimited Color Options
Weather Resistant	Repulsion of water and resistance of wind-driven rain
Breathable	Resists blistering, peeling and flaking; breathes naturally



Decoplast Exterior Textured Finishes

Ispica (Freestyle) / Genova (Fine Sand) / San Remo (Coarse Sand)

Trieste (Medium Sand) / Taormina (Fine Swirl) / Graffiato (Medium Swirl)

SURFACE PREPARATION

Concrete and masonry surfaces: Surfaces must be clean, dry, and free of frost, damage, releasing agents, including dirt, efflorescence, form oil and other foreign matter. Loose or damaged material must be removed by water blasting, sandblasting or mechanical wire brushing and repaired. Avoid application over irregular surfaces. Resurface, patch or level surfaces to required tolerance and smoothness with appropriate Decoplast leveling materials.

Exterior Insulation and Finish

Decoplast Systems (EIFS): Surface must be free of all releasing agents.

Gypsum wallboard surfaces: Wallboard must be taped and fasteners spotted with joint compound. Surface must be free of dust, dirt and releasing agents. Prime with appropriate Decoplast Primer.

Decoplast recommends priming cementitious substrates using Decoplast primer prior to application of finish.

MIXING

Mix with a clean, rust-free electric drill and paddle to a uniform consistency. A small amount of clean water may be added to aid workability. Limit addition of water to amount needed to achieve the finish texture. Additives are not permitted. Close container when not in use. Clean tools with water immediately after use.

APPLICATION

Apply only to sound and clean, dry, properly prepared surfaces.

Trowel: Apply Decoplast Textured Finish with a clean stainless steel trowel to a rough thickness slightly more than the largest aggregate size. Apply the finish keeping thickness uniform. Maintain a wet edge on Decoplast Textured Finish by applying and texturing continually over the wall surface. Work Decoplast Textured Finish to corners, joints or other natural breaks. Do not allow material to set up within an uninterrupted wall area. Achieve final texture by floating with the appropriate trowel.

Note: Decoplast Ispica (Freestyle) Finish requires two coats.



Decoplast Exterior Textured Finishes

Ispica (Freestyle) / Genova (Fine Sand) / San Remo (Coarse Sand)

Trieste (Medium Sand) / Taormina (Fine Swirl) / Graffiato (Medium Swirl)

APPLICATION Continued

Spray: Decoplast Textured Finishes can be applied with a gravity-feed sprayer, texture spray pump machine, or other appropriate equipment. To ensure full coverage of the surface, apply in an even coat.

IMPORTANT: ALWAYS check color for proper match.

Apply coating continuously, maintain a wet edge to eliminate cold joints. Work Decoplast Textured Finish to corners, joints or other natural breaks. Avoid application in direct sunlight. Protect installed product from rain, freezing, and continuous high humidity until completely dry.

Curing/Drying

Decoplast Textured Finishes dry within 24 –72 hours under normal conditions [70°F (21°C), 50% RH]. Drying time varies with temperature, humidity and surface conditions.

Clean Up

Clean tools and equipment with water immediately after use. Remove dried material from tools and equipment mechanically.

LIMITATIONS

Use Decoplast Textured Finishes only when surface and ambient temperatures are above 40°F (4°C) and below 100°F (38°C) during application and drying period.

Store Decoplast materials in a cool, dry place.

Sloped surfaces: Refer to Decoplast details.

Decoplast Textured Finishes should not be used on weather-exposed horizontal or below grade surfaces or where immersion in water may occur.

Do not apply Decoplast Textured Finish to frozen surfaces.

HEALTH AND SAFETY

Health Precaution

Decoplast Textured Finishes are water-based. As with any chemical construction product, exercise care when handling.

WARNING!

Causes eye and skin irritation.

Safety Precaution

Wash hands thoroughly after handling. Wear protective gloves/protective clothing/eye protection/face protection.

First Aid:

EYE CONTACT: Immediately flush eyes with plenty of water for at least 15 to 20 minutes. Ensure adequate flushing of the eyes by separating the eye lids with fingers. Get immediate medical attention.

SKIN CONTACT: Immediately wash skin with plenty of soap and water for at least 15 to 20 minutes, while removing contaminated clothing and shoes. Get medical attention if irritation develops or persists.

INHALATION: If inhaled, remove to fresh air. If not breathing give artificial respiration or give oxygen by trained personnel. Seek medical attention immediately.

INGESTION: If swallowed, do NOT induce vomiting. Call a physician or a poison control center immediately. Never give anything by mouth to an unconscious person.

Spills

Contain and clean with appropriate absorbent materials.

Disposal

Dispose of in accordance with local, state or federal regulations.

Warning

KEEP CONTAINER CLOSED WHEN NOT IN USE. KEEP OUT OF THE REACH OF CHILDREN. NOT FOR INTERNAL CONSUMPTION. FOR INDUSTRIAL USE ONLY. Consult the Safety Data Sheet (SDS) for further health and safety information.

LIMITED WARRANTY

This product is subject to a written limited warranty. Refer to Decoplast Specifications for more complete information on proper use and handling of this product.



697 Oakwood Avenue, West Hartford, CT 06110
voice: 860.761.2830 fax: 860.761.2831
www.decoplast.com

This product is intended for use by qualified professional contractors. All information conforms to the standard detail recommendations and specifications for the installation of Decoplast systems and is presented in good faith as of the date of publication of this document. GREENMAKER INDUSTRIES ASSUMES NO LIABILITY, EXPRESSED OR IMPLIED, AS TO THE WORKMANSHIP, ENGINEERING OR ARCHITECTURE OF ANY PROJECT. For more information regarding this product or additional Decoplast products, please contact a Decoplast Representative at (860) 761-2830 or visit our website www.Decoplast.com.



Warranty No. : **SAMPLE**

- 5 - YEAR_ LIMITED WARRANTY

Disclaimers and Limitations of Remedies

"Material"



Greenmaker Industries warrants to the below Owner that for the - 5 - year Warranty Period stated above and subject to the exceptions listed below, the " _____ " (the "system") described above, as properly applied by the Registered Applicator, will maintain its bond, be water resistant and will not peel, flake or chip. For any valid claim presented under this Warranty, Greenmaker Industries will supply Owner with replacement materials and labor required to Repair any non-conforming portions of the installed System. Any replacement materials provided hereunder will also be subjected to all the provisions of the Warranty during the Warranty Period shown above.

WARRANTIES DISCLAIMED – THE WARRANTY STATED IN THE PARAGRAPH ABOVE IS IN PLACE OF ALL OTHER WARRANTIES, EXPRESSED OR IMPLIED. GREENMAKER INDUSTRIES EXPRESSLY DISCLAIMS ANY OTHER WARRANTIES INCLUDING WARRANTIES OF MERCHANTABILITY AND FITNESS FOR A PARTICULAR PURPOSE. ALTHOUGH GREENMAKER INDUSTRIES MAY HAVE SUGGESTED THE MATERIAL OR DEVELOPED THE MATERIAL AT THE REQUEST OF THE GC, OWNER OR OWNERS REP, IT IS THE RESPONSIBILITY OF THE MANUFACTURER TO TEST AND DETERMINE THE SUITABILITY OF THE MATERIAL FOR THE INTENDED USE AND PURPOSE, AND THE APPLICATOR ASSUMES ALL RISK AND LIABILITY WHATSOEVER REGARDING SUCH SUITABILITY IF NOT INSTALLED AS PER MANUFACTURER SPECIFICATIONS.

LIMITATIONS OF REMEDIES AND DAMAGES – THE REPLACEMENT/REFUND REMEDY STATED IN THIS WARRANTY TAKES THE PLACE OF ALL OTHER REMEDIES AGAINST GREENMAKER INDUSTRIES AND IS THE ONLY REMEDY AGAINST DECOPLAST SYSTEMS, INC. AVAILABLE TO OWNER OR TO ANY OTHER PARTY, IN NO EVENT WILL GREENMAKER INDUSTRIES BE LIABLE FOR SPECIAL, INDIRECT, INCIDENTAL OR CONSEQUENTIAL DAMAGES (INCLUDING LOST PROFITS) ARISING OUT OF OR CONNECTED TO THE MATERIALS OR THE SYSTEM, OR TO ANY USE OR MISUSE OF THE MATERIALS OR THE SYSTEM, REGARDLESS OF ANY STRICT LIABILITY OR ACTIVE OR PASSIVE NEGLIGENCE OF GREENMAKER INDUSTRIES AND REGARDLESS OF THE LEGAL THEORY (CONTRACT, TORT OR OTHER) USED TO MAKE A CLAIM, IN NO EVENT WILL GREENMAKER INDUSTRIES BE OBLIGATED TO PAY DAMAGES IN ANY AMOUNT EXCEEDING THE ORIGINAL PRICE OF THE MATERIALS SHOWN TO BE DEFECTIVE. For customer relations purposes, Greenmaker industries may in its sole discretion choose to make some

efforts beyond its legal obligations. Such additional efforts will not in any way change the limitations of remedies and damages stated in this paragraph or extend or change this Warranty.

Exclusions: The warranty described above does not cover, and Greenmaker Industries will have no liability for any damage or failure of the System caused by or due to any of the following:





1. Lightning, earthquake, windstorm, hurricane, tornado, hail, fire, flood or other unusual phenomena of the elements or acts of nature.
2. Settlement, movement, deflection, warpage, distortion, displacement or any other failure of the substrate. Such failures are the sole responsibility of the substrate manufacturer.
3. Cracks, breaks or openings in the substrate to which the System is applied.
4. Surface alterations, additions, object placed or installations made on the finished surface.
5. Use of the finished surface as something other than an exterior wall (such as a recreational area or walking surface).
6. Penetration, vandalism, damage or attack by third parties and foreign objects or agents, including but not limited to chemicals, animals and plant life.
7. Discoloration or change in visual appearance due to accumulation or streaking of dirt or other airborne materials deposited on the surface from the atmosphere.
8. Sealant failure or water penetration due to leaks through windows, air conditioning units, holes, louvers, vents, or other non-System elements made part of a System installation.
9. Other (explain):

Furthermore, the warranty described above does not cover, and Greenmaker Industries will have no liability for, any repairs to the System or repaired portions of the System, except as set forth in the sections covering Repairs and Emergency Repairs, below.

Warranty Claims. Owner shall notify Greenmaker Industries immediately of any alleged defect in the materials covered by this Warranty. Owner will provide Greenmaker Industries with a reasonable opportunity to review and investigate the alleged defect. For any valid claim presented under the Warranty, Greenmaker Industries will provide the Owner with a remedy as described above. For any claim that is not valid, Owner will pay Greenmaker Industries reasonable charges, including travel and labor, associated with investigation of such claim.

Repairs. Any portions of the System either repaired by Greenmaker Industries or repaired by Applicator and approved in writing by Greenmaker industries will be subject to the terms of this Warranty for the remainder of the Warranty Period.

Emergency Repairs. If immediate and material damage to the building and its contents is imminent due to an alleged failure of the System, the Owner may, at its own expense, make such temporary repairs as may reasonable be required to prevent such damage. If Greenmaker Industries thereafter determines that the temporary repairs were necessitated by a failure of the System, Greenmaker Industries will provide a remedy as described above. If Greenmaker Industries determines that such emergency repairs were made in accordance with Greenmaker Industries standards, such repaired

portions will be subject to the terms of this Warranty for the remainder of the Warranty Period. If Greenmaker Industries determines that the temporary repairs were either not necessitated by a failure

of the System, or were not made in accordance with Greenmaker Industries standards, the warranty described in this Warranty will be null and void with respect to the repaired portions of the System. In no case will



Greenmaker Industries be held responsible for any damages done to the System by others in performing any repairs.

Voidability. The limited warranty contained herein will become null and void upon notice by Greenmaker Industries if:

1. Owner fails to provide prompt notification of any alleged defect in the System.
2. Owner denies Greenmaker Industries a reasonable opportunity to review and investigate an alleged failure of the System; or
3. Owner fails to pay when due the full contract price for the System and any other charges owing to Greenmaker Industries under the terms of this Warranty; provided, however, that all other terms of this limited warranty, including warranty disclaimers and limitations of remedies and damages, will remain in full force and effect despite such a nullification.

Assignability. The transfer of this Warranty to a new owner may be made only if acknowledged in writing by Greenmaker Industries to the new owner. Greenmaker Industries must be notified at the time of sale to the new owner, and Greenmaker Industries must be satisfied that the intended use of the structure by the new owner will not cause detriment to the System.

Validation. This Warranty is void unless signed by authorized representatives of Greenmaker Industries

Complete Agreement. This Warranty completely replaces and supersedes any prior oral or written warranties agreements or representations relative to the System, The System material or the application of such materials. No one other than an officer or general manager of Greenmaker Industries is authorized to change this Warranty or any of its provisions.

Owner:

Location:

Certified Applicator:

General Contractor:

Company Issuing Warranty: **Greenmaker Industries**

Project Size: _____ SFT System Installed: _____

Date Product Purchased: ___/___/___ thru: ___/___/___

Warranty Expiration Date: ___/___/___

Signature & Title: *Michael Jalbert* Technical Director Date: ___/___/___



697 Oakwood Avenue, West Hartford, CT 06110
voice: 860.761.2830 fax: 860.761.2831
www.decoplast.com