



Submittal Package

Project: _____

Location: _____

Architect: _____

General Contractor: _____

Applicator: _____

Submittal Info

DDARS Notched DDARS Speedcoat Coatings
 DTS Heritage DDS Direct FRS Stucco
 DDARS XPS NOTCHED ci DDARS XPS Speed Coat ci
 FRS Stucco XPS ci Weather Barrier

System Data
 Product Data
 Specification
 Details
 Sample Warranty

Greenmaker Industries / Decoplast is a manufacturer of EIFS Paints, Primers, Textured Finishes, Venetian Plasters, and Adhesives & Basecoats. With over 30 years in the Coatings Industry Decoplast products have been applied on over a quarter billion square feet of wall surfaces throughout; North America, South America, Europe, Asia, and the Caribbean.

- Over 30 Years in the Coatings Industry
- No Product Failures
- 5 -20 Year Labor & Material Warranties
- Over 250 Million Square Feet Installed
- AIA Accredited Provider # 40107627



697 Oakwood Avenue, West Hartford, CT 06110
 voice: 860.761.2830 fax: 860.761.2831
 www.decoplast.com



decoplast

Your Source for Exterior Insulation & Finish Systems

Welcome to Decoplast!

For over 30 years, Decoplast Systems have been used all over the world carrying out the beauty, elegance and sophistication intended by design. Shopping Centers, Single Family Homes, Assisted Care Living Developments, Franchises, National Chains, Restaurants, Office Buildings, Hotels, Sports Complexes and Museums are just a few of the examples.

Our mission has always been to supply the EIFS / Stucco industry with products of superior quality. This is done by incorporating the latest technology along with constant monitoring, testing and refining of our entire product line. In addition to product quality, Decoplast believes in supplying Architects, Developers, Contractors, Homeowners and all valued customers with unprecedented quality in service, while maintaining competitive pricing.

Today, Decoplast is focused on our natural environment. Our most recent commitment is producing materials used in "Green Building" design. A "Green Building" minimizes a structure's environmental impact, reduces operation costs and enhances occupant comfort and well-being. We truly recognize this importance and are dedicated to making a significant contribution.

Please visit www.DECOPLAST.com We welcome any inquires that you may have.



697 Oakwood Avenue, West Hartford, CT 06110
voice: 860.761.2830 fax: 860.761.2831
www.decoplast.com



QUALIFICATION STATEMENT

Date:

Submitted To:

Project:

Decoplast is pleased to provide the following qualification statement for your review.

With industry building science expertise, and provision to offer superior products, warranty protection, service, support and design, Greenmaker Industries / Decoplast provides a single source for all of your EIFS, Stucco, Masonry Construction and Coating needs.

We offer a full line of products that meet today's energy, performance and design requirements.

From building envelope design to sustainable maintenance and restoration, Decoplast provides a smarter alternative.

- *Over 30 Years in the Coatings Industry*
- *Zero product failure to date*
- *10 – 20 Year Labor and Material Warranties*
- *Over 250 million SF of product sold worldwide*
- *Miami Dade Code Compliant (NOA # 15-1118.06)*
- *FL Product Approval (FL16250.1-RO)*
- *AIA Provider # 40107627*
- *Texas Department of Insurance EC-79*
- *ICC ESR- 3428*
- *NFPA-285 Compliant (reference UL Labs Project # 4787376813)*
- *NFPA-268 Compliant (SWRI # 21604.01.209)*
- *ASTM-E119 Compliant (reference UL Labs Project # 4787376813)*

In an industry where the competition is cutting back,



ORGANIZATION

Greenmaker Industries / Decoplast is a manufacturer of EIFS Paints, Primers, Textured Finishes, Venetian Plasters and Adhesives & Basecoats. Decoplast products have been applied on over a quarter-billion square feet of wall surfaces throughout North America, South America, Europe, Asia, and the Caribbean.

KEY INDIVIDUALS

- President: John C. Di Stefano
- National Sales Manager: Mike Jalbert
- Mid-Atlantic: John Macluckie
- Northwest FL / Panhandle: Marty McDonald
- Southeast: Randall Cowart
- Florida: Brian Jordan
- Texas: Araceli De Leon
- Technical Service: Bobby Khan
- Customer Service and Inside Sales: Luisa DosSantos
- Head of Production and Product Development: Athos Perin
- Architectural Sales Support Mid Atlantic: Debra Bury
- Architectural Sales Support Northeast: Dominique Cipriani

COMPANY SPECIALTIES

- EIFS Exterior Insulation and Finish System
- Venetian Plaster
- Paints and Architectural Specialty Coatings
- Design Build Planning
- Jobsite Inspections

MANUFACTURING LOCATIONS

- West Hartford, CT
- Ispica RG, Italy
- Castelfranco Veneto, Italy

INDUSTRY AFFILIATIONS

- AWCI Association of Walls and Ceilings - 3rd Party Certified for EIFS
- Northwest Walls and Ceilings
- FAWCI Florida Walls and Ceilings
- PDCA Painting and Decorating Association



PERFORMANCE

With over a quarter-billion square feet of products sold worldwide and over 30 years in the coatings industry, Decoplast products have never had a product failure. With our stringent and renowned quality control procedures, from manufacturing to installation, Decoplast is one of the only products never named in a class action lawsuit for product failure.

WARRANTY

Decoplast is proud to offer the most aggressive and complete material and labor warranties in the industry. Decoplast has labor and material warranties that range from 5-20 years for both labor and material. We at Decoplast stand behind our product. With our Project Inspection Program, Decoplast requires that our systems are installed by a registered Decoplast applicator to insure that our products may last many years beyond the life of the warranty.

SHORT LIST OF PROJECTS COMPLETED

HOSPITALITY

- The Wynn Hotel and Casino - Las Vegas, NV (completed in 2007 /250,000 SF)
- Excalibur Hotel and Casino - Las Vegas, NV (completed in 2006)
- Sonesta Hotels and Condos - Sanibel Island, FL
- Hard Rock Hotel and Casino - Fort Lauderdale, FL (completed in 2004)
- Hilton Hotel Properties
 - Home 2 Suites (Gulfport, MS)
 - Home 2 Suites (Pensacola, FL)
 - Hampton Inn (Gulf Shores, AL)
 - Hampton Inn (Milwaukie, WI)
 - Hampton Inn (Gulfport, MS)
 - Hampton Inn (Bartonsville, PA)
 - Hampton Inn (Panama City, FL)
 - TRU Hotel (McDonough, GA)
- Walt Disney World – Orlando, FL (completed in 2001)
- Flamingo Hotel Casino - Las Vegas, NV (completed in 2002)
- Holiday Inn Express
- Hotel RIU Plaza - NY, NY
- Choice Hotels Group
- Marriott Hotel Group
 - Fairfield Inn (Plainville, CT)
 - Fairfield Inn (181 3rd AVE Brooklyn, NY)
 - Town Place Suites (Shalimar, FL)
 - Fairfield Inn (Atmor, AL)
 - Fairfield Inn (Saraland, AL)
 - Fairfield Inn (Meridian, MS)
 - Fairfield Inn (Gulfport, MS)

SHORT LIST OF PROJECTS COMPLETED CONTINUED

COMMERCIAL / RETAIL / MIXED-USE—RESIDENTIAL / RESTAURANT

- Conde Nast Building - Times Square, NY, NY (completed in 1997)
- Tiffany Company Store - Nationally Specified (85 Locations completed to date)
- Empire State Building (completed in 1984)
- Arizona Beverage Company Headquarters (completed in 2000)
- CVS Pharmacy - Nationally Specified (Over 250 stores completed to date)
- Old Navy
- Wendy's
- Anthropology Stores (Nationally Specified)
- Pottery Barn Stores (Nationally Specified)
- Altar'd State Retail Stores (Nationally Specified)
- McDonald's (Over 200 stores completed to date)
- Burger King (Over 125 stores completed to date)
- LA Fitness
- Dunkin Donuts
- Dunkin Donuts Stadium Hartford CT
- Shops @ Corpus - Corpus Christie, Texas
- Taco Bell
- O'Reilly Auto Parts
- Advance Auto Parts
- Auto Zone
- TJ Maxx
- Verizon Wireless
- Publix
- Petco
- Villagio at Yarrow Bay, Washington State (500,000 SF)

GOVERNMENTAL / CIVIC / EDUCATIONAL

- Naval Air Station Patuxent River, MD
- UNLV Library and Dorms – Las Vegas, NV (completed in 1998)
- Yankee Stadium (completed in 2008)
- City Field (completed in 2008)
- CIA Building – Langley, VA (completed in 2005)
- American Consulate – Rome, Italy (completed 1985)
- Yale University - New Haven, CT (completed in 1995)
- MOMA Museum of Modern Art (1992 and expansion in 2003)
- Arthur Ash Tennis Stadium -Flushing Meadows, NY



697 Oakwood Avenue, West Hartford, CT 06110
voice: 860.761.2830 fax: 860.761.2831
www.decoplast.com

CSI SECTION 09 24 00 – PORTLAND CEMENT PLASTER *Fiber Reinforced Stucco with Enhanced Crack Resistance (Optional)*

SYSTEM OVERVIEW

The Decoplast Decowall Stucco Assembly, when installed over CMU, can be either direct applied or installed with lath as per this specification.

For direct application, See Decowall on CMU Stucco Assembly Specification. Additional information is also provided in Technical Bulletin

The Decoplast Decowall / Spec- Mix is qualified on fire rated and non-combustible construction. Specifics for these wall assemblies and allowable continuous insulation thickness are listed in the ICC Evaluation Report ESR 3018.

PART 1 - GENERAL

1.1 SECTION INCLUDES

- A. Supply and installation of fiber reinforced, one-coat stucco assembly with optional enhanced crack resistance.

1.2 RELATED SECTIONS

- A. Section 03 30 00 - Cast-in-Place Concrete
- B. Section 04 20 00 - Unit Masonry
- C. Section 06 16 00 - Sheathing
- D. Section 07 25 00 - Weather Barriers
- E. Section 07 62 00 - Sheet Metal Flashing and Trim
- F. Section 07 90 00 - Joint Protection
- G. Section 08 50 00 - Windows
- H. Section 09 21 16 - Gypsum Board Assemblies

1.3 REFERENCES

- A. ASTM C144 Standard Specification for Aggregate for Masonry Mortar
- B. ASTM C578 Specification for Preformed, Cellular Polystyrene Thermal Insulation
- C. ASTM C847 Standard Specification for Metal Lath
- D. ASTM C897 Standard Specification for Aggregate for Job-Mixed Portland Cement-Based Plaster
- E. ASTM C926 Standard Specification for Application of Portland Cement-Based Plaster
- F. ASTM C933 Standard Specification for Welded Wire Lath
- G. ASTM C1032 Standard Specification for Woven Wire Plaster Base
- H. ASTM C1063 Standard Specification for Installation of Lathing and Furring for Portland Cement Based Plaster
- I. ASTM C1177 Specification for Glass Mat Gypsum for Use as Sheathing
- J. ASTM C1278 Specification for Fiber-Reinforced Gypsum Panel
- K. ASTM C1396 Standard Specification for Gypsum Board
- L. ASTM E84 Test Method for Surface Burning Characteristics of Building Materials
- M. ASTM E119 Method for Fire Tests of Building Construction and Materials
- N. ASTM E330 Test Method for Structural Performance of Windows, Curtain Walls, and Doors by Uniform Static Air Pressure Difference
- O. ASTM G153 Standard Practice for Operating Enclosed Carbon Arc Light Apparatus for Exposure of Nonmetallic Materials
- P. ICC AC 11 Acceptance Criteria for Cementitious Exterior Wall Coating

Q. ICC AC 219 Acceptance Criteria for Exterior Insulation and Finish Systems

1.4 ASSEMBLY DESCRIPTION

[A. Decowall FRS Stucco Assembly: water resistive barrier sheet, wire fabric or metal lath, pre-mixed stucco base coat, and either an acrylic or elastomeric based finish coat.

-OR-

[B. Decowall FRS Stucco Assembly with Enhanced Crack Resistance: water resistive barrier sheet, wire fabric or metal lath, pre-mixed stucco base coat, fiberglass reinforcing mesh embedded in stucco leveling coat, and either an acrylic or elastomeric based finish coat.

C. Stucco Functional Criteria:

1. General: Stucco application shall be to vertical substrates or to substrates sloped for positive drainage. Substrates sloped for drainage shall have additional protection from weather exposure that might be harmful to coating performance.
2. Testing to meet International Code Council Acceptance Criteria AC11.
3. Performance Requirements of Coatings applied to Expanded Polystyrene features: Must comply with ASTM E 2568 or ICC Acceptance Criteria AC 219 for EIFS.
4. Substrate materials and construction shall conform to the building code having jurisdiction.
5. Substrates shall be sound, dry and free of dust, dirt, laitance, efflorescence and other harmful contaminants.
6. Substrate Dimensional Tolerances: Flat with 1/4 in (6.4 mm) within any 10 ft (3 m) radius.
7. Maximum deflection of substrate system under positive or negative design loads shall not exceed L/360 of span.

D. Expansion and Control Joints: Continuous expansion and control joints shall be installed at locations in accordance with ASTM C1063 and ASTM C926.

1. Substrate movement, and expansion and contraction of stucco and adjacent materials shall be taken into account in design of expansion joints, with proper consideration given to sealant properties, installation conditions, temperature range, coefficients of expansion of materials, joint width to depth ratios, and other material factors. Minimum width of expansion joints shall be as specified by the designer or shown on the project drawings.
2. In accordance with ASTM C1063, expansion or control joints shall be installed in walls not more than 144 ft² (13.4 m²) in area, and not more than 100 ft² (9.3 m²) in area for all non-vertical applications. The distance between joints shall not exceed 18 ft (5.5 m) in either direction or a length-to-width ratio of 2-½ to 1.

1.5 SUBMITTALS

A. General: Submit Samples, Evaluation Reports and manufacturer's product data sheets in accordance with Division 1 General Requirements Submittal Section.

B. Samples: Submit samples for approval. Samples shall be of materials specified and of suitable size as required to accurately represent each color and texture used on project. Prepare each sample using same tools and techniques for actual project application. Maintain and make available, at job site, approved samples.

C. Manufacturer's Warranty: Submit sample copies of Manufacturer's Warranty indicating Single Source Responsibility for stucco assembly materials.

1.6 QUALITY ASSURANCE

A. Qualifications:

1. Manufacturer: Shall have marketed stucco assemblies in United States for at least ten years and shall have completed projects of same general scope and complexity.
2. Applicator: Shall be experienced and competent in installation of stucco materials, and shall provide evidence of a minimum of five years' experience in work similar to that required by this section.

1.7 DELIVERY, STORAGE, AND HANDLING

- A. Delivery: Deliver stucco assembly materials in original packaging with manufacturer's identification.
- B. Storage: Store stucco assembly materials in a dry location, out of direct sunlight, off the ground, and protected from moisture.

1.8 SITE / ENVIRONMENTAL CONDITIONS

- A. Substrate Temperature: Do not apply stucco assembly materials to substrates whose temperature are below 40°F (4°C) or contain frost or ice.
- B. Inclement Weather: Do not apply stucco assembly materials during inclement weather, unless appropriate protection is employed.
- C. Sunlight Exposure: Avoid, when possible, installation of the stucco assembly materials in direct sunlight. Application of finishes in direct sunlight in hot weather may adversely affect aesthetics.
- D. Do not apply stucco base coats or finishes if ambient temperature falls below 40°F (4°C) within 24 hours of application. Protect stucco materials from uneven and excessive evaporation during dry weather and strong blasts of dry air.
- E. Prior to installation, the substrate shall be inspected for surface contamination, or other conditions that may adversely affect the performance of the stucco assembly materials, and shall be free of residual moisture.

1.9 COORDINATION AND SCHEDULING

- A. Coordination: Coordinate stucco assembly installation with other construction operations.

1.10 WARRANTY

- A. Warranty: Upon request, at completion of installation, provide manufacturer's Standard Limited Warranty.

EDITOR NOTE: SEE MANUFACTURER'S WARRANTY SCHEDULE FOR AVAILABLE STUCCO ASSEMBLY WARRANTIES.

PART 2 - PRODUCTS

2.1 MANUFACTURERS

- A. Manufacturer, Basis of Design: DECOPLAST., 697 Oakwood Avenue, West Hartford, CT,06110
Contact: Architectural Sales or Technical Support (860.761.2830).
- B. Components: Obtain components manufactured by DECOPLAST of Decowall FRS Stucco Assembly from authorized distributors. No substitutions or additions of other materials are permitted without prior written permission from DECOPLAST for this project.

2.2 MATERIALS

EDITOR NOTE: STUCCO BASE MAY BE APPLIED IN 2 PASSES UP TO AN APPROXIMATE THICKNESS OF BETWEEN 3/4 AND 7/8 INCHES. WHEN INSTALLED AT THIS THICKNESS IT MUST BE MOIST CURED IN ACCORDANCE WITH IBC OR IRC, AS APPLICABLE, FOR PORTLAND CEMENT PLASTER.

- A. Decoplast Decowall Stucco Base (3/8 in – 1/2 in per coat):
 - [1. Decoplast Decowall Stucco Base Concentrate: Proprietary mixture of portland cement and proprietary ingredients mixed with clean, cool, potable water, and ASTM C897 or ASTM C144 sand added in the field.
 - OR-
 - [2. Decoplast Decowall Stucco Base Sanded: Proprietary mixture of portland cement, and proprietary ingredients mixed with clean, cool, and potable water in the field.

EDITOR NOTE: MODIFY BELOW TO SUIT REQUIREMENTS. CHOOSE OPTIONAL ACRYLIC EMULSION FOR ENHANCED PERFORMANCE.

- [B. Stucco Admix
 - 1. Decoplast Decoprep Admix & Bonding Agent: 100% acrylic emulsion additive for portland

cement based products to enhance curing, adhesion, freeze-thaw resistance and workability and as an acrylic polymer bonding agent.

EDITOR NOTE: MODIFY BELOW TO SUIT REQUIREMENTS. CHOOSE LEVELING AND REINFORMING COAT (C.) FOR ENHANCED CRACK RESISTANCE.

[C. Leveling and Reinforcing Coat:

- [1. Decoplast Premium Basecoat: Copolymer based, factory blend of cement and proprietary ingredients requiring addition of water.
- [2. Decoplast Liquid Basecoat & Adhesive: 100% acrylic polymer base, requiring the addition of portland cement.
- [3. Decoplast Decolastic Ground Coat: Copolymer based, factory blend of cement and proprietary ingredients requiring addition of water and cement.
4. Decoplast Reinforcing Meshes:
 - [a. Decoplast Stucco Mesh: Weight 4.5 oz/yd² (153 g/m²) reinforcing mesh.
 - [b. Decoplast Standard Mesh: Weight 4.5 oz/yd² (153 g/m²) reinforcing mesh.
 - [c. Decoplast Intermediate Mesh: Weight 12 oz/yd² (407 g/m²) reinforcing mesh.

[D. Expanded Polystyrene Features over Stucco:

1. Adhesive and Base Coat:
 - [a. Decoplast Premium Dry Basecoat and Adhesive: Copolymer based, factory blend of cement and proprietary ingredients requiring addition of water.
 - [b. Decoplast Decolastic Ground Coat Base Coat & Adhesive Base Coat & Adhesive: 100% acrylic elastomeric polymer base, requiring the addition of portland cement.
 - [c. Decoplast Liquid Base Coat & Adhesive: 100% acrylic polymer base, requiring the addition of portland cement.
2. Insulation Board:
 - a. In compliance with manufacturer's requirements for Decoplast EIFS.
 - b. Produced and labeled under a third party quality program as required by applicable building code; and produced by a manufacturer approved by Decoplast.
 - c. Shall conform to ASTM C578, ASTM E2430 Type I, and the Decoplast specification for Molded Expanded Polystyrene Insulation board.
3. Reinforcing Mesh:
 - [a. Decoplast Standard Mesh: Weight 4.5 oz/yd² (153 g/m²) reinforcing mesh.
 - [b. Decoplast Short Detail Mesh: Reinforcing mesh used for back wrapping and details.

EDITOR NOTE: MODIFY BELOW TO SUIT REQUIREMENTS. CHOOSE PRIMER FOR MAXIMUM FINISH MATERIAL COVERAGE, AESTHETICS, AND EXTENDED WARRANTY.

[E. Primer:

- [1. Decoplast Primer: 100% acrylic based primer to prepare surfaces for acrylic or elastomeric finishes.
- [2.

EDITOR NOTE: MODIFY BELOW TO SUIT REQUIREMENTS. CHOOSE ONE FINISH TYPE, TEXTURE, & COLOR WITH ACCESSORY MATERIALS TO CREATE DESIRED EFFECT.

F. Finish:

- [1. Decoplast Decosil: 100% acrylic polymer based finish, enhanced DPR acrylic finish with hydrophobic and photocatalytic properties, repels water, reflects UV rays, and reduces smog particles near the finish surface. Finish type, texture and color as selected by Project Designer.
- [2. Decoplast Standard Finish: Factory blended, 100% acrylic polymer based finish, integrally colored. Finish type, texture and color as selected by Project Designer.

- [3. Decoplast Decolastic Finish: Factory blended, 100% acrylic polymer based elastomeric textured finish, integrally colored. Finish type, texture and color as selected by Project Designer

2.3 RELATED MATERIALS AND ACCESSORIES

- A. General: Stucco assembly materials and related materials.
- B. Substrate Materials:
 - [1. Gypsum Sheathing: Minimum 1/2 in (13 mm) thick, core-treated, weather-resistant, exterior gypsum sheathing complying with ASTM C79 or ASTM C1177.
 - [2. Cement Board Sheathing, Minimum 1/2 in thick, conforming to ASTM C1186.
 - [3. Fiberboard: Minimum 1/2 in (13 mm) thick fiberboard complying with ANSI/AHA A194.1 as a regular density sheathing.
 - [4. Plywood: Minimum 5/16 in (8 mm) thick exterior grade or Exposure I plywood for studs spaced 16 in (406 mm) o.c. and 3/8 in (9 mm) thick exterior type plywood minimum for studs spaced 24 in (610 mm) o.c. Plywood shall comply be exterior grade or Exposure 1 and comply with DOC PS-1.
 - [5. Oriented Strand Board (OSB): 7/16 -1/2 in Wall-16 or Wall-24, approved by the APA, TECO, or PSI/PTL. Stamped as Exposure 1 or Exterior Sheathing with a PS2 or PRP-108 rating. For OSB limitations on See Decoplast Technical Bulletin; EIFS and Stucco; Acceptable Substrates and Areas of Use.
 - [6. Concrete Masonry Construction: Painted (coated) and non-painted (uncoated). Shall be in conformance with the building code.
 - [7. Other Approved by stucco assembly manufacturer in writing prior to the project.
- C. Water-Resistive Barriers:
 - [1. For non-wood based sheathing shall be either:
 - [a. 1 layer asphalt-saturated felt complying with ASTM D 226 Type I.
 - [b. Lath with appropriate paper backing.
 - [c. Other recognized equivalent.
 - [2. For wood based sheathing shall be either:
 - [a. 2 layers of Grade D asphalt saturated Kraft building paper, or 1 layer of the Kraft building paper plus paper backed lath.
 - [b. Other recognized equivalent.
 - [3. Open Framing:
 - [a. 1 layer Grade D asphalt saturated Kraft building paper.
 - [b. 1 layer asphalt-saturated felt complying with ASTM D 226 Type I.
 - [c. Other recognized equivalent.

EDITOR NOTE: FOR THE USE OF CONTINUOUS INSULATION AND REQUIRED DRAINAGE FOLLOW THE DECOWALL SPECIFICATIONS.

EDITOR NOTE: THE SELECTION OF AN APPROPRIATE TYPE OF MATERIAL FOR LATH AND ACCESSORIES SHALL BE DETERMINED BY APPLICABLE SURROUNDING CLIMATIC AND ENVIRONMENTAL CONDITIONS SPECIFIC TO THE PROJECT LOCATION, SUCH AS SALT AIR, INDUSTRIAL POLLUTION, HIGH MOISTURE, OR HUMIDITY.

- D. Lath and Accessories: Conform to ASTM C847, ASTM C933, ASTM C1032, ASTM C1063 and Appendix.
 - 1. Accessories: Manufacturer's standard steel products with minimum G60 galvanizing unless otherwise indicated as rigid polyvinyl chloride (PVC plastic) or zinc alloy.

EDITOR NOTE: SELECT LATH TYPE AND WEIGHT.

2. Metal Plaster Bases: Minimum 17 gauge self-furred stucco netting, minimum 2.5 lb/yd² (1.4 kg/m²) or 3.4 lb/yd² (1.8 kg/m²) expanded metal diamond lath, or welded wire lath in accordance with applicable codes and standards.
3. Weep Screeds: Foundation weep screed with minimum 3-1/2 inch vertical attachment flange.

EDITOR NOTE: THE SELECTION AND USE OF AN APPROPRIATE TYPE OF SEALANT SHALL BE DETERMINED BY APPLICABLE SURROUNDING CLIMATIC AND ENVIRONMENTAL CONDITIONS SPECIFIC TO THE PROJECT LOCATION.

- E. Seals, Sealants and Bond Breakers: Sealants shall conform to ASTM C 920, Grade NS, Class 25, Use NT. Backer rod shall be closed-cell polyethylene foam.

PART 3 - EXECUTION

3.1 EXAMINATION

- A. Verify project site conditions under provisions of Section 01 00 00.
- B. Compliance: Comply with manufacturer's instructions for installation of stucco assembly materials.

REMINDER: STUCCO ASSEMBLY MUST INSTALLED OVER A CODE COMPLYING WATER RESISTIVE BARRIER OR SOLID SURFACE OD MASONRY OR CONCRETE. WALL PERFORMANCE IS DEPENDENT UPON, AMONG OTHER FACTORS, PROPER FLASHING AND JOINT SEALING, AND ATTENTION TO PROPER FLASHING AND JOINT SEALANT DETAILS INDICATED ON DRAWINGS.

- C. Substrate Examination: Examine prior to stucco base installation as follows:
 1. Substrate shall be of a type approved by stucco assembly manufacturer and the building code having jurisdiction. Plywood and OSB substrates shall be gapped 1/8 in (3.2 mm) at all edges.
 2. Substrate shall be examined for soundness, and other harmful conditions.
 3. Substrate shall be free of dust, dirt, laitance, efflorescence, and other harmful contaminants.
 4. Substrate construction in accordance with substrate material manufacturer's specifications and applicable building codes.
- D. Advise Contractor of discrepancies preventing proper installation of stucco assembly. Do not proceed with the stucco assembly work until unsatisfactory conditions are corrected.

3.2 PREPARATION

- A. Water-Resistive Barrier:
 1. The water-resistive barrier is placed over all substrates except concrete or unpainted masonry. Painted (coated) CMU is to use a bond breaker such as asphalt paper and lath if the paint or coating cannot be removed.
 2. Installed according to manufacturer's instructions.

EDITOR NOTE: FOR THE USE OF CONTINUOUS INSULATION AND REQUIRED DRAINAGE FOLLOW THE ARMOURWALL 100 HE SPECIFICATIONS.

IMPORTANT EDITOR NOTE: COORDINATE TERMINATIONS OF STUCCO ACCESSORIES WITH SEALANT SECTION OF THE SPECIFICATION IN ORDER TO LEAVE REQUIRED SPACINGS FOR SPECIFIED JOINT DIMENSIONS.

- B. Wire Fabric Lath and Metal Lath: Install according to manufactures specifications

FOR DIRECT APPLICATION TO CONCRETE OR MASONRY, SEE DECOWALL FRS ON CMU STUCCO ASSEMBLY SPECIFICATION.

- C. Concrete (Cast-in-Place): Provide a surface that is straight and true to line and plane. Remove form ties and trim projecting concrete so it is even with the plane of the wall. Remove form release agents.
- D. Concrete Masonry Units: Remove projecting joint mortar so it is even with the plane of the wall.
- E. Ensure that metal flashing has been installed per Specification Section 07 60 00 - Flashing and Sheet Metal.

3.3 MIXING

- A. Mix proprietary products in accordance with manufacturer's instructions, including the applicable stucco assembly product data sheets and application guidelines.
- [B. Admix: Decoplast DecoPrep
 - 1. Mix up to 1 gal (3.8 L) per 1 bag of Decowall FRS Stucco Base Concentrate. Mix up to 1 qt (1 L) per bag of Decowall FRS Stucco Base Sanded. Add after dry components and the majority of the water has been mixed. Mix no longer than required to provide a uniform mixture. DO NOT OVER-MIX. Overmixing entrains excessive amounts of air which weaken the material. Do not re-temper mixes over 20 minutes old.

3.4 APPLICATION

- A. General: Stucco assembly and its related materials shall conform to the current Decoplast Stucco Application Guide.
- [B. Bonding Agent: Decoplast DecoPrep for use between cementitious coats.
 - 1. Apply at the rate of 250 sq. ft. per gallon using a low-pressure sprayer brush- or roller. (application in direct sunlight may cause the product to dry too quickly)
 - 2. Stucco finishes or other cement products can still be applied after Bonding Agent becomes tacky up to 72 hours after application, but not while wet.
- C. Stucco Base:
 - 1. Either DECOWALL FRS Stucco mixtures shall be applied in one or two coats to a minimum thickness of 3/8 in (9.5 mm) per coat by hand troweling or machine spraying the mixture to the wire lath in accordance with manufacturer's product data sheets and application guidelines. The maximum thickness applied in one pass is 1/2 in (17 mm).
 - 2. Rod surface to true plane and float to densify.
 - 3. Trowel to smooth and uniform surface to receive acrylic or elastomeric finish coat.

EDITOR NOTE: MODIFY BELOW TO SUIT REQUIREMENTS. CHOOSE LEVELING AND REINFORCING COAT (D.) FOR ENHANCED CRACK RESISTANCE.

- [D. Leveling and Reinforcing Coat:
 - 1. After Moist Curing, allow stucco base coat to air dry a minimum of 24 hours before applying the leveling and reinforcing coat.
 - 2. Using a stainless steel trowel, apply the stucco leveling coat over the stucco base coat at a thickness of 1/16 to 3/32 in (1.6 – 2.4 mm).
 - 3. Fully embed reinforcing mesh, either Stucco Mesh, Standard Mesh or Intermediate Mesh, into wet stucco level coat, including diagonal strips at corners of openings and trowel smooth. If Stucco Mesh or Standard Mesh is used, seams are overlapped 2-1/2 in (63 mm); if Intermediate Mesh is used, seams are butted and covered by strips of Detail Mesh.
 - 4. The acrylic primers and finishes can be applied as soon as the stucco leveling coat has dried, typically within 24 hours.
- [E. Expanded Polystyrene Featured over Stucco Base Coat:
 - 1. Install back-wrap mesh at EPS terminations.
 - 2. Apply adhesive to backs of insulation boards with a notched trowel. Allow to dry a minimum of 12 hours.
 - 3. Apply base coat material to the entire foam shape and pull the backwrap mesh around the foam shapes and fully embed it into the base coat.
 - 4. Immediately embed the reinforcing mesh in the wet base coat.
- F. Primer and Finish:
 - 1. Remove surface contaminants such as dust or dirt without damaging the substrate.
 - 2. Ambient and surface temperature must be 40°F (4°C) or higher during application and drying

time. Supplemental heat and protection from precipitation must be provided as needed.

3. Use only on surfaces that are sound, clean, dry, unpainted, and free from any residue that might affect the ability of the finish to bond to the surface.

EDITOR NOTE: MODIFY BELOW TO SUIT REQUIREMENTS. CHOOSE ONE #4 OR #5.

- [4. Decoplast Decowall FRS Stucco Assembly with Crack Lamina Design
 - a. Before the application of the finish, the base coat must have cured a minimum of 24 hours or longer as required by conditions. Examine the cured base coat for any irregularities.
 - b. Correct these irregularities to produce a flat surface.

-OR-

- [5. Decoplast Decowall FRS Stucco Assembly:
 - a. After moist curing, allow the stucco base to air dry in accordance with Stucco Application Guide depending on type of finish coat and primer.
6. Apply primer as directed in manufacturer's product data sheet and application guide.
7. Apply exterior wall finish in number of coats thickness recommended by manufacturer to achieve texture indicated, using sufficient trowel pressure or spray velocity to bond finish to base coat.
8. Protect finish coats from inclement weather until completely dry.

G. Curing:

1. Keep stucco base coat moist for at least 48 hours (longer in dry weather) by lightly fogging walls. Start light fogging after initial set of 1–2 hours.
2. Air dry acrylic based and elastomeric finish coats only, do not wet cure.

3.5 CLEAN-UP

- A. Removal: Remove and legally dispose of stucco component debris material from job site.

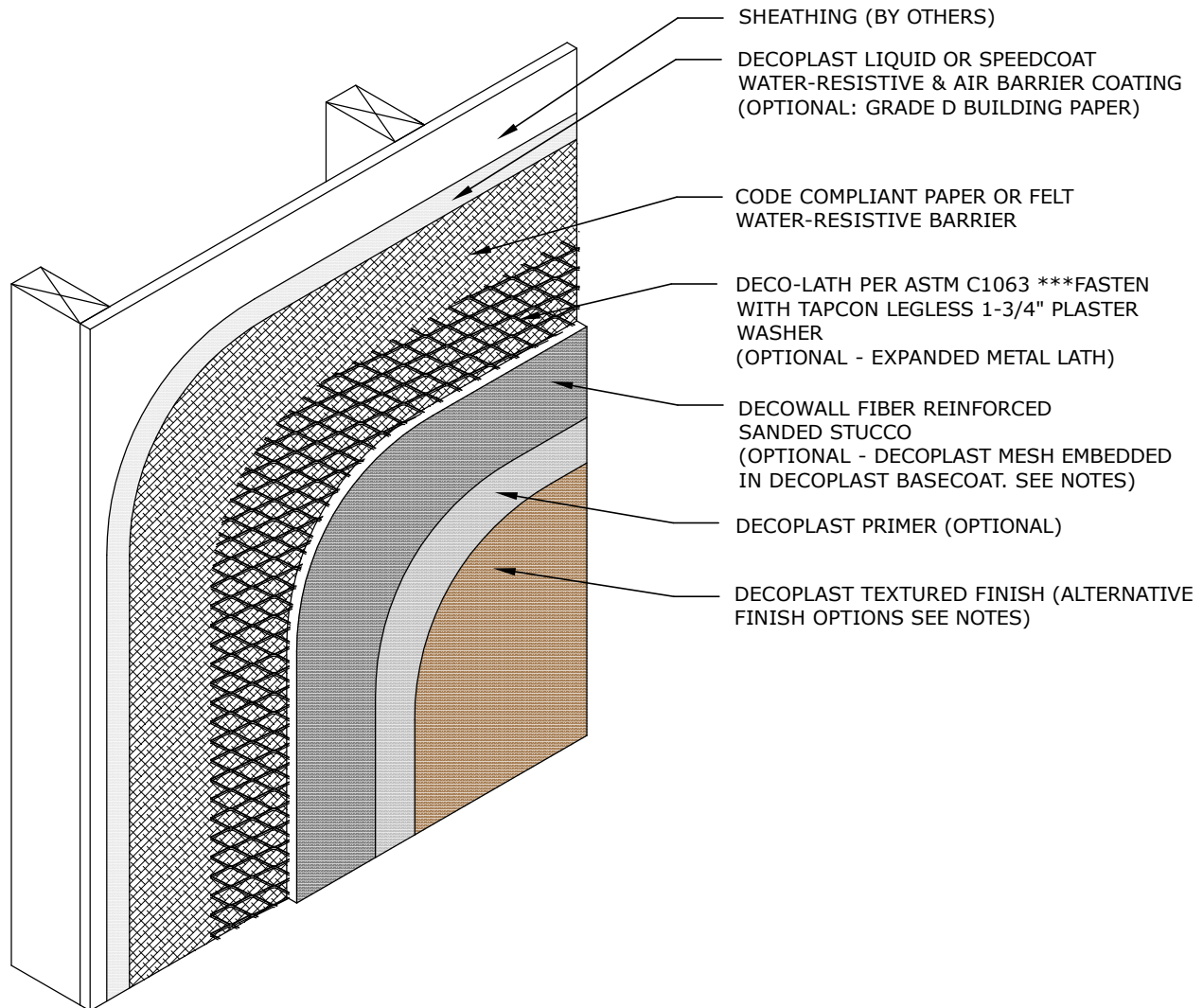
3.6 PROTECTION

- A. Provide protection of installed materials from water infiltration into or behind them.
- B. Provide protection of installed stucco from dust, dirt, precipitation, and freezing during installation.
- C. Provide protection of installed finish from dust, dirt, precipitation, freezing, and continuous high humidity until fully dry.
- D. Clean exposed surfaces using materials and methods recommended by the manufacturer of the material or product being cleaned. Remove and replace work that cannot be cleaned to the satisfaction of the Designer/Owner.

END OF SECTION

Rev. Dec. 2015

Disclaimer: This guide specification is intended for use by a qualified designer. The guide specification is not intended to be used verbatim as an actual specification without appropriate modifications for the specific use intended. The guide specification must be integrated into and coordinated with the procedures of each design firm, and the requirements of a specific project. For additional assistance, contact DECOPLAST Technical Support (860.761.2830).



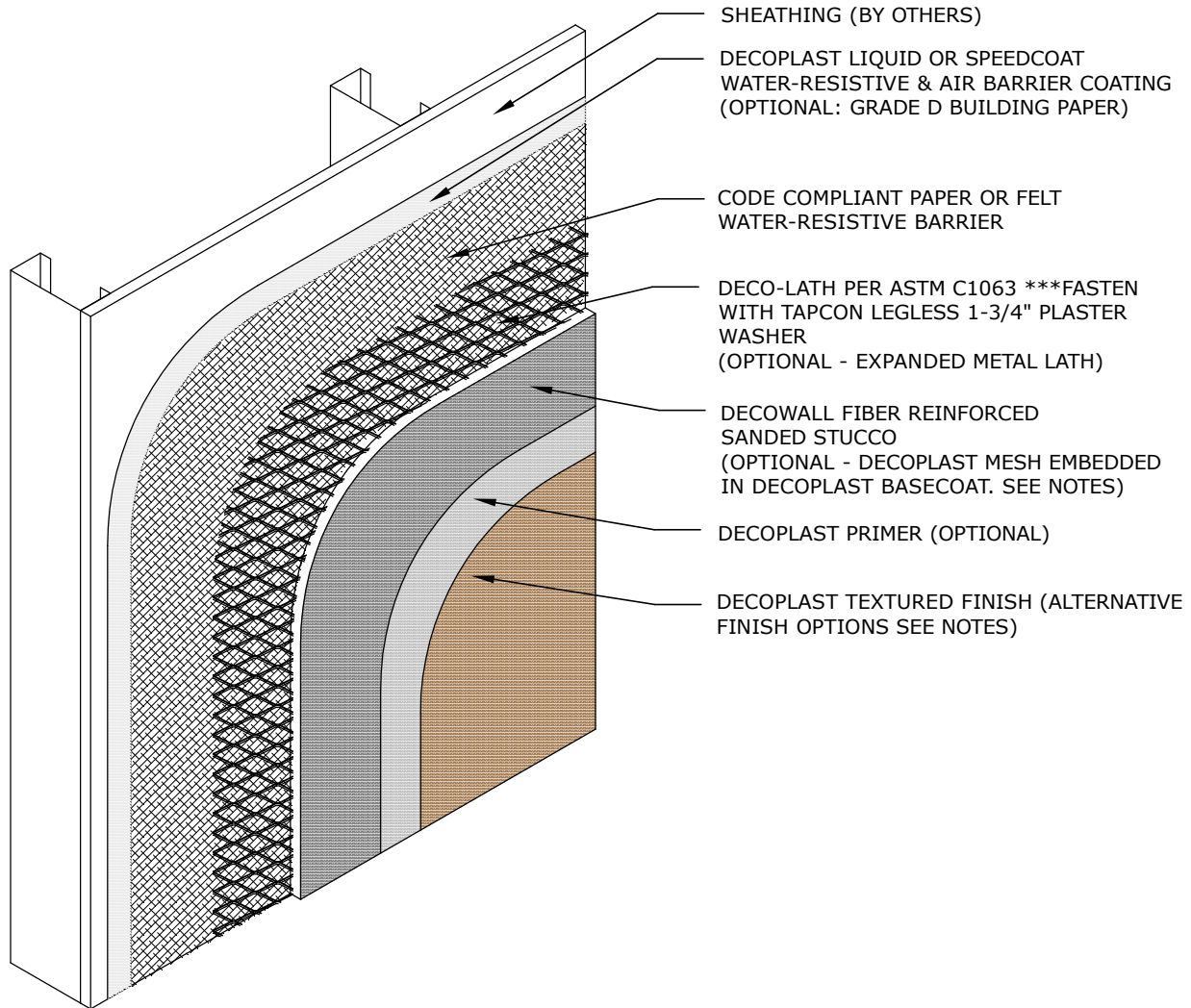
DG1.01 DECOWALL FRS STUCCO ASSEMBLY / WOOD FRAME

DECOPLAST DECOWALL FRS - 6/1/2016

NOTE:

1. Stucco Claddings and any cladding using a mortar bed requires the use of a slipsheet installed over the Water-Resistive & Air Barrier Coating to prevent adhesion of the stucco.
2. Refer to Decoplast specifications specified basecoat product & thickness
3. Optional Decoplast Mesh embedded in Decoplast Basecoat may be applied over DECOWALL Fiber Reinforced Sanded Stucco to help bridge spidering.
4. Optional textured finishes: Decolastic, Deco250 and DecoSil.

Disclaimer: The design, specifications, and construction shall comply with all local building codes and standards. Decoplast installation guidelines are for general information and guidance only and Decoplast specifically disclaims any liability for the use of this design, and for design, engineering, or workmanship of any project. The assembly shall be designed to prevent condensation within the assembly. The designer and the user shall provide final drawings and specifications. Products shown other than those manufactured by Decoplast are shown for clarity of the Decoplast product only. Contact the manufacturer of such other products for installation instructions.



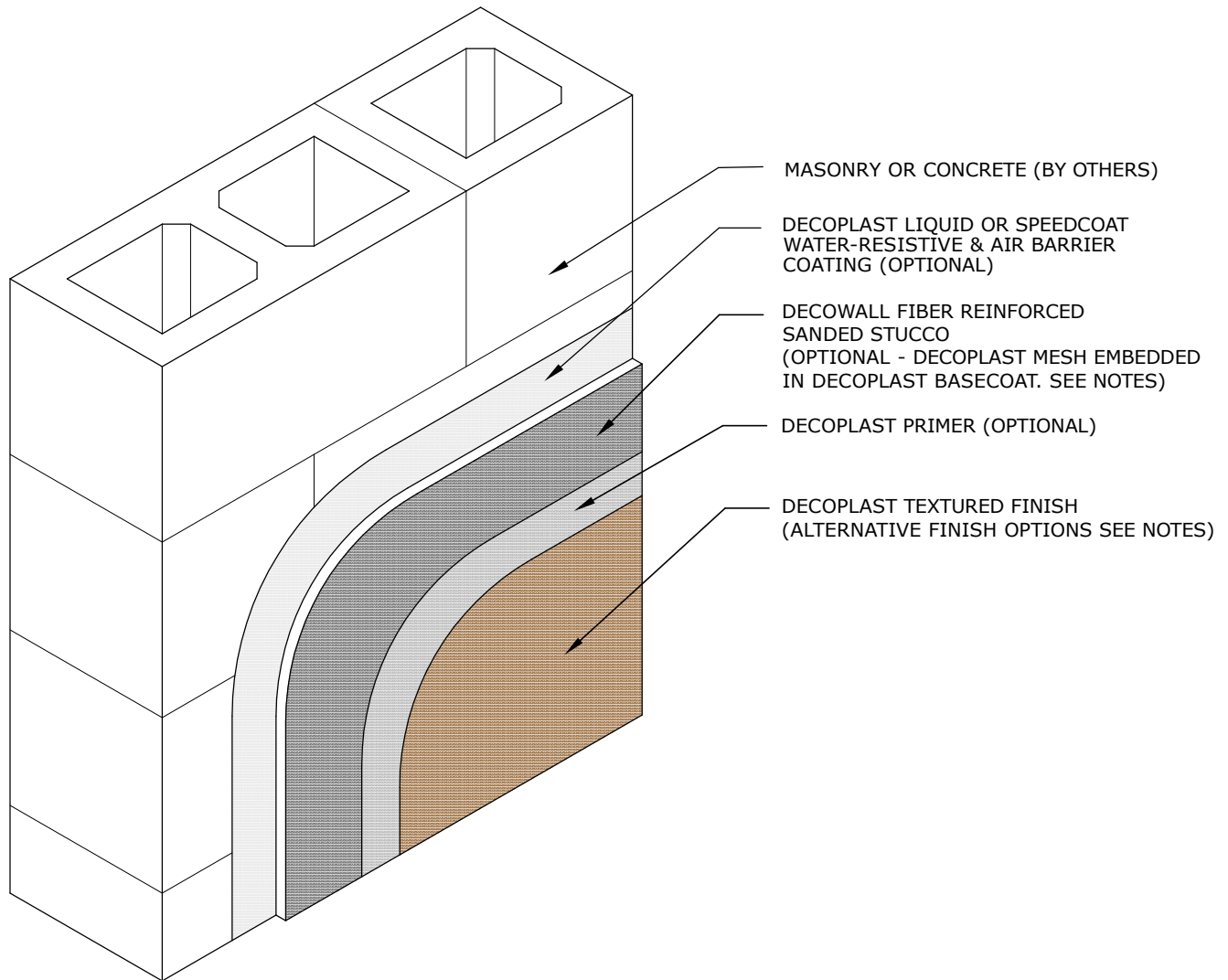
DG1.06 DECOWALL FRS ASSEMBLY / STEEL FRAME

DECOPLAST DECOWALL FRS - 6/1/2016

NOTE:

1. Stucco Claddings and any cladding using a mortar bed requires the use of a slipsheet installed over the Water-Resistive & Air Barrier Coating to prevent adhesion of the stucco.
2. Refer to Decoplast specifications specified basecoat product & thickness
3. Optional Decoplast Mesh embedded in Decoplast Basecoat may be applied over DECOWALL Fiber Reinforced Sanded Stucco to help bridge spidering.
4. Optional textured finishes: Decolastic, Deco250 and DecoSil.

Disclaimer: The design, specifications, and construction shall comply with all local building codes and standards. Decoplast installation guidelines are for general information and guidance only and Decoplast specifically disclaims any liability for the use of this design, and for design, engineering, or workmanship of any project. The assembly shall be designed to prevent condensation within the assembly. The designer and the user shall provide final drawings and specifications. Products shown other than those manufactured by Decoplast are shown for clarity of the Decoplast product only. Contact the manufacturer of such other products for installation instructions.



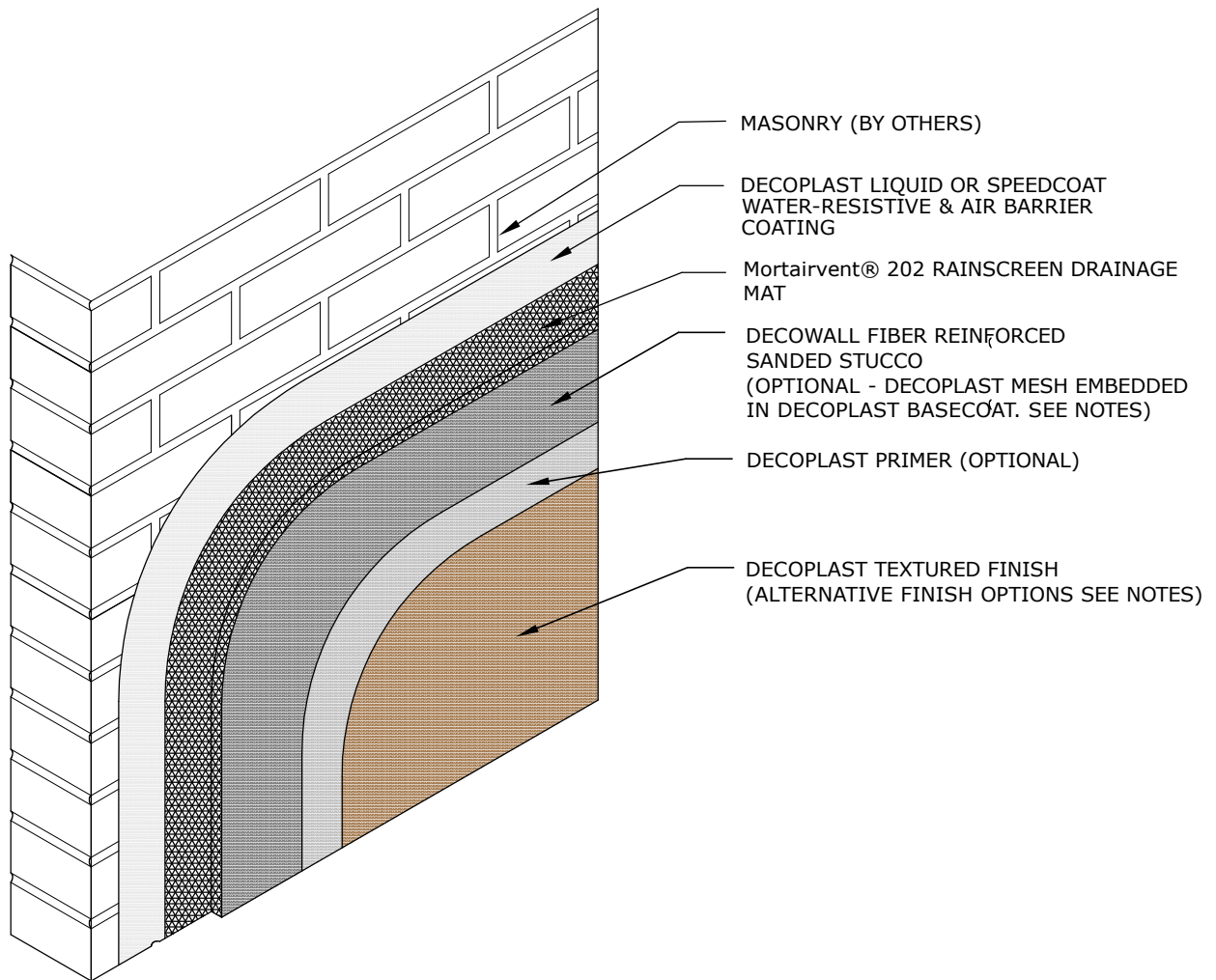
DG1.10A DECOWALL FRS ASSEMBLY / CMU

DECOPLAST DECOWALL FRS - 6/1/2016

NOTE:

1. Refer to Decoplast specifications specified basecoat product & thickness
2. Optional Decoplast Mesh embedded in Decoplast Basecoat may be applied over DECOWALL Fiber Reinforced Sanded Stucco to help bridge spidering.
3. Optional textured finishes: Decolastic, Deco250 and DecoSil.

Disclaimer: The design, specifications, and construction shall comply with all local building codes and standards. Decoplast installation guidelines are for general information and guidance only and Decoplast specifically disclaims any liability for the use of this design, and for design, engineering, or workmanship of any project. The assembly shall be designed to prevent condensation within the assembly. The designer and the user shall provide final drawings and specifications. Products shown other than those manufactured by Decoplast are shown for clarity of the Decoplast product only. Contact the manufacturer of such other products for installation instructions.



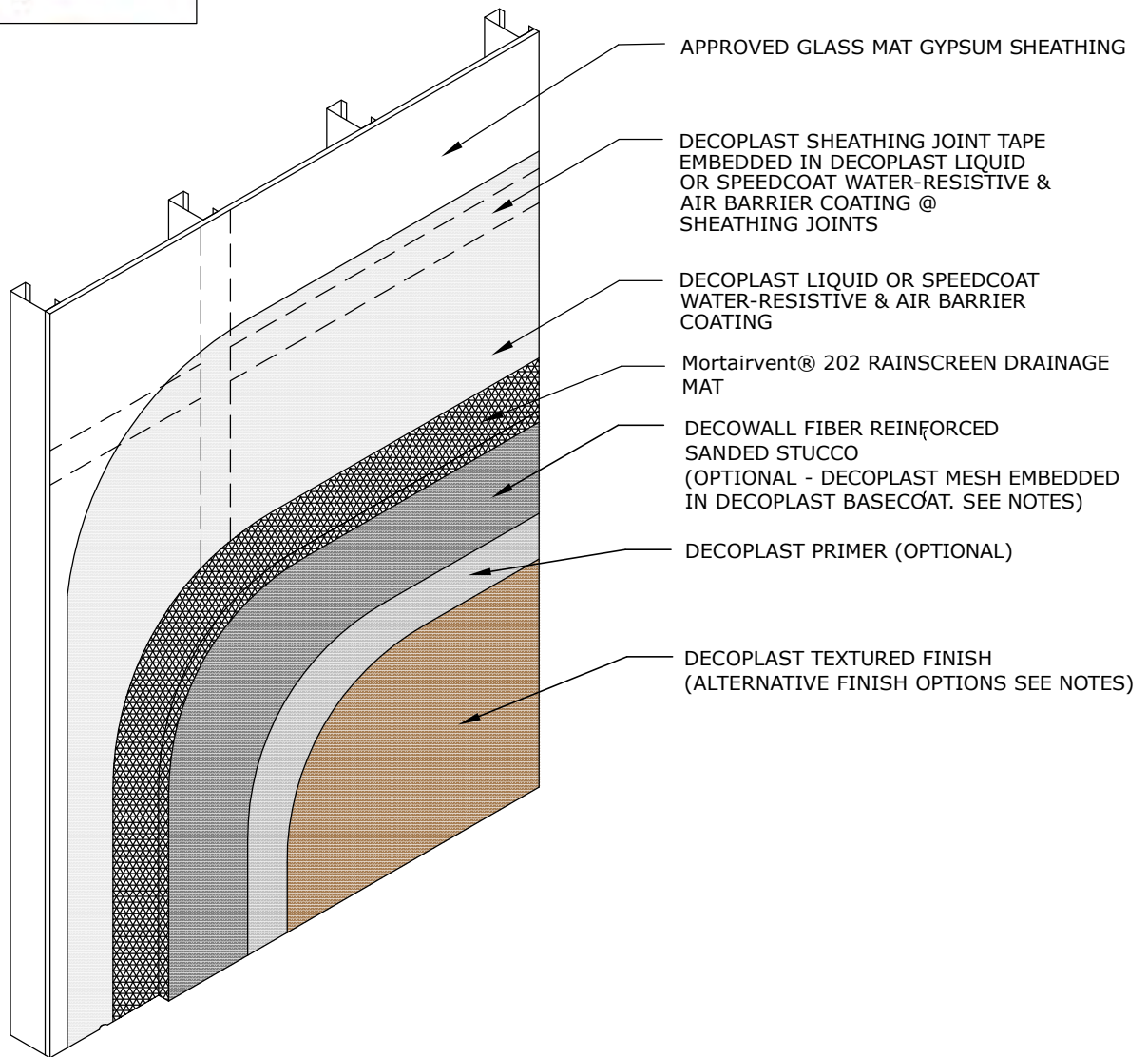
DG1.10B DECOWALL FRS ASSEMBLY / BRICK MASONRY WITH DRAINAGE MAT

DECOPLAST DECOWALL FRS - 6/1/2016

NOTE:

1. Refer to Decoplast specifications specified basecoat product & thickness
2. Optional Decoplast Mesh embedded in Decoplast Basecoat may be applied over DECOWALL Fiber Reinforced Sanded Stucco to help bridge spidering.
3. Optional textured finishes: Decolastic, Deco250 and DecoSil.

Disclaimer: The design, specifications, and construction shall comply with all local building codes and standards. Decoplast installation guidelines are for general information and guidance only and Decoplast specifically disclaims any liability for the use of this design, and for design, engineering, or workmanship of any project. The assembly shall be designed to prevent condensation within the assembly. The designer and the user shall provide final drawings and specifications. Products shown other than those manufactured by Decoplast are shown for clarity of the Decoplast product only. Contact the manufacturer of such other products for installation instructions.



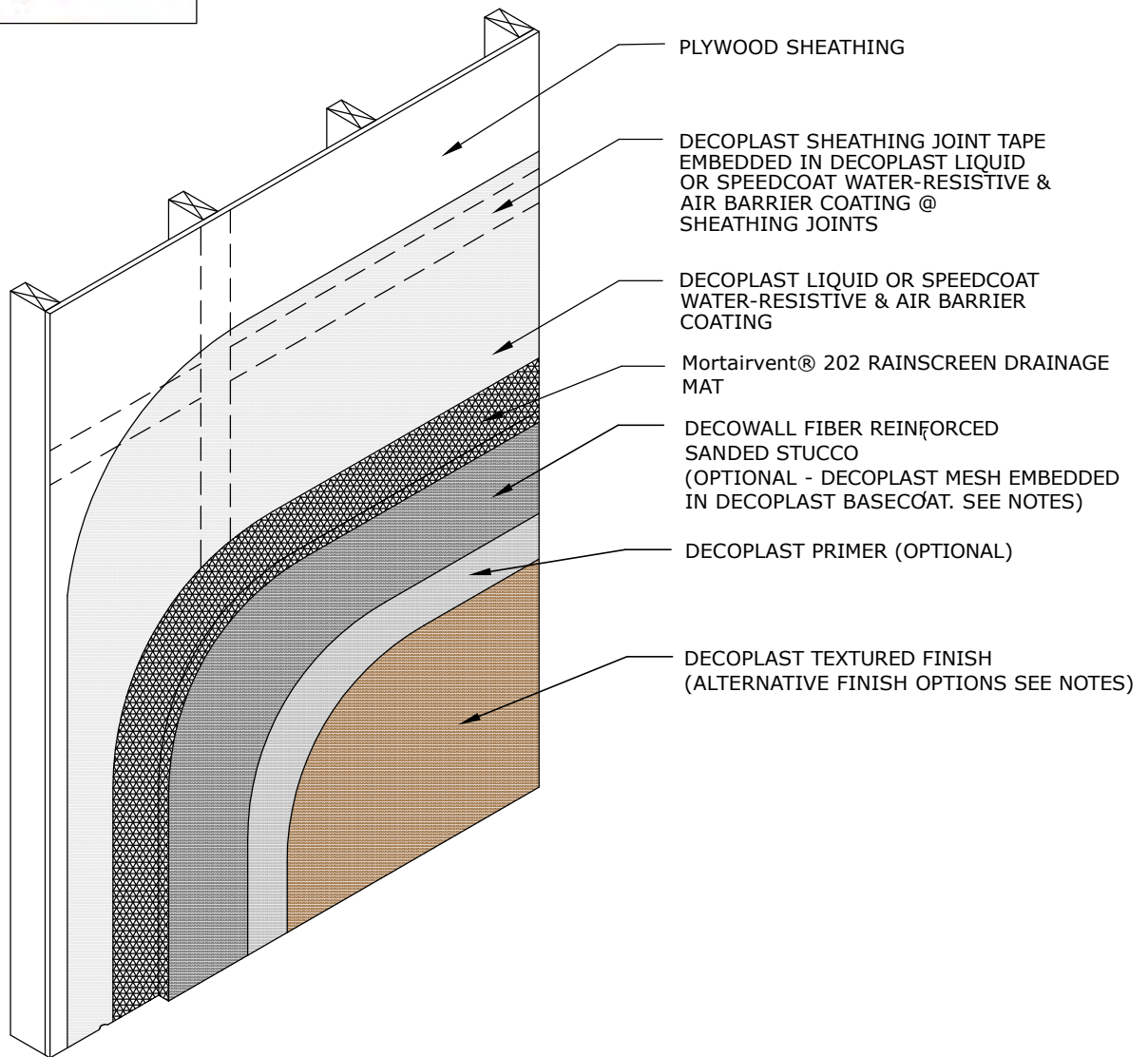
DG1.10C DECOWALL FRS ASSEMBLY / STEEL STUD - GLASS MAT GYPSUM SHEATHING WITH DRAINAGE MAT

DECOPLAST DECOWALL FRS - 6/1/2016

NOTE:

1. Refer to Decoplast specifications specified basecoat product & thickness
2. Optional Decoplast Mesh embedded in Decoplast Basecoat may be applied over DECOWALL Fiber Reinforced Sanded Stucco to help bridge spidering.
3. Optional textured finishes: Decolastic, Deco250 and DecoSil.

Disclaimer: The design, specifications, and construction shall comply with all local building codes and standards. Decoplast installation guidelines are for general information and guidance only and Decoplast specifically disclaims any liability for the use of this design, and for design, engineering, or workmanship of any project. The assembly shall be designed to prevent condensation within the assembly. The designer and the user shall provide final drawings and specifications. Products shown other than those manufactured by Decoplast are shown for clarity of the Decoplast product only. Contact the manufacturer of such other products for installation instructions.



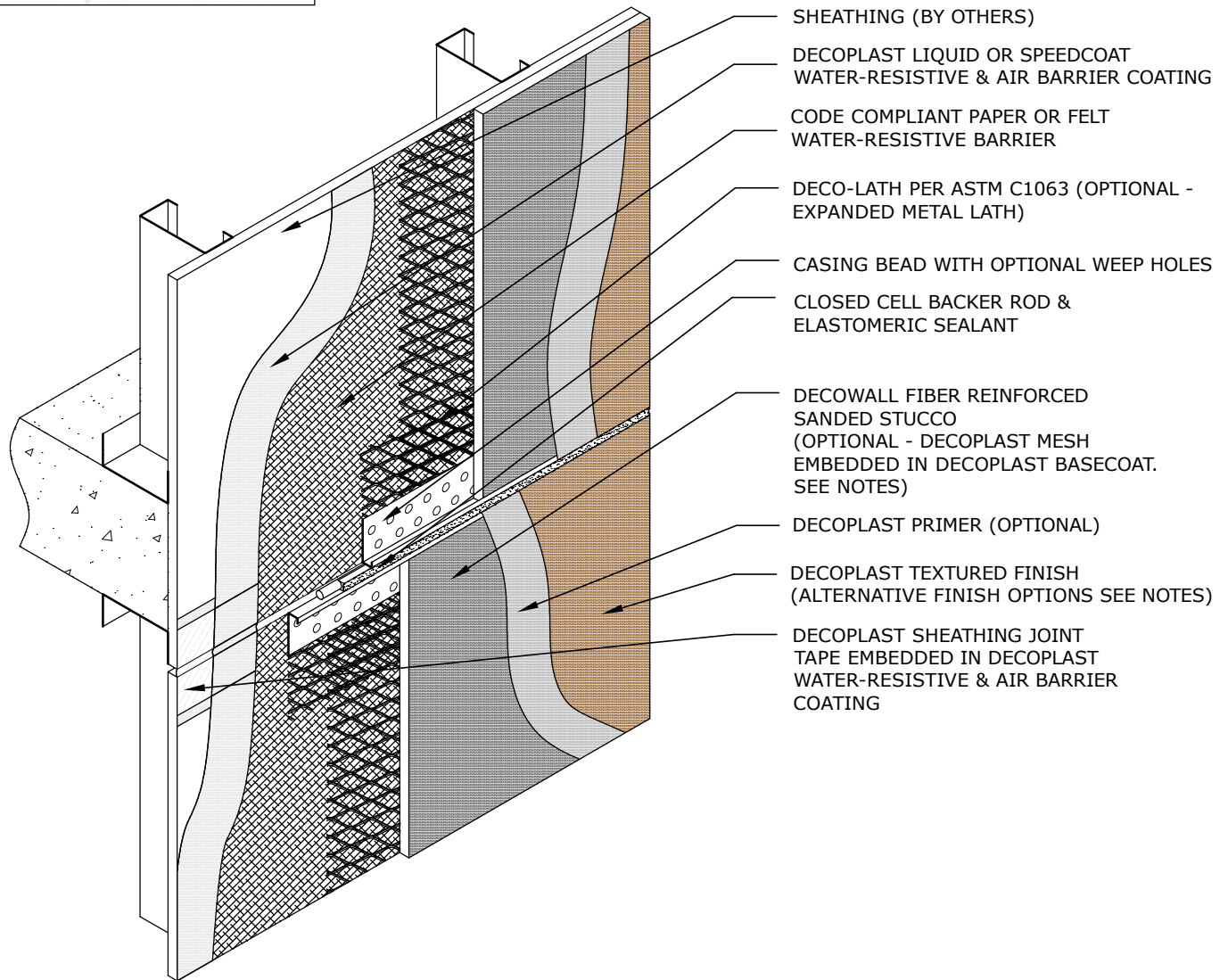
DG1.10D DECOWALL FRS ASSEMBLY / WOOD FRAME - SHEATHING WITH DRAINAGE MAT

DECOPLAST DECOWALL FRS - 6/1/2016

NOTE:

1. Refer to Decoplast specifications specified basecoat product & thickness
2. Optional Decoplast Mesh embedded in Decoplast Basecoat may be applied over DECOWALL Fiber Reinforced Sanded Stucco to help bridge spidering.
3. Optional textured finishes: Decolastic, Deco250 and DecoSil.

Disclaimer: The design, specifications, and construction shall comply with all local building codes and standards. Decoplast installation guidelines are for general information and guidance only and Decoplast specifically disclaims any liability for the use of this design, and for design, engineering, or workmanship of any project. The assembly shall be designed to prevent condensation within the assembly. The designer and the user shall provide final drawings and specifications. Products shown other than those manufactured by Decoplast are shown for clarity of the Decoplast product only. Contact the manufacturer of such other products for installation instructions.



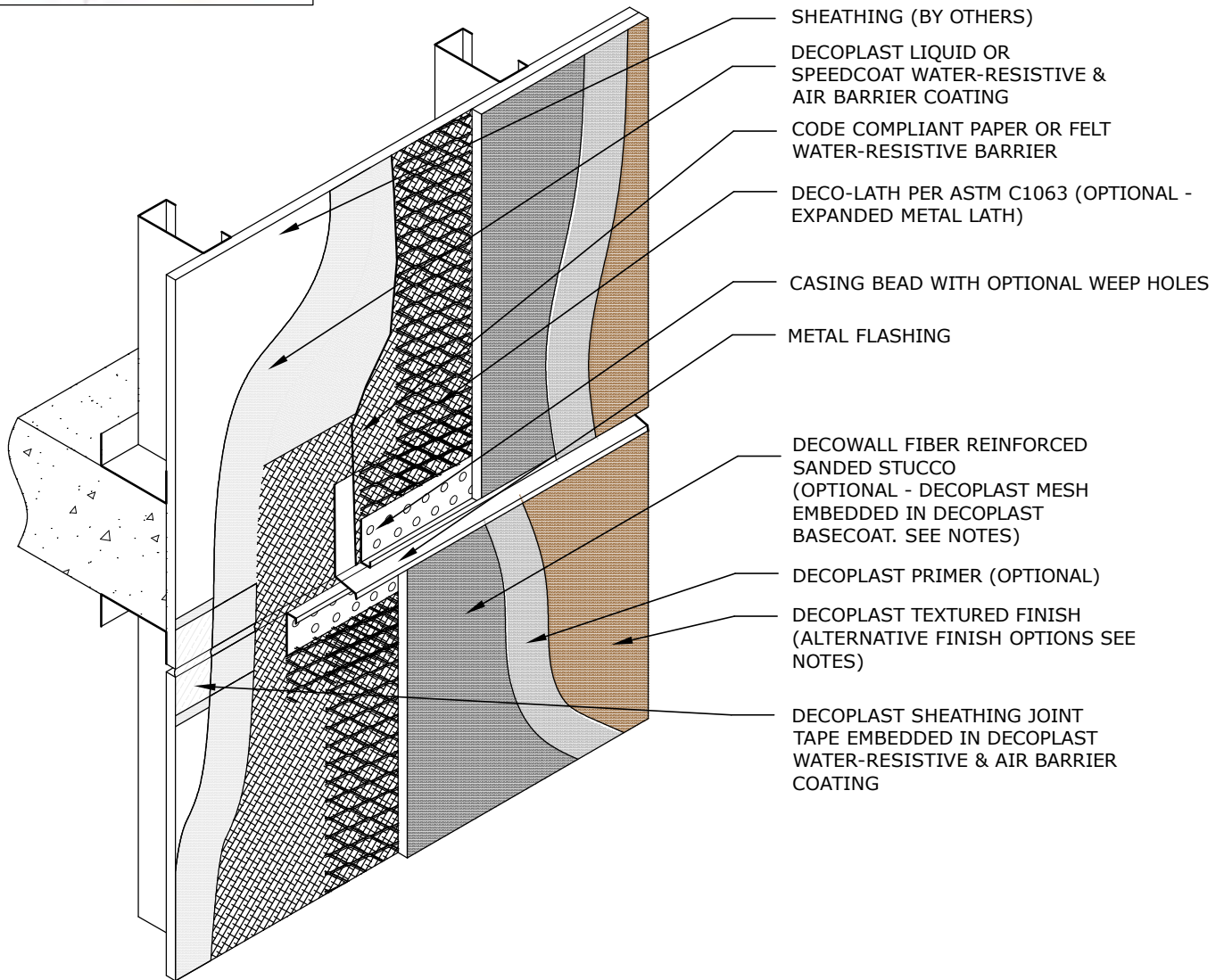
DE1.01A DECOWALL FRS EXPANSION JOINT

DECOPLAST DECOWALL FRS 6/1/2016

NOTE:

1. To ensure a continuous air barrier across the building envelope, a continuous air seal should be made at each substrate change, joints/gaps, penetrations and dissimilar material terminations. There must be consideration of the Designer in the overall wall assembly design.
2. Stucco Claddings and any cladding using a mortar bed requires the use of a slipsheet installed over the Water-Resistive & Air Barrier Coating to prevent adhesion of the stucco.
3. Refer to Decoplast specifications specified basecoat product & thickness
4. Optional Decoplast Mesh embedded in Decoplast Basecoat may be applied over DECOWALL Fiber Reinforced Sanded Stucco to help bridge spidering.
5. Optional textured finishes: Decolastic, Deco250 and DecoSil.

Disclaimer: The design, specifications, and construction shall comply with all local building codes and standards. Decoplast installation guidelines are for general information and guidance only and Decoplast specifically disclaims any liability for the use of this design, and for design, engineering, or workmanship of any project. The assembly shall be designed to prevent condensation within the assembly. The designer and the user shall provide final drawings and specifications. Products shown other than those manufactured by Decoplast are shown for clarity of the Decoplast product only. Contact the manufacturer of such other products for installation instructions.



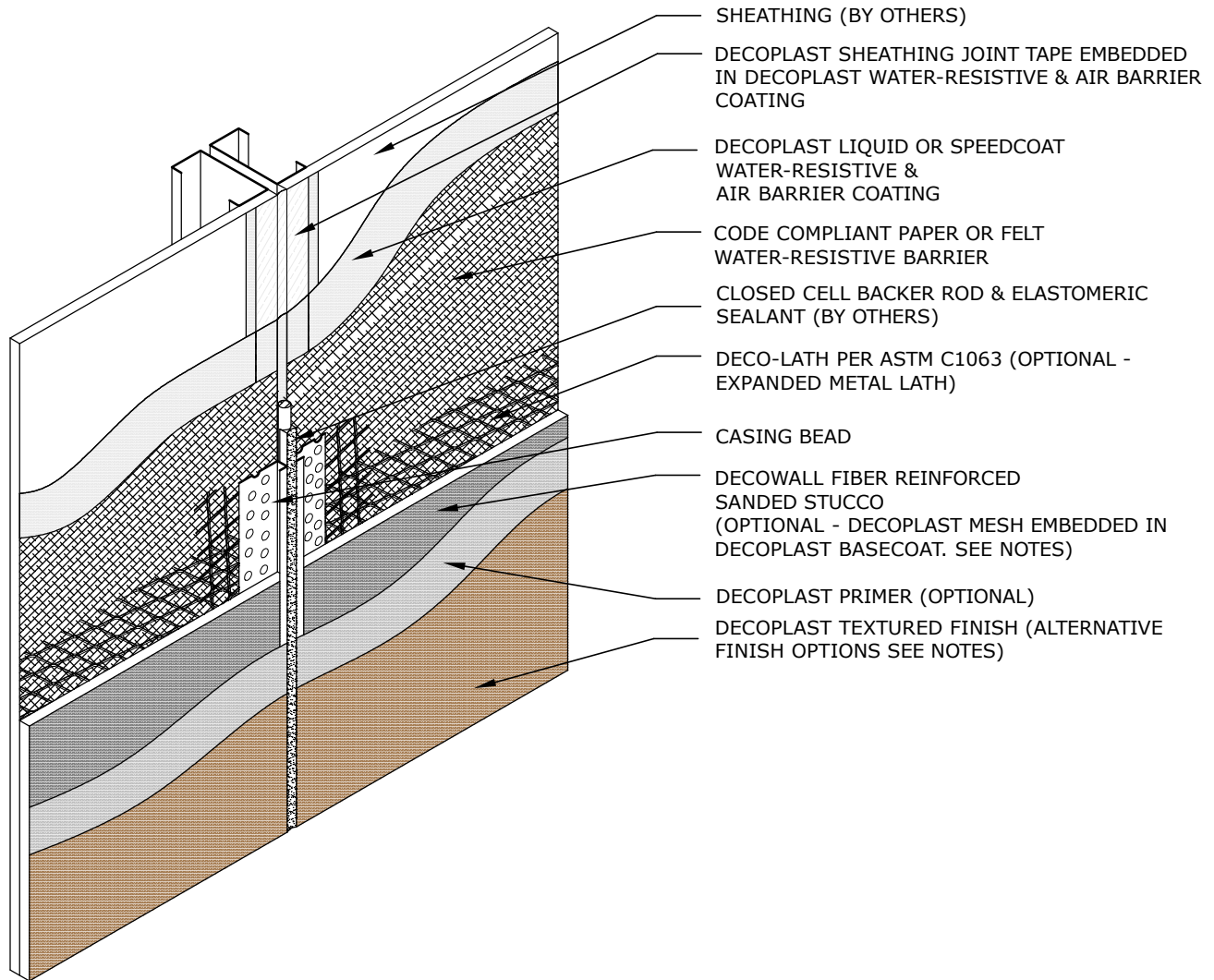
DE1.01B DECOWALL FRS EXPANSION JOINT WITH FLASHING

DECOPLAST DECOWALL FRS - 6/1/2016

NOTE:

1. To ensure a continuous air barrier across the building envelope, a continuous air seal should be made at each substrate change, joints/gaps, penetrations and dissimilar material terminations. There must be consideration of the Designer in the overall wall assembly design.
2. Stucco Claddings and any cladding using a mortar bed requires the use of a slipsheet installed over the Water-Resistive & Air Barrier Coating to prevent adhesion of the stucco.
3. Refer to Decoplast specifications specified basecoat product & thickness
4. Optional Decoplast Mesh embedded in Decoplast Basecoat may be applied over DECOWALL Fiber Reinforced Sanded Stucco to help bridge spidering.
5. Optional textured finishes: Decolastic, Deco250 and DecoSil.

Disclaimer: The design, specifications, and construction shall comply with all local building codes and standards. Decoplast installation guidelines are for general information and guidance only and Decoplast specifically disclaims any liability for the use of this design, and for design, engineering, or workmanship of any project. The assembly shall be designed to prevent condensation within the assembly. The designer and the user shall provide final drawings and specifications. Products shown other than those manufactured by Decoplast are shown for clarity of the Decoplast product only. Contact the manufacturer of such other products for installation instructions.



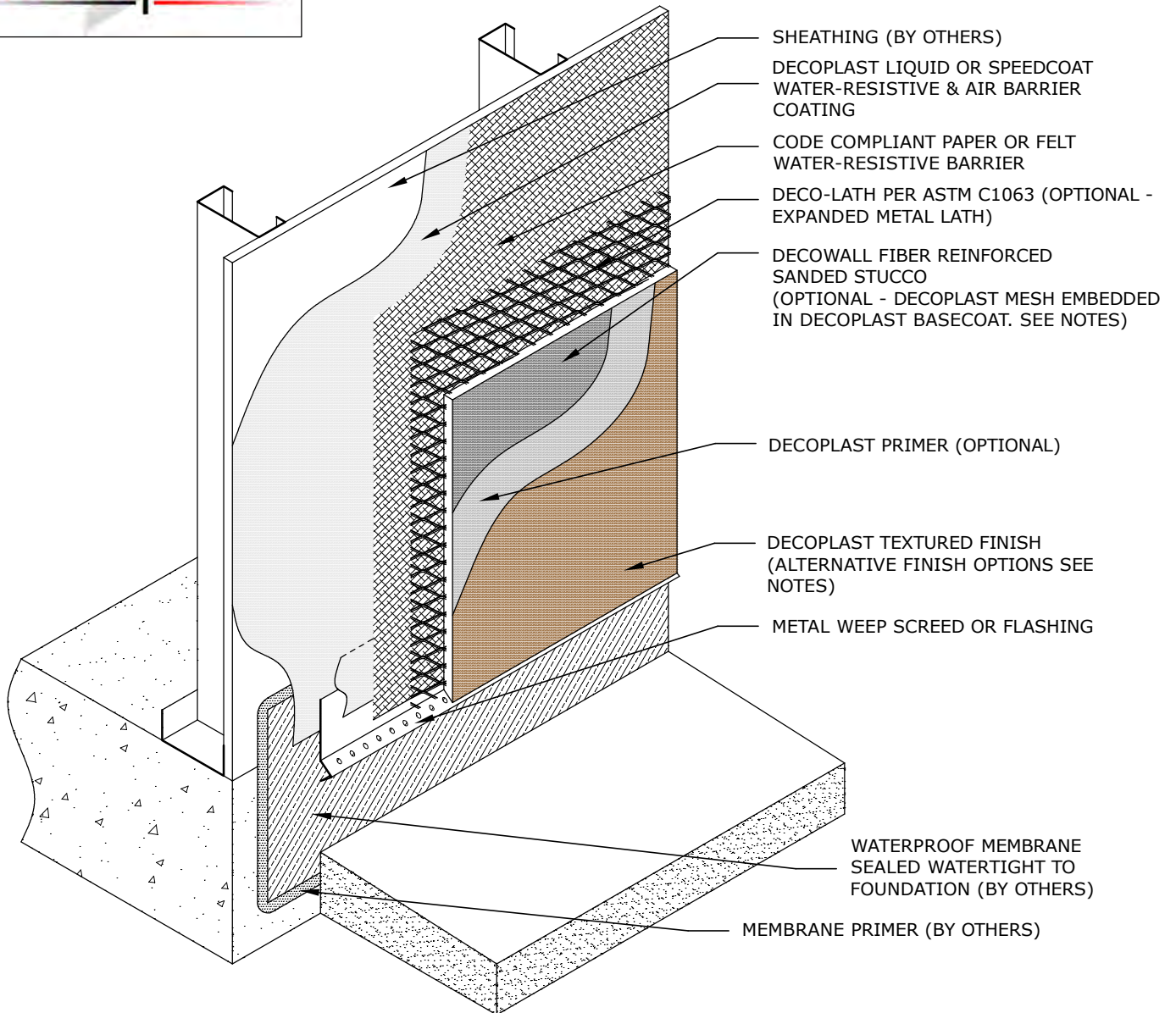
DE1.03 DECOWALL FRS CASING BEAD TERMINATION

DECOPLAST DECOWALL FRS - 6/1/2016

NOTE:

1. To ensure a continuous air barrier across the building envelope, a continuous air seal should be made at each substrate change, joints/gaps, penetrations and dissimilar material terminations. There must be consideration of the Designer in the overall wall assembly design.
2. Stucco Claddings and any cladding using a mortar bed requires the use of a slipsheet installed over the Water-Resistive & Air Barrier Coating to prevent adhesion of the stucco.
3. Refer to Decoplast specifications specified basecoat product & thickness
4. Optional Decoplast Mesh embedded in Decoplast Basecoat may be applied over DECOWALL Fiber Reinforced Sanded Stucco to help bridge spidering.
5. Optional textured finishes: Decolastic, Deco250 and DecoSil.

Disclaimer: The design, specifications, and construction shall comply with all local building codes and standards. Decoplast installation guidelines are for general information and guidance only and Decoplast specifically disclaims any liability for the use of this design, and for design, engineering, or workmanship of any project. The assembly shall be designed to prevent condensation within the assembly. The designer and the user shall provide final drawings and specifications. Products shown other than those manufactured by Decoplast are shown for clarity of the Decoplast product only. Contact the manufacturer of such other products for installation instructions.



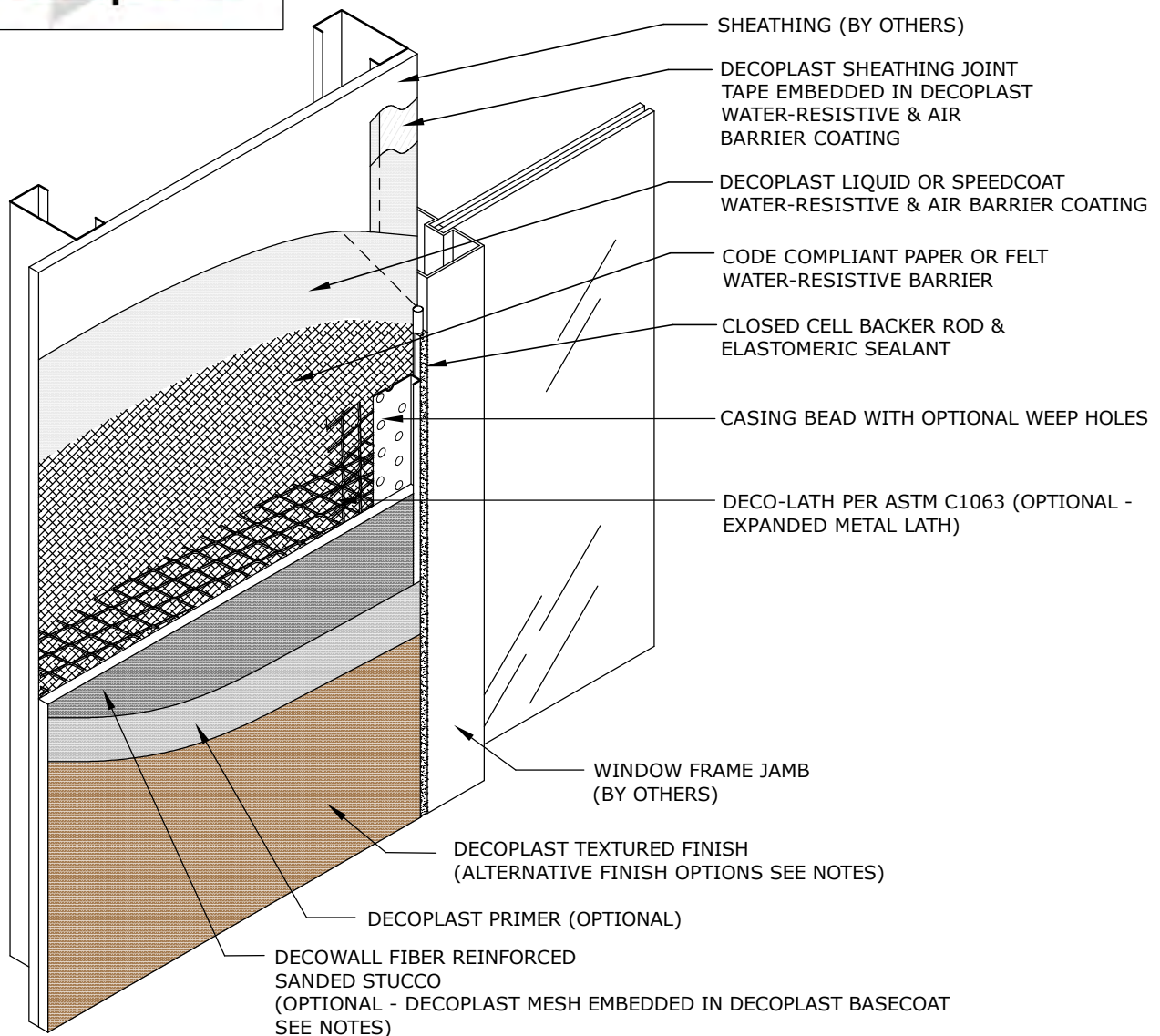
DT1.01 DECOWALL FRS TERMINATION AT GRADE

DECOPLAST DECOWALL FRS - 6/1/2016

NOTE:

1. To ensure a continuous air barrier across the building envelope, a continuous air seal should be made at each substrate change, joints/gaps, penetrations and dissimilar material terminations. There must be consideration of the Designer in the overall wall assembly design.
2. Stucco Claddings and any cladding using a mortar bed requires the use of a slipsheet installed over the Water-Resistive & Air Barrier Coating to prevent adhesion of the stucco.
3. Refer to Decoplast specifications specified basecoat product & thickness
4. Optional Decoplast Mesh embedded in Decoplast Basecoat may be applied over DECOWALL Fiber Reinforced Sanded Stucco to help bridge spidering.
5. Optional textured finishes: Decolastic, Deco250 and DecoSil.

Disclaimer: The design, specifications, and construction shall comply with all local building codes and standards. Decoplast installation guidelines are for general information and guidance only and Decoplast specifically disclaims any liability for the use of this design, and for design, engineering, or workmanship of any project. The assembly shall be designed to prevent condensation within the assembly. The designer and the user shall provide final drawings and specifications. Products shown other than those manufactured by Decoplast are shown for clarity of the Decoplast product only. Contact the manufacturer of such other products for installation instructions.



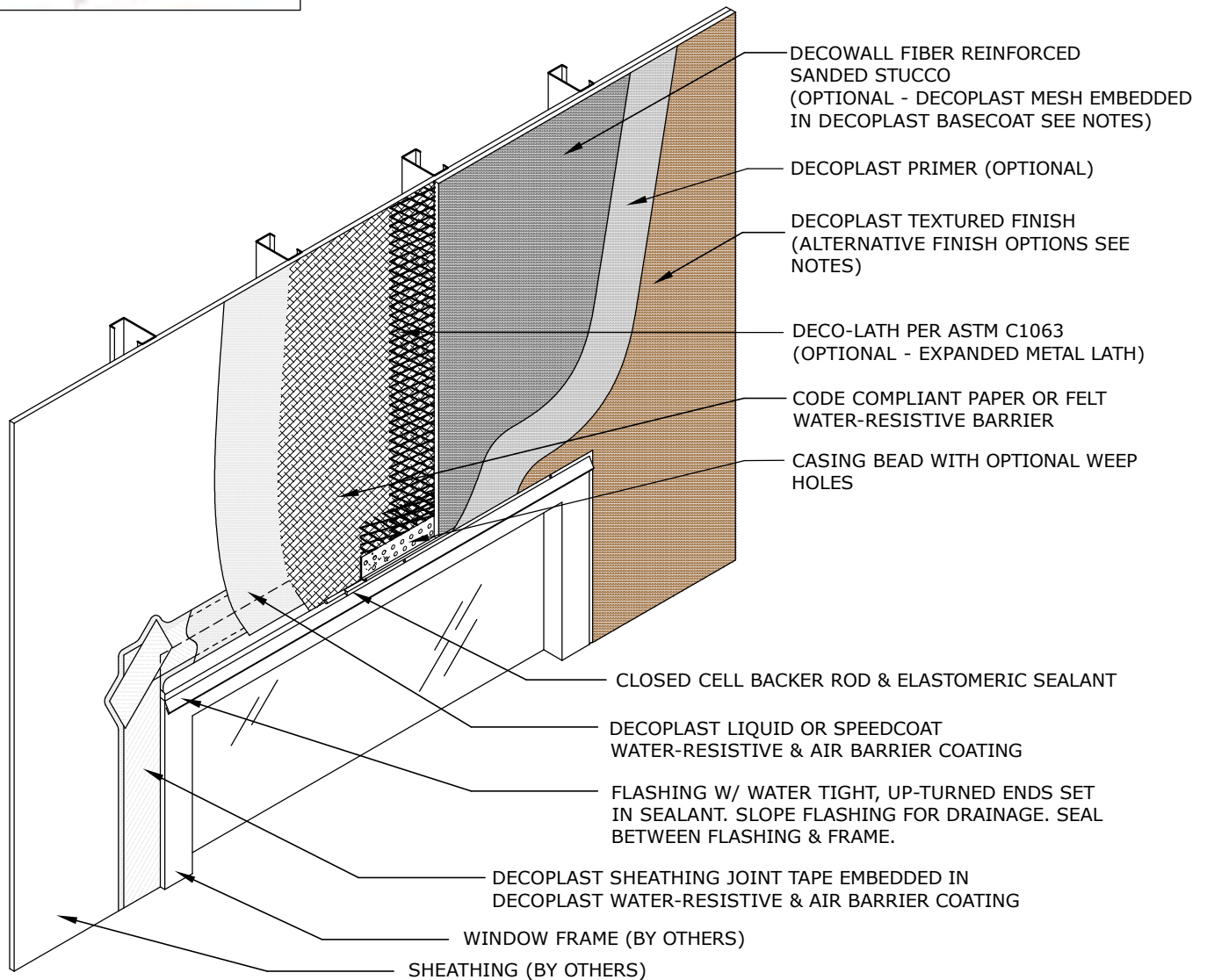
DW1.01 DECOWALL FRS TERMINATION AT WINDOW JAMB

DECOPLAST DECOWALL FRS - 6/1/2016

NOTE:

1. To ensure a continuous air barrier across the building envelope, a continuous air seal should be made at each substrate change, joints/gaps, penetrations and dissimilar material terminations. There must be consideration of the Designer in the overall wall assembly design.
2. Stucco Claddings and any cladding using a mortar bed requires the use of a slipsheet installed over the Water-Resistive & Air Barrier Coating to prevent adhesion of the stucco.
3. Refer to Decoplast specifications specified basecoat product & thickness
4. Optional Decoplast Mesh embedded in Decoplast Basecoat may be applied over DECOWALL Fiber Reinforced Sanded Stucco to help bridge spidering.
5. Optional textured finishes: Decolastic, Deco250 and DecoSil.

Disclaimer: The design, specifications, and construction shall comply with all local building codes and standards. Decoplast installation guidelines are for general information and guidance only and Decoplast specifically disclaims any liability for the use of this design, and for design, engineering, or workmanship of any project. The assembly shall be designed to prevent condensation within the assembly. The designer and the user shall provide final drawings and specifications. Products shown other than those manufactured by Decoplast are shown for clarity of the Decoplast product only. Contact the manufacturer of such other products for installation instructions.



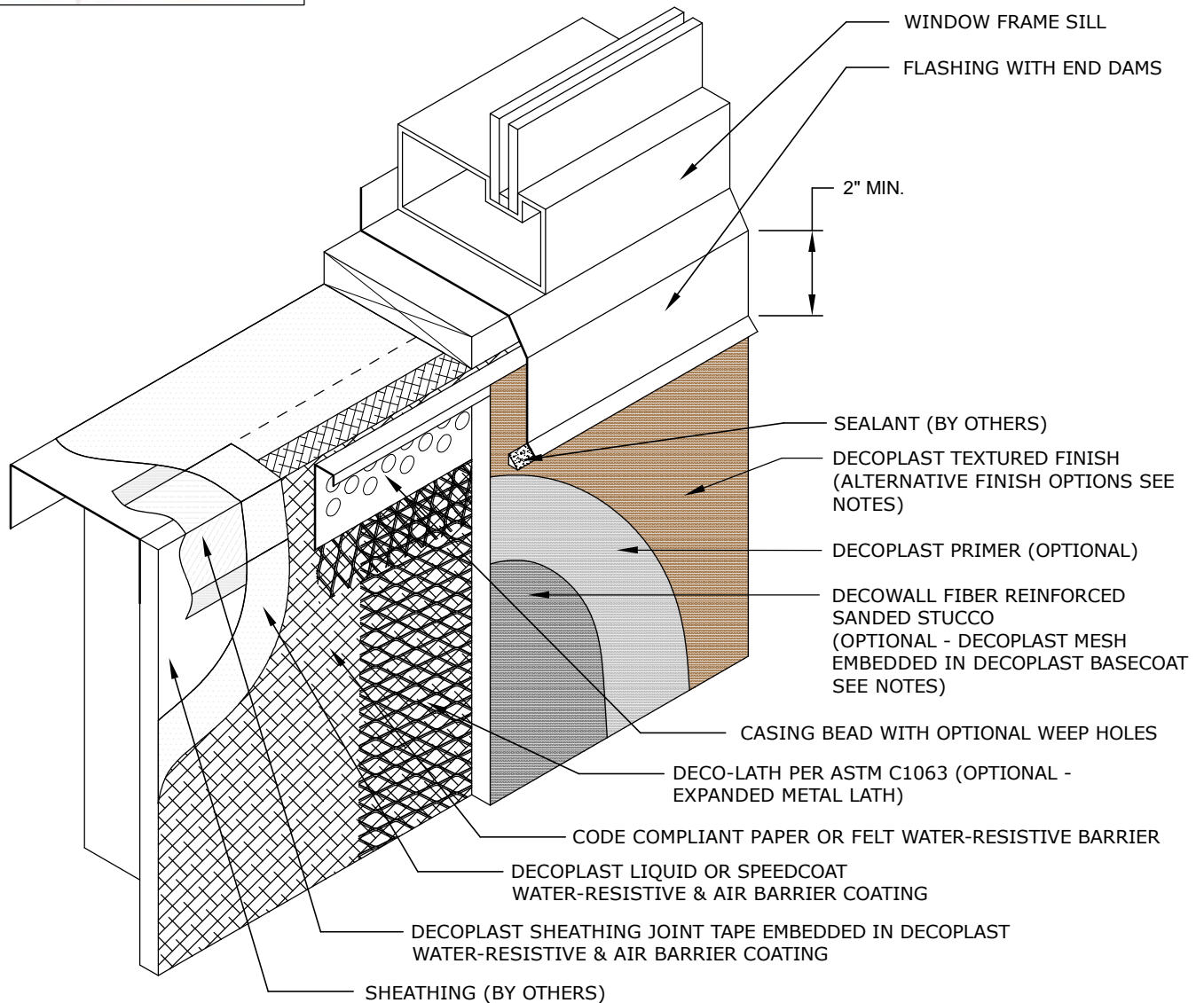
DW1.02 DECOWALL FRS TERMINATION AT WINDOW HEAD

DECOPLAST DECOWALL FRS - 6/1/2016

NOTE:

1. To ensure a continuous air barrier across the building envelope, a continuous air seal should be made at each substrate change, joints/gaps, penetrations and dissimilar material terminations. There must be consideration of the Designer in the overall wall assembly design.
2. Stucco Claddings and any cladding using a mortar bed requires the use of a slipsheet installed over the Water-Resistive & Air Barrier Coating to prevent adhesion of the stucco.
3. Refer to Decoplast specifications specified basecoat product & thickness
4. Optional Decoplast Mesh embedded in Decoplast Basecoat may be applied over DECOWALL Fiber Reinforced Sanded Stucco to help bridge spidering.
5. Optional textured finishes: Decolastic, Deco250 and DecoSil.

Disclaimer: The design, specifications, and construction shall comply with all local building codes and standards. Decoplast installation guidelines are for general information and guidance only and Decoplast specifically disclaims any liability for the use of this design, and for design, engineering, or workmanship of any project. The assembly shall be designed to prevent condensation within the assembly. The designer and the user shall provide final drawings and specifications. Products shown other than those manufactured by Decoplast are shown for clarity of the Decoplast product only. Contact the manufacturer of such other products for installation instructions.



DW1.03 DECOWALL FRS TERMINATION AT WINDOW SILL

DECOPLAST DECOWALL FRS - 6/1/2016

NOTE:

1. To ensure a continuous air barrier across the building envelope, a continuous air seal should be made at each substrate change, joints/gaps, penetrations and dissimilar material terminations. There must be consideration of the Designer in the overall wall assembly design.
2. Stucco Claddings and any cladding using a mortar bed requires the use of a slipsheet installed over the Water-Resistive & Air Barrier Coating to prevent adhesion of the stucco.
3. Refer to Decoplast specifications specified basecoat product & thickness
4. Optional Decoplast Mesh embedded in Decoplast Basecoat may be applied over DECOWALL Fiber Reinforced Sanded Stucco to help bridge spidering.
5. Optional textured finishes: Decolastic, Deco250 and DecoSil.

Disclaimer: The design, specifications, and construction shall comply with all local building codes and standards. Decoplast installation guidelines are for general information and guidance only and Decoplast specifically disclaims any liability for the use of this design, and for design, engineering, or workmanship of any project. The assembly shall be designed to prevent condensation within the assembly. The designer and the user shall provide final drawings and specifications. Products shown other than those manufactured by Decoplast are shown for clarity of the Decoplast product only. Contact the manufacturer of such other products for installation instructions.



Decoplast Liquid Weather Resistive Barrier

Decoplast Liquid Weather Resistive Barrier—Smooth

TECHNICAL DATA

REPORT	TEST METHOD	TEST CRITERIA	TEST RESULTS
Tensile Bond	ASTM E2568-09e1 ASTM C297/297M-04(2010)	Min. 15 psi (103kPa)	Substrate Minimum 20psi; 139 kPa Liquid Weather Barrier Flashing Minimum 70psi; 485 kPa
Water Resistance	ASTM E2568-09e1 ASTM D2247-11	14 Day exposure	Pass
Water Vapor Transmission	ASTM E2570 ASTM D2247-11	Vapor Permeable	Pass
Air Leakage	ASTM E283		.02 L/Min./m2
Water Penetration	ASTM E331	No water penetration beyond the inner most plane of the wall after 15 min @ 2.86psf	Pass
Air Permeance	ASTM E2178-11		<0.02 L/s/m ² @ 75Pa
Puncture Resistance	Lab Test	N/A	31.5 lbs
Racking	ASTM E72	No cracking; net deflection 1/8"	Pass
Transverse Load	ASTM E1233 AC-212	10 cycles	Pass
Tensile Bond	ASTM C297 ASTM E2134		Pass
Structural Performance	ASTM E1233 Proc A	10 cycles	Pass
Flame Propagation	NFPA-285		Pass; UL Certified
Radiant Heat Ignition	NFPA-268	No Flame Spread / Ignition	Pass
VOC (g/L)	This product complies with US EPA, South Coast AQMD and Greenseal Standard VOC emission standards for architectural coatings. VOC less than 3 g/L.		
% Solids (by volume)	Calculated		65%

Decoplast Liquid Weather Resistive Barrier is a one-component, fluid-applied vapor permeable air/water-resistive barrier. It is applied directly to vertical, above-grade approved wall substrates and provides an excellent waterproof air barrier when combined with Decoplast joint and rough opening treatment. Available with or without aggregate.

Coverages per pail:

- Glass-Mat Gypsum Sheathing: 420-520 ft² (39-48.3 m²)
- Exterior Gypsum: 420-520ft² (39-48.3m²)
- Cement Board: 450-600 ft² (41.8-55.7 m²)
- Poured Concrete: 450-600 ft² (41.8-55.7m²)
- Plywood*: 135-175 ft² (12.5-16.3m²)
- OSB*: 135-175ft² (12.5-16.3 m²)
- CMU Standard Weight*: 225-275 ft² (20.5-25.5 m²)

*Coverage for C-1177 sheathing, cement board, poured concrete is at 10 mils WFT; for Plywood, OSB and CMU are at 20 mils WFT.

When used with Decoplast Sheathing Joint Tape to treat the sheathing joints and rough openings: (coverage may vary based on condition)

- 0'-4" Sheathing Fabric 625 ft (190.5m) / pail
- 0'-6" Sheathing Fabric 425 ft (129.5m) / pail
- 0'-9" Sheathing Fabric 285 ft (87m) / pail

Packaging

5 gallon (19L) 52.5 lbs / 23.8 kg per pail

Shelf Life

24 months, if properly stored and sealed.

Storage

Store Liquid Weather Resistive Barrier in a cool, dry place protected from freezing. Store at no less than 4°C (40°F). Protect from



Decoplast Liquid Weather Resistive Barrier

Decoplast Liquid Weather Resistive Barrier—Smooth

FEATURES	BENEFITS
Waterproof	Possible water damage minimized with repair and restoration costs associated
Vapor Permeable	Condensation risk in wall minimized from water vapor diffusion
Structural	No air leakage between sheathing and Decoplast WRB; rigid/stable under air pressure loads; does not tear or blow off the wall with wind
Resists UV Degradation / Added Durability	180 day exposure rating during construction.
Low VOC formulation	Safe, non-toxic; VOC compliant
Safe Installation	Low VOC, non-flammable as applied. Easy, fast installation; does not require specialized spray equipment or highly skilled labor

SURFACE PREPARATION

Substrate shall be dry, clean, sound and free of release agents, paint or other residue or coatings. Damaged sheathing must be removed and replaced.

Avoid application over irregular surfaces.

Substrate to be coated must be continuous without joints, holes, etc. exceeding 1/32" (0.8 mm) in size. Sheathing must be properly installed as required by applicable building codes or sheathing manufacturer.

MIXING

Mix with a clean, rust-free electric drill and paddle until thoroughly blended.

DILUTION OF DECOPLAST LIQUID WEATHER RESISTIVE BARRIER IS NOT RECOMMENDED



Decoplast Liquid Weather Resistive Barrier

Decoplast Liquid Weather Resistive Barrier—Smooth

APPLICATION

Clean, dry, properly prepared, frost-free surfaces are needed for application. Decoplast joint and rough opening treatment required for sheathing joints, inside and outside. Spot fasteners, knots or other voids in sheathing surface. Pre-spot all fasteners with Decoplast Liquid Weather Resistive Barrier if using Decoplast Sheathing Fabric including all other voids and spot surface defects such as overdriven fasteners, knots and voids.

Gypsum Sheathing, Glass-Mat Gypsum Sheathing, Exterior Plywood / Exterior: Apply Decoplast Liquid Weather Resistive Barrier to prepared substrate using spray equipment that can support a minimum 1 Gallon per minute (GPM) and a .031 mil tip at 3000+ psi., or with the appropriate size nap roller in a single, uniform coating at a wet thickness of 10 mils. Application over Glass-Mat Gypsum Sheathing, plywood and exterior gypsum sheathing: use a 1/2" (13 mm) nap roller.

Oriented Strand Board (OSB): A two-coat application of Decoplast Liquid Weather Resistive Barrier is required over OSB. The first coat is applied over the prepared substrate prior to treating sheathing joints, rough openings, and corners. Apply Decoplast Liquid Weather Resistive Barrier by spray or roller with a 1/2" (13mm) nap roller in a single, uniform coating at a wet thickness of 10 mils and allow drying. For air barrier, sheathing joints, rough openings, and corners must then be covered with Decoplast joint treatment. Substrate to receive the second coat of Decoplast Liquid Weather Resistive Barrier must be continuous without joints, holes, etc. exceeding 1/32" (0.8 mm) in size. The second coat of Decoplast Liquid Weather Resistive Barrier must be applied over the treated surface in a single, uniform coating to a wet thickness of 10 mils.

Concrete Masonry Wall Construction:

Concrete masonry wall construction must be structurally sound, clean, dry, and free from damage, frost, and all bond-inhibiting material, including dust, dirt, mold, algae, and efflorescence. Repair cracks up to 1/8 inch (3 mm) wide by filling. Rake the crack with a sharp tool to remove loose or friable material, and blow clean with oil-free compressed air. For cracks wider than 1/8" (3 mm) and up to 1/4" (6 mm) wide, use a paintable acrylic latex caulk to fill the crack, tool flush with the surface, and allow drying completely. For moving cracks consult a structural engineer. Protect crack repair materials from rain and freezing until dry.

Air and Moisture Barrier:

Spray-applied over CMU: Apply Decoplast Liquid Weather Resistive Barrier uniformly with suitable spray equipment. Backroll to fill the surface and allow drying. Apply a second uniform coat of Decoplast Liquid Weather Resistive Barrier and back-roll to achieve void / pinhole free surface. Depending on the condition of the surface, a minimum of 10 wet mils up to a maximum of 30 wet mils per coat is required. Apply additional coats if needed to achieve a VOID / PINHOLE FREE surface.

Roller-applied over CMU: Apply Decoplast Liquid Weather Resistive Barrier uniformly with a 3/4 inch (19 mm) nap roller and allow drying. Apply a second uniform coat of Decoplast Liquid Weather Resistive Barrier to achieve a void and pinhole free surface. Depending on the condition of the surface a minimum of 10 wet mils up to a maximum of 30 wet mils per coat is required. Apply additional coats if needed to achieve a VOID AND PINHOLE FREE surface.

IMPORTANT NOTE: Decoplast Liquid Weather Resistive Barrier functions as a waterproof air barrier on normal weight concrete masonry unit wall construction with flush (struck flush with the surface of the CMU) or concave joints when a minimum of two liberal coats are applied. Additional coats may be necessary depending on the condition of the CMU wall surface, CMU porosity, joint profile, and other variables that may exist. For "rough" CMU wall surfaces, skim coat the entire surface with Decoplast cementitious leveler before application of Decoplast Liquid Weather Resistive Barrier. A VOID AND PINHOLE FREE SURFACE must be achieved for Decoplast Liquid Weather Resistive Barrier to properly function as a waterproof air barrier on CMU wall surfaces.

Curing/Drying

Decoplast Liquid Weather Resistive Barrier is dry to touch and can be over coated within 2-4 hours under normal conditions [70°F (21°C), 50% RH]. Wait 24 hours before adhesive attachment of Decoplast insulation board. Final drying varies depending on temperature / humidity and surface conditions. Protect from rain and freezing until completely dry.

Material Storage

Keep containers covered to protect from skinning. If skin forms, remove the skinned material from container; remaining material is unaffected by skinned material.

Clean Up

Clean tools and equipment with water immediately after use. Dried material can only be removed mechanically.

Decoplast Liquid Weather Resistive Barrier

Decoplast Liquid Weather Resistive Barrier—Smooth



LIMITATIONS

- Apply only when the surface and ambient temperatures are above 40°F (4°C) and below 100°F (38°C) during application and drying period.
- Not recommended for use when cool, damp conditions exist for prolonged periods. Cool, damp conditions retard drying and may require extended periods of protection.
- Do not use on damp surfaces, below grade, or on surfaces subject to water immersion.
- Not recommended for use over fire-retardant treated or pressure treated plywood substrates.
- Not recommended for spanning sheathing joints or holes in excess of 1/8" (3 mm) wide.
- Contact Decoplast Technical Service for additional information regarding coverage over different brands.
- Ventilate temporary heaters to the exterior to prevent water vapor from accumulating on or within the wall assembly materials.
- Decoplast Liquid Weather Resistive Barrier can be left exposed to weather for up to 6 months of installation to protect the substrate.
- When Decoplast Liquid Weather Resistive Barrier is used in conjunction with Decoplast Continuous Insulation Systems ensure the Decoplast Liquid Weather Resistive Barrier surface is clean, dry, and free of surface contamination. Install Decoplast Continuous Insulation System Board within 30 days of the application of Decoplast Liquid Weather Resistive Barrier, or clean the surface and recoat with Decoplast Liquid Weather Resistive Barrier.
- For Portland cement stucco and similarly constructed wall assemblies over metal lath contact Decoplast Technical Service.

HEALTH AND SAFETY

Health Precaution

As with any chemical construction product, exercise care when handling. Product is water-based.

WARNING!

Causes eye and skin irritation.

Precaution Measures:

Wash hands thoroughly after handling. Wear protective gloves/protective clothing/eye protection/face protection.

First Aid:

Eye Contact: Immediately flush eyes with plenty of water for at least 15 to 20 minutes. Ensure adequate flushing of the eyes by separating the eyelids with fingers. Get immediate medical attention.

Skin Contact: Immediately wash skin with plenty of soap and water for 15 to 20 minutes, while removing contaminated clothing and shoes. Get medical attention if irritation develops or persists.

Inhalation: If inhaled, remove to fresh air. If not breathing, give artificial respiration or give oxygen by trained personnel. Seek immediate medical attention.

Ingestion: If swallowed, do NOT induce vomiting. Call a physician or poison control center immediately. Never give anything by mouth to an unconscious person.

Spills

Contain and collect with a suitable absorbent material such as cotton rags.

Disposal

Dispose of in accordance with local, state or federal regulations.

Warning

KEEP CONTAINER CLOSED WHEN NOT IN USE. KEEP OUT OF THE REACH OF CHILDREN. NOT FOR INTERNAL CONSUMPTION. FOR INDUSTRIAL USE ONLY. Consult the Safety Data Sheet (SDS) for further health and safety information.

LIMITED WARRANTY

This product is subject to a written limited warranty. Refer to Decoplast Specifications for more complete information on proper use and handling of this product.



697 Oakwood Avenue, West Hartford, CT 06110
voice: 860.761.2830 fax: 860.761.2831
www.decoplast.com

This product is intended for use by qualified professional contractors. All information conforms to the standard detail recommendations and specifications for the installation of Decoplast systems and is presented in good faith as of the date of publication of this document. GREENMAKER INDUSTRIES ASSUMES NO LIABILITY, EXPRESSED OR IMPLIED, AS TO THE WORKMANSHIP, ENGINEERING OR ARCHITECTURE OF ANY PROJECT. For more information regarding this product or additional Decoplast products, please contact a Decoplast Representative at (860) 761-2830 or visit our website www.Decoplast.com.

Decoplast Sheathing Fabric



TECHNICAL CHARACTERISTICS

MD Yarn	500 Denier H.T. Polyester
CD Yarn	500 Denier H.T. Polyester
Pattern	5 x 5 yarns/inch
Tensile	50 x 45 yarns/inch
Weight	2.13 oz/yd ²
Coating	F.R. PVC
Substrate	1 layer of 0.5 oz/yd ² Spunbond Polyester

Decoplast Sheathing Fabric is a cost-effective reinforcing fabric made by chemically bonding continuous filament yarn in an open mesh construction. It is commonly used to increase tear or puncture resistance, improve dimensional stability, or aid in processing. The utility of Decoplast Sheathing Fabric can be further enhanced by the use of functional binders for increased chemical, tear or moisture resistance, for proper chemical compatibility with the construction they are reinforcing, or for providing the adhesive properties needed for laminations.

PROPERTIES

Excellent Dimensional Stability

Tensile Strength

Increased Tear Resistance

Storage

Store off the ground in a dry area with adequate ventilation. Protect from extreme heat 130°F, moisture and direct sunlight.

HEALTH AND SAFETY

Health Precaution

As with any chemical construction product, exercise care when handling.

Safety Precaution

Wash hands thoroughly after handling. Wear protective gloves/protective clothing/eye protection/face protection.

First Aid:

EYE CONTACT: Immediately flush eyes with plenty of water for at least 15 to 20 minutes. Contact a physician.

SKIN CONTACT: Immediately wash skin with plenty of soap and water for 15 to 20 minutes, while removing contaminated clothing and shoes. Get medical attention if irritation develops or persists. **Inhalation:** Move to fresh air. If symptoms persist, call a physician.

INGESTION: Accidental ingestion of this material is unlikely. If this does occur, watch person for several days to make sure intestinal blockage does not occur. Rinse mouth with water and drink water to remove fibers from the throat. If symptoms persist, call a physician.

Disposal

Dispose of in accordance with local, state or federal regulations.

Warning

KEEP CONTAINER CLOSED WHEN NOT IN USE. KEEP OUT OF THE REACH OF CHILDREN. NOT FOR INTERNAL CONSUMPTION. FOR INDUSTRIAL USE ONLY. Consult the Safety Data Sheet (SDS) for further health and safety information.

LIMITED WARRANTY

This product is subject to a written limited warranty. Refer to Decoplast Specifications for more complete information on proper use and handling of this product.



This product is intended for use by qualified professional contractors. All information conforms to the standard detail recommendations and specifications for the installation of Decoplast systems and is presented in good faith as of the date of publication of this document. GREENMAKER INDUSTRIES ASSUMES NO LIABILITY, EXPRESSED OR IMPLIED, AS TO THE WORKMANSHIP, ENGINEERING OR ARCHITECTURE OF ANY PROJECT. For more information regarding this product or additional Decoplast products, please contact a Decoplast Representative at (860) 761-2830 or visit our website www.Decoplast.com.



Mortairvent® | Rainscreen Drainage Mat for Exterior Siding

DESCRIPTION

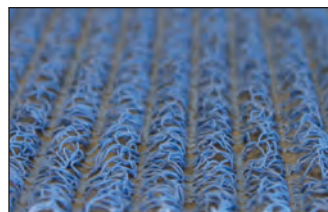
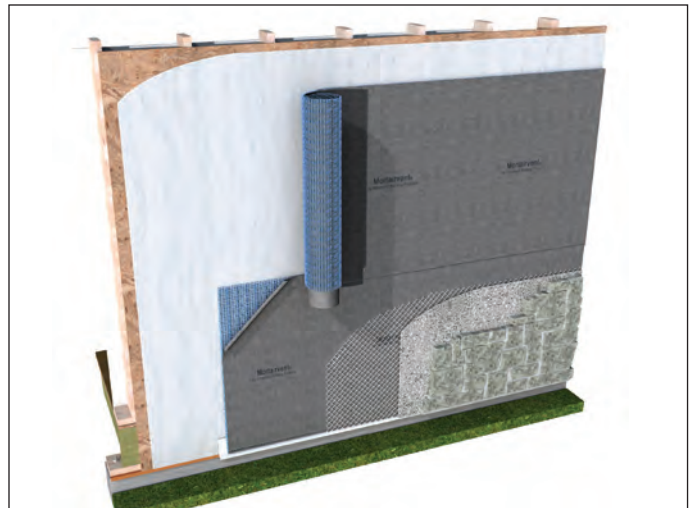
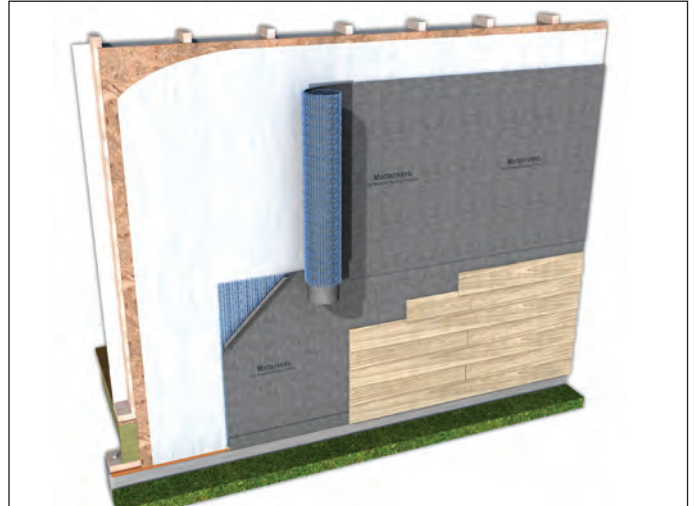
When building exterior walls with stone, stucco, brick, cedar, or fiber cement siding, it is important to use an effective rainscreen system that will provide a means for drainage and ventilation. Moisture will find its way into these wall systems by way of cracked mortar joints, gaps or cracks in the surface of the material. Natural absorption of the wood or fiber cement also needs to be considered. Once this moisture penetrates the outer surface of the wall, it becomes trapped in the wall system with no way to escape, creating the perfect environment for toxic mold growth and possible structural failure. Mortairvent® is a drainage and ventilation system specifically designed for use with most exterior siding materials.

BENEFITS

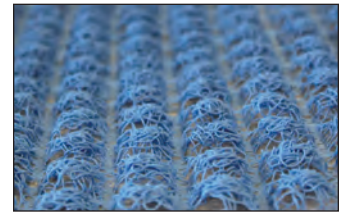
- » 95% open design creates a continuous capillary break and channel for moisture to drain and accelerates drying of the exterior cladding
- » Durable polymer material is resistant to most known corrosive chemicals and does not provide a food source for mold or mildew
- » Minimizes staining, peeling, and blistering of exterior finishes
- » Made from recycled materials qualifying for LEED credits
- » Simple and quick to install. Easier and more cost effective than traditional furring strip methods
- » 2-ply design features a backer fabric that improves the tensile and compressive strength properties of the rainscreen. The fabric also serves to deflect mortar when used with stucco or a masonry veneer siding
- » Integrated insect screen

INSTALLATION INSTRUCTIONS

- » Apply a weather resistant barrier over sidewall sheathing.
- » Note: some regions may require two layers of weather resistant barrier. Check local codes for more information.
- » Install Mortairvent® after windows and doors have been properly installed and flashed. Starting at the base of the wall unroll Mortairvent® from right to left with the four-inch fabric flap at the bottom, the three-dimensional (blue) polymer matrix against the weather resistant barrier and the fabric facing the exterior of the building. Staple or nail every three square feet.
- » On the first (bottom) course only, un-fold the four-inch fabric flap and tuck it between the (blue) polymer matrix and the weather resistant barrier to create an insect screen.
- » On intermediate courses, butt blue polymer material together tightly without overlapping. Pull four inch fabric flap over previous course (shingle style) and staple.
- » On top course, invert the roll and unroll left to right with the four-inch fabric flap at the top. Unfold the fabric flap and tuck it between the (blue) matrix and the weather resistant barrier to create an insect screen.
- » Apply siding over Mortairvent® using manufacturer’s recommended fasteners and spacing.



Mortairvent® (.25 in. / 6mm)



Mortairvent® (.40 in. / 10mm)

PHYSICAL DATA	Mortairvent® 202	Mortairvent® 203
Core Material	Polypropylene (cornrow)	Polypropylene (waffle)
Thickness	0.25 in. (6 mm)	.40 in. (10 mm)
Roll Length	61.5 ft. (18.75 m)	40 ft. (12.19 m)
Roll Width	39 in. (99.06 cm)	39 in. (99.06 cm)
Roll Weight	14 lbs. (6.35 kg)	16 lbs. (7.26 kg)
Coverage Area	200 sq. ft. (18.58 m ²)	130 sq. ft. (12.08 m ²)

TECHNICAL DATA Mortar Deflection, Ventilation, & Drainage Mat Options	Mortairvent® 202	Mortairvent® 203
Mortar Deflection & Ventilation Material Thickness	.25 in. (6 mm)	.40 in. (10 mm)
Density / Specific Gravity (ASTM D 792, Method A)	0.901 g/cm ³	0.903 g/cm ³
Porosity (open space) ECTCTASC00197)	93.8 %	95.3 %
Mass / Unit Area (composite) (ASTM D 5261 / D 6566)	11.25 oz/sq.yd	15.10 oz/sq.yd
Hydraulic Transmissivity (ASTM D 4716)	3.70 gpm/ft width	7.01 gpm/ft width
Air Transmissivity (ASTM D 4716, mod)	15.8 cu.ft/min/ft width	54.5 cu.ft/min/ft width
Flame Spread & Smoke Index (ASTM E 84)	Class A Fire Rated	Class A Fire Rated

Mortairvent® 10mm product meets the physical requirements of Section 9.27.2.2, Item 1b of the 2005 National Building Code of Canada and 2006 British Columbia Building Code.



ADVANCED BUILDING PRODUCTS INC.

Phone: 800-252-2306

Fax: 207-490-2998

info@advancedflashing.com

www.advancedflashing.com



Deco-Prep Adhesive Primer



TECHNICAL DATA

REPORT	TEST METHOD	TEST CRITERIA	TEST RESULTS
Surface Burning	ASTM E-84	< 25 Flame Spread	Pass
		< 450 Smoke Developed	Pass
Freeze-thaw Resistance	ASTM E-2485	60 cycles	60 cycles; No deleterious effects
Tensile Bond	ASTM C-297	28 days	>10 psi (104 kPa)

Decoplast Deco-Prep is a factory mixed, acrylic-based adhesive primer for difficult substrates. Deco-Prep is designed to bond to nearly all non-porous substrates such as glazed brick, metal, concrete, alkyd resin paints and various plastics.

SURFACE PREPARATION

Surfaces must be clean, dry, and free of frost, damage, releasing agents, including dirt, efflorescence, form oil and other foreign matter. Loose or damaged material must be removed by water blasting, sandblasting or mechanical wire brushing and repaired. Avoid application over irregular surfaces. Resurface, patch or level surfaces to required tolerance and smoothness with appropriate Decoplast leveling materials.

Coverage

950 - 1200 ft² (88.3 - 111.4 m²) per pail over porous substrates.

1200 - 2000ft² (111.4-185.8 m²) per pail over non porous substrates

MIXING

Additives are not permitted.

If necessary, mix with a clean, rust-free electric drill and paddle to a uniform consistency. Close container when not in use. Clean tools with water immediately after use.

Coverages may vary depending on application technique and surface conditions.

Packaging

5 gal pail (19L) 42.5 lbs / 19.3 kg per pail

Shelf Life

24 months, if properly sealed and stored.

Storage

Store off the ground in a cool/dry area. Protect from extreme heat [90°F (32°C)], moisture and direct sunlight.

Deco-Prep Adhesive Primer



APPLICATION

Apply only to sound and clean, dry, properly prepared, frost-free surfaces.

Bonding Agent Application:

Apply evenly with a 3/8" nap roller or brush. Let dry. Verify desired adhesion results by field testing a trial application installed using the proposed means and methods.

Finish must be applied at or above 45°F (7.2°C).

Curing/Drying

Decoplast Deco-Prep Adhesive Primer dries within 24 hours under normal conditions [70°F (21°C), 50% RH]. Drying time varies depending upon temperature/humidity and surface conditions. Allow additional drying time during cold or humid weather before application of primer and finish. For low absorption substrates, prolonged drying times may be required. Protect from rain, freezing and continuous high humidity until completely dry.

Clean Up

Clean tools and equipment with water immediately after use. Dried material can only be removed mechanically.

LIMITATIONS

Use Decoplast Deco-Prep Adhesive Primer only when surface and ambient temperatures are above 45°F (7.2°C) and below 100°F (38°C) during application and drying period.

Store Decoplast materials in a cool, dry place.

Do not apply Decoplast Deco-Prep Adhesive Primer to frozen surfaces.

Decoplast Deco-Prep Adhesive Primer is not recommended for use when cool damp conditions exist for prolonged periods.

Cool damp conditions retard drying and may require extended periods of protection.

Do not use on damp surfaces or on substrates with high moisture.

HEALTH AND SAFETY

Health Precaution

Decoplast Deco-Prep Adhesive Primer is water-based. As with any chemical construction product, exercise care when handling.

WARNING!

Causes eye and skin irritation.

Safety Precaution

Wash hands thoroughly after handling. Wear protective gloves/protective clothing/eye protection/face protection.

First Aid:

EYE CONTACT: Immediately flush eyes with plenty of water for at least 15 to 20 minutes. Ensure adequate flushing of the eyes by separating the eye lids with fingers. Get immediate medical attention.

SKIN CONTACT: Immediately wash skin with plenty of soap and water for at least 15 to 20 minutes, while removing contaminated clothing and shoes. Get medical attention if irritation develops or persists.

INHALATION: If inhaled, remove to fresh air. If not breathing give artificial respiration or give oxygen by trained personnel. Seek medical attention immediately.

INGESTION: If swallowed, do NOT induce vomiting. Call a physician or a poison control center immediately. Never give anything by mouth to an unconscious person.

Spills

Contain and clean with appropriate absorbent materials.

Disposal

Dispose of in accordance with local, state or federal regulations.

Warning

KEEP CONTAINER CLOSED WHEN NOT IN USE. KEEP OUT OF THE REACH OF CHILDREN. NOT FOR INTERNAL CONSUMPTION. FOR INDUSTRIAL USE ONLY. Consult the Safety Data Sheet (SDS) for further health and safety information.

LIMITED WARRANTY

This product is subject to a written limited warranty. Refer to Decoplast Specifications for more complete information on proper use and handling of this product.



Deco-Lath

Deco-Lath 4.3 oz

Deco-Lath 8.8 oz 3D

TECHNICAL DATA / PROPERTIES

REPORT	TEST METHOD	TEST CRITERIA	TEST RESULTS	
Tensile Strength (lb/in) Product	ASTM D-5035	Deco-Lath 4.3 oz/yard	210/220	180-219
		Deco-Lath 8.8 oz/yard	370-430	245-310
Weave			LENO	
Color			Grey	
Product Thickness		Deco-Lath 4.3 oz/yard	0.138/in	3.5/mm
		Deco-Lath 8.8 oz/yard	0.217/in	5.5/mm
Coating			Alkali Resistant	

Decoplast Deco-Lath is an open weave, three-dimensional, self-furred, nominal 1/4" (6.3mm) thick glass fiber reinforcing lath designed for use with field mix exterior cement plaster conforming to ASTM C926 in "scratch and brown" applications. Listed in ICC-ESR-2429. Complies with the performance requirements of ASTM C1788 (per the test methods in ASTM C1764) and the installation requirements of ASTM C1787.

FEATURES BENEFITS

Non-metallic	Will not rust
Pliable, with no sharp edges	Easier and safer to handle and cut
Non-directional	Can be applied vertically or horizontally
Wide rolls	Fewer overlaps required to give better coverage
Three-dimensional profile	Self-furring, excellent mechanical key using traditional fastening procedures
Alkali resistant	Long-term durability and performance
Package (light-weight rolls)	Application time/labor savings

Coverage
487.5 ft² / roll

Packaging
39" x 150" lineal feet roll in poly bag;
Deco-Lath 4.3 weighs approximately 15 lb (6.8 kg) per roll.
Deco-Lath 8.8 weighs approximately 31 lb (14 kg) per roll.

Storage
Store off the ground in dry area, upright position. Protect from extreme heat [90°F (32°C)], moisture and direct sunlight.

USE

A component of a 1/2" to 7/8" (13mm to 22mm) thick cementitious exterior wall coating application of exterior Portland cement plaster (traditional stucco) application that provides keying and continuous reinforcement for stucco used on vertical wall applications with solid backing. May also be used as a mortar base for light-weight veneer facing products such as precast stone veneer (ASTM C1780).

Not for use on soffits or open framing.

SURFACE PREPARATION

Surfaces must be clean, dry, and free of frost, damage and all bond-inhibiting materials, including dirt, efflorescence, form oil and other foreign matter. Damaged sheathing must be removed and replaced. Avoid application over irregular surfaces.

APPLICATION

General:

Apply Deco-Lath in accordance with Decoplast specifications and the following:

- Acceptable substrates include cement board (ASTM C1325 Type A Exterior), gypsum sheathing (ASTM C79/C1396 or C1177), Exposure 1 or better exterior grade plywood, Exposure 1 OSB, poured concrete or unit masonry.
- Apply/Install substrate per the manufacturer's instructions and applicable building codes.
- Not for use over open framing.



Deco-Lath

Deco-Lath 4.3 oz

Deco-Lath 8.8 oz 3D

APPLICATION CONTINUED

Water Resistive Barrier:

- Not required on unit masonry or concrete substrates to receive the cement plaster stucco.
- Over wood or metal framing with sheathing, a weather-resistive barrier must be installed. When installed over wood based sheathing (Plywood or OSB), two layers of Grade "D" building paper are required by IBC prior to installation of Deco-Lath. Other acceptable water-resistive barriers include polymeric water resistive-barriers such as Tyvek® Stuccowrap® and acceptable equals that comply with and are recognized by local building codes.
- Trowel/roller applied water-resistive barriers can be used provided a subsequent layer of building papers or a polymeric water-resistive barrier such or building paper that is applied over the trowel/roller applied weather barrier to act as a slip sheet.
- Install the water-resistive barrier over the substrate according to manufacturer's specifications and applicable building code requirements.
- The water-resistive barrier shall be free of any damage such as holes or breaks, and must be applied to all surfaces to receive the cement plaster stucco.
- Wrap the water-resistive barrier into rough openings to increase the level of protection to the building frame and interior.

Trim: Install trim accessories per drawings and specification and ASTM C1063.

Apply Deco-Lath over substrate with minimum 3" overlap at vertical and horizontal edges and overlap on flange of trim accessories. Deco-Lath can be applied horizontally or vertically and should be applied such that it is flat and free of ripples, wrinkles, etc.

Fasteners:

- ULP-302 (1 3/4") or Lath Plate (1 1/4") Mechanical Fastening Systems by Wind-Lock Corp.
- **Masonry:** masonry type [M] expansion fastener with ULP 302 diameter washer; or Lath Plate 25 mm (1") minimum penetration into masonry. Fastener spacing 6" o.c. vertically and 16" o.c. horizontally.
- **Light Gauge Steel Framing/Furring (20 Gauge):** light metal type [LM] bugle head screws with ULP 302 (1 3/4") diameter washer or Lath Plate 16 mm (5/8") minimum penetration into framing 6" o.c. vertically and 16" o.c. horizontally
- **Heavy Gauge Steel Framing (18 to 12 Gauge maximum):** metal type [S] bugle head screws with ULP 302 (1 3/4") diameter washer or Lath Plate or 32 mm (1 1/4") long x 2.5 mm (1/8") diameter VersaPin Gripshank® fasteners by Aerosmith Fastening Systems with Lath Plates; 16 mm (5/8") minimum penetration to framing 6" o.c. vertically and 16" o.c. horizontally.
- **Wood framing:** wood type [W] bugle head screws with ULP 302 (1 3/4") diameter washer or Lath Plate; 16 mm (5/8") minimum penetration into framing or minimum 16 gauge wire staples with minimum 3/4" crown and minimum 3/4" penetration into framing, 6" o.c. vertically and 16" o.c. horizontally.

Apply cement plaster stucco within 60 days of Deco-Lath application.

Install Exterior Cement Plaster Stucco (ASTM C926) or Cementitious Exterior Wall Coating (ICC-ES AC-11) per Specifications and Details.

Install Veneer facing mortar per Specifications, Details and veneer facing manufacturer's specifications.



Deco-Lath

Deco-Lath 4.3 oz

Deco-Lath 8.8 oz 3D

LIMITATIONS

Decoplast Deco-Lath should only be used in accordance with appropriate Decoplast Insulated Wall Cladding Specifications or other published recommendations.

Not for use on soffits or open framing.

Minimum thickness of 1/2", maximum thickness of 7/8" when DecoWall FRS or other cementitious exterior wall coating is installed in accordance with ICC-ES-AC-11.

Maximum allowable weight of adhered veneer facing products is 24 lbs. per square foot (includes veneer weight and mortar scratch and bed coat).

HEALTH AND SAFETY

Health Precaution

Contains glass fiber. As with any chemical construction product, exercise care when handling.

Safety Precaution

Wash hands thoroughly after handling. Wear protective gloves/protective clothing/eye protection/face protection.

First Aid:

EYE CONTACT: Immediately flush eyes with plenty of water for at least 15 to 20 minutes. Contact a physician.

Disposal

Dispose of in accordance with local, state or federal regulations.

Warning

KEEP CONTAINER CLOSED WHEN NOT IN USE. KEEP OUT OF THE REACH OF CHILDREN. NOT FOR INTERNAL CONSUMPTION. FOR INDUSTRIAL USE ONLY. Consult the Safety Data Sheet (SDS) for further health and safety information.

LIMITED WARRANTY

This product is subject to a written limited warranty. Refer to Decoplast Specifications for more complete information on proper use and handling of this product.

Decowall One Coat FRS Concentrate



TECHNICAL DATA

REPORT	TEST METHOD	TEST CRITERIA	TEST RESULTS
Compressive Strength	ASTM C-109	7 Day	1380 psi
		28 Day	2100 psi
Tensile Strength	ASTM C-307	28 Day	230 psi
Flexural Strength	ASTM C-580	28 Day	425 psi
Water Absorption	ASTM C-413		6.3%

Decowall One Coat Fiber Reinforced Stucco Concentrate is a formulation of Portland cement, engineered fibers and admixtures. Used in combination with proper sand, it provides a traditional scratch and brown coat that is directly applied over untreated concrete, CMU, brick and Deco-Lath (Optional - Expanded Metal Lath). It produces a superior crack resistant stucco.

SURFACE PREPARATION

Surfaces must be clean, dry, and free of frost, damage and all bond-inhibiting materials, including dirt, efflorescence, form oil and other foreign matter. Damaged sheathing must be removed and replaced.

Avoid application over irregular surfaces.

MIXING

Mix approximately (5-6.5) quarts (4.7-6.2 L) of clean, potable water per 80 lb. (36.3 kg) bag of Decowall One Coat FRS Concentrate with the proper amount of clean sand conforming to ASTM C-144 or C-897.

Mix with a clean, rust-free electric drill and blend to a lump-free, smooth consistency.

APPLICATION

Decowall One Coat FRS Concentrate 80 lb. (36.3 kg) bag: Add required 200- 240 lbs. of stucco sand meeting ASTM C-926 Standard Specification for application of Portland Cement based plaster.

Deco-Lath: Excellent alternative to conventional sand/cement stucco. Decowall One Coat FRS Concentrate completely replaces the need for conventional (3) coat stucco over Deco-Lath. It can be used as a one coat application over Deco-Lath with a double back skim coat and texture.

Masonry: Can be used over all types of masonry surfaces, including precast.

Exterior Insulation Finish System: Can be used as an excellent surface coating over approved types of insulation materials when used in conjunction with a Decoplast Weather Resistive Barrier Membrane and Deco-Lath per ASTM C-1063 (Optional- Expanded Metal Lath).

Curing/Drying:

Dries within 24 hours under normal drying conditions [70°F (21°C), 50% RH]. Allow additional drying time during cold, humid, or wet weather until insulation board is fully adhered before rasping, and before application of primer or finish to hardened Decowall One Coat FRS Concentrate. Protect from rain, freezing and continuous high humidity until completely dry. Decoplast recommends using Decoplast Primer prior to application of finish.

Clean Up:

Clean tools and equipment with water immediately after use. Dried material can only be removed mechanically.

Coverage

80 lb. Bag — Decoplast One Coat Fiber Reinforced Concentrate with sand added: Total (240- 280) lb will cover:

220 ft² at 1/8"

110 ft² at 1/4"

75 ft² at 3/8"

Packaging

80 lb. bag (36.3 kg)

Shelf Life

24 months, if properly stored and sealed.

Storage:

Protect from extreme heat [90°F (32° C)], freezing and direct sunlight.

Decowall One Coat FRS Concentrate



LIMITATIONS

Use Decowall One Coat FRS Concentrate only when surface and ambient temperatures are above 40°F (4°C) during application and drying period.

Sloped surfaces: Refer to Decoplast details.

Decowall One Coat FRS Concentrate should not be used on weather-exposed horizontal or below grade surfaces or where immersion in water may occur.

Prevent rapid loss of moisture from exposure to direct sun, wind and high temperatures.

Decowall One Coat FRS Concentrate should not be used as a finish coating.

HEALTH AND SAFETY

Health Precaution

Contains Portland cement. Avoid breathing dust. As with any chemical construction product, exercise care when handling.

DANGER!

Causes serious eye damage and/or skin irritation. May cause an allergic skin reaction, respiratory irritation, drowsiness or dizziness.

Safety Precaution

Wash hands thoroughly after handling. Wear protective gloves/protective clothing/eye protection/face protection.

First Aid:

EYE CONTACT: Immediately flush eyes with plenty of water for at least 15 to 20 minutes. Ensure adequate flushing of the eyes by separating the eye lids with fingers. Get immediate medical attention.

SKIN CONTACT: Immediately wash skin with plenty of soap and water for at least 15 to 20 minutes, while removing contaminated clothing and shoes. Get medical attention if irritation develops or persists.

INHALATION: If inhaled, remove to fresh air. If not breathing give artificial respiration or give oxygen by trained personnel. Seek medical attention immediately.

INGESTION: If swallowed, do NOT induce vomiting. Call a physician or a poison control center immediately. Never give anything by mouth to an unconscious person.

Spills

Contain and collect in an appropriate container. Uncured material may be removed with water.

Disposal

Dispose of in accordance with local, state or federal regulations.

Warning

KEEP CONTAINER CLOSED WHEN NOT IN USE. KEEP OUT OF THE REACH OF CHILDREN. NOT FOR INTERNAL CONSUMPTION. FOR INDUSTRIAL USE ONLY. Consult the Safety Data Sheet (SDS) for further health and safety information.

LIMITED WARRANTY

This product is subject to a written limited warranty. Refer to Decoplast Specifications for more complete information on proper use and handling of this product.



697 Oakwood Avenue, West Hartford, CT 06110
voice: 860.761.2830 fax: 860.761.2831
www.decoplast.com

This product is intended for use by qualified professional contractors. All information conforms to the standard detail recommendations and specifications for the installation of Decoplast systems and is presented in good faith as of the date of publication of this document. GREENMAKER INDUSTRIES ASSUMES NO LIABILITY, EXPRESSED OR IMPLIED, AS TO THE WORKMANSHIP, ENGINEERING OR ARCHITECTURE OF ANY PROJECT. For more information regarding this product or additional Decoplast products, please contact a Decoplast Representative at (860) 761-2830 or visit our website www.Decoplast.com.



Decoplast Primer

64 Standard Colors / Custom Colors

TECHNICAL DATA

REPORT	TEST METHOD	TEST CRITERIA	TEST RESULTS
Surface Burning	ASTM E-84	< 25 Flame Spread	Pass
		< 450 Smoke Developed	Pass

FEATURES BENEFITS

Acrylic Based	Excellent adhesion; finish coat adhesion improvement
Tinted for Finish	Color uniformity improvement
Substrate Absorption	Improves coverage, water-resistance, and reduces possible efflorescence
Non Vapor Barrier	Allows substrate to breathe naturally
Water-Based	Safe, non-toxic; cleans up with water
Low VOC	Safe for workers and the environment

SURFACE PREPARATION

Surfaces must be clean, dry, and free of frost, damage, releasing agents, including dirt, efflorescence, form oil and other foreign matter. Loose or damaged material must be removed by water blasting, sandblasting or mechanical wire brushing and repaired. Avoid application over irregular surfaces. Resurface, patch or level surfaces to required tolerance and smoothness with appropriate Decoplast leveling materials.

Pressure washing is a recommended means of surface preparation. Follow necessary safety precautions and adjust pressure to avoid damage to the underlying substrate or substrate condition. For mold, algae, and mildew removal, treat surfaces with a commercial mildew removal and/or wash product carefully following manufacturer's application and safety directions.

Decoplast Primer is used for priming prepared concrete, masonry, plaster, EIFS base coat, or drywall surfaces prior to application of Decoplast Finishes and Coatings.

Coverage

800-1000 ft² (74.3-92.9 m²) per pail applied at 4 to 6 wet mils per coat

Packaging

5 gal pail (19L) 47.5 lbs / 21.6 kg per pail

Shelf Life

24 months, if properly sealed and stored.

Storage

Store off the ground in a cool/dry area. Protect from extreme heat [90°F (32°C)], moisture and direct sunlight.



Decoplast Primer

64 Standard Colors / Custom Colors

MIXING

Mix with a clean, rust-free electric drill and paddle to a uniform consistency. Close container when not in use. Clean tools with water immediately after use.

APPLICATION

Apply only to sound and clean, dry, properly prepared surfaces.

Airless Spraying:

Use airless sprayer with minimum 19 mil tip. Use a starting pressure of 1900 psi and adjust as necessary.

As a primer:

Apply at 4-6 wet mils per coat. Multiple coats may be required, depending on surface condition.

Curing/Drying Time

Times assume 70° F (21° C) and 50% relative humidity. Drying time varies with temperature/humidity and surface conditions. Protect installed product from rain, freezing, and continuous high humidity until completely dry.

Clean Up

Clean all tools and equipment immediately with water. Cured material may be removed by mechanical means.

LIMITATIONS

- Use Decoplast Primer only when surface and ambient temperatures are above 40°F (4°C) and below 100°F (38°C) during application and drying period.
- Store Decoplast materials in a cool, dry place.
- Sloped surfaces: Refer to Decoplast details.
- Decoplast Primer should not be used on horizontal surfaces unless protected with appropriate Decoplast Finish materials.
- Do not apply Decoplast Primer to frozen surfaces.

HEALTH AND SAFETY

Health Precaution

Decoplast Primer is water-based. As with any chemical construction product, exercise care when handling.

WARNING!

Causes eye and skin irritation.

Safety Precaution

Wash hands thoroughly after handling. Wear protective gloves/protective clothing/eye protection/face protection.

First Aid:

EYE CONTACT: Immediately flush eyes with plenty of water for at least 15 to 20 minutes. Ensure adequate flushing of the eyes by separating the eye lids with fingers. Get immediate medical attention.

SKIN CONTACT: Immediately wash skin with plenty of soap and water for at least 15 to 20 minutes, while removing contaminated clothing and shoes. Get medical attention if irritation develops or persists.

INHALATION: If inhaled, remove to fresh air. If not breathing give artificial respiration or give oxygen by trained personnel. Seek medical attention immediately.

INGESTION: If swallowed, do NOT induce vomiting. Call a physician or a poison control center immediately. Never give anything by mouth to an unconscious person.

Spills

Contain and clean with appropriate absorbent materials.

Disposal

Dispose of in accordance with local, state or federal regulations.

Warning

KEEP CONTAINER CLOSED WHEN NOT IN USE. KEEP OUT OF THE REACH OF CHILDREN. NOT FOR INTERNAL CONSUMPTION. FOR INDUSTRIAL USE ONLY. Consult the Safety Data Sheet (SDS) for further health and safety information.

LIMITED WARRANTY

This product is subject to a written limited warranty. Refer to Decoplast Specifications for more complete information on proper use and handling of this product.



697 Oakwood Avenue, West Hartford, CT 06110
voice: 860.761.2830 fax: 860.761.2831
www.decoplast.com

This product is intended for use by qualified professional contractors. All information conforms to the standard detail recommendations and specifications for the installation of Decoplast systems and is presented in good faith as of the date of publication of this document. GREENMAKER INDUSTRIES ASSUMES NO LIABILITY, EXPRESSED OR IMPLIED, AS TO THE WORKMANSHIP, ENGINEERING OR ARCHITECTURE OF ANY PROJECT. For more information regarding this product or additional Decoplast products, please contact a Decoplast Representative at (860) 761-2830 or visit our website www.Decoplast.com.



Decoplast Exterior Textured Finishes

Ispica (Freestyle) / Genova (Fine Sand) / San Remo (Coarse Sand)
 Trieste (Medium Sand) / Taormina (Fine Swirl) / Graffiato (Medium Swirl)

TECHNICAL DATA

REPORT	TEST METHOD	TEST CRITERIA	TEST RESULTS
Surface Burning	ASTM E-84	< 25 Flame Spread < 450 Smoke Developed	Pass Pass
Flexibility	ASTM D-522	4" mandrel bend	Pass
Water Vapor Transmission	ASTM E-96	28 days	Pass
Accelerated Weathering	ASTM G-154	2000 hours	Pass; No deleterious effects
Freeze-thaw Resistance	ASTM 2485	60 cycles	No deleterious effects; 90 cycles
Mildew Resistance	ASTM D-3273	No growth @ 28 days	Pass
Salt Spray Resistance	ASTM B-117	300 hours	Pass; No deleterious effects
Water Resistance	ASTM D-2247	14 days	Pass; No deleterious effects
Abrasion Resistance	ASTM D-968	528 qts. sand	No cracking, checking or Loss of film integrity @ 528 qts.
Adhesion	ASTM C-297	28 days	> 90 to concrete
Fire Resistance	ASTM E-119	No effect on fire resistance rating of Existing rated assembly	Pass; Classified UL

Decoplast Exterior Textured Finishes are a ready-mixed, 100% acrylic based exterior textured coating used as a decorative wall finish over all approved basecoats, prepared concrete, masonry and plaster substrates.

Coverage

Decoplast Limestone (Ispica): Varies with technique.

Decoplast Fine Sand Finish (Genova): 130-145 ft² (12.1-13.5 m²) per pail.

Decoplast Medium Sand Finish (Trieste): 115- 130 ft² (10.7-12.1 m²) per pail.

Decoplast Coarse Sand Finish (San Remo): 85- 100 ft² (7.9-9.3 m²) per pail.

Decoplast Fine Swirl Finish (Taormina): 125-140 ft² (11.6-13 m²) per pail.

Decoplast Medium Swirl Finish (Graffiato): 130-145 ft² (12.1-13.5m²) per pail.

*Coverages may vary depending on application technique and surface conditions

FEATURES BENEFITS

Integral Color	Reduced recoating and maintenance; Unlimited Color Options
Weather Resistant	Repulsion of water and resistance of wind-driven rain
Breathable	Resists blistering, peeling and flaking; breathes naturally

Packaging

5 gal pail (19L) 68.5 lbs / 31 kg per pail

Shelf Life

24 months, if properly sealed and stored.

Storage

Store off the ground in a cool/dry area. Protect from extreme heat [90°F (32°C)], moisture and direct sunlight.



Decoplast Exterior Textured Finishes

Ispica (Freestyle) / Genova (Fine Sand) / San Remo (Coarse Sand)
Trieste (Medium Sand) / Taormina (Fine Swirl) / Graffiato (Medium Swirl)

SURFACE PREPARATION

Concrete and masonry surfaces: Surfaces must be clean, dry, and free of frost, damage, releasing agents, including dirt, efflorescence, form oil and other foreign matter. Loose or damaged material must be removed by water blasting, sandblasting or mechanical wire brushing and repaired. Avoid application over irregular surfaces. Resurface, patch or level surfaces to required tolerance and smoothness with appropriate Decoplast leveling materials.

Exterior Insulation and Finish

Decoplast Systems (EIFS): Surface must be free of all releasing agents.

Gypsum wallboard surfaces: Wallboard must be taped and fasteners spotted with joint compound. Surface must be free of dust, dirt and releasing agents. Prime with appropriate Decoplast Primer.

Decoplast recommends priming cementitious substrates using Decoplast primer prior to application of finish.

MIXING

Mix with a clean, rust-free electric drill and paddle to a uniform consistency. A small amount of clean water may be added to aid workability. Limit addition of water to amount needed to achieve the finish texture. Additives are not permitted. Close container when not in use. Clean tools with water immediately after use.

APPLICATION

Apply only to sound and clean, dry, properly prepared surfaces.

Trowel: Apply Decoplast Textured Finish with a clean stainless steel trowel to a rough thickness slightly more than the largest aggregate size. Apply the finish keeping thickness uniform. Maintain a wet edge on Decoplast Textured Finish by applying and texturing continually over the wall surface. Work Decoplast Textured Finish to corners, joints or other natural breaks. Do not allow material to set up within an uninterrupted wall area. Achieve final texture by floating with the appropriate trowel.

Note: Decoplast Ispica (Freestyle) Finish requires two coats.



Decoplast Exterior Textured Finishes

Ispica (Freestyle) / Genova (Fine Sand) / San Remo (Coarse Sand)
Trieste (Medium Sand) / Taormina (Fine Swirl) / Graffiato (Medium Swirl)

APPLICATION Continued

Spray: Decoplast Textured Finishes can be applied with a gravity-feed sprayer, texture spray pump machine, or other appropriate equipment. To ensure full coverage of the surface, apply in an even coat.

IMPORTANT: ALWAYS check color for proper match.

Apply coating continuously, maintain a wet edge to eliminate cold joints. Work Decoplast Textured Finish to corners, joints or other natural breaks. Avoid application in direct sunlight. Protect installed product from rain, freezing, and continuous high humidity until completely dry.

Curing/Drying

Decoplast Textured Finishes dry within 24 –72 hours under normal conditions [70°F (21°C), 50% RH]. Drying time varies with temperature, humidity and surface conditions.

Clean Up

Clean tools and equipment with water immediately after use. Remove dried material from tools and equipment mechanically.

LIMITATIONS

Use Decoplast Textured Finishes only when surface and ambient temperatures are above 40°F (4°C) and below 100°F (38°C) during application and drying period.

Store Decoplast materials in a cool, dry place.

Sloped surfaces: Refer to Decoplast details.

Decoplast Textured Finishes should not be used on weather-exposed horizontal or below grade surfaces or where immersion in water may occur.

Do not apply Decoplast Textured Finish to frozen surfaces.

HEALTH AND SAFETY

Health Precaution

Decoplast Textured Finishes are water-based. As with any chemical construction product, exercise care when handling.

WARNING!

Causes eye and skin irritation.

Safety Precaution

Wash hands thoroughly after handling. Wear protective gloves/protective clothing/eye protection/face protection.

First Aid:

EYE CONTACT: Immediately flush eyes with plenty of water for at least 15 to 20 minutes. Ensure adequate flushing of the eyes by separating the eye lids with fingers. Get immediate medical attention.

SKIN CONTACT: Immediately wash skin with plenty of soap and water for at least 15 to 20 minutes, while removing contaminated clothing and shoes. Get medical attention if irritation develops or persists.

INHALATION: If inhaled, remove to fresh air. If not breathing give artificial respiration or give oxygen by trained personnel. Seek medical attention immediately.

INGESTION: If swallowed, do NOT induce vomiting. Call a physician or a poison control center immediately. Never give anything by mouth to an unconscious person.

Spills

Contain and clean with appropriate absorbent materials.

Disposal

Dispose of in accordance with local, state or federal regulations.

Warning

KEEP CONTAINER CLOSED WHEN NOT IN USE. KEEP OUT OF THE REACH OF CHILDREN. NOT FOR INTERNAL CONSUMPTION. FOR INDUSTRIAL USE ONLY. Consult the Safety Data Sheet (SDS) for further health and safety information.

LIMITED WARRANTY

This product is subject to a written limited warranty. Refer to Decoplast Specifications for more complete information on proper use and handling of this product.



This product is intended for use by qualified professional contractors. All information conforms to the standard detail recommendations and specifications for the installation of Decoplast systems and is presented in good faith as of the date of publication of this document. GREENMAKER INDUSTRIES ASSUMES NO LIABILITY, EXPRESSED OR IMPLIED, AS TO THE WORKMANSHIP, ENGINEERING OR ARCHITECTURE OF ANY PROJECT. For more information regarding this product or additional Decoplast products, please contact a Decoplast Representative at (860) 761-2830 or visit our website www.Decoplast.com.

-5- YEAR_ LIMITED WARRANTY

Disclaimers and Limitations of Remedies

"Material"



Greenmaker Industries warrants to the below Owner that for the - 5 - year Warranty Period stated above and subject to the exceptions listed below, the " _____ " (the "system") described above, as properly applied by the Registered Applicator, will maintain its bond, be water resistant and will not peel, flake or chip. For any valid claim presented under this Warranty, Greenmaker Industries will supply Owner with replacement materials and labor required to Repair any non-conforming portions of the installed System. Any replacement materials provided hereunder will also be subjected to all the provisions of the Warranty during the Warranty Period shown above.

WARRANTIES DISCLAIMED – THE WARRANTY STATED IN THE PARAGRAPH ABOVE IS IN PLACE OF ALL OTHER WARRANTIES, EXPRESSED OR IMPLIED. GREENMAKER INDUSTRIES EXPRESSLY DISCLAIMS ANY OTHER WARRANTIES INCLUDING WARRANTIES OF MERCHANTABILITY AND FITNESS FOR A PARTICULAR PURPOSE. ALTHOUGH GREENMAKER INDUSTRIES MAY HAVE SUGGESTED THE MATERIAL OR DEVELOPED THE MATERIAL AT THE REQUEST OF THE GC, OWNER OR OWNERS REP, IT IS THE RESPONSIBILITY OF THE MANUFACTURER TO TEST AND DETERMINE THE SUITABILITY OF THE MATERIAL FOR THE INTENDED USE AND PURPOSE, AND THE APPLICATOR ASSUMES ALL RISK AND LIABILITY WHATSOEVER REGARDING SUCH SUITABILITY IF NOT INSTALLED AS PER MANUFACTURER SPECIFICATIONS.

LIMITATIONS OF REMEDIES AND DAMAGES – THE REPLACEMENT/REFUND REMEDY STATED IN THIS WARRANTY TAKES THE PLACE OF ALL OTHER REMEDIES AGAINST GREENMAKER INDUSTRIES AND IS THE ONLY REMEDY AGAINST DECOPLAST SYSTEMS, INC. AVAILABLE TO OWNER OR TO ANY OTHER PARTY, IN NO EVENT WILL GREENMAKER INDUSTRIES BE LIABLE FOR SPECIAL, INDIRECT, INCIDENTAL OR CONSEQUENTIAL DAMAGES (INCLUDING LOST PROFITS) ARISING OUT OF OR CONNECTED TO THE MATERIALS OR THE SYSTEM, OR TO ANY USE OR MISUSE OF THE MATERIALS OR THE SYSTEM, REGARDLESS OF ANY STRICT LIABILITY OR ACTIVE OR PASSIVE NEGLIGENCE OF GREENMAKER INDUSTRIES AND REGARDLESS OF THE LEGAL THEORY (CONTRACT, TORT OR OTHER) USED TO MAKE A CLAIM, IN NO EVENT WILL GREENMAKER INDUSTRIES BE OBLIGATED TO PAY DAMAGES IN ANY AMOUNT EXCEEDING THE ORIGINAL PRICE OF THE MATERIALS SHOWN TO BE DEFECTIVE. For customer relations purposes, Greenmaker industries may in its sole discretion choose to make some

efforts beyond its legal obligations. Such additional efforts will not in any way change the limitations of remedies and damages stated in this paragraph or extend or change this Warranty.

Exclusions: The warranty described above does not cover, and Greenmaker Industries will have no liability for any damage or failure of the System caused by or due to any of the following:



1. Lightning, earthquake, windstorm, hurricane, tornado, hail, fire, flood or other unusual phenomena of the elements or acts of nature.
2. Settlement, movement, deflection, warpage, distortion, displacement or any other failure of the substrate. Such failures are the sole responsibility of the substrate manufacturer.
3. Cracks, breaks or openings in the substrate to which the System is applied.
4. Surface alterations, additions, object placed or installations made on the finished surface.
5. Use of the finished surface as something other than an exterior wall (such as a recreational area or walking surface).
6. Penetration, vandalism, damage or attack by third parties and foreign objects or agents, including but not limited to chemicals, animals and plant life.
7. Discoloration or change in visual appearance due to accumulation or streaking of dirt or other airborne materials deposited on the surface from the atmosphere.
8. Sealant failure or water penetration due to leaks through windows, air conditioning units, holes, louvers, vents, or other non-System elements made part of a System installation.
9. Other (explain):

Furthermore, the warranty described above does not cover, and Greenmaker Industries will have no liability for, any repairs to the System or repaired portions of the System, except as set forth in the sections covering Repairs and Emergency Repairs, below.

Warranty Claims. Owner shall notify Greenmaker Industries immediately of any alleged defect in the materials covered by this Warranty. Owner will provide Greenmaker Industries with a reasonable opportunity to review and investigate the alleged defect. For any valid claim presented under the Warranty, Greenmaker Industries will provide the Owner with a remedy as described above. For any claim that is not valid, Owner will pay Greenmaker Industries reasonable charges, including travel and labor, associated with investigation of such claim.

Repairs. Any portions of the System either repaired by Greenmaker Industries or repaired by Applicator and approved in writing by Greenmaker industries will be subject to the terms of this Warranty for the remainder of the Warranty Period.

Emergency Repairs. If immediate and material damage to the building and its contents is imminent due to an alleged failure of the System, the Owner may, at its own expense, make such temporary repairs as may reasonable be required to prevent such damage. If Greenmaker Industries thereafter determines that the temporary repairs were necessitated by a failure of the System, Greenmaker Industries will provide a remedy as described above. If Greenmaker Industries determines that such emergency repairs were made in accordance with Greenmaker Industries standards, such repaired

portions will be subject to the terms of this Warranty for the remainder of the Warranty Period. If Greenmaker Industries determines that the temporary repairs were either not necessitated by a failure

of the System, or were not made in accordance with Greenmaker Industries standards, the warranty described in this Warranty will be null and void with respect to the repaired portions of the System. In no case will



Greenmaker Industries be held responsible for any damages done to the System by others in performing any repairs.

Voidability. The limited warranty contained herein will become null and void upon notice by Greenmaker Industries if:

1. Owner fails to provide prompt notification of any alleged defect in the System.
2. Owner denies Greenmaker Industries a reasonable opportunity to review and investigate an alleged failure of the System; or
3. Owner fails to pay when due the full contract price for the System and any other charges owing to Greenmaker Industries under the terms of this Warranty; provided, however, that all other terms of this limited warranty, including warranty disclaimers and limitations of remedies and damages, will remain in full force and effect despite such a nullification.

Assignability. The transfer of this Warranty to a new owner may be made only if acknowledged in writing by Greenmaker Industries to the new owner. Greenmaker Industries must be notified at the time of sale to the new owner, and Greenmaker Industries must be satisfied that the intended use of the structure by the new owner will not cause detriment to the System.

Validation. This Warranty is void unless signed by authorized representatives of Greenmaker Industries

Complete Agreement. This Warranty completely replaces and supersedes any prior oral or written warranties agreements or representations relative to the System, The System material or the application of such materials. No one other than an officer or general manager of Greenmaker Industries is authorized to change this Warranty or any of its provisions.

Owner: _____

Location: _____

Certified Applicator: _____

General Contractor: _____

Company Issuing Warranty: **Greenmaker Industries**

Project Size: _____ SFT System Installed: _____

Date Product Purchased: ___/___/___ thru: ___/___/___

Warranty Expiration Date: ___/___/___

Signature & Title: *Michael Jalbert* Technical Director Date: ___/___/___



697 Oakwood Avenue, West Hartford, CT 06110
voice: 860.761.2830 fax: 860.761.2831
www.decoplast.com