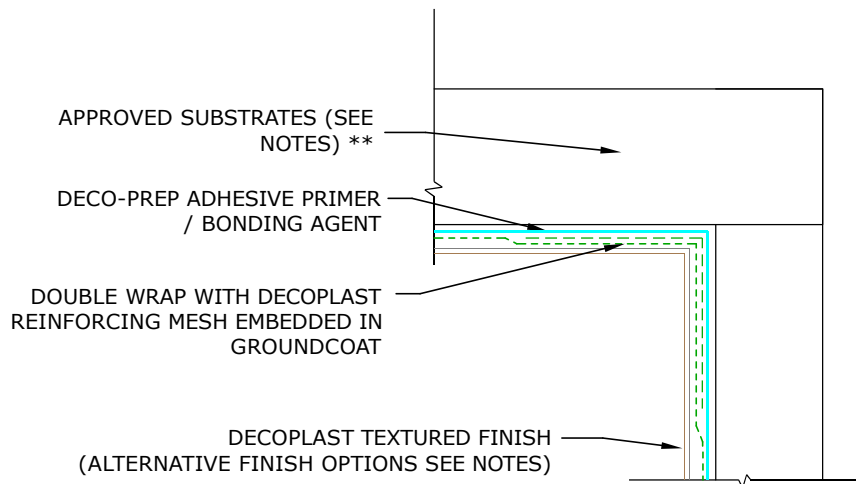


OUTSIDE CORNER



INSIDE CORNER

DDSG G1.03 GROUNDCOAT INSIDE AND OUTSIDE CORNERS

DECOPLAST DDARS NOTCHED - 6/1/2016

NOTE:

1. To ensure a continuous air barrier across the building envelope, a continuous air seal should be made at each substrate change, joints/gaps, penetrations and dissimilar material terminations. There must be consideration of the Designer in the overall wall assembly design.
2. Generally approved substrates include: Glass Mat Sheathing, Cement Board, Cement Stucco, CMU and Brick. Contact Decoplast Technical Service.
3. Optional textured finishes: Decolastic, Deco250 and DecoSil.

Disclaimer: The design, specifications, and construction shall comply with all local building codes and standards. Decoplast installation guidelines are for general information and guidance only and Decoplast specifically disclaims any liability for the use of this design, and for design, engineering, or workmanship of any project. The assembly shall be designed to prevent condensation within the assembly. The designer and the user shall provide final drawings and specifications. Products shown other than those manufactured by Decoplast are shown for clarity of the Decoplast product only. Contact the manufacturer of such other products for installation instructions.