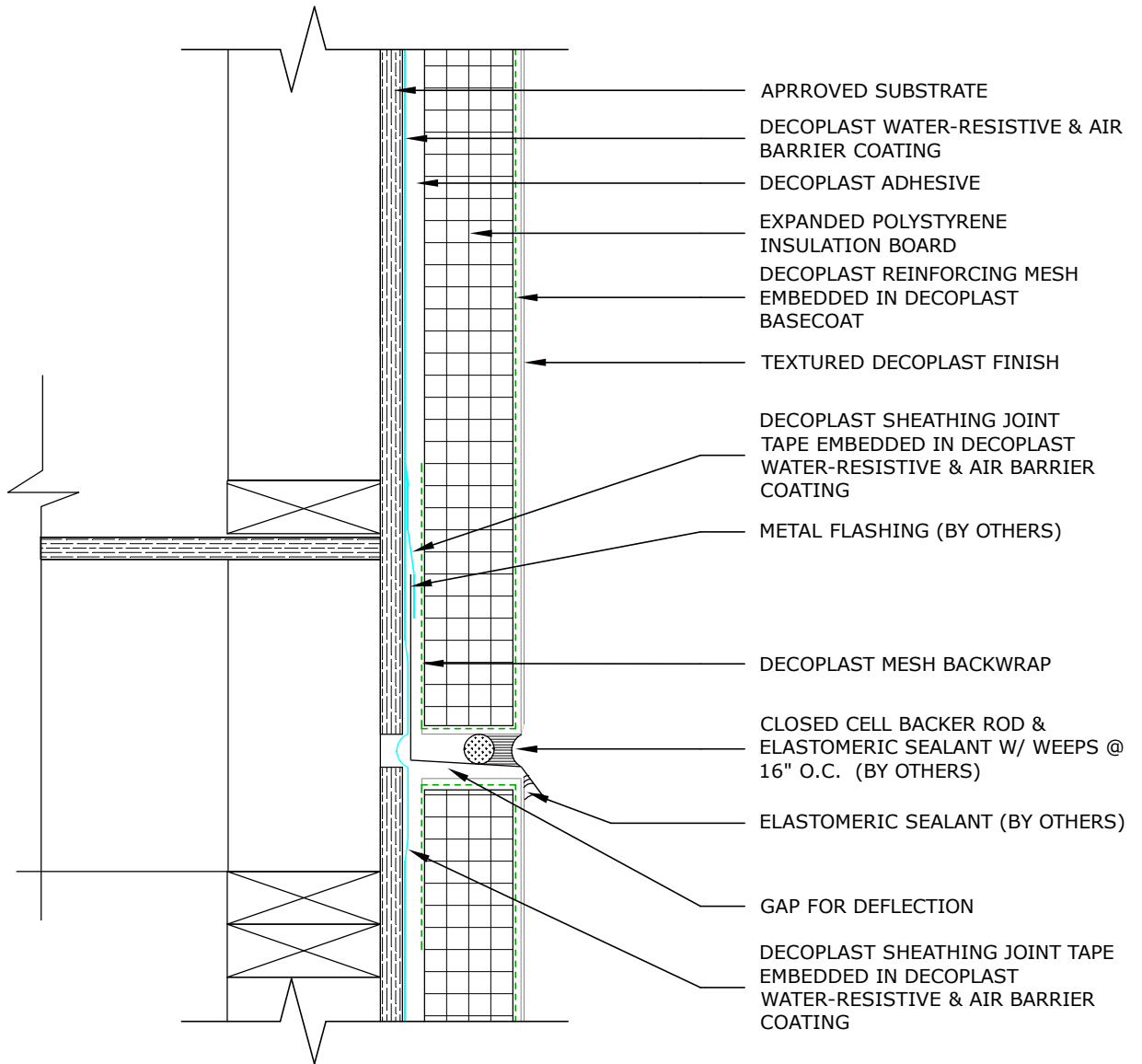




# DDARS NOTCHED



## DSWM E1.05A DDARS NOTCHED EXPANSION JOINT WITH FLASHING AT FLOOR

DECOPLAST DDARS NOTCHED - 6/1/2016

- NOTE:
1. To ensure a continuous air barrier across the building envelope, a continuous air seal should be made at each substrate change, joints/gaps, penetrations and dissimilar material terminations. These must be a consideration of the designer in the overall wall assembly design.
  2. Framing shown in this drawing is only conceptual and is not for construction. Follow framing designer's requirements.

Disclaimer: The design, specifications, and construction shall comply with all local building codes and standards. Decoplast installation guidelines are for general information and guidance only and Decoplast specifically disclaims any liability for the use of this design, and for design, engineering, or workmanship of any project. The assembly shall be designed to prevent condensation within the assembly. The designer and the user shall provide final drawings and specifications. Products shown other than those manufactured by Decoplast are shown for clarity of the Decoplast product only. Contact the manufacturer of such other products for installation instructions.