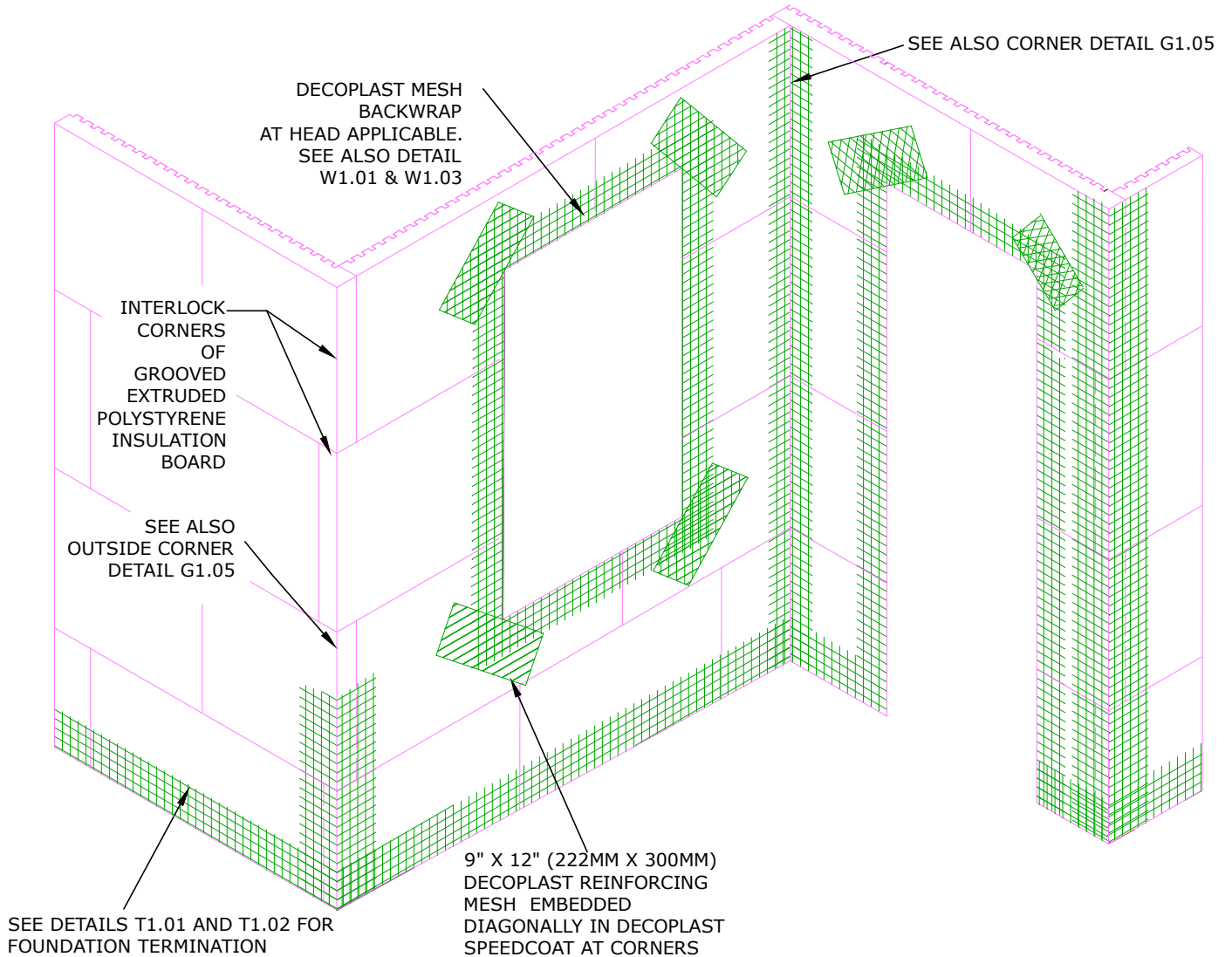




# DDARS SPEEDCOAT XPS ci



## DSWM G1.04 DDARS SPEEDCOAT XPS ci PRELIMINARY MESH APPLICATION

DECOPLAST DDARS SPEEDCOAT XPS ci - 6/1/2016

**NOTE:**

GROOVED EXTRUDED POLYSTYRENE INSULATION BOARD JOINTS ARE OFFSET FROM WITH CORNERS OF OPENINGS

Disclaimer: The design, specifications, and construction shall comply with all local building codes and standards. Decoplast installation guidelines are for general information and guidance only and Decoplast specifically disclaims any liability for the use of this design, and for design, engineering, or workmanship of any project. The assembly shall be designed to prevent condensation within the assembly. The designer and the user shall provide final drawings and specifications. Products shown other than those manufactured by Decoplast are shown for clarity of the Decoplast product only. Contact the manufacturer of such other products for installation instructions.