

9

09 97 23

Coatings for  
Concrete and Masonry

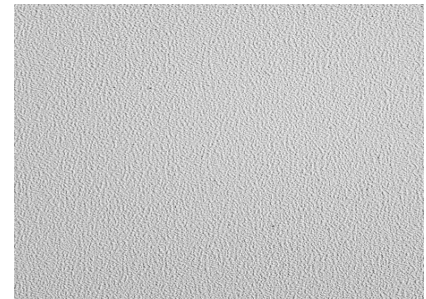


# DECOLOCK

Water-based, 100% acrylic protective and decorative waterproof coating

## PRODUCT HIGHLIGHTS

- Polymer Technology** 100% acrylic formulation that protects and waterproofs. Excellent adhesion, bonds securely to substrate for long-term durability.
- Integral Color** UV resistance provides excellent color retention for a long-lasting attractive finish.
- Weather Resistant** Repulsion of water and resistance to wind-driven rain.
- Vapor Permeable** Resists blistering, peeling, and flaking; Breathable to allow water vapor to escape.
- Three Textures** Available in Smooth, Fine and Medium textures.



*SMOOTH TEXTURE*



*FINE TEXTURE*



*MEDIUM TEXTURE*

## SUBSTRATES / USES

- ◆ Concrete
- ◆ Masonry
- ◆ Stucco
- ◆ Existing Coatings

## TECHNICAL DATA

REPORT	TEST METHOD	TEST CRITERIA	TEST RESULTS
<b>Water Vapor Permeance</b> (U.S. perms)	ASTM D-1653	ICC Vapor Permeable	Pass
<b>Accelerated Weathering</b>	ASTM G-23	2000 hours	No deleterious effects
<b>Freeze-thaw Resistance</b>	ASTM 2485	60 cycles	Pass

### PACKAGING

5 Gallon (19 L) 52.5 lb. (23.8 kg) Pails

### SHELF LIFE

24 months, if properly sealed and stored.

### STORAGE

Store in opened containers in a clean, dry area. Keep from freezing.



**SURFACE PREPARATION / MIXING / APPLICATION**

1. Surfaces should be clean, sound and free of all bond inhibiting contaminants.
2. Concrete substrates should be fully cured.
3. Loose or damaged material must be removed by water blasting, sandblasting or mechanical wire brushing and repaired.
4. Avoid application over irregular surfaces. Resurface, patch or level surfaces to required tolerance and smoothness with appropriate DecoLock leveling materials. Surface must be free of all releasing agents.
5. Check adhesion of old coatings according to ASTM D 3359, Adhesion Tape Method A.
6. Treat cracks greater than 1/32" with \_\_\_\_\_. Treat cracks larger than 1/4" as expansion joints and fill with compatible sealant.
7. Recommend that new CMU be parged or leveled with Greenmaker Base Coat.

**MIXING**

1. Prior to use, mix DecoLock at slow speed with a drill and mixing paddle to ensure uniform color and making sure to minimize air entrapment.
2. In multi pail applications, mix the contents of each new pail into the partially used previous pail to ensure color consistency and color uniform transitions from pail to pail.

**APPLICATION**

Apply only to sound and clean, dry, properly prepared surfaces.

DecoLock is meant to be applied as a two-coat system, achieving a total dry-film thickness (DFT) of 12–16 mils (0.3 mm–0.4 mm). Apply DecoLock by brush, spray, roller, or spray-and-backroll. Maintain proper uniform wet-film thickness (WFT) during application to ensure the performance characteristics desired. Always work to a natural break and maintain a wet edge during application. For uniformity of color and texture, application techniques must be consistent throughout the project.

**Roller**

Use a quality 3/8" – 1 - 1/4" nap roller cover. Completely saturate the roller and keep it loaded with the coating to build the required mils. Never dry roll. Cross roll, maintaining a wet edge, to achieve uniform thickness. Backroll in one direction for consistent appearance. Texture varies based on size of nap.

**Spray**

It is necessary to use a sprayer designed for the application of coatings that contain sand particles. Contact equipment manufacturer for further recommendations. Backrolling in one direction after spray application is recommended to achieve uniform texture and film thickness.

**HEALTH AND SAFETY**

**Health Precaution**

DecoLock is water-based. As with any chemical construction product, exercise care when handling.

**WARNING!**

Causes eye and skin irritation.

**Safety Precaution**

Wash hands thoroughly after handling. Wear protective gloves/protective clothing/eye protection/face protection.

**First Aid:**

**EYE CONTACT:** Immediately flush eyes with plenty of water for at least 15 to 20 minutes. Ensure adequate flushing of the eyes by separating the eye lids with fingers. Get immediate medical attention.

**SKIN CONTACT:** Immediately wash skin with plenty of soap and water for at least 15 to 20 minutes, while removing contaminated clothing and shoes. Get medical attention if irritation develops or persists.

**INHALATION:** If inhaled, remove to fresh air. If not breathing give artificial respiration or give oxygen by trained personnel. Seek medical attention immediately.

**INGESTION:** If swallowed, do NOT induce vomiting. Call a physician or a poison control center immediately. Never give anything by mouth to an unconscious person.

**Spills**

Contain and clean with appropriate absorbent materials.

**Disposal**

Dispose of in accordance with local, state or federal regulations.

**Warning**

KEEP CONTAINER CLOSED WHEN NOT IN USE. KEEP OUT OF THE REACH OF CHILDREN. NOT FOR INTERNAL CONSUMPTION. FOR INDUSTRIAL USE ONLY. Consult the Safety Data Sheet (SDS) for further health and safety information.



## DecoLock

### Spray

It is necessary to use a sprayer designed for the application of coatings that contain sand particles. Contact equipment manufacturer for further recommendations. Backrolling in one direction after spray application is recommended to achieve uniform texture and film thickness.

### Brush

Application by brush is recommended only for small inaccessible areas, e.g., on touch-ups. Use only a nylon brush.

### Curing/Drying Time

Times assume 70° F (21° C) and 50% relative humidity.

To touch: 1–2 hours

To recoat: minimum of 6 hours Lower surface or air temperatures and higher relative humidity will extend the drying time.

### Clean Up

Clean all tools and equipment immediately with water. Cured material may be removed by mechanical means.

### FOR BEST RESULTS and PERFORMANCE

1. Do not apply when substrate or ambient temperature is 40° F (4° C) or below or is expected to fall below this within 24 hours.
2. Do not apply if rain is expected within 24 hours of application.
3. DecoLock should not be used on weather-exposed horizontal or below grade surfaces or where immersion in water may occur.
4. Apply a 2' x 2' ft test area verify color acceptance or to test adhesion before proceeding with project. Test method ASTM D 3359 Tape Method A with an adhesion rating of 4A minimum.

### COVERAGE

650 - 800 ft<sup>2</sup> (60.3 - 74.3 m<sup>2</sup>) depending on the texture selected.

\*Coverages may vary depending on application technique and surface conditions. Contact Technical Service for additional information.

### LIMITED WARRANTY NOTICE

Greenmaker Industries LLC warrants this product to be free from manufacturing defects and that it meets the technical properties on this data sheet if it is used as directed within shelf life. Satisfactory results depend on more than a quality product but also upon many factors beyond our control. GREENMAKER INDUSTRIES MAKES NO OTHER WARRANTY OR GUARANTEE, EXPRESS OR IMPLIED, INCLUDING WARRANTIES OR FITNESS FOR A PARTICULAR PURPOSE WITH RESPECTS TO ITS PRODUCTS. The sole and exclusive remedy of Purchaser for any claim concerning this product, including but not limited to, claims alleging breach of warranty, negligence, strict liability or otherwise, is the replacement of product or the refund of the purchase price, at the sole option of Greenmaker Industries. Any claims concerning this product must be received in writing within one (1) year from the date of shipment and any claims not presented within that period are waived by Purchaser. GREENMAKER INDUSTRIES WILL NOT BE RESPONSIBLE FOR ANY SPECIAL, INCIDENTAL, CONSEQUENTIAL, (INCLUDING LOST PROFITS) OR PUNITIVE DAMAGES OF ANY KIND.

Purchaser must determine the suitability of the intended use and assumes all risks and liabilities in conjunction therewith. This information and any technical advice provided are based on Greenmaker Industries present knowledge and experience. However, Greenmaker Industries assumes no liability for providing such information and advice. Greenmaker Industries reserves the right to make any changes according to technology progress or development. The purchaser of the Product(s) must test the product(s) for suitability for the intended use.



697 Oakwood Avenue, West Hartford, CT 06110  
voice: 860.761.2830 fax: 860.761.2831  
www.decoplast.com