



# DECOPLAST PRODUCT SUBMITTAL

## DecoWall FRS Stucco

A traditional ASTM C 150 stucco system that consists of a controlled blend of Portland cement, fibers and additives suitable for use in residential and commercial applications.

Date:

**Project:**

**Location:**

**Architect:**

**General Contractor:**

**Applicator:**

### SYSTEM FEATURES

- Fiber reinforced for improved crack resistance and flexural strength
- Portland cement stucco base complies with ASTM C 150
- Multitude of aesthetic high performance, aesthetic options



## **DECOPLAST PRODUCT AND SYSTEM OVERVIEW**

Decoplast offers a wide variety of decorative and protective architectural coatings and EIFS systems that incorporate secondary weather protection and drainable performance features that allow architects and owners to meet today's building envelope energy, air, and water resistive barrier requirements.

Decowall FRS Stucco is a traditional stucco assembly that can be used on most substrates and includes a code approved water resistive barrier and lath. Decoplast components are an approved stucco base by others, primer, and finish coating.

## **QUALIFICATIONS STATEMENT**

Decoplast is pleased to provide the following qualification statement for your review. With industry building science expertise, and provision to offer superior products, warranty protection, service, support, and design guidance, Greenmaker Industries / Decoplast provides a single source for all your EIFS, Stucco, Masonry construction and Coating needs. We offer a full line of professional grade products that meet today's demanding energy, performance, and design requirements. From building envelope design to sustainable maintenance and restoration, Decoplast provides a smarter alternative.

- Over 30 Years manufacturing Architectural coatings and energy efficient wall systems.
- Defective Material and Labor Warranties
- Over 500 million SF of product sold and installed worldwide
- Miami Dade Code Compliant (NOA # 17-1227.12)
- FL Product Approval (FL16250-R2)
- AIA Continuing Education Provider # 40107627
- Texas Department of Insurance EC-79
- ICC ESR- 3428
- NFPA-285 Compliant
- NFPA-268 Compliant
- ASTM-E119 Compliant

## MANUFACTURING LOCATIONS

West Hartford, CT – Main Office	Ispica RG, Italy
Mableton, GA	Castelfranco Veneto, Italy

## Partial List of Complete Projects and Companies That Have Used Decoplast Wall Systems

### HOSPITALITY

- The Wynn Hotel and Casino - Las Vegas, NV (completed in 2007 /250,000 SF)
- Excalibur Hotel and Casino - Las Vegas, NV (completed in 2006)
- Sonesta Hotels and Condos - Sanibel Island, FL
- Hard Rock Hotel and Casino - Fort Lauderdale, FL (completed in 2004)
- Hilton Hotel Properties
  - Home 2 Suites (Gulfport, MS)
  - Home 2 Suites (Pensacola, FL)
  - Hampton Inn (Gulf Shores, AL)
  - Hampton Inn (Milwaukie, WI)
  - Hampton Inn (Gulfport, MS)
  - Hampton Inn (Bartonsville, PA)
  - Hampton Inn (Panama City, FL)
  - TRU Hotel (McDonough, GA)
- Walt Disney World – Orlando, FL (completed in 2001)
- Flamingo Hotel Casino - Las Vegas, NV (completed in 2002)
- Holiday Inn Express
- Hotel RIU Plaza - NY, NY
- Choice Hotels Group
- Marriott Hotel Group
  - Fairfield Inn (Plainville, CT)
  - Fairfield Inn (Brooklyn, NY)
  - Town Place Suites (Shalimar, FL)
  - Fairfield Inn (Atmor, AL)
  - Fairfield Inn (Saraland, AL)

- Fairfield Inn (Meridian, MS)
- Fairfield Inn (Gulfport, MS)

#### **COMMERCIAL / RETAIL / MIXED-USE—RESIDENTIAL / RESTAURANT**

- Conde Nast Building - Times Square, NY, NY (completed in 1997)
- Tiffany Company Store - Nationally Specified (85 Locations completed to date)
- Empire State Building (completed in 1984)
- Arizona Beverage Company Headquarters (completed in 2000)
- CVS Pharmacy - Nationally Specified (Over 250 stores completed to date)
- Old Navy
- Wendy's
- Anthropology Stores (Nationally Specified)
- Pottery Barn Stores (Nationally Specified)
- Altar'd State Retail Stores (Nationally Specified)
- McDonald's (Over 200 stores completed to date)
- Burger King (Over 125 stores completed to date)
- LA Fitness
- Dunkin Donuts
- Dunkin Donuts Stadium Hartford CT
- Shops @ Corpus - Corpus Christie, Texas
- Taco Bell
- O'Reilly Auto Parts
- Advance Auto Parts
- Auto Zone
- TJ Maxx
- Verizon Wireless
- Publix
- Petco
- Village at Yarrow Bay, Washington State (500,000 SF)



---

## **GOVERNMENTAL / CIVIC / EDUCATIONAL**

- Naval Air Station Patuxent River, MD
- UNLV Library and Dorms – Las Vegas, NV (completed in 1998)
- Yankee Stadium (completed in 2008)
- City Field (completed in 2008)
- CIA Building – Langley, VA (completed in 2005)
- American Consulate – Rome, Italy (completed 1985)
- Yale University - New Haven, CT (completed in 1995)
- MOMA Museum of Modern Art (1992 and expansion in 2003)
- Arthur Ash Tennis Stadium -Flushing Meadows, NY

## **CSI SECTION 09 24 00 – PORTLAND CEMENT PLASTER**

### ***Fiber Reinforced Stucco with Enhanced Crack Resistance (Optional)***

#### **SYSTEM OVERVIEW**

*The Decoplast Decowall Stucco Assembly, when installed over CMU, can be either direct applied or installed with lath as per this specification.*

*For direct application, See Decowall on CMU Stucco Assembly Specification. Additional information is also provided in Technical Bulletin*

*The Decoplast Decowall / Spec- Mix is qualified on fire rated and non-combustible construction. Specifics for these wall assemblies and allowable continuous insulation thickness are listed in the ICC Evaluation Report ESR 3018.*

#### **PART 1 - GENERAL**

##### **1.1 SECTION INCLUDES**

- A. Supply and installation of fiber reinforced, one-coat stucco assembly with optional enhanced crack resistance.

##### **1.2 RELATED SECTIONS**

- A. Section 03 30 00 - Cast-in-Place Concrete
- B. Section 04 20 00 - Unit Masonry
- C. Section 06 16 00 - Sheathing
- D. Section 07 25 00 - Weather Barriers
- E. Section 07 62 00 - Sheet Metal Flashing and Trim
- F. Section 07 90 00 - Joint Protection
- G. Section 08 50 00 - Windows
- H. Section 09 21 16 - Gypsum Board Assemblies

##### **1.3 REFERENCES**

- A. ASTM C144 Standard Specification for Aggregate for Masonry Mortar
- B. ASTM C578 Specification for Preformed, Cellular Polystyrene Thermal Insulation
- C. ASTM C847 Standard Specification for Metal Lath
- D. ASTM C897 Standard Specification for Aggregate for Job-Mixed Portland Cement-Based Plaster
- E. ASTM C926 Standard Specification for Application of Portland Cement-Based Plaster
- F. ASTM C933 Standard Specification for Welded Wire Lath
- G. ASTM C1032 Standard Specification for Woven Wire Plaster Base
- H. ASTM C1063 Standard Specification for Installation of Lathing and Furring for Portland Cement Based Plaster
- I. ASTM C1177 Specification for Glass Mat Gypsum for Use as Sheathing
- J. ASTM C1278 Specification for Fiber-Reinforced Gypsum Panel
- K. ASTM C1396 Standard Specification for Gypsum Board
- L. ASTM E84 Test Method for Surface Burning Characteristics of Building Materials
- M. ASTM E119 Method for Fire Tests of Building Construction and Materials
- N. ASTM E330 Test Method for Structural Performance of Windows, Curtain Walls, and Doors by Uniform Static Air Pressure Difference
- O. ASTM G153 Standard Practice for Operating Enclosed Carbon Arc Light Apparatus for Exposure of Nonmetallic Materials
- P. ICC AC 11 Acceptance Criteria for Cementitious Exterior Wall Coating

Q. ICC AC 219 Acceptance Criteria for Exterior Insulation and Finish Systems

**1.4 ASSEMBLY DESCRIPTION**

- [A. Decowall FRS Stucco Assembly: water resistive barrier sheet, wire fabric or metal lath, pre-mixed stucco base coat, and either an acrylic or elastomeric based finish coat.  
-OR-
- [B. Decowall FRS Stucco Assembly with Enhanced Crack Resistance: water resistive barrier sheet, wire fabric or metal lath, pre-mixed stucco base coat, fiberglass reinforcing mesh embedded in stucco leveling coat, and either an acrylic or elastomeric based finish coat.
- C. Stucco Functional Criteria:
  - 1. General: Stucco application shall be to vertical substrates or to substrates sloped for positive drainage. Substrates sloped for drainage shall have additional protection from weather exposure that might be harmful to coating performance.
  - 2. Testing to meet International Code Council Acceptance Criteria AC11.
  - 3. Performance Requirements of Coatings applied to Expanded Polystyrene features: Must comply with ASTM E 2568 or ICC Acceptance Criteria AC 219 for EIFS.
  - 4. Substrate materials and construction shall conform to the building code having jurisdiction.
  - 5. Substrates shall be sound, dry and free of dust, dirt, laitance, efflorescence and other harmful contaminants.
  - 6. Substrate Dimensional Tolerances: Flat with 1/4 in (6.4 mm) within any 10 ft (3 m) radius.
  - 7. Maximum deflection of substrate system under positive or negative design loads shall not exceed L/360 of span.
- D. Expansion and Control Joints: Continuous expansion and control joints shall be installed at locations in accordance with ASTM C1063 and ASTM C926.
  - 1. Substrate movement, and expansion and contraction of stucco and adjacent materials shall be taken into account in design of expansion joints, with proper consideration given to sealant properties, installation conditions, temperature range, coefficients of expansion of materials, joint width to depth ratios, and other material factors. Minimum width of expansion joints shall be as specified by the designer or shown on the project drawings.
  - 2. In accordance with ASTM C1063, expansion or control joints shall be installed in walls not more than 144 ft<sup>2</sup> (13.4 m<sup>2</sup>) in area, and not more than 100 ft<sup>2</sup> (9.3 m<sup>2</sup>) in area for all non-vertical applications. The distance between joints shall not exceed 18 ft (5.5 m) in either direction or a length-to-width ratio of 2-½ to 1.

**1.5 SUBMITTALS**

- A. General: Submit Samples, Evaluation Reports and manufacturer's product data sheets in accordance with Division 1 General Requirements Submittal Section.
- B. Samples: Submit samples for approval. Samples shall be of materials specified and of suitable size as required to accurately represent each color and texture used on project. Prepare each sample using same tools and techniques for actual project application. Maintain and make available, at job site, approved samples.
- C. Manufacturer's Warranty: Submit sample copies of Manufacturer's Warranty indicating Single Source Responsibility for stucco assembly materials.

**1.6 QUALITY ASSURANCE**

- A. Qualifications:
  - 1. Manufacturer: Shall have marketed stucco assemblies in United States for at least ten years and shall have completed projects of same general scope and complexity.
  - 2. Applicator: Shall be experienced and competent in installation of stucco materials, and shall provide evidence of a minimum of five years' experience in work similar to that required by this section.

## **1.7 DELIVERY, STORAGE, AND HANDLING**

- A. Delivery: Deliver stucco assembly materials in original packaging with manufacturer's identification.
- B. Storage: Store stucco assembly materials in a dry location, out of direct sunlight, off the ground, and protected from moisture.

## **1.8 SITE / ENVIRONMENTAL CONDITIONS**

- A. Substrate Temperature: Do not apply stucco assembly materials to substrates whose temperature are below 40°F (4°C) or contain frost or ice.
- B. Inclement Weather: Do not apply stucco assembly materials during inclement weather, unless appropriate protection is employed.
- C. Sunlight Exposure: Avoid, when possible, installation of the stucco assembly materials in direct sunlight. Application of finishes in direct sunlight in hot weather may adversely affect aesthetics.
- D. Do not apply stucco base coats or finishes if ambient temperature falls below 40°F (4°C) within 24 hours of application. Protect stucco materials from uneven and excessive evaporation during dry weather and strong blasts of dry air.
- E. Prior to installation, the substrate shall be inspected for surface contamination, or other conditions that may adversely affect the performance of the stucco assembly materials, and shall be free of residual moisture.

## **1.9 COORDINATION AND SCHEDULING**

- A. Coordination: Coordinate stucco assembly installation with other construction operations.

## **1.10 WARRANTY**

- A. Warranty: Upon request, at completion of installation, provide manufacturer's Standard Limited Warranty.

**EDITOR NOTE: SEE MANUFACTURER'S WARRANTY SCHEDULE FOR AVAILABLE STUCCO ASSEMBLY WARRANTIES.**

# **PART 2 - PRODUCTS**

## **2.1 MANUFACTURERS**

- A. Manufacturer, Basis of Design: DECOPLAST., 697 Oakwood Avenue, West Hartford, CT,06110  
Contact: Architectural Sales or Technical Support (860.761.2830).
- B. Components: Obtain components manufactured by DECOPLAST of Decowall FRS Stucco Assembly from authorized distributors. No substitutions or additions of other materials are permitted without prior written permission from DECOPLAST for this project.

## **2.2 MATERIALS**

**EDITOR NOTE: STUCCO BASE MAY BE APPLIED IN 2 PASSES UP TO AN APPROXIMATE THICKNESS OF BETWEEN 3/4 AND 7/8 INCHES. WHEN INSTALLED AT THIS THICKNESS IT MUST BE MOIST CURED IN ACCORDANCE WITH IBC OR IRC, AS APPLICABLE, FOR PORTLAND CEMENT PLASTER.**

- A. Decoplast Decowall Stucco Base (3/8 in – 1/2 in per coat):
  - [1. Decoplast Decowall Stucco Base Concentrate: Proprietary mixture of portland cement and proprietary ingredients mixed with clean, cool, potable water, and ASTM C897 or ASTM C144 sand added in the field.
  - OR-
  - [2. Decoplast Decowall Stucco Base Sanded: Proprietary mixture of portland cement, and proprietary ingredients mixed with clean, cool, and potable water in the field.

**EDITOR NOTE: MODIFY BELOW TO SUIT REQUIREMENTS. CHOOSE OPTIONAL ACRYLIC EMULSION FOR ENHANCED PERFORMANCE.**

- [B. Stucco Admix
  - 1. Decoplast DP600 Admix & Bonding Agent: 100% acrylic emulsion additive for portland

cement based products to enhance curing, adhesion, freeze-thaw resistance and workability and as an acrylic polymer bonding agent.

EDITOR NOTE: MODIFY BELOW TO SUIT REQUIREMENTS. CHOOSE LEVELING AND REINFORMING COAT (C.) FOR ENHANCED CRACK RESISTANCE.

[C. Leveling and Reinforcing Coat:

- [1. Decoplast Premium Basecoat: Copolymer based, factory blend of cement and proprietary ingredients requiring addition of water.
- [2. Decoplast Liquid Basecoat & Adhesive: 100% acrylic polymer base, requiring the addition of portland cement.
- [3. Decoplast Decolastic Ground Coat: Copolymer based, factory blend of cement and proprietary ingredients requiring addition of water and cement.
4. Decoplast Reinforcing Meshes:
  - [a. Decoplast Stucco Mesh: Weight 4.5 oz/yd<sup>2</sup> (153 g/m<sup>2</sup>) reinforcing mesh.
  - [b. Decoplast Standard Mesh: Weight 4.5 oz/yd<sup>2</sup> (153 g/m<sup>2</sup>) reinforcing mesh.
  - [c. Decoplast Intermediate Mesh: Weight 12 oz/yd<sup>2</sup> (407 g/m<sup>2</sup>) reinforcing mesh.

[D. Expanded Polystyrene Features over Stucco:

1. Adhesive and Base Coat:
  - [a. Decoplast Premium Dry Basecoat and Adhesive: Copolymer based, factory blend of cement and proprietary ingredients requiring addition of water.
  - [b. Decoplast Decolastic Ground Coat Base Coat & Adhesive Base Coat & Adhesive: 100% acrylic elastomeric polymer base, requiring the addition of portland cement.
  - [c. Decoplast Liquid Base Coat & Adhesive: 100% acrylic polymer base, requiring the addition of portland cement.
2. Insulation Board:
  - a. In compliance with manufacturer's requirements for Decoplast EIFS.
  - b. Produced and labeled under a third party quality program as required by applicable building code; and produced by a manufacturer approved by Decoplast.
  - c. Shall conform to ASTM C578, ASTM E2430 Type I, and the Decoplast specification for Molded Expanded Polystyrene Insulation board.
3. Reinforcing Mesh:
  - [a. Decoplast Standard Mesh: Weight 4.5 oz/yd<sup>2</sup> (153 g/m<sup>2</sup>) reinforcing mesh.
  - [b. Decoplast Short Detail Mesh: Reinforcing mesh used for back wrapping and details.

EDITOR NOTE: MODIFY BELOW TO SUIT REQUIREMENTS. CHOOSE PRIMER FOR MAXIMUM FINISH MATERIAL COVERAGE, AESTHETICS, AND EXTENDED WARRANTY.

[E. Primer:

- [1. Decoplast Primer: 100% acrylic based primer to prepare surfaces for acrylic or elastomeric Finish
- [2. Decoplast PrimerTex 1000 Alkali Resistant Primer.

EDITOR NOTE: MODIFY BELOW TO SUIT REQUIREMENTS. CHOOSE ONE FINISH TYPE, TEXTURE, & COLOR WITH ACCESSORY MATERIALS TO CREATE DESIRED EFFECT.

F. Finish:

- [1. Decoplast Decosil: 100% acrylic polymer based finish, enhanced DPR acrylic finish with hydrophobic and photocatalytic properties, repels water, reflects UV rays, and reduces smog particles near the finish surface. Finish type, texture and color as selected by Project Designer.
- [2. Decoplast Standard Finish: Factory blended, 100% acrylic polymer based finish, integrally colored. Finish type, texture and color as selected by Project Designer.

- [3. Decoplast Decolastic Finish: Factory blended, 100% acrylic polymer based elastomeric textured finish, integrally colored. Finish type, texture and color as selected by Project Designer

## 2.3 RELATED MATERIALS AND ACCESSORIES

- A. General: Stucco assembly materials and related materials.
- B. Substrate Materials:
  - [1. Gypsum Sheathing: Minimum 1/2 in (13 mm) thick, core-treated, weather-resistant, exterior gypsum sheathing complying with ASTM C79 or ASTM C1177.
  - [2. Cement Board Sheathing, Minimum 1/2 in thick, conforming to ASTM C1186.
  - [3. Fiberboard: Minimum 1/2 in (13 mm) thick fiberboard complying with ANSI/AHA A194.1 as a regular density sheathing.
  - [4. Plywood: Minimum 5/16 in (8 mm) thick exterior grade or Exposure I plywood for studs spaced 16 in (406 mm) o.c. and 3/8 in (9 mm) thick exterior type plywood minimum for studs spaced 24 in (610 mm) o.c. Plywood shall comply be exterior grade or Exposure 1 and comply with DOC PS-1.
  - [5. Oriented Strand Board (OSB): 7/16 -1/2 in Wall-16 or Wall-24, approved by the APA, TECO, or PSI/PTL. Stamped as Exposure 1 or Exterior Sheathing with a PS2 or PRP-108 rating. For OSB limitations on See Decoplast Technical Bulletin; EIFS and Stucco; Acceptable Substrates and Areas of Use.
  - [6. Concrete Masonry Construction: Painted (coated) and non-painted (uncoated). Shall be in conformance with the building code.
  - [7. Other Approved by stucco assembly manufacturer in writing prior to the project.
- C. Water-Resistive Barriers:
  - [1. For non-wood based sheathing shall be either:
    - [a. 1 layer asphalt-saturated felt complying with ASTM D 226 Type I.
    - [b. Lath with appropriate paper backing.
    - [c. Other recognized equivalent.
  - [2. For wood based sheathing shall be either:
    - [a. 2 layers of Grade D asphalt saturated Kraft building paper, or 1 layer of the Kraft building paper plus paper backed lath.
    - [b. Other recognized equivalent.
  - [3. Open Framing:
    - [a. 1 layer Grade D asphalt saturated Kraft building paper.
    - [b. 1 layer asphalt-saturated felt complying with ASTM D 226 Type I.
    - [c. Other recognized equivalent.

EDITOR NOTE: FOR THE USE OF CONTINUOUS INSULATION AND REQUIRED DRAINAGE FOLLOW THE DECOWALL SPECIFICATIONS.

EDITOR NOTE: THE SELECTION OF AN APPROPRIATE TYPE OF MATERIAL FOR LATH AND ACCESSORIES SHALL BE DETERMINED BY APPLICABLE SURROUNDING CLIMATIC AND ENVIRONMENTAL CONDITIONS SPECIFIC TO THE PROJECT LOCATION, SUCH AS SALT AIR, INDUSTRIAL POLLUTION, HIGH MOISTURE, OR HUMIDITY.

- D. Lath and Accessories: Conform to ASTM C847, ASTM C933, ASTM C1032, ASTM C1063 and Appendix.
  - 1. Accessories: Manufacturer's standard steel products with minimum G60 galvanizing unless otherwise indicated as rigid polyvinyl chloride (PVC plastic) or zinc alloy.

EDITOR NOTE: SELECT LATH TYPE AND WEIGHT.



2. Metal Plaster Bases: Minimum 17 gauge self-furred stucco netting, minimum 2.5 lb/yd<sup>2</sup> (1.4 kg/m<sup>2</sup>) or 3.4 lb/yd<sup>2</sup> (1.8 kg/m<sup>2</sup>) expanded metal diamond lath, or welded wire lath in accordance with applicable codes and standards.
3. Weep Screeds: Foundation weep screed with minimum 3-1/2 inch vertical attachment flange.

EDITOR NOTE: THE SELECTION AND USE OF AN APPROPRIATE TYPE OF SEALANT SHALL BE DETERMINED BY APPLICABLE SURROUNDING CLIMATIC AND ENVIRONMENTAL CONDITIONS SPECIFIC TO THE PROJECT LOCATION.

- E. Seals, Sealants and Bond Breakers: Sealants shall conform to ASTM C 920, Grade NS, Class 25, Use NT. Backer rod shall be closed-cell polyethylene foam.

## **PART 3 - EXECUTION**

### **3.1 EXAMINATION**

- A. Verify project site conditions under provisions of Section 01 00 00.
- B. Compliance: Comply with manufacturer's instructions for installation of stucco assembly materials.

REMINDER: STUCCO ASSEMBLY MUST BE INSTALLED OVER A CODE COMPLYING WATER RESISTIVE BARRIER OR SOLID SURFACE OR MASONRY OR CONCRETE. WALL PERFORMANCE IS DEPENDENT UPON, AMONG OTHER FACTORS, PROPER FLASHING AND JOINT SEALING, AND ATTENTION TO PROPER FLASHING AND JOINT SEALANT DETAILS INDICATED ON DRAWINGS.

- C. Substrate Examination: Examine prior to stucco base installation as follows:
  1. Substrate shall be of a type approved by stucco assembly manufacturer and the building code having jurisdiction. Plywood and OSB substrates shall be gapped 1/8 in (3.2 mm) at all edges.
  2. Substrate shall be examined for soundness, and other harmful conditions.
  3. Substrate shall be free of dust, dirt, laitance, efflorescence, and other harmful contaminants.
  4. Substrate construction in accordance with substrate material manufacturer's specifications and applicable building codes.
- D. Advise Contractor of discrepancies preventing proper installation of stucco assembly. Do not proceed with the stucco assembly work until unsatisfactory conditions are corrected.

### **3.2 PREPARATION**

- A. Water-Resistive Barrier:
  1. The water-resistive barrier is placed over all substrates except concrete or unpainted masonry. Painted (coated) CMU is to use a bond breaker such as asphalt paper and lath if the paint or coating cannot be removed.
  2. Installed according to manufacturer's instructions.

IMPORTANT EDITOR NOTE: COORDINATE TERMINATIONS OF STUCCO ACCESSORIES WITH SEALANT SECTION OF THE SPECIFICATION IN ORDER TO LEAVE REQUIRED SPACINGS FOR SPECIFIED JOINT DIMENSIONS.

- B. Wire Fabric Lath and Metal Lath: Install according to manufacturer's specifications

FOR DIRECT APPLICATION TO CONCRETE OR MASONRY, SEE DECOWALL FRS ON CMU STUCCO ASSEMBLY SPECIFICATION.

- C. Concrete (Cast-in-Place): Provide a surface that is straight and true to line and plane. Remove form ties and trim projecting concrete so it is even with the plane of the wall. Remove form release agents.
- D. Concrete Masonry Units: Remove projecting joint mortar so it is even with the plane of the wall.
- E. Ensure that metal flashing has been installed per Specification Section 07 60 00 - Flashing and Sheet Metal.

### **3.3 MIXING**

- A. Mix proprietary products in accordance with manufacturer's instructions, including the applicable stucco assembly product data sheets and application guidelines.
- [B. Admix: Decoplast ACRYL DP600
  - 1. For cement base coats, Portland cement stucco and plaster, 1 part by volume admixture with 3 parts clean potable water.

### 3.4 APPLICATION

- A. General: Stucco assembly and its related materials shall conform to the current Decoplast Stucco Application Guide.
- B. Bonding Agent: If required use Decoplast ACRYL DP600 straight for use between cementitious coats.
  - 1. Apply using a low-pressure sprayer brush- or roller.
  - 2. Stucco finishes or other cement products can still be applied after Bonding Agent becomes tacky up to 72 hours after application, but not while wet.
- C. Stucco Base:
  - 1. DECOWALL FRS Stucco mixtures shall be applied in one or two coats to a minimum thickness of 3/8 in (9.5 mm) per coat by hand troweling or machine spraying the mixture to the wire lath in accordance with manufacturer's product data sheets and application guidelines. The maximum thickness applied in one pass is 1/2 in (17 mm).
  - 2. Rod surface to true plane and float to densify.
  - 3. Trowel to smooth and uniform surface to receive acrylic or elastomeric finish coat.

EDITOR NOTE: MODIFY BELOW TO SUIT REQUIREMENTS. CHOOSE LEVELING AND REINFORCING COAT (D.) FOR ENHANCED CRACK RESISTANCE.

- [D. Leveling and Reinforcing Coat:
  - 1. After Moist Curing, allow stucco base coat to air dry a minimum of 24 hours before applying the leveling and reinforcing coat.
  - 2. Using a stainless steel trowel, apply the stucco leveling coat over the stucco base coat at a thickness of 1/16 to 3/32 in (1.6 – 2.4 mm).
  - 3. Fully embed reinforcing mesh, either Stucco Mesh, Standard Mesh or Intermediate Mesh, into wet stucco level coat, including diagonal strips at corners of openings and trowel smooth. If Stucco Mesh or Standard Mesh is used, seams are overlapped 2-1/2 in (63 mm); if Intermediate Mesh is used, seams are butted and covered by strips of Detail Mesh.
  - 4. The acrylic primers and finishes can be applied as soon as the stucco leveling coat has dried, typically within 24 hours.
- [E. Expanded Polystyrene Featured over Stucco Base Coat:
  - 1. Install back-wrap mesh at EPS terminations.
  - 2. Apply adhesive to backs of insulation boards with a notched trowel. Allow to dry a minimum of 12 hours.
  - 3. Apply base coat material to the entire foam shape and pull the backwrap mesh around the foam shapes and fully embed it into the base coat.
  - 4. Immediately embed the reinforcing mesh in the wet base coat.
- F. Primer and Finish:
  - 1. Remove surface contaminants such as dust or dirt without damaging the substrate.
  - 2. Ambient and surface temperature must be 40°F (4°C) or higher during application and drying



time. Supplemental heat and protection from precipitation must be provided as needed.

3. Use only on surfaces that are sound, clean, dry, unpainted, and free from any residue that might affect the ability of the finish to bond to the surface.

**EDITOR NOTE: MODIFY BELOW TO SUIT REQUIREMENTS. CHOOSE ONE #4 OR #5.**

- [4. Decoplast Decowall FRS Stucco Assembly with Crack Lamina Design
  - a. Before the application of the finish, the base coat must have cured a minimum of 24 hours or longer as required by conditions. Examine the cured base coat for any irregularities.
  - b. Correct these irregularities to produce a flat surface.-OR-

- [5. Decoplast Decowall FRS Stucco Assembly:
  - a. After moist curing, allow the stucco base to air dry in accordance with Stucco Application Guide depending on type of finish coat and primer.
6. Apply primer as directed in manufacturer's product data sheet and application guide.
7. Apply exterior wall finish in number of coats thickness recommended by manufacturer to achieve texture indicated, using sufficient trowel pressure or spray velocity to bond finish to base coat.
8. Protect finish coats from inclement weather until completely dry.

**G. Curing:**

1. Keep stucco base coat moist for at least 48 hours (longer in dry weather) by lightly fogging walls. Start light fogging after initial set of 1–2 hours.
2. Air dry acrylic based and elastomeric finish coats only, do not wet cure.

**3.5 CLEAN-UP**

- A. Removal: Remove and legally dispose of stucco component debris material from job site.

**3.6 PROTECTION**

- A. Provide protection of installed materials from water infiltration into or behind them.
- B. Provide protection of installed stucco from dust, dirt, precipitation, and freezing during installation.
- C. Provide protection of installed finish from dust, dirt, precipitation, freezing, and continuous high humidity until fully dry.
- D. Clean exposed surfaces using materials and methods recommended by the manufacturer of the material or product being cleaned. Remove and replace work that cannot be cleaned to the satisfaction of the Designer/Owner.

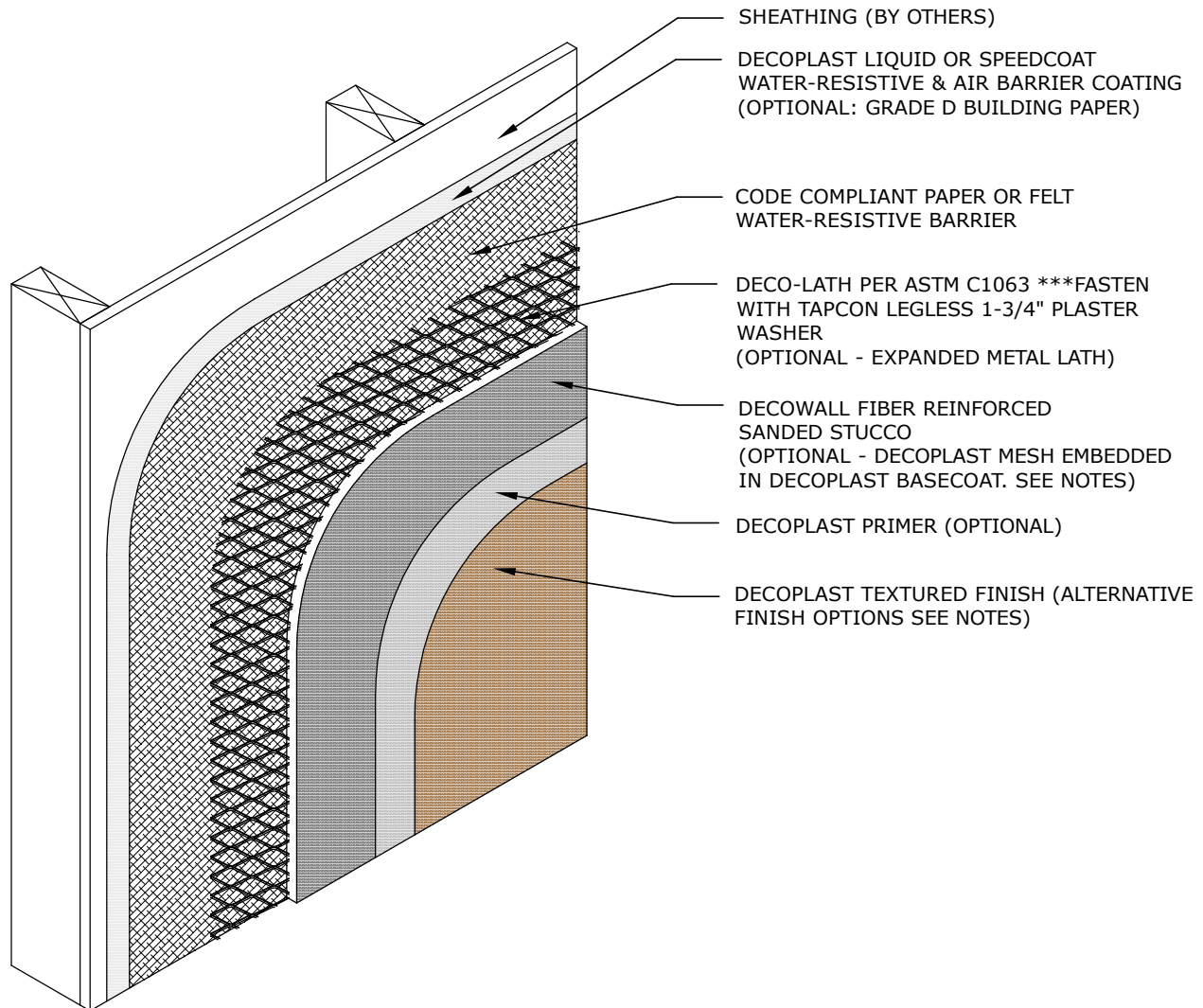
**END OF SECTION**

*Rev. July. 2021*

*Disclaimer: This guide specification is intended for use by a qualified designer. The guide specification is not intended to be used verbatim as an actual specification without appropriate modifications for the specific use intended. The guide specification must be integrated into and coordinated with the procedures of each design firm, and the requirements of a specific project. For additional assistance, contact DECOPLAST Technical Support (860.761.2830).*



# DECOWALL FRS



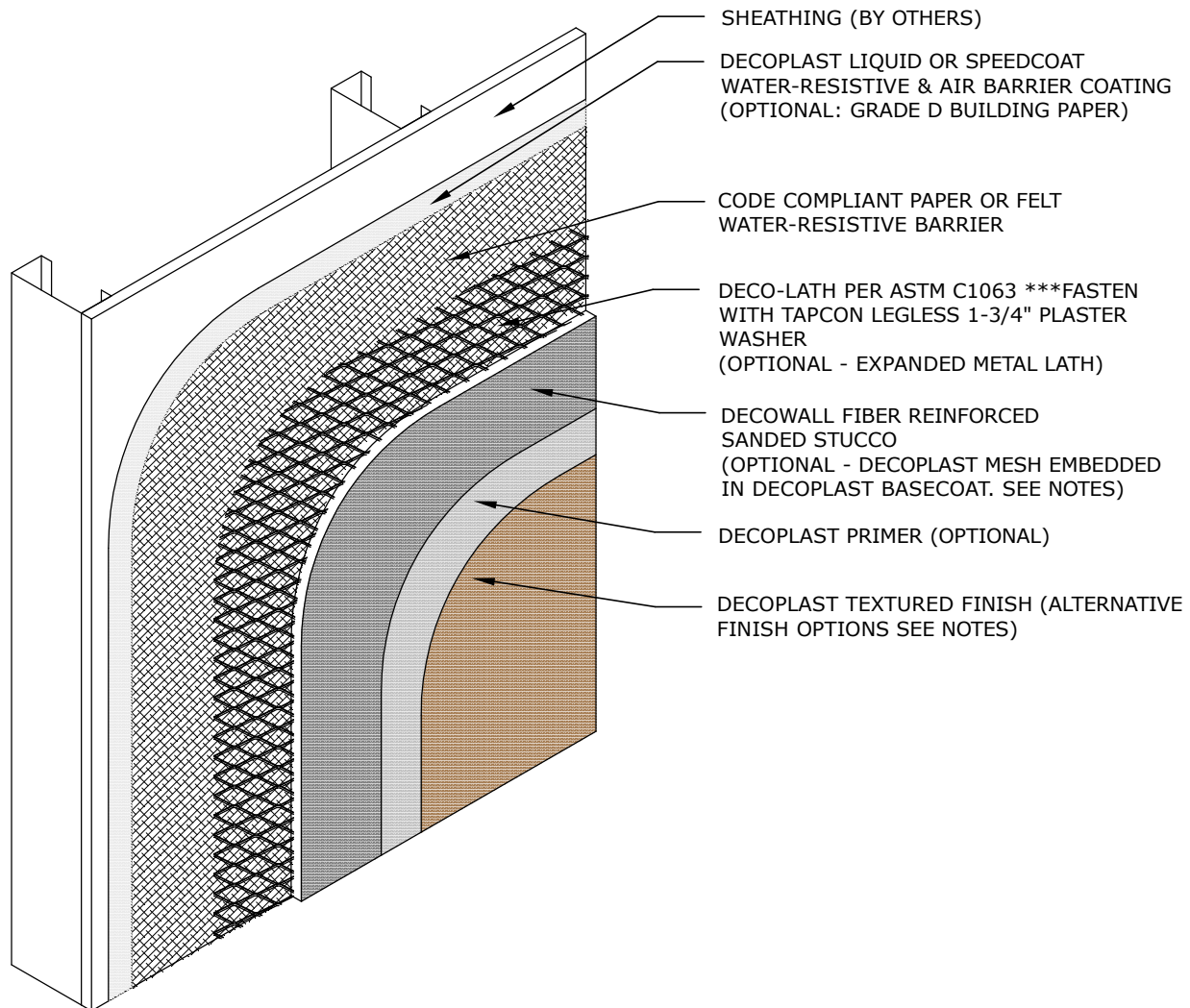
## DG1.01 DECOWALL FRS STUCCO ASSEMBLY / WOOD FRAME

DECOPLAST DECOWALL FRS - 6/1/2016

### NOTE:

1. Stucco Claddings and any cladding using a mortar bed requires the use of a slipsheet installed over the Water-Resistive & Air Barrier Coating to prevent adhesion of the stucco.
2. Refer to Decoplast specifications specified basecoat product & thickness
3. Optional Decoplast Mesh embedded in Decoplast Basecoat may be applied over DECOWALL Fiber Reinforced Sanded Stucco to help bridge spidering.
4. Optional textured finishes: Decolastic, Deco250 and DecoSil.

Disclaimer: The design, specifications, and construction shall comply with all local building codes and standards. Decoplast installation guidelines are for general information and guidance only and Decoplast specifically disclaims any liability for the use of this design, and for design, engineering, or workmanship of any project. The assembly shall be designed to prevent condensation within the assembly. The designer and the user shall provide final drawings and specifications. Products shown other than those manufactured by Decoplast are shown for clarity of the Decoplast product only. Contact the manufacturer of such other products for installation instructions.



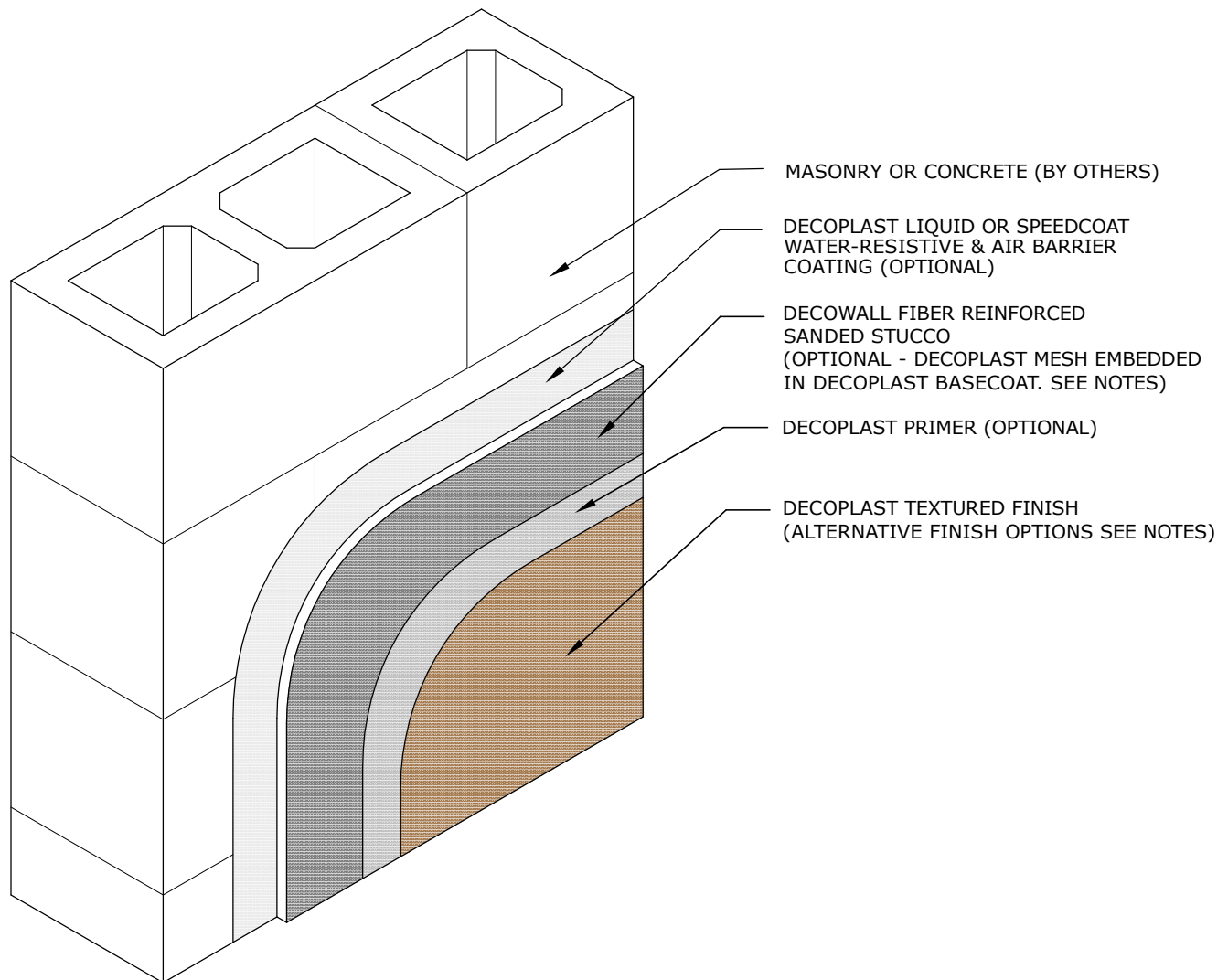
## DG1.06 DECOWALL FRS ASSEMBLY / STEEL FRAME

DECOPLAST DECOWALL FRS - 6/1/2016

### NOTE:

1. Stucco Claddings and any cladding using a mortar bed requires the use of a slipsheet installed over the Water-Resistive & Air Barrier Coating to prevent adhesion of the stucco.
2. Refer to Decoplast specifications specified basecoat product & thickness
3. Optional Decoplast Mesh embedded in Decoplast Basecoat may be applied over DECOWALL Fiber Reinforced Sanded Stucco to help bridge spidering.
4. Optional textured finishes: Decolastic, Deco250 and DecoSil.

Disclaimer: The design, specifications, and construction shall comply with all local building codes and standards. Decoplast installation guidelines are for general information and guidance only and Decoplast specifically disclaims any liability for the use of this design, and for design, engineering, or workmanship of any project. The assembly shall be designed to prevent condensation within the assembly. The designer and the user shall provide final drawings and specifications. Products shown other than those manufactured by Decoplast are shown for clarity of the Decoplast product only. Contact the manufacturer of such other products for installation instructions.



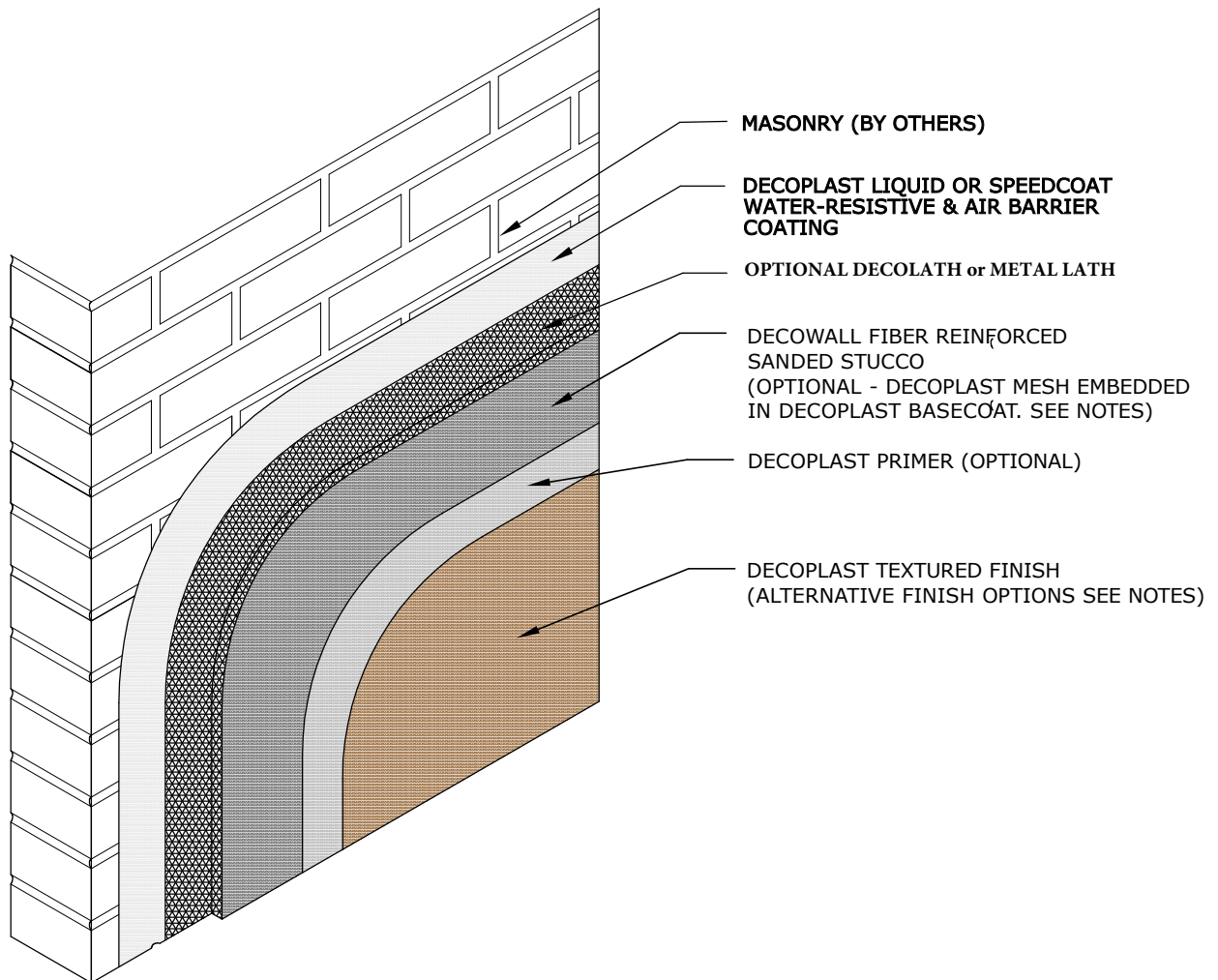
## DG1.10A DECOWALL FRS ASSEMBLY / CMU

DECOPLAST DECOWALL FRS - 6/1/2016

### NOTE:

1. Refer to Decoplast specifications specified basecoat product & thickness
2. Optional Decoplast Mesh embedded in Decoplast Basecoat may be applied over DECOWALL Fiber Reinforced Sanded Stucco to help bridge spidering.
3. Optional textured finishes: Decolastic, Deco250 and DecoSil.

Disclaimer: The design, specifications, and construction shall comply with all local building codes and standards. Decoplast installation guidelines are for general information and guidance only and Decoplast specifically disclaims any liability for the use of this design, and for design, engineering, or workmanship of any project. The assembly shall be designed to prevent condensation within the assembly. The designer and the user shall provide final drawings and specifications. Products shown other than those manufactured by Decoplast are shown for clarity of the Decoplast product only. Contact the manufacturer of such other products for installation instructions.



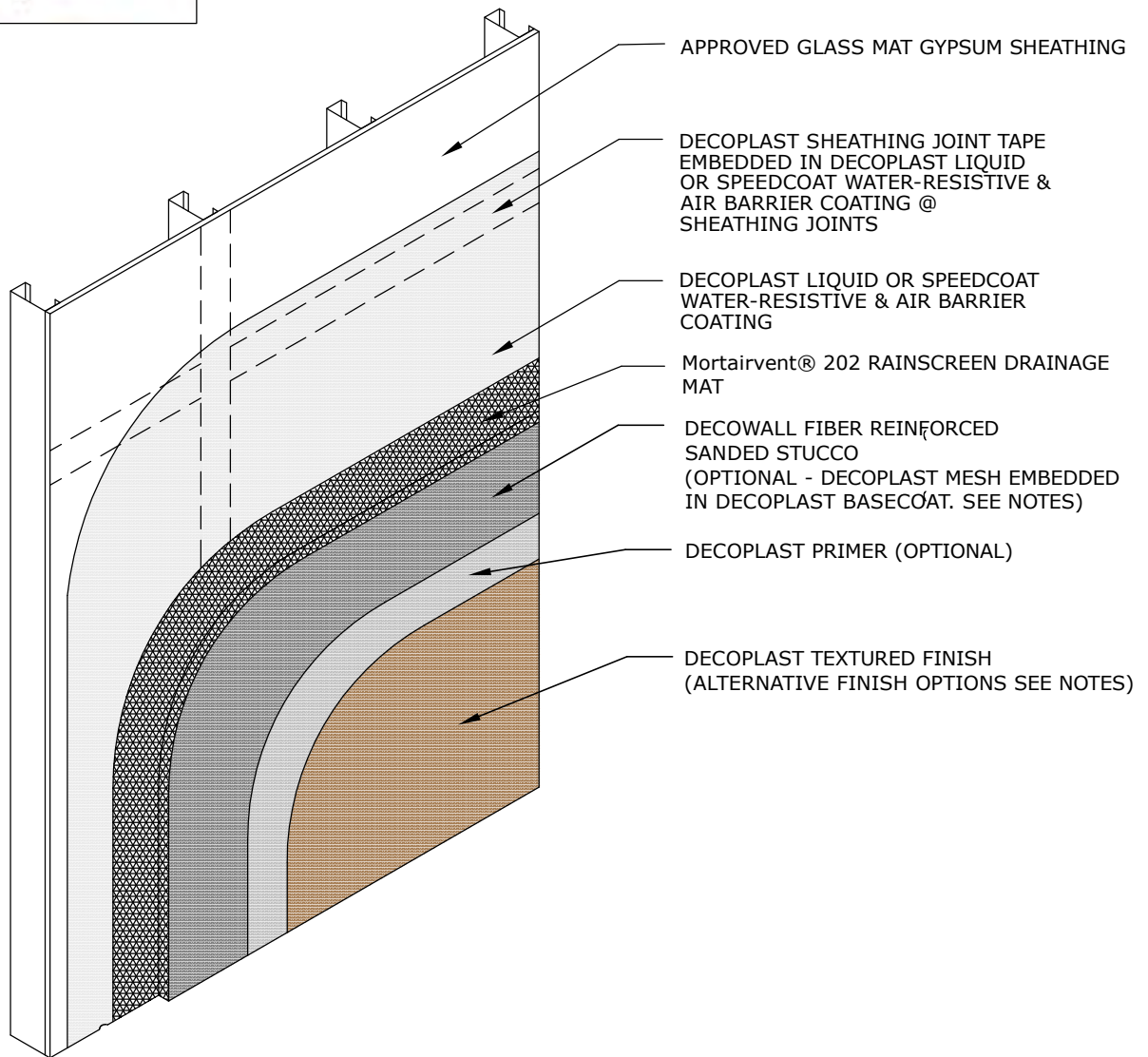
## DG1.10B DECOWALL FRS ASSEMBLY / BRICK MASONRY WITH DRAINAGE MAT

DECOPLAST DECOWALL FRS - 6/1/2016

### NOTE:

1. Refer to Decoplast specifications specified basecoat product & thickness
2. Optional Decoplast Mesh embedded in Decoplast Basecoat may be applied over DECOWALL Fiber Reinforced Sanded Stucco to help bridge spidering.
3. Optional textured finishes: Decolastic, Deco250 and DecoSil.

**Disclaimer:** The design, specifications, and construction shall comply with all local building codes and standards. Decoplast installation guidelines are for general information and guidance only and Decoplast specifically disclaims any liability for the use of this design, and for design, engineering, or workmanship of any project. The assembly shall be designed to prevent condensation within the assembly. The designer and the user shall provide final drawings and specifications. Products shown other than those manufactured by Decoplast are shown for clarity of the Decoplast product only. Contact the manufacturer of such other products for installation instructions.



## DG1.10C DECOWALL FRS ASSEMBLY / STEEL STUD - GLASS MAT GYPSUM SHEATHING WITH DRAINAGE MAT

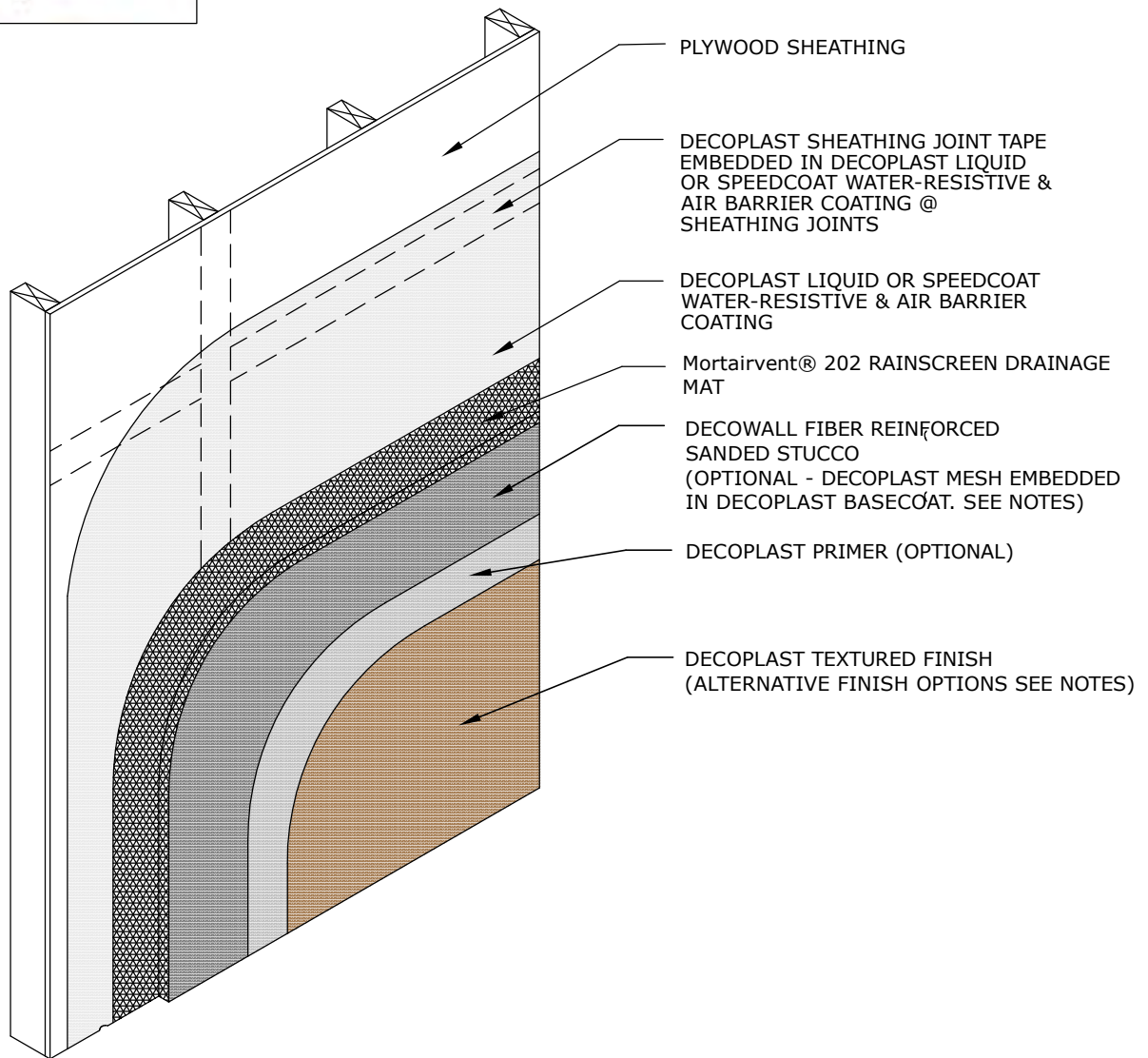
DECOPLAST DECOWALL FRS - 6/1/2016

### NOTE:

1. Refer to Decoplast specifications specified basecoat product & thickness
2. Optional Decoplast Mesh embedded in Decoplast Basecoat may be applied over DECOWALL Fiber Reinforced Sanded Stucco to help bridge spidering.
3. Optional textured finishes: Decolastic, Deco250 and DecoSil.

Disclaimer: The design, specifications, and construction shall comply with all local building codes and standards. Decoplast installation guidelines are for general information and guidance only and Decoplast specifically disclaims any liability for the use of this design, and for design, engineering, or workmanship of any project. The assembly shall be designed to prevent condensation within the assembly. The designer and the user shall provide final drawings and specifications. Products shown other than those manufactured by Decoplast are shown for clarity of the Decoplast product only. Contact the manufacturer of such other products for installation instructions.





## DG1.10D DECOWALL FRS ASSEMBLY / WOOD FRAME - SHEATHING WITH DRAINAGE MAT

DECOPLAST DECOWALL FRS - 6/1/2016

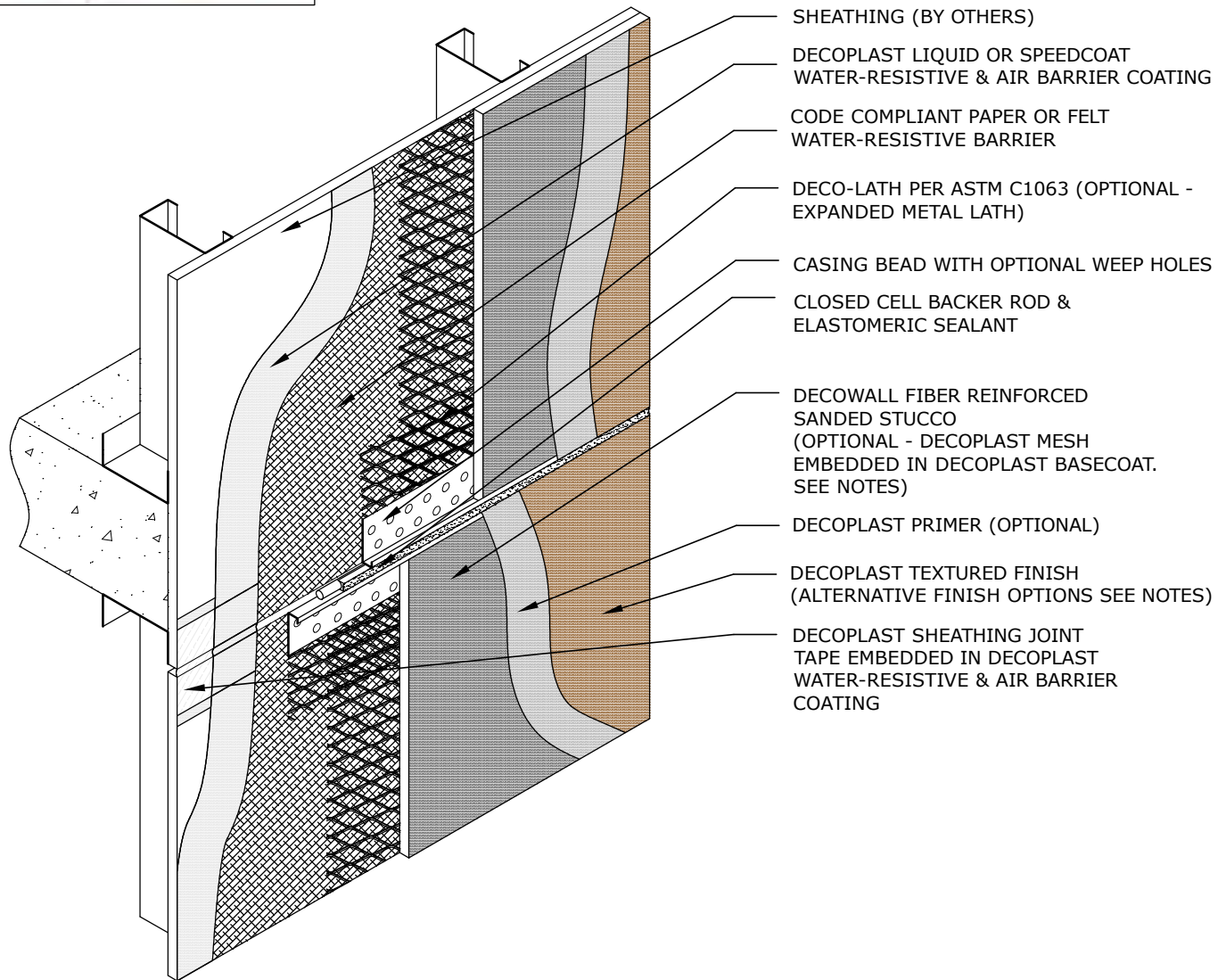
### NOTE:

1. Refer to Decoplast specifications specified basecoat product & thickness
2. Optional Decoplast Mesh embedded in Decoplast Basecoat may be applied over DECOWALL Fiber Reinforced Sanded Stucco to help bridge spidering.
3. Optional textured finishes: Decolastic, Deco250 and DecoSil.

Disclaimer: The design, specifications, and construction shall comply with all local building codes and standards. Decoplast installation guidelines are for general information and guidance only and Decoplast specifically disclaims any liability for the use of this design, and for design, engineering, or workmanship of any project. The assembly shall be designed to prevent condensation within the assembly. The designer and the user shall provide final drawings and specifications. Products shown other than those manufactured by Decoplast are shown for clarity of the Decoplast product only. Contact the manufacturer of such other products for installation instructions.



## DECOWALL FRS



### DE1.01A DECOWALL FRS EXPANSION JOINT

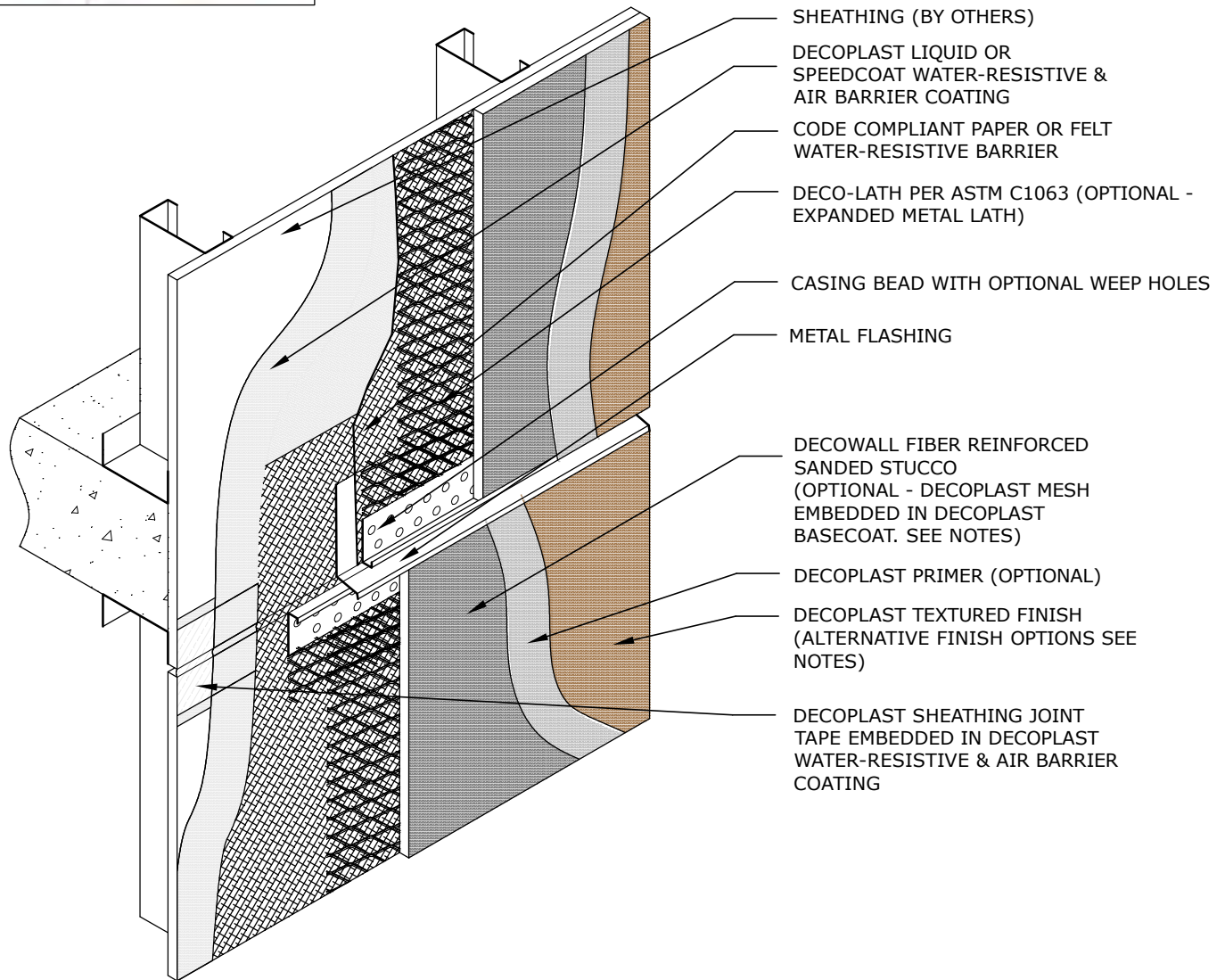
DECOPLAST DECOWALL FRS 6/1/2016

**NOTE:**

1. To ensure a continuous air barrier across the building envelope, a continuous air seal should be made at each substrate change, joints/gaps, penetrations and dissimilar material terminations. There must be consideration of the Designer in the overall wall assembly design.
2. Stucco Claddings and any cladding using a mortar bed requires the use of a slipsheet installed over the Water-Resistive & Air Barrier Coating to prevent adhesion of the stucco.
3. Refer to Decoplast specifications specified basecoat product & thickness
4. Optional Decoplast Mesh embedded in Decoplast Basecoat may be applied over DECOWALL Fiber Reinforced Sanded Stucco to help bridge spidering.
5. Optional textured finishes: Decolastic, Deco250 and DecoSil.

Disclaimer: The design, specifications, and construction shall comply with all local building codes and standards. Decoplast installation guidelines are for general information and guidance only and Decoplast specifically disclaims any liability for the use of this design, and for design, engineering, or workmanship of any project. The assembly shall be designed to prevent condensation within the assembly. The designer and the user shall provide final drawings and specifications. Products shown other than those manufactured by Decoplast are shown for clarity of the Decoplast product only. Contact the manufacturer of such other products for installation instructions.





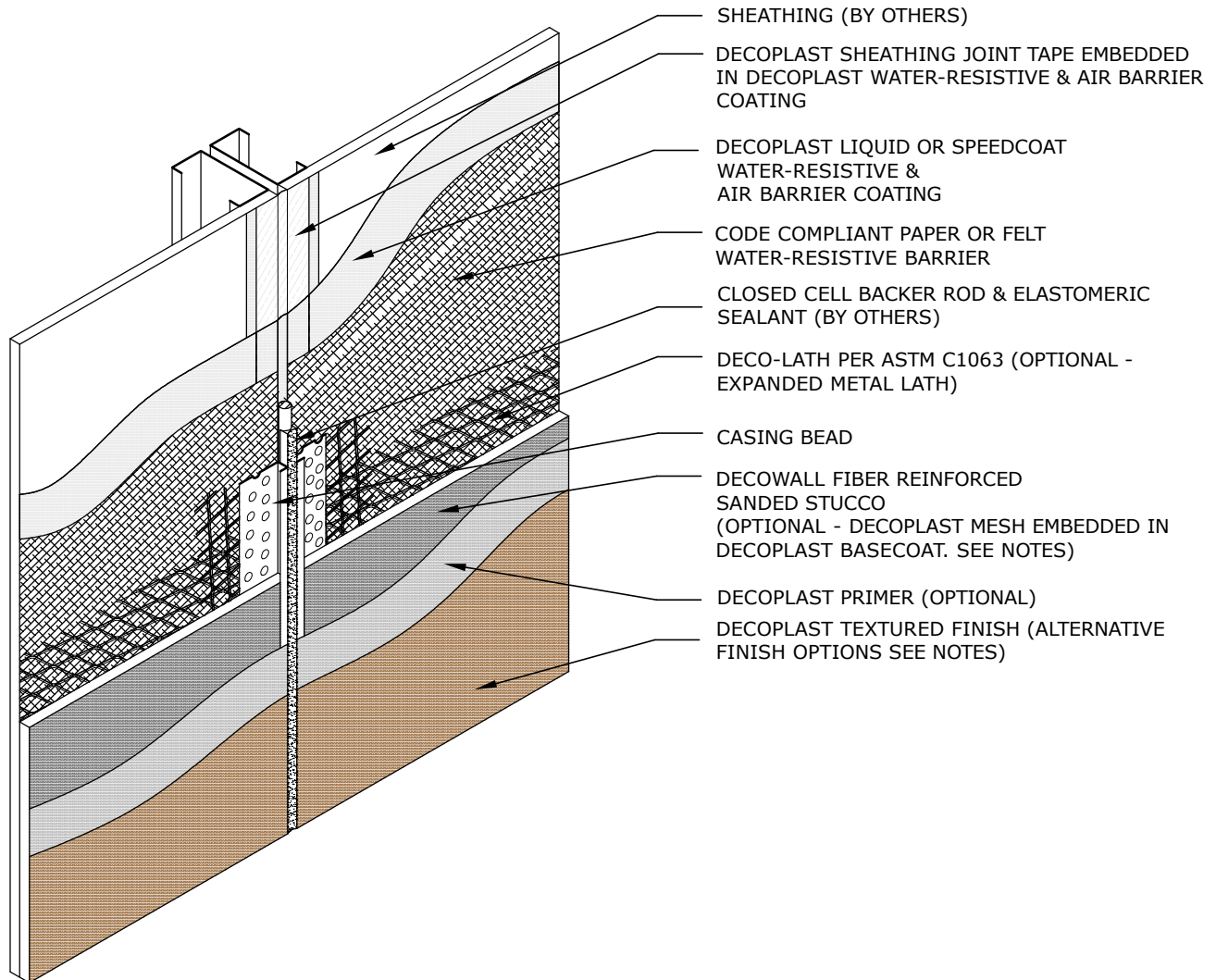
## DE1.01B DECOWALL FRS EXPANSION JOINT WITH FLASHING

DECOPLAST DECOWALL FRS - 6/1/2016

### NOTE:

1. To ensure a continuous air barrier across the building envelope, a continuous air seal should be made at each substrate change, joints/gaps, penetrations and dissimilar material terminations. There must be consideration of the Designer in the overall wall assembly design.
2. Stucco Claddings and any cladding using a mortar bed requires the use of a slipsheet installed over the Water-Resistive & Air Barrier Coating to prevent adhesion of the stucco.
3. Refer to Decoplast specifications specified basecoat product & thickness
4. Optional Decoplast Mesh embedded in Decoplast Basecoat may be applied over DECOWALL Fiber Reinforced Sanded Stucco to help bridge spidering.
5. Optional textured finishes: Decolastic, Deco250 and DecoSil.

**Disclaimer:** The design, specifications, and construction shall comply with all local building codes and standards. Decoplast installation guidelines are for general information and guidance only and Decoplast specifically disclaims any liability for the use of this design, and for design, engineering, or workmanship of any project. The assembly shall be designed to prevent condensation within the assembly. The designer and the user shall provide final drawings and specifications. Products shown other than those manufactured by Decoplast are shown for clarity of the Decoplast product only. Contact the manufacturer of such other products for installation instructions.



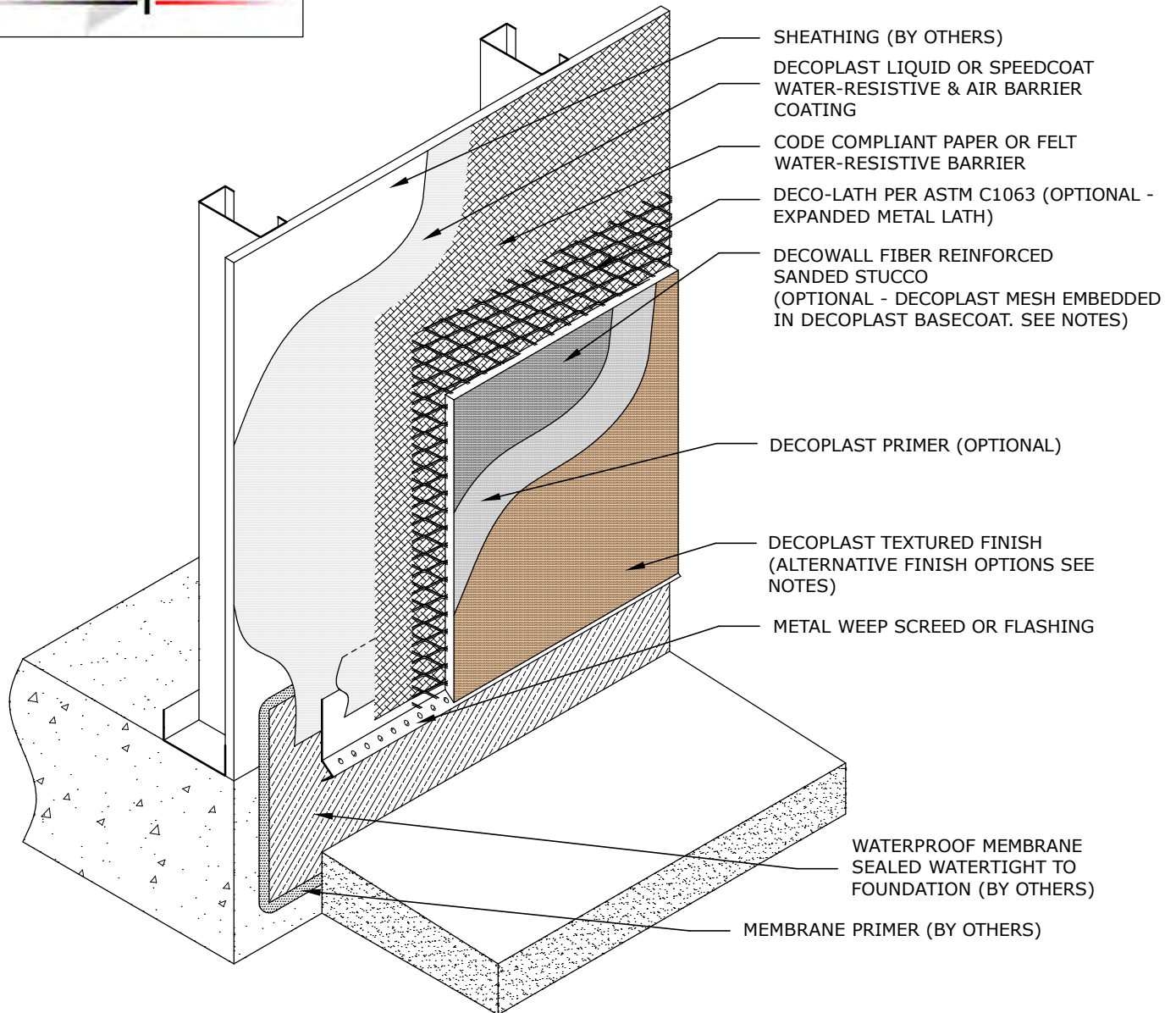
## DE1.03 DECOWALL FRS CASING BEAD TERMINATION

DECOPLAST DECOWALL FRS - 6/1/2016

### NOTE:

1. To ensure a continuous air barrier across the building envelope, a continuous air seal should be made at each substrate change, joints/gaps, penetrations and dissimilar material terminations. There must be consideration of the Designer in the overall wall assembly design.
2. Stucco Claddings and any cladding using a mortar bed requires the use of a slipsheet installed over the Water-Resistive & Air Barrier Coating to prevent adhesion of the stucco.
3. Refer to Decoplast specifications specified basecoat product & thickness
4. Optional Decoplast Mesh embedded in Decoplast Basecoat may be applied over DECOWALL Fiber Reinforced Sanded Stucco to help bridge spidering.
5. Optional textured finishes: Decolastic, Deco250 and DecoSil.

Disclaimer: The design, specifications, and construction shall comply with all local building codes and standards. Decoplast installation guidelines are for general information and guidance only and Decoplast specifically disclaims any liability for the use of this design, and for design, engineering, or workmanship of any project. The assembly shall be designed to prevent condensation within the assembly. The designer and the user shall provide final drawings and specifications. Products shown other than those manufactured by Decoplast are shown for clarity of the Decoplast product only. Contact the manufacturer of such other products for installation instructions.



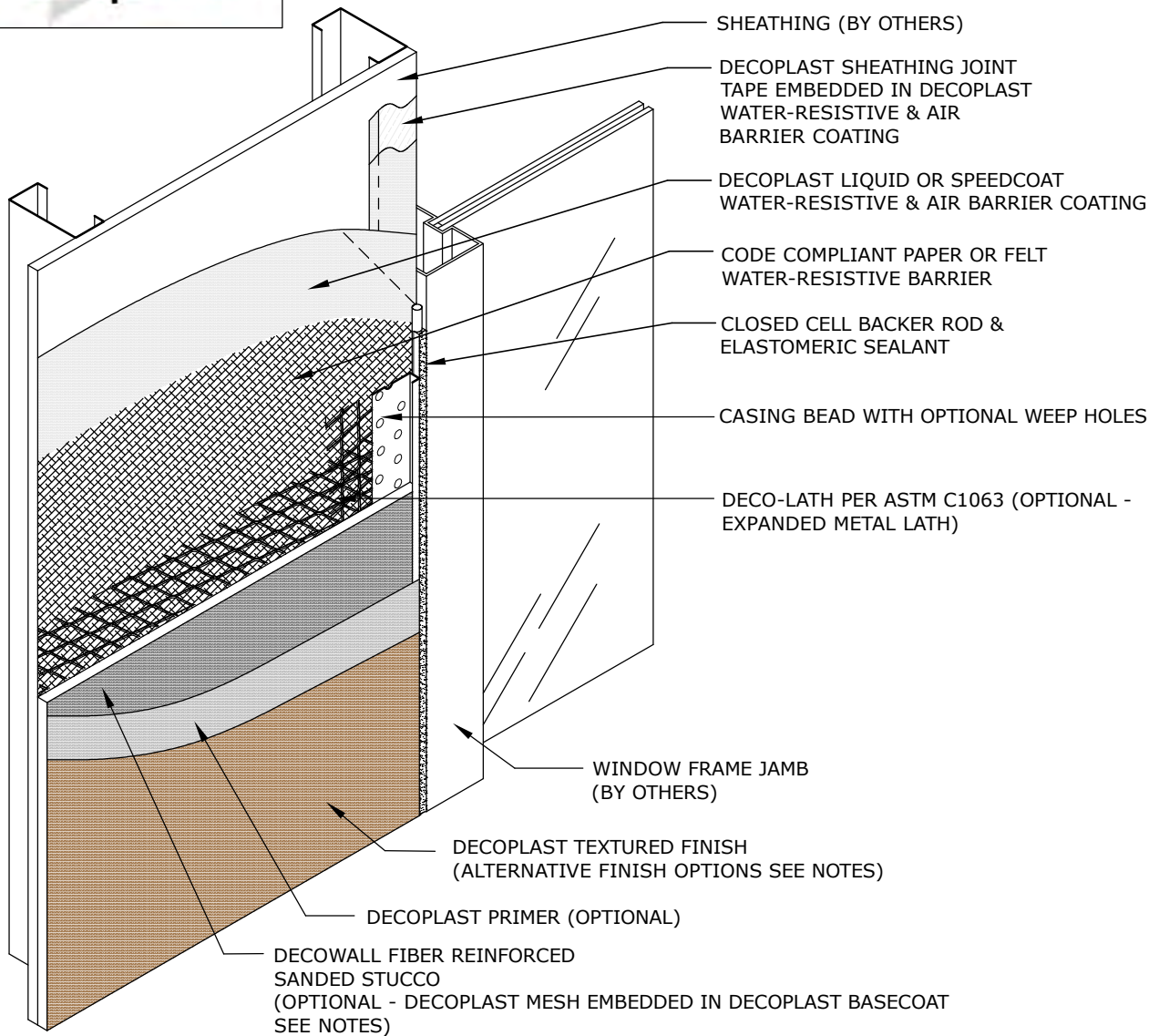
## DT1.01 DECOWALL FRS TERMINATION AT GRADE

DECOPLAST DECOWALL FRS - 6/1/2016

### NOTE:

1. To ensure a continuous air barrier across the building envelope, a continuous air seal should be made at each substrate change, joints/gaps, penetrations and dissimilar material terminations. There must be consideration of the Designer in the overall wall assembly design.
2. Stucco Claddings and any cladding using a mortar bed requires the use of a slipsheet installed over the Water-Resistive & Air Barrier Coating to prevent adhesion of the stucco.
3. Refer to Decoplast specifications specified basecoat product & thickness
4. Optional Decoplast Mesh embedded in Decoplast Basecoat may be applied over DECOWALL Fiber Reinforced Sanded Stucco to help bridge spidering.
5. Optional textured finishes: Decolastic, Deco250 and DecoSil.

**Disclaimer:** The design, specifications, and construction shall comply with all local building codes and standards. Decoplast installation guidelines are for general information and guidance only and Decoplast specifically disclaims any liability for the use of this design, and for design, engineering, or workmanship of any project. The assembly shall be designed to prevent condensation within the assembly. The designer and the user shall provide final drawings and specifications. Products shown other than those manufactured by Decoplast are shown for clarity of the Decoplast product only. Contact the manufacturer of such other products for installation instructions.



## DW1.01 DECOWALL FRS TERMINATION AT WINDOW JAMB

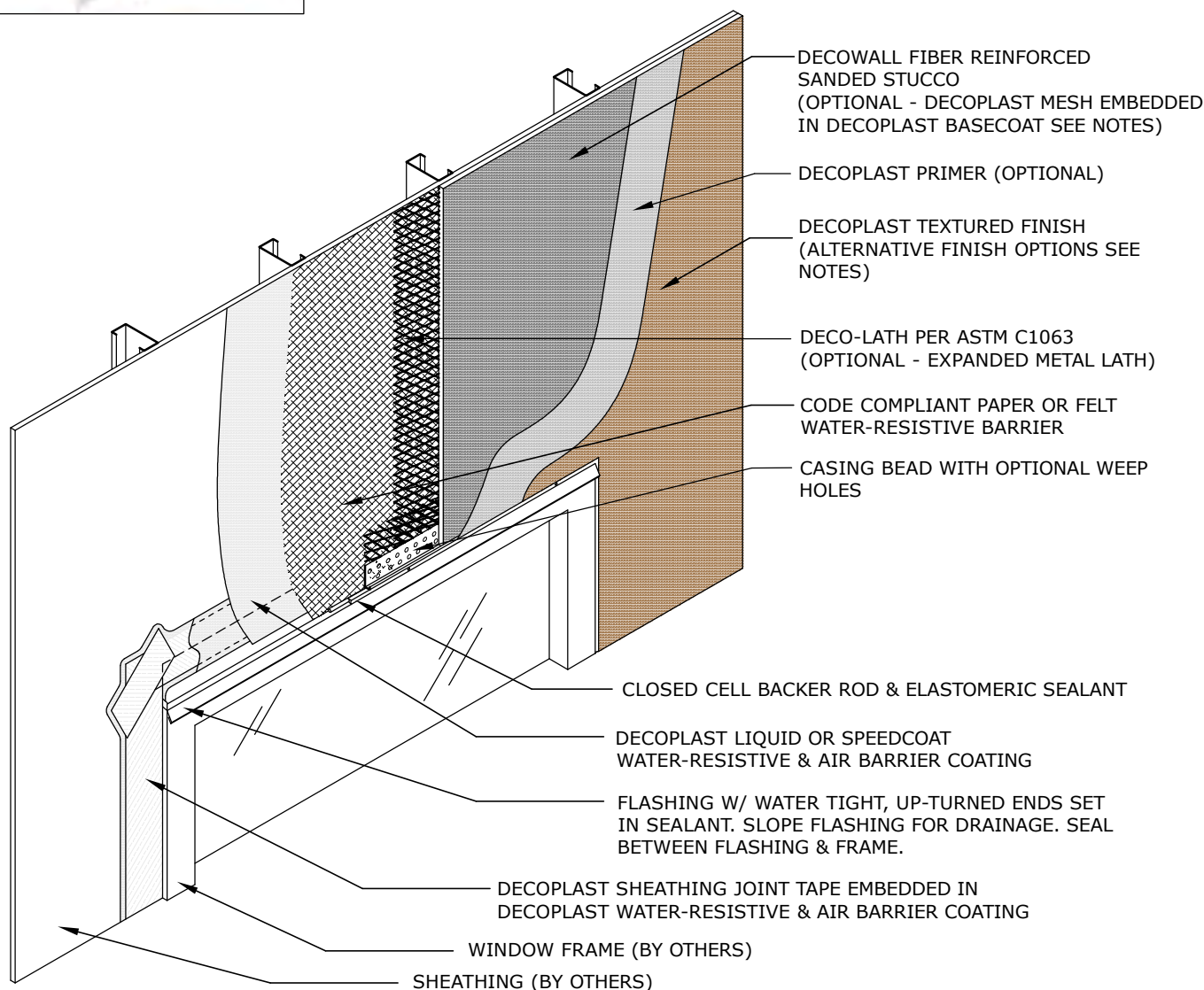
DECOPLAST DECOWALL FRS - 6/1/2016

### NOTE:

1. To ensure a continuous air barrier across the building envelope, a continuous air seal should be made at each substrate change, joints/gaps, penetrations and dissimilar material terminations. There must be consideration of the Designer in the overall wall assembly design.
2. Stucco Claddings and any cladding using a mortar bed requires the use of a slipsheet installed over the Water-Resistive & Air Barrier Coating to prevent adhesion of the stucco.
3. Refer to Decoplast specifications specified basecoat product & thickness
4. Optional Decoplast Mesh embedded in Decoplast Basecoat may be applied over DECOWALL Fiber Reinforced Sanded Stucco to help bridge spidering.
5. Optional textured finishes: Decolastic, Deco250 and DecoSil.

Disclaimer: The design, specifications, and construction shall comply with all local building codes and standards. Decoplast installation guidelines are for general information and guidance only and Decoplast specifically disclaims any liability for the use of this design, and for design, engineering, or workmanship of any project. The assembly shall be designed to prevent condensation within the assembly. The designer and the user shall provide final drawings and specifications. Products shown other than those manufactured by Decoplast are shown for clarity of the Decoplast product only. Contact the manufacturer of such other products for installation instructions.





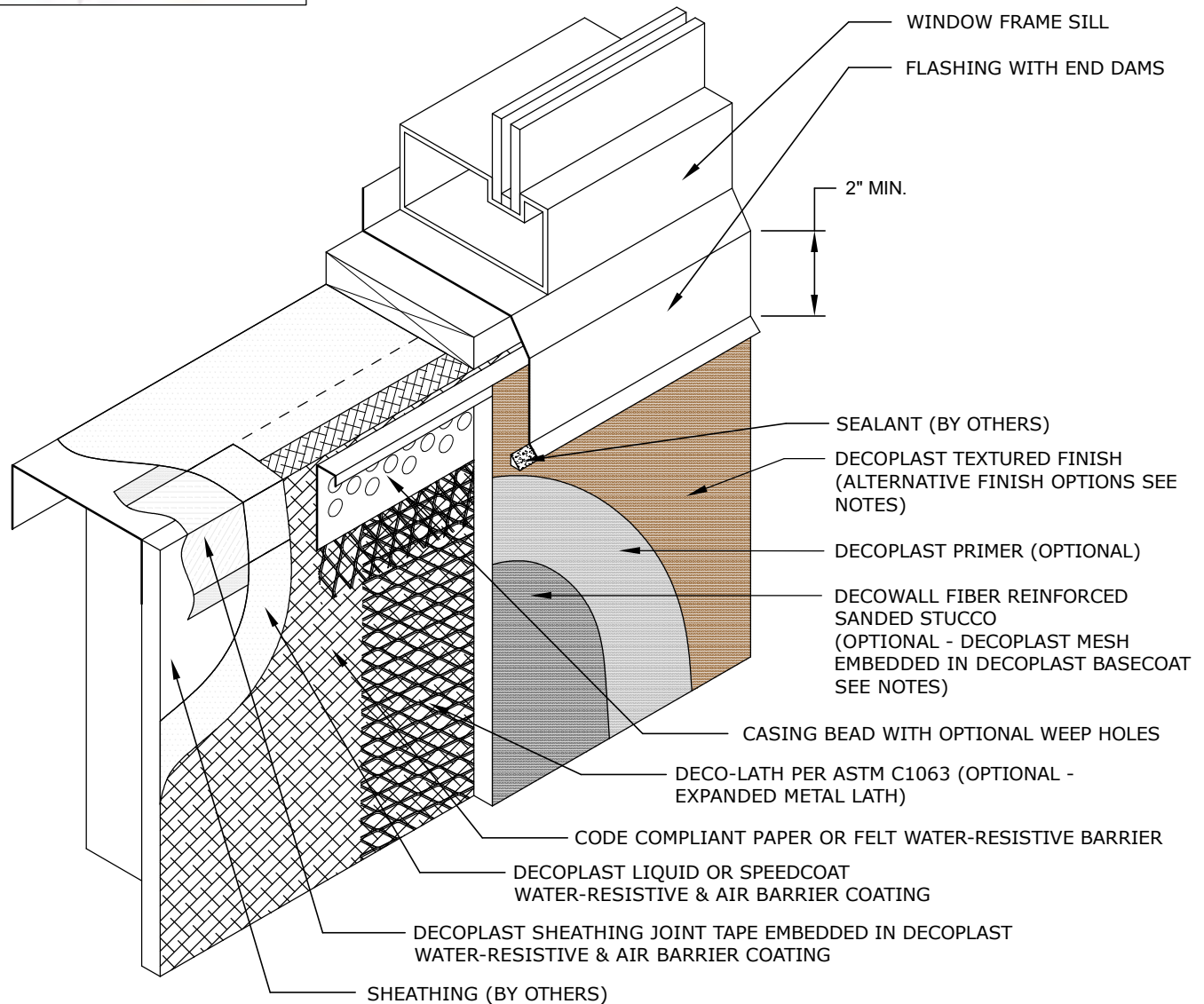
## DW1.02 DECOWALL FRS TERMINATION AT WINDOW HEAD

DECOPLAST DECOWALL FRS - 6/1/2016

### NOTE:

1. To ensure a continuous air barrier across the building envelope, a continuous air seal should be made at each substrate change, joints/gaps, penetrations and dissimilar material terminations. There must be consideration of the Designer in the overall wall assembly design.
2. Stucco Claddings and any cladding using a mortar bed requires the use of a slipsheet installed over the Water-Resistive & Air Barrier Coating to prevent adhesion of the stucco.
3. Refer to Decoplast specifications specified basecoat product & thickness
4. Optional Decoplast Mesh embedded in Decoplast Basecoat may be applied over DECOWALL Fiber Reinforced Sanded Stucco to help bridge spidering.
5. Optional textured finishes: Decolastic, Deco250 and DecoSil.

**Disclaimer:** The design, specifications, and construction shall comply with all local building codes and standards. Decoplast installation guidelines are for general information and guidance only and Decoplast specifically disclaims any liability for the use of this design, and for design, engineering, or workmanship of any project. The assembly shall be designed to prevent condensation within the assembly. The designer and the user shall provide final drawings and specifications. Products shown other than those manufactured by Decoplast are shown for clarity of the Decoplast product only. Contact the manufacturer of such other products for installation instructions.



## DW1.03 DECOWALL FRS TERMINATION AT WINDOW SILL

DECOPLAST DECOWALL FRS - 6/1/2016

### NOTE:

1. To ensure a continuous air barrier across the building envelope, a continuous air seal should be made at each substrate change, joints/gaps, penetrations and dissimilar material terminations. There must be consideration of the Designer in the overall wall assembly design.
2. Stucco Claddings and any cladding using a mortar bed requires the use of a slipsheet installed over the Water-Resistive & Air Barrier Coating to prevent adhesion of the stucco.
3. Refer to Decoplast specifications specified basecoat product & thickness
4. Optional Decoplast Mesh embedded in Decoplast Basecoat may be applied over DECOWALL Fiber Reinforced Sanded Stucco to help bridge spidering.
5. Optional textured finishes: Decolastic, Deco250 and DecoSil.

Disclaimer: The design, specifications, and construction shall comply with all local building codes and standards. Decoplast installation guidelines are for general information and guidance only and Decoplast specifically disclaims any liability for the use of this design, and for design, engineering, or workmanship of any project. The assembly shall be designed to prevent condensation within the assembly. The designer and the user shall provide final drawings and specifications. Products shown other than those manufactured by Decoplast are shown for clarity of the Decoplast product only. Contact the manufacturer of such other products for installation instructions.

## Decoplast Liquid Weather Resistive Barrier

## Decoplast Liquid Weather Resistive Barrier—Smooth



## TECHNICAL DATA

REPORT	TEST METHOD	TEST CRITERIA	TEST RESULTS
<b>Tensile Bond</b>	ASTM E2568-09e1 ASTM C297/297M-04(2010)	Min. 15 psi (103kPa)	Substrate Minimum 20psi; 139 kPa Liquid Weather Barrier Flashing Minimum 70psi; 485 kPa
<b>Water Resistance</b>	ASTM E2568-09e1 ASTM D2247-11	14 Day exposure	Pass
<b>Water Vapor Transmission</b>	ASTM E2570 ASTM D2247-11	Vapor Permeable	Pass
<b>Air Leakage</b>	ASTM E283		.02 L/Min./m2
<b>Water Penetration</b>	ASTM E331	No water penetration beyond the inner most plane of the wall after 15 min @ 2.86psf	Pass
<b>Air Permeance</b>	ASTM E2178-11		<0.02 L/s/m <sup>2</sup> @ 75Pa
<b>Puncture Resistance</b>	Lab Test	N/A	31.5 lbs
<b>Racking</b>	ASTM E72	No cracking; net deflection 1/8"	Pass
<b>Transverse Load</b>	ASTM E1233 AC-212	10 cycles	Pass
<b>Tensile Bond</b>	ASTM C297 ASTM E2134		Pass
<b>Structural Performance</b>	ASTM E1233 Proc A	10 cycles	Pass
<b>Flame Propagation</b>	NFPA-285		Pass; UL Certified
<b>Radiant Heat Ignition</b>	NFPA-268	No Flame Spread / Ignition	Pass
<b>VOC (g/L)</b>	This product complies with US EPA, South Coast AQMD and Greenseal Standard VOC emission standards for architectural coatings. VOC less than 3 g/L.		
<b>% Solids (by volume)</b>	Calculated		65%

*Decoplast Liquid Weather Resistive Barrier is a one-component, fluid-applied vapor permeable air/water-resistive barrier. It is applied directly to vertical, above-grade approved wall substrates and provides an excellent waterproof air barrier when combined with Decoplast joint and rough opening treatment. Available with or without aggregate.*

**Coverages per pail:**

Glass-Mat Gypsum Sheathing:

420-520 ft<sup>2</sup> (39-48.3 m<sup>2</sup>)

Exterior Gypsum:

420-520ft<sup>2</sup> (39-48.3m<sup>2</sup>)

Cement Board:

450-600 ft<sup>2</sup> (41.8-55.7 m<sup>2</sup>)

Poured Concrete:

450-600 ft<sup>2</sup> (41.8-55.7m<sup>2</sup>)

Plywood\*:

135-175 ft<sup>2</sup> (12.5-16.3m<sup>2</sup>)

OSB\*:

135-175ft<sup>2</sup> (12.5-16.3 m<sup>2</sup>)

CMU Standard Weight\*:

225-275 ft<sup>2</sup> (20.5-25.5 m<sup>2</sup>)

\*Coverage for C-1177 sheathing, cement board, poured concrete is at 10 mils WFT; for Plywood, OSB and CMU are at 20 mils WFT.

**When used with Decoplast Sheathing Joint Tape to treat the sheathing joints and rough openings: (coverage may vary based on condition)**

0'-4" Sheathing Fabric

625 ft (190.5m) / pail

0'-6" Sheathing Fabric

425 ft (129.5m) / pail

0'-9" Sheathing Fabric

285 ft (87m) / pail

**Packaging**

5 gallon (19L) 52.5 lbs / 23.8 kg per pail

**Shelf Life**

24 months, if properly stored and sealed.

**Storage**

Store Liquid Weather Resistive Barrier in a cool, dry place protected from freezing. Store at no less than 4°C (40°F). Protect from



## Decoplast Liquid Weather Resistive Barrier

### Decoplast Liquid Weather Resistive Barrier—Smooth

FEATURES	BENEFITS
<b>Waterproof</b>	Possible water damage minimized with repair and restoration costs associated
<b>Vapor Permeable</b>	Condensation risk in wall minimized from water vapor diffusion
<b>Structural</b>	No air leakage between sheathing and Decoplast WRB; rigid/stable under air pressure loads; does not tear or blow off the wall with wind
<b>Resists UV Degradation / Added Durability</b>	180 day exposure rating during construction.
<b>Low VOC formulation</b>	Safe, non-toxic; VOC compliant
<b>Safe Installation</b>	Low VOC, non-flammable as applied. Easy, fast installation; does not require specialized spray equipment or highly skilled labor

#### SURFACE PREPARATION

Substrate shall be dry, clean, sound and free of release agents, paint or other residue or coatings. Damaged sheathing must be removed and replaced.

Avoid application over irregular surfaces.

Substrate to be coated must be continuous without joints, holes, etc. exceeding 1/32" (0.8 mm) in size. Sheathing must be properly installed as required by applicable building codes or sheathing manufacturer.

#### MIXING

Mix with a clean, rust-free electric drill and paddle until thoroughly blended.

**DILUTION OF DECOPLAST LIQUID WEATHER RESISTIVE BARRIER IS NOT RECOMMENDED**





## Decoplast Liquid Weather Resistive Barrier

### Decoplast Liquid Weather Resistive Barrier—Smooth

#### APPLICATION

Clean, dry, properly prepared, frost-free surfaces are needed for application. Decoplast joint and rough opening treatment required for sheathing joints, inside and outside. Spot fasteners, knots or other voids in sheathing surface. Pre-spot all fasteners with Decoplast Liquid Weather Resistive Barrier if using Decoplast Sheathing Fabric including all other voids and spot surface defects such as overdriven fasteners, knots and voids.

**Gypsum Sheathing, Glass-Mat Gypsum Sheathing, Exterior Plywood / Exterior:** Apply Decoplast Liquid Weather Resistive Barrier to prepared substrate using spray equipment that can support a minimum 1 Gallon per minute (GPM) and a .031 mil tip at 3000+ psi., or with the appropriate size nap roller in a single, uniform coating at a wet thickness of 10 mils. Application over Glass-Mat Gypsum Sheathing, plywood and exterior gypsum sheathing: use a 1/2" (13 mm) nap roller.

**Oriented Strand Board (OSB):** A two-coat application of Decoplast Liquid Weather Resistive Barrier is required over OSB. The first coat is applied over the prepared substrate prior to treating sheathing joints, rough openings, and corners. Apply Decoplast Liquid Weather Resistive Barrier by spray or roller with a 1/2" (13mm) nap roller in a single, uniform coating at a wet thickness of 10 mils and allow drying. For air barrier, sheathing joints, rough openings, and corners must then be covered with Decoplast joint treatment. Substrate to receive the second coat of Decoplast Liquid Weather Resistive Barrier must be continuous without joints, holes, etc. exceeding 1/32" (0.8 mm) in size. The second coat of Decoplast Liquid Weather Resistive Barrier must be applied over the treated surface in a single, uniform coating to a wet thickness of 10 mils.

#### Concrete Masonry Wall Construction:

Concrete masonry wall construction must be structurally sound, clean, dry, and free from damage, frost, and all bond-inhibiting material, including dust, dirt, mold, algae, and efflorescence. Repair cracks up to 1/8 inch (3 mm) wide by filling. Rake the crack with a sharp tool to remove loose or friable material, and blow clean with oil-free compressed air. For cracks wider than 1/8" (3 mm) and up to 1/4" (6 mm) wide, use a paintable acrylic latex caulk to fill the crack, tool flush with the surface, and allow drying completely. For moving cracks consult a structural engineer. Protect crack repair materials from rain and freezing until dry.

#### Air and Moisture Barrier:

**Spray-applied over CMU:** Apply Decoplast Liquid Weather Resistive Barrier uniformly with suitable spray equipment. Backroll to fill the surface and allow drying. Apply a second uniform coat of Decoplast Liquid Weather Resistive Barrier and back-roll to achieve void / pinhole free surface. Depending on the condition of the surface, a minimum of 10 wet mils up to a maximum of 30 wet mils per coat is required. Apply additional coats if needed to achieve a VOID / PINHOLE FREE surface.

**Roller-applied over CMU:** Apply Decoplast Liquid Weather Resistive Barrier uniformly with a 3/4 inch (19 mm) nap roller and allow drying. Apply a second uniform coat of Decoplast Liquid Weather Resistive Barrier to achieve a void and pinhole free surface. Depending on the condition of the surface a minimum of 10 wet mils up to a maximum of 30 wet mils per coat is required. Apply additional coats if needed to achieve a VOID AND PINHOLE FREE surface.

**IMPORTANT NOTE:** Decoplast Liquid Weather Resistive Barrier functions as a waterproof air barrier on normal weight concrete masonry unit wall construction with flush (struck flush with the surface of the CMU) or concave joints when a minimum of two liberal coats are applied. Additional coats may be necessary depending on the condition of the CMU wall surface, CMU porosity, joint profile, and other variables that may exist. For "rough" CMU wall surfaces, skim coat the entire surface with Decoplast cementitious leveler before application of Decoplast Liquid Weather Resistive Barrier. A VOID AND PINHOLE FREE SURFACE must be achieved for Decoplast Liquid Weather Resistive Barrier to properly function as a waterproof air barrier on CMU wall surfaces.

#### Curing/Drying

Decoplast Liquid Weather Resistive Barrier is dry to touch and can be over coated within 2-4 hours under normal conditions [70°F (21°C), 50% RH]. Wait 24 hours before adhesive attachment of Decoplast insulation board. Final drying varies depending on temperature / humidity and surface conditions. Protect from rain and freezing until completely dry.

#### Material Storage

Keep containers covered to protect from skinning. If skin forms, remove the skinned material from container; remaining material is unaffected by skinned material.

#### Clean Up

Clean tools and equipment with water immediately after use. Dried material can only be removed mechanically.

## Decoplast Liquid Weather Resistive Barrier

### Decoplast Liquid Weather Resistive Barrier—Smooth



#### LIMITATIONS

- Apply only when the surface and ambient temperatures are above 40°F (4°C) and below 100°F (38°C) during application and drying period.
- Not recommended for use when cool, damp conditions exist for prolonged periods. Cool, damp conditions retard drying and may require extended periods of protection.
- Do not use on damp surfaces, below grade, or on surfaces subject to water immersion.
- Not recommended for use over fire-retardant treated or pressure treated plywood substrates.
- Not recommended for spanning sheathing joints or holes in excess of 1/8" (3 mm) wide.
- Contact Decoplast Technical Service for additional information regarding coverage over different brands.
- Ventilate temporary heaters to the exterior to prevent water vapor from accumulating on or within the wall assembly materials.
- Decoplast Liquid Weather Resistive Barrier can be left exposed to weather for up to 6 months of installation to protect the substrate.
- When Decoplast Liquid Weather Resistive Barrier is used in conjunction with Decoplast Continuous Insulation Systems ensure the Decoplast Liquid Weather Resistive Barrier surface is clean, dry, and free of surface contamination. Install Decoplast Continuous Insulation System Board within 30 days of the application of Decoplast Liquid Weather Resistive Barrier, or clean the surface and recoat with Decoplast Liquid Weather Resistive Barrier.
- For Portland cement stucco and similarly constructed wall assemblies over metal lath contact Decoplast Technical Service.

#### HEALTH AND SAFETY

##### Health Precaution

As with any chemical construction product, exercise care when handling. Product is water-based.

##### WARNING!

Causes eye and skin irritation.

##### Precaution Measures:

Wash hands thoroughly after handling. Wear protective gloves/protective clothing/eye protection/face protection.

##### First Aid:

Eye Contact: Immediately flush eyes with plenty of water for at least 15 to 20 minutes. Ensure adequate flushing of the eyes by separating the eyelids with fingers. Get immediate medical attention.

Skin Contact: Immediately wash skin with plenty of soap and water for 15 to 20 minutes, while removing contaminated clothing and shoes. Get medical attention if irritation develops or persists.

Inhalation: If inhaled, remove to fresh air. If not breathing, give artificial respiration or give oxygen by trained personnel. Seek immediate medical attention.

Ingestion: If swallowed, do NOT induce vomiting. Call a physician or poison control center immediately. Never give anything by mouth to an unconscious person.

##### Spills

Contain and collect with a suitable absorbent material such as cotton rags.

##### Disposal

Dispose of in accordance with local, state or federal regulations.

##### Warning

KEEP CONTAINER CLOSED WHEN NOT IN USE. KEEP OUT OF THE REACH OF CHILDREN. NOT FOR INTERNAL CONSUMPTION. FOR INDUSTRIAL USE ONLY. Consult the Safety Data Sheet (SDS) for further health and safety information.

##### LIMITED WARRANTY

This product is subject to a written limited warranty. Refer to Decoplast Specifications for more complete information on proper use and handling of this product.



This product is intended for use by qualified professional contractors. All information conforms to the standard detail recommendations and specifications for the installation of Decoplast systems and is presented in good faith as of the date of publication of this document. GREENMAKER INDUSTRIES ASSUMES NO LIABILITY, EXPRESSED OR IMPLIED, AS TO THE WORKMANSHIP, ENGINEERING OR ARCHITECTURE OF ANY PROJECT. For more information regarding this product or additional Decoplast products, please contact a Decoplast Representative at (860) 761-2830 or visit our website [www.Decoplast.com](http://www.Decoplast.com).

## Decoplast Sheathing Fabric



### TECHNICAL CHARACTERISTICS

MD Yarn	500 Denier H.T. Polyester
CD Yarn	500 Denier H.T. Polyester
Pattern	5 x 5 yarns/inch
Tensile	50 x 45 yarns/inch
Weight	2.13 oz/yd <sup>2</sup>
Coating	F.R. PVC
Substrate	1 layer of 0.5 oz/yd <sup>2</sup> Spunbond Polyester

*Decoplast Sheathing Fabric is a cost-effective reinforcing fabric made by chemically bonding continuous filament yarn in an open mesh construction. It is commonly used to increase tear or puncture resistance, improve dimensional stability, or aid in processing. The utility of Decoplast Sheathing Fabric can be further enhanced by the use of functional binders for increased chemical, tear or moisture resistance, for proper chemical compatibility with the construction they are reinforcing, or for providing the adhesive properties needed for laminations.*

### PROPERTIES

**Excellent Dimensional Stability**

**Tensile Strength**

**Increased Tear Resistance**

#### Storage

Store off the ground in a dry area with adequate ventilation. Protect from extreme heat 130°F, moisture and direct sunlight.

### HEALTH AND SAFETY

#### Health Precaution

As with any chemical construction product, exercise care when handling.

#### Safety Precaution

Wash hands thoroughly after handling. Wear protective gloves/protective clothing/eye protection/face protection.

#### First Aid:

**EYE CONTACT:** Immediately flush eyes with plenty of water for at least 15 to 20 minutes. Contact a physician.

**SKIN CONTACT:** Immediately wash skin with plenty of soap and water for 15 to 20 minutes, while removing contaminated clothing and shoes. Get medical attention if irritation develops or persists. **Inhalation:** Move to fresh air. If symptoms persist, call a physician.

**INGESTION:** Accidental ingestion of this material is unlikely. If this does occur, watch person for several days to make sure intestinal blockage does not occur. Rinse mouth with water and drink water to remove fibers from the throat. If symptoms persist, call a physician.

#### Disposal

Dispose of in accordance with local, state or federal regulations.

#### Warning

KEEP CONTAINER CLOSED WHEN NOT IN USE. KEEP OUT OF THE REACH OF CHILDREN. NOT FOR INTERNAL CONSUMPTION. FOR INDUSTRIAL USE ONLY. Consult the Safety Data Sheet (SDS) for further health and safety information.

#### LIMITED WARRANTY

This product is subject to a written limited warranty. Refer to Decoplast Specifications for more complete information on proper use and handling of this product.



This product is intended for use by qualified professional contractors. All information conforms to the standard detail recommendations and specifications for the installation of Decoplast systems and is presented in good faith as of the date of publication of this document. GREENMAKER INDUSTRIES ASSUMES NO LIABILITY, EXPRESSED OR IMPLIED, AS TO THE WORKMANSHIP, ENGINEERING OR ARCHITECTURE OF ANY PROJECT. For more information regarding this product or additional Decoplast products, please contact a Decoplast Representative at (860) 761-2830 or visit our website [www.Decoplast.com](http://www.Decoplast.com).

**DECOSHIELD ADHESIVE BACKED PRIMERLESS FLASHING TAPE****With SUPERSTICK TECHNOLOGY**

*A high-performance rough opening and flashing tape designed for use with EIFS and Stucco systems to seal around penetrations, window, door openings and flanges and sheathing joints. Can be applied to most substrates without the use of primer or mechanical fasteners. The polyester fabric top layer provides excellent bonding surface for cementitious and synthetic coatings.*

**AIR/WATER RESISTIVE BARRIER COMPONENTS – FLASHING TAPE****FEATURES AND BENEFITS**

- 30-day exposure rating
- Fully adhered system
- No Primer needed
- Antimicrobial coated fabric
- Split release liner for easy application
- Can be applied to damp surfaces
- Sticks to substrates at -20°F
- No VOC's, HFCC's, nor CFC's
- Compatible with and will adhere to most construction surfaces, wood, concrete, CMU Block, OSB, Plywood, glass mat exterior sheathing products, foam insulation board, ICF, metal, TPO and EPDM
- Forms a positive air/moisture barrier

**TECHNICAL DATA**

Properties	Test Method	Test Results
Color		White
Thickness		17 mil
Self-Sealing Ability	ASTM D1970 Section 7.9	Pass
Moisture Vapor Transmission	ASTM E96	Wet Cup 0.270 Perms Dry Cup 0.296 Perms
Cold Temperature Flexibility	ASTM C765-73	Passes
Grab Tensile	ASTM D5034	Warp 67 lbs / Weft 57 lbs
Tensile Elongation at Max load	ASTM D5034	Warp 16% / Weft 107%
Mixed fungal assessment	ASTM G21	No growth at 28 days
In-Service Temperature		-45°F/-42°C to 300°F/148.9°C
Installation Temperature		-20°F/-28°C to 125°F/51.6°C*
Solubility to Water		Insoluble
UV Stability		30 days

## **PACKAGING**

Roll Width: 4, 6, 12"

Roll Length: 75'

## **USES**

Used as a sealing tape for sheathing joints and around penetrations in Stucco and EIFS systems. Safe for use on all window and door flanges and most commonly used construction substrates.

## **LIMITATIONS**

Not recommended to be exposed for more than 30 days.

Not recommend to be applied over uncured (wet) sealants or adhesives, even if compatible

Not recommended for use on substrates with standing water or visibly wet surfaces, dirty surfaces, frozen surfaces, or surfaces contaminated with foreign substances such as grease, oil or solvents.

Not recommended for use when in direct contact with PVC type roofing membranes.

\*Note: **DECOSHIELD Adhesive Backed Primerless Flashing Tape** can be applied in extreme cold/hot weather; however, we do not recommend applying product below 0°F (-17°C) or above 125°F (51.6°C) due to health and safety reasons.

## **SHELF LIFE**

Maintains optimum initial adhesion to substrates when used within twenty-four months from the date of manufacture.

## **STORAGE**

Should be stored in the original, unopened container at ambient temperatures between 40°F to 90°F (5°C to 32°C). Storage area should remain dry and out of direct sunlight. Do not remove materials from original containers until ready for use. Do not double stack pallets.

## **PREPARATION**

All surfaces shall be clean, dry and free of any foreign materials. The surface shall be free of gaps, sharp edges, and protrusions.

Metal surfaces may need to be solvent wiped and/or abraded to achieve optimum adhesion. Recommend testing substrates for adhesion prior to full application.

## **APPLICATION**

Joint/seam applications: care should be taken to apply flashing tape to form water- shedding laps. Cut the flashing tape to length, remove a small portion of the release liner and apply to the substrate, continue to remove the release liner as you firmly roll into place using a "J" roller or hand roller to smooth out any wrinkles, air bubbles or creases. End laps should be a minimum 6" and should be firmly rolled to ensure adequate adhesion.

When applying to exterior gypsum products (i.e. Dens Glass Gold) primer is not needed, provided the surface is clean, dry, and free of any contaminants and is firmly rolled to ensure full adhesion.

## **CLEAN UP**

Dispose of waste in accordance to local requirements. Control worksite so that boxes, packaging and release liner do not present a hazard.

Boxes, packaging materials and release liner can be recycled.

## CAUTION

**Decoshield Adhesive Backed Primerless Flashing Tape** has an aggressive adhesive, we recommend removing 3" to 6" of the release liner at a time while installing to help prevent the tape from sticking to itself.

PVC and TPO type roofing membranes may contain high concentrations of plasticizers that may react with the adhesive and is not recommended to be applied over these substrates.

Do not adhere Flashing Tape to skin, removal may cause loss of hair and/or bleeding.

The use of safety glasses and gloves is recommended.



697 Oakwood Ave  
West Hartford, CT 06110  
860-761-2830

This product is intended for use by qualified professional contractors. All information conforms to the standard detail recommendations and specifications for the installation of Decoplast Wall Systems and is presented in good faith as of the date of publication of this document. GREENMAKER INDUSTRIES ASSUMES NO LIABILITY, EXPRESSED OR IMPLIED, AS TO THE WORKMANSHIP, ENGINEERING or ARCHITECTURE OF ANY PROJECT. For more information regarding this product or additional Decoplast Wall Systems products, please contact a DECOPLAST Wall Systems Representative at (860) 761-2830 or visit our website [www.dcoplast.co](http://www.dcoplast.co)



## Deco-Lath

Deco-Lath 8.8 oz 3D

### TECHNICAL DATA / PROPERTIES

REPORT	TEST METHOD	TEST CRITERIA	TEST RESULTS	
<b>Tensile Strength (lb/in) Product</b>	ASTM D-5035		WARP	WEFT
		Deco-Lath 8.8 oz/yd	370-430	245-310
<b>Weave</b>			LENO	
<b>Color</b>			Grey	
<b>Product Thickness</b>		Deco-Lath 8.8 oz/yd	0.217/in	5.5/mm
<b>Coating</b>			Alkali Resistant	

Decoplast Deco-Lath is an open weave, three-dimensional, self-furred, nominal 1/4" (6.3mm) thick glass fiber reinforcing lath designed for use with field mix exterior cement plaster conforming to ASTM C926 in "scratch and brown" applications. Complies with the performance requirements of ASTM C1788 (per the test methods in ASTM C1764) and the installation requirements of ASTM C1787.

#### Coverage

487.5 ft<sup>2</sup> / roll

#### Packaging

39" x 150" lineal feet roll in poly bag; Deco-Lath 8.8 weighs approximately 31 lb (14 kg) per roll.

#### Storage

Store off the ground in dry area, upright position. Protect from extreme heat [90°F (32°C)], moisture and direct sunlight.

### FEATURES

### BENEFITS

<b>Non-metallic</b>	Will not rust
<b>Pliable, with no sharp edges</b>	Easier and safer to handle and cut
<b>Non-directional</b>	Can be applied vertically or horizontally
<b>Wide rolls</b>	Fewer overlaps required to give better coverage
<b>Three-dimensional profile</b>	Self-furring, excellent mechanical key using traditional fastening procedures
<b>Alkali resistant</b>	Long-term durability and performance
<b>Package (light-weight rolls)</b>	Application time/labor savings

### USE

A component of a 1/2" to 7/8" (13mm to 22mm) thick cementitious exterior wall coating application of exterior Portland cement plaster (traditional stucco) application that provides keying and continuous reinforcement for stucco used on vertical wall applications with solid backing. May also be used as a mortar base for light-weight veneer facing products such as precast stone veneer (ASTM C1780).

Not for use on soffits or open framing.

### SURFACE PREPARATION

Surfaces must be clean, dry, and free of frost, damage and all bond-inhibiting materials, including dirt, efflorescence, form oil and other foreign matter. Damaged sheathing must be removed and replaced. Avoid application over irregular surfaces.

### APPLICATION

#### General:

Apply Deco-Lath in accordance with Decoplast specifications and the following:

- Acceptable substrates include cement board (ASTM C1325 Type A Exterior), gypsum sheathing (ASTM C79/C1396 or C1177), Exposure 1 or better exterior grade plywood, Exposure 1 OSB, poured concrete or unit masonry.
- Apply/Install substrate per the manufacturer's instructions and applicable building codes.
- Not for use over open framing.



## Deco-Lath

Deco-Lath 8.8 oz 3D

### APPLICATION CONTINUED

#### **Water Resistive Barrier:**

- Not required on unit masonry or concrete substrates to receive the cement plaster stucco.
- Over wood or metal framing with sheathing, a weather-resistive barrier must be installed. When installed over wood based sheathing (Plywood or OSB), two layers of Grade "D" building paper are required by IBC prior to installation of Deco-Lath. Other acceptable water-resistive barriers include polymeric water resistive-barriers such as Tyvek® Stuccowrap® and acceptable equals that comply with and are recognized by local building codes.
- Trowel/roller applied water-resistive barriers can be used provided a subsequent layer of building papers or a polymeric water-resistive barrier such or building paper that is applied over the trowel/roller applied weather barrier to act as a slip sheet.
- Install the water-resistive barrier over the substrate according to manufacturer's specifications and applicable building code requirements.
- The water-resistive barrier shall be free of any damage such as holes or breaks, and must be applied to all surfaces to receive the cement plaster stucco.
- Wrap the water-resistive barrier into rough openings to increase the level of protection to the building frame and interior.

**Trim:** Install trim accessories per drawings and specification and ASTM C1063.

**Apply Deco-Lath over substrate with minimum 3" overlap at vertical and horizontal edges and overlap on flange of trim accessories. Deco-Lath can be applied horizontally or vertically and should be applied such that it is flat and free of ripples, wrinkles, etc.**

#### **Fasteners:**

- ULP-302 (1 3/4") or Lath Plate (1 1/4") Mechanical Fastening Systems by Wind-Lock Corp.
- **Masonry:** masonry type [M] expansion fastener with ULP 302 diameter washer; or Lath Plate 25 mm (1") minimum penetration into masonry. Fastener spacing 6" o.c. vertically and 16" o.c. horizontally.
- **Light Gauge Steel Framing/Furring (20 Gauge):** light metal type [LM] bugle head screws with ULP 302 (1 3/4") diameter washer or Lath Plate 16 mm (5/8") minimum penetration into framing 6" o.c. vertically and 16" o.c. horizontally
- **Heavy Gauge Steel Framing (18 to 12 Gauge maximum):** metal type [S] bugle head screws with ULP 302 (1 3/4") diameter washer or Lath Plate or 32 mm (1 1/4") long x 2.5 mm (1/8") diameter VersaPin Gripshank® fasteners by Aerosmith Fastening Systems with Lath Plates; 16 mm (5/8") minimum penetration to framing 6" o.c. vertically and 16" o.c. horizontally.
- **Wood framing:** wood type [W] bugle head screws with ULP 302 (1 3/4") diameter washer or Lath Plate; 16 mm (5/8") minimum penetration into framing or minimum 16 gauge wire staples with minimum 3/4" crown and minimum 3/4" penetration into framing, 6" o.c. vertically and 16" o.c. horizontally.

**Apply cement plaster stucco within 60 days of Deco-Lath application.**

**Install Exterior Cement Plaster Stucco (ASTM C926) or Cementitious Exterior Wall Coating (ICC-ES AC-11) per Specifications and Details.**

**Install Veneer facing mortar per Specifications, Details and veneer facing manufacturer's specifications.**



## Deco-Lath

Deco-Lath 8.8 oz 3D



### LIMITATIONS

Decoplast Deco-Lath should only be used in accordance with appropriate Decoplast Insulated Wall Cladding Specifications or other published recommendations.

Not for use on soffits or open framing.

Minimum thickness of 1/2", maximum thickness of 7/8" when DecoWall FRS or other cementitious exterior wall coating is installed in accordance with ICC-ES-AC-11.

Maximum allowable weight of adhered veneer facing products is 24 lbs. per square foot (includes veneer weight and mortar scratch and bed coat).

### HEALTH AND SAFETY

#### Health Precaution

Contains glass fiber. As with any chemical construction product, exercise care when handling.

#### Safety Precaution

Wash hands thoroughly after handling. Wear protective gloves/protective clothing/eye protection/face protection.

#### First Aid:

EYE CONTACT: Immediately flush eyes with plenty of water for at least 15 to 20 minutes. Contact a physician.

#### Disposal

Dispose of in accordance with local, state or federal regulations.

#### Warning

KEEP CONTAINER CLOSED WHEN NOT IN USE. KEEP OUT OF THE REACH OF CHILDREN. NOT FOR INTERNAL CONSUMPTION. FOR INDUSTRIAL USE ONLY. Consult the Safety Data Sheet (SDS) for further health and safety information.

#### LIMITED WARRANTY

This product is subject to a written limited warranty. Refer to Decoplast Specifications for more complete information on proper use and handling of this product.



697 Oakwood Avenue, West Hartford, CT 06110  
voice: 860.761.2830 fax: 860.761.2831  
[www.decoplast.com](http://www.decoplast.com)

This product is intended for use by qualified professional contractors. All information conforms to the standard detail recommendations and specifications for the installation of Decoplast systems and is presented in good faith as of the date of publication of this document. GREENMAKER INDUSTRIES ASSUMES NO LIABILITY, EXPRESSED OR IMPLIED, AS TO THE WORKMANSHIP, ENGINEERING OR ARCHITECTURE OF ANY PROJECT. For more information regarding this product or additional Decoplast products, please contact a Decoplast Representative at (860) 761-2830 or visit our website [www.Decoplast.com](http://www.Decoplast.com).



# ONE COAT FIBERGLASS REINFORCED STUCCO

PRODUCT NO. 1200 (SANDED) AND NO. 1216 (CONCENTRATED)

## DIVISION 9

Portland Cement  
Plastering  
09 24 00

### PRODUCT DESCRIPTION

QUIKRETE® One Coat Fiberglass Reinforced Stucco is a fiber-reinforced, Portland cement based plaster designed for use in one-coat stucco applications. When applied in accordance with IAPMO ER-455, this product provides a one-hour fire rating.

### PRODUCT USE

QUIKRETE® One Coat Fiberglass Reinforced Stucco (FRS) is an alternative wall cladding. The system is a proprietary cementitious mix for use as an exterior coating reinforced with metal or wire fabric lath. It is applied to substrates of plywood, oriented strand board (OSB), Gypsum sheathing or expanded polystyrene (EPS) extruded and polyisocyanurate (ISO) insulation board on exterior walls of wood or steel stud construction. QUIKRETE® One Coat Fiberglass Reinforced Stucco may be applied over concrete and masonry units in one coat. QUIKRETE® FRS may also be used as the scratch and brown coat in a conventional two or three coat stucco system.

QUIKRETE® FRS has been evaluated by IAPMO as an exterior wall covering in compliance with Chapters 15 and 25 of the IBC and Chapter 7 of the IRC. Material has been evaluated for exterior durability, wind resistance, fire-resistance ratings and installation on walls required to be of Type I, II, III, IV and V construction. The QUIKRETE® FRS systems have been evaluated and are compliant with the following codes and regulations:

- 2018, 2015, 2012, 2009 and 2006 International Building Code (IBC)
- 2018, 2015, 2012, 2009 and 2006 International Residential Code (IRC)
- 2019 California Building Code (CBC) and 2019 California Residential Code (CRC)
- 2017 and 2014 Florida Building Code (FBC), and 2017 and 2014 Florida Building Code Residential (FBC Residential)

QUIKRETE® One Coat FRS Sanded is a factory prepared mixture of Type I or Type II Portland cement complying with ASTM C150, hydrated lime complying with ASTM C207, fibers and other approved ingredients. QUIKRETE® One Coat FRS Concentrated is the same as QUIKRETE® One Coat FRS Sanded, except the concentrated mix is provided for field addition of sand.



### COVERAGE

QUIKRETE® One Coat One Coat Fiberglass Reinforced Stucco, per 80 lb (36.2 kg) bag:

3/8" (9.5 mm)	20-24 ft² (1.9-2.2 m²)
1/2" (13 mm)	15-18 ft² (1.4-1.7 m²)
3/4" (19 mm)	10-12 ft² (0.9-1.1 m²)

QUIKRETE® One Coat Fiberglass Reinforced Stucco Concentrated, per 80 lb (36.2 kg) bag, blended with 210 pounds (95.3 Kg) of plaster sand:

3/8" (9.5 mm)	73-87 ft² (6.8-8.1 m²)
1/2" (13 mm)	54-65 ft² (5.0-6.0 m²)
3/4" (19 mm)	36-44 ft² (3.3-4.1 m²)

*All coverages are approximate and vary with thickness, waste, etc.*

### SIZES

- QUIKRETE® One Coat FRS is packaged in 80 lb (36.2 kg) bags
- QUIKRETE® One Coat FRS Concentrated is packaged in 80 lb (36.2 Kg) bags and must be field mixed with properly graded plaster sand in accordance with ASTM C144 or ASTM C897. Each 80 lb (36.2 Kg) bag should be mixed with approximately 210 to 250 lbs (95.2 Kg) of sand.

### TECHNICAL DATA

Applicable Standards

ASTM International

- ASTM C144 Standard Specification for Aggregate for Masonry Mortar
- ASTM C150 Standard Specification for Portland Cement Mortar
- ASTM C207 Standard Specification for Hydrated Lime for Masonry Purposes
- ASTM C834 Standard Specification for Latex Sealants
- ASTM C897 Standard Specification for Aggregate for Job-Mixed Portland Cement-Based Plasters

- ASTM C926 Standard Specification for Application of Portland Cement-Based Plaster
- ASTM C 1063 Standard Specification for Installation of Lathing and Furring to Receive Interior and Exterior Portland Cement-Based Plaster
- ASTM E72 Standard Test Methods of Conducting Strength Tests of Panels for Building Construction
- ASTM E514 Standard Test Method for Water Penetration and Leakage through Masonry

#### Approvals

U.S. Department of Housing and Urban Development (HUD) - #1207  
International Association of Plumbing and Mechanical Officials ER-455

#### Fire Rating

For construction of exterior walls with a 1-hour fire resistive wall assembly, follow instructions in IAPMO ER-455. The assemblies include substrates of fiberboard, plywood, OSB, gypsum sheathing, or EPS insulation board and open framing on exterior walls of wood or steel stud construction.

QUIKRETE® One Coat One Coat FRS when tested in accordance with the procedures specified yields the results indicated in Table 1.

**TABLE 1 TYPICAL PHYSICAL PROPERTIES**

Wind driven rain, average flow, 24 hours, ASTM E514	0.002 lb (0.9 g) per hr
Freeze/Thaw Resistance, ICBO Acceptance criteria	No visible cracking, checking or delamination, 10 F/T cycles of 75° to -20°F (24 to -29°C)
Water vapor permeability, ASTM E514	7.2 perm (415 ng/Pa x s x m²) @ 14 days
Transverse load strength, ASTM E72	
Wood Studs, average load to failure	96 psf (469 kg/m²)
Metal studs, average load to failure	138 psf (674 kg/m²)

#### INSTALLATION

Only contractors with experience applying one-coat systems, or those certified by the manufacturer, should install QUIKRETE® One Coat FRS.

#### PREPARATORY WORK

The application of QUIKRETE® One Coat FRS is intended for use as a one-coat stucco over #20 gauge [0.035 in (0.89 mm)] 1" galvanized steel woven wire fabric lath, metal lath, and two layers of Grade D Kraft building paper or a combination of insulation board and 60-minute water resistant building paper (when applied over wood-based sheathing). For one-coat application utilize in accordance with IAPMO ER-455. Installation of wire mesh or lath and building paper

shall be in accordance with ASTM C926 or local governing building codes. Control joints should be installed to limit sections to no more than 144 ft² (13 m²), or at a height/width ratio of 2.5 : 1.

#### ONE-HOUR FIRE RESISTIVE WALL ASSEMBLIES

There are 4 wall configurations approved as 1-hour fire resistive wall assemblies. Do not proceed with construction without consulting IAPMO ER-455.

1. The first assembly uses 5/8" (15.9 mm) Type X gypsum wallboard on the interior face and 5/8" (15.9 mm) Type X gypsum wallboard on the exterior face. The framing can be constructed of 2" x 4" wood studs spaced 24" (610 mm) oc maximum or minimum #16 gauge galvanized steel studs spaced 24" (610 mm) oc maximum. A weather resistive barrier, lath and One Coat FRS are then applied to the exterior face.

2. The second assembly uses 5/8" (15.9 mm) Type X gypsum wallboard with Kraft-paper-faced, 3 1/2" (89 mm) thick, R-11 fiberglass batt-insulation installed in the cavity of the wall. One-layer minimum of 7/16" (11.1 mm) plywood or OSB sheathing shall then be applied to the exterior face. The framing can be constructed of 2" x 4" wood studs spaced 24" (610 mm) oc maximum or minimum #16 gauge galvanized steel studs spaced 24" (610 mm) oc maximum. A weather resistive barrier, lath and One Coat FRS are then applied to the exterior face.

3. The third assembly uses 5/8" (15.9 mm) Type X gypsum wallboard with Kraft paper-faced, 3 1/2" (89 mm) thick, R-11 fiberglass batt insulation installed in the cavity of the wall. One-layer minimum of 7/16" (11.1 mm) plywood or OSB sheathing shall then be applied to the exterior face. Install a weather resistive barrier, then Type I EPS insulation board with a density of 1 pcf (16.02 kg/m³) over the sheathing. The framing can be constructed of 2" x 4" wood studs spaced 16" (406 mm) oc maximum or minimum #16 gauge galvanized steel studs spaced 16" (406 mm) oc maximum. The lath and One Coat FRS are then applied to the exterior face.

4. The fourth assembly uses 5/8" (15.9 mm) Type X gypsum wall board on the interior face with optional 3-1/2-inch-thick, R-11 glass fiber or mineral wool batts or blankets placed between the studs. The outside face has foam insulation board that is applied over the WRB to open studs and fastened into place.

#### ACCESSORIES

- Insulation boards should be fastened to the studs with approved fastening fixtures, as governed by local or national building codes. The maximum spacing of the nails, screws or mechanical fasteners should not exceed 12" (305 mm) unless otherwise controlled by the codes. All fasteners must penetrate studs a minimum of 3/4" (19.1 mm) or as otherwise specified by local building codes.
- A variety of different accessories may be needed to provide completely homogeneous exterior cladding with no possibility of water leakage, either at corners, around openings or at the bottom and top of the cladding system. Consult IAPMO ER-455 for details.
- All trim, screeds and corner reinforcement must be galvanized steel or approved plastic.
- Joint sealant - Seal joints with an approved exterior sealant material

where foam edges meet metal or plastic trim, such as with weep bases or dip screeds, and where J metal trim is applied. Sealant must comply with ASTM C834.

## **MIXING**

### **MIXING (Sanded)**

Machine mix in a paddle-type mortar mixer:

1. Add approximately 5.5 quarts (5.2 L) of clean water into the mixer for each 80 lb (36.2 kg) bag.
2. Slowly pour the contents of the bag(s) into the mixer. Mix for 3 - 5 minutes until a firm, workable consistency is achieved. Avoid over-mixing, as this may affect the integrity of the fibers. If more water is needed, add small amounts at a time and continue to mix until desired consistency is achieved.
3. Do not exceed a total volume of 6.5 quarts (6.2 L) of water for each 80 lb (36.2 kg) bag.
4. Prepare only enough mix as can be applied in 1 hour.

### **MIXING (Concentrated)**

Machine mix in a paddle-type mortar mixer:

1. Add approximately 5 gallons (18.9 L) of clean water into the mixer for each 80 lb (36.2 kg) bag.
2. Add approximately 210 lb (95.3 kg) of clean dry plaster sand (ASTM C897).
3. Slowly pour the contents of the bag(s) into the mixer. Mix for 3-5 minutes until a firm, workable consistency is achieved. Avoid over-mixing, as this may affect the integrity of the fibers. Consistency will vary, depending on sand loading and moisture content. If more water is needed, add small amounts and continue to mix until desired consistency is achieved.
4. Do not exceed a total volume of 6 gallons (22.7 L) of water for each 80 lb (36.2 kg) bag of concentrate used.
5. Prepare only enough mix as can be applied in 1 hour.

## **APPLICATION**

1. QUIKRETE® One Coat FRS may be trowel or spray applied. The proper selection of spray equipment is important. Apply stucco onto the metal or wire fabric lath working from bottom to top to achieve a minimum thickness of 3/8" (9.5 mm). Force the stucco through the metal or wire fabric lath so that it fills the gap between the metal or wire fabric lath and wall completely.
2. Using a darby or straight edge, screed the stucco flat

3. After the stucco has lost its sheen, use a hard rubber or wooden float to promote the densification of the brown coat and to provide a surface receptive for finish coat material.

4. For construction details, consult IAPMO ER-455.

## **CURING**

Provide sufficient moisture in the plaster mix or by moist curing to permit continuous hydration of the cementitious materials. The most effective procedure for curing and time between coats will depend on climatic and job conditions.

QUIKRETE® One Coat FRS may be water cured with a fine mist per ASTM C926 once it has achieved final set. During hot and dry conditions, additional precautions may be necessary, including more frequent spraying or the erection of barriers to deflect sunlight and wind. Do not apply when weather is forecast to be above 100 degrees F (38 degrees C) or below 40 degrees F (4 degrees C) within 24 hours without adopting the required hot or cold weather precautions. QUIKRETE® One Coat FRS and QUIKRETE® One Coat FRS Concentrated do not require the addition of any other material, such as coloring compounds, calcium chloride, soaps, air entraining admixtures, polymers, etc. Such additions will void any warranty and result in a violation of code conditions.

## **PRECAUTIONS**

In cool weather, use warm water to speed the setting time. Do not apply when temperatures are expected to fall below 40 degrees F (4 degrees C) within 24 hours. Protect from rain, snow and freezing for 48 hours after application.

During hot weather, work during cool times of the day, and use cold water to slow down the setting time. Keep cementitious substrates, such as concrete masonry block and concrete, damp prior to application. Do not apply when temperatures are above 100 degrees F (38 degrees C).

## **WARRANTY**

NOTICE: Obtain the applicable LIMITED WARRANTY: at [www.quikrete.com/product-warranty](http://www.quikrete.com/product-warranty) or send a written request to The Quikrete Companies, LLC, Five Concourse Parkway, Atlanta, GA 30328, USA. Manufactured under the authority of The Quikrete Companies, LLC. © 2020 Quikrete International, Inc.

## Decowall One Coat FRS Concentrate



### TECHNICAL DATA

REPORT	TEST METHOD	TEST CRITERIA	TEST RESULTS
<b>Compressive Strength</b>	ASTM C-109	7 Day	1380 psi
		28 Day	2100 psi
<b>Tensile Strength</b>	ASTM C-307	28 Day	230 psi
<b>Flexural Strength</b>	ASTM C-580	28 Day	425 psi
<b>Water Absorption</b>	ASTM C-413		6.3%

### SURFACE PREPARATION

Surfaces must be clean, dry, and free of frost, damage and all bond-inhibiting materials, including dirt, efflorescence, form oil and other foreign matter. Damaged sheathing must be removed and replaced.

Avoid application over irregular surfaces.

### MIXING

Mix approximately (5-6.5) quarts (4.7-6.2 L) of clean, potable water per 80 lb. (36.3 kg) bag of Decowall One Coat FRS Concentrate with the proper amount of clean sand conforming to ASTM C-144 or C-897.

Mix with a clean, rust-free electric drill and blend to a lump-free, smooth consistency.

### APPLICATION

**Decowall One Coat FRS Concentrate 80 lb. (36.3 kg) bag:** Add required 200- 240 lbs. of stucco sand meeting ASTM C-926 Standard Specification for application of Portland Cement based plaster.

**Deco-Lath:** Excellent alternative to conventional sand/cement stucco. Decowall One Coat FRS Concentrate completely replaces the need for conventional (3) coat stucco over Deco-Lath. It can be used as a one coat application over Deco-Lath with a double back skim coat and texture.

**Masonry:** Can be used over all types of masonry surfaces, including precast.

**Exterior Insulation Finish System:** Can be used as an excellent surface coating over approved types of insulation materials when used in conjunction with a Decoplast Weather Resistive Barrier Membrane and Deco-Lath per ASTM C-1063 (Optional- Expanded Metal Lath).

#### Curing/Drying:

Dries within 24 hours under normal drying conditions [70°F (21°C), 50% RH]. Allow additional drying time during cold, humid, or wet weather until insulation board is fully adhered before rasping, and before application of primer or finish to hardened Decowall One Coat FRS Concentrate. Protect from rain, freezing and continuous high humidity until completely dry. Decoplast recommends using Decoplast Primer prior to application of finish.

#### Clean Up:

Clean tools and equipment with water immediately after use. Dried material can only be removed mechanically.

*Decowall One Coat Fiber Reinforced Stucco Concentrate is a formulation of Portland cement, engineered fibers and admixtures. Used in combination with proper sand, it provides a traditional scratch and brown coat that is directly applied over untreated concrete, CMU, brick and Deco-Lath (Optional - Expanded Metal Lath). It produces a superior crack resistant stucco.*

#### Coverage

80 lb. Bag — Decoplast One Coat Fiber Reinforced Concentrate with sand added: Total (240- 280) lb will cover:

220 ft² at 1/8"

110 ft² at 1/4"

75 ft² at 3/8"

#### Packaging

80 lb. bag (36.3 kg)

#### Shelf Life

24 months, if properly stored and sealed.

#### Storage:

Protect from extreme heat [90°F (32° C)], freezing and direct sunlight.



## Decowall One Coat FRS Concentrate



### LIMITATIONS

Use Decowall One Coat FRS Concentrate only when surface and ambient temperatures are above 40°F (4°C) during application and drying period.

Sloped surfaces: Refer to Decoplast details.

Decowall One Coat FRS Concentrate should not be used on weather-exposed horizontal or below grade surfaces or where immersion in water may occur.

Prevent rapid loss of moisture from exposure to direct sun, wind and high temperatures.

Decowall One Coat FRS Concentrate should not be used as a finish coating.

### HEALTH AND SAFETY

#### Health Precaution

Contains Portland cement. Avoid breathing dust. As with any chemical construction product, exercise care when handling.

#### DANGER!

Causes serious eye damage and/or skin irritation. May cause an allergic skin reaction, respiratory irritation, drowsiness or dizziness.

#### Safety Precaution

Wash hands thoroughly after handling. Wear protective gloves/protective clothing/eye protection/face protection.

#### First Aid:

**EYE CONTACT:** Immediately flush eyes with plenty of water for at least 15 to 20 minutes. Ensure adequate flushing of the eyes by separating the eye lids with fingers. Get immediate medical attention.

**SKIN CONTACT:** Immediately wash skin with plenty of soap and water for at least 15 to 20 minutes, while removing contaminated clothing and shoes. Get medical attention if irritation develops or persists.

**INHALATION:** If inhaled, remove to fresh air. If not breathing give artificial respiration or give oxygen by trained personnel. Seek medical attention immediately.

**INGESTION:** If swallowed, do NOT induce vomiting. Call a physician or a poison control center immediately. Never give anything by mouth to an unconscious person.

#### Spills

Contain and collect in an appropriate container. Uncured material may be removed with water.

#### Disposal

Dispose of in accordance with local, state or federal regulations.

#### Warning

KEEP CONTAINER CLOSED WHEN NOT IN USE. KEEP OUT OF THE REACH OF CHILDREN. NOT FOR INTERNAL CONSUMPTION. FOR INDUSTRIAL USE ONLY. Consult the Safety Data Sheet (SDS) for further health and safety information.

#### LIMITED WARRANTY

This product is subject to a written limited warranty. Refer to Decoplast Specifications for more complete information on proper use and handling of this product.



## Decoplast Primer

64 Standard Colors / Custom Colors

### TECHNICAL DATA

REPORT	TEST METHOD	TEST CRITERIA	TEST RESULTS
Surface Burning	ASTM E-84	< 25 Flame Spread	Pass
		< 450 Smoke Developed	Pass

*Decoplast Primer is used for priming prepared concrete, masonry, plaster, EIFS base coat, or drywall surfaces prior to application of Decoplast Finishes and Coatings.*

### Coverage

800-1000 ft<sup>2</sup> (74.3-92.9 m<sup>2</sup>) per pail applied at 4 to 6 wet mils per coat

### FEATURES

### BENEFITS

<b>Acrylic Based</b>	Excellent adhesion; finish coat adhesion improvement
<b>Tinted for Finish</b>	Color uniformity improvement
<b>Substrate Absorption</b>	Improves coverage, water-resistance, and reduces possible efflorescence
<b>Non Vapor Barrier</b>	Allows substrate to breathe naturally
<b>Water-Based</b>	Safe, non-toxic; cleans up with water
<b>Low VOC</b>	Safe for workers and the environment

### Packaging

5 gal pail (19L) 47.5 lbs / 21.6 kg per pail

### Shelf Life

24 months, if properly sealed and stored.

### Storage

Store off the ground in a cool/dry area. Protect from extreme heat [90°F (32°C)], moisture and direct sunlight.

### SURFACE PREPARATION

Surfaces must be clean, dry, and free of frost, damage, releasing agents, including dirt, efflorescence, form oil and other foreign matter. Loose or damaged material must be removed by water blasting, sandblasting or mechanical wire brushing and repaired. Avoid application over irregular surfaces. Resurface, patch or level surfaces to required tolerance and smoothness with appropriate Decoplast leveling materials.

Pressure washing is a recommended means of surface preparation. Follow necessary safety precautions and adjust pressure to avoid damage to the underlying substrate or substrate condition. For mold, algae, and mildew removal, treat surfaces with a commercial mildew removal and/or wash product carefully following manufacturer's application and safety directions.



## Decoplast Primer

64 Standard Colors / Custom Colors

### MIXING

Mix with a clean, rust-free electric drill and paddle to a uniform consistency. Close container when not in use. Clean tools with water immediately after use.

### APPLICATION

Apply only to sound and clean, dry, properly prepared surfaces.

#### **Airless Spraying:**

Use airless sprayer with minimum 19 mil tip. Use a starting pressure of 1900 psi and adjust as necessary.

#### **As a primer:**

Apply at 4-6 wet mils per coat. Multiple coats may be required, depending on surface condition.

#### **Curing/Drying Time**

Times assume 70° F (21° C) and 50% relative humidity. Drying time varies with temperature/humidity and surface conditions. Protect installed product from rain, freezing, and continuous high humidity until completely dry.

#### **Clean Up**

Clean all tools and equipment immediately with water. Cured material may be removed by mechanical means.

### LIMITATIONS

- Use Decoplast Primer only when surface and ambient temperatures are above 40°F (4°C) and below 100°F (38°C) during application and drying period.
- Store Decoplast materials in a cool, dry place.
- Sloped surfaces: Refer to Decoplast details.
- Decoplast Primer should not be used on horizontal surfaces unless protected with appropriate Decoplast Finish materials.
- Do not apply Decoplast Primer to frozen surfaces.

### HEALTH AND SAFETY

#### **Health Precaution**

Decoplast Primer is water-based. As with any chemical construction product, exercise care when handling.

#### **WARNING!**

Causes eye and skin irritation.

#### **Safety Precaution**

Wash hands thoroughly after handling. Wear protective gloves/protective clothing/eye protection/face protection.

#### **First Aid:**

**EYE CONTACT:** Immediately flush eyes with plenty of water for at least 15 to 20 minutes. Ensure adequate flushing of the eyes by separating the eye lids with fingers. Get immediate medical attention.

**SKIN CONTACT:** Immediately wash skin with plenty of soap and water for at least 15 to 20 minutes, while removing contaminated clothing and shoes. Get medical attention if irritation develops or persists.

**INHALATION:** If inhaled, remove to fresh air. If not breathing give artificial respiration or give oxygen by trained personnel. Seek medical attention immediately.

**INGESTION:** If swallowed, do NOT induce vomiting. Call a physician or a poison control center immediately. Never give anything by mouth to an unconscious person.

#### **Spills**

Contain and clean with appropriate absorbent materials.

#### **Disposal**

Dispose of in accordance with local, state or federal regulations.

#### **Warning**

KEEP CONTAINER CLOSED WHEN NOT IN USE. KEEP OUT OF THE REACH OF CHILDREN. NOT FOR INTERNAL CONSUMPTION. FOR INDUSTRIAL USE ONLY. Consult the Safety Data Sheet (SDS) for further health and safety information.

#### **LIMITED WARRANTY**

This product is subject to a written limited warranty. Refer to Decoplast Specifications for more complete information on proper use and handling of this product.





## Decoplast Exterior Textured Finishes

Ispica (Freestyle) /Genova (Fine Sand) / San Remo (Coarse Sand)

Trieste (Medium Sand) / Taormina (Fine Swirl) /Graffiato (Medium Swirl)

### TECHNICAL DATA

REPORT	TEST METHOD	TEST CRITERIA	TEST RESULTS
Surface Burning	ASTM E-84	< 25 Flame Spread < 450 Smoke Developed	Pass Pass
Flexibility	ASTM D-522	4" mandrel bend	Pass
Water Vapor Transmission	ASTM E-96	28 days	Pass
Accelerated Weathering	ASTM G-154	2000 hours	Pass; No deleterious effects
Freeze-thaw Resistance	ASTM 2485	60 cycles	No deleterious effects; 90 cycles
Mildew Resistance	ASTM D-3273	No growth @ 28 days	Pass
Salt Spray Resistance	ASTM B-117	300 hours	Pass; No deleterious effects
Water Resistance	ASTM D-2247	14 days	Pass; No deleterious effects
Abrasion Resistance	ASTM D-968	528 qts. sand	No cracking, checking or Loss of film integrity @ 528 qts.
Adhesion	ASTM C-297	28 days	> 90 to concrete
Fire Resistance	ASTM E-119	No effect on fire resistance rating of Existing rated assembly	Pass; Classified UL

*Decoplast Exterior Textured Finishes are a ready-mixed, 100% acrylic based exterior textured coating used as a decorative wall finish over all approved basecoats, prepared concrete, masonry and plaster substrates.*

### Coverage

Decoplast Limestone (Ispica): Varies with technique.

Decoplast Fine Sand Finish (Genova): 130-145 ft<sup>2</sup> (12.1-13.5 m<sup>2</sup>) per pail.

Decoplast Medium Sand Finish (Trieste): 115- 130 ft<sup>2</sup> (10.7-12.1 m<sup>2</sup>) per pail.

Decoplast Coarse Sand Finish (San Remo): 85- 100 ft<sup>2</sup> (7.9-9.3 m<sup>2</sup>) per pail.

Decoplast Fine Swirl Finish (Taormina): 125-140 ft<sup>2</sup> (11.6-13 m<sup>2</sup>) per pail.

Decoplast Medium Swirl Finish (Graffiato): 130-145 ft<sup>2</sup> (12.1-13.5m<sup>2</sup>) per pail.

\*Coverages may vary depending on application technique and surface conditions

### Packaging

5 gal pail (19L) 68.5 lbs / 31 kg per pail

### Shelf Life

24 months, if properly sealed and stored.

### Storage

Store off the ground in a cool/dry area. Protect from extreme heat [90°F (32°C)], moisture and direct sunlight.

### FEATURES

### BENEFITS

Integral Color	Reduced recoating and maintenance; Unlimited Color Options
Weather Resistant	Repulsion of water and resistance of wind-driven rain
Breathable	Resists blistering, peeling and flaking; breathes naturally



## Decoplast Exterior Textured Finishes

Ispica (Freestyle) / Genova (Fine Sand) / San Remo (Coarse Sand)

Trieste (Medium Sand) / Taormina (Fine Swirl) / Graffiato (Medium Swirl)

### SURFACE PREPARATION

**Concrete and masonry surfaces:** Surfaces must be clean, dry, and free of frost, damage, releasing agents, including dirt, efflorescence, form oil and other foreign matter. Loose or damaged material must be removed by water blasting, sandblasting or mechanical wire brushing and repaired. Avoid application over irregular surfaces. Resurface, patch or level surfaces to required tolerance and smoothness with appropriate Decoplast leveling materials.

#### Exterior Insulation and Finish

**Decoplast Systems (EIFS):** Surface must be free of all releasing agents.

**Gypsum wallboard surfaces:** Wallboard must be taped and fasteners spotted with joint compound. Surface must be free of dust, dirt and releasing agents. Prime with appropriate Decoplast Primer.

**Decoplast recommends priming cementitious substrates using Decoplast primer prior to application of finish.**

### MIXING

Mix with a clean, rust-free electric drill and paddle to a uniform consistency. A small amount of clean water may be added to aid workability. Limit addition of water to amount needed to achieve the finish texture. Additives are not permitted. Close container when not in use. Clean tools with water immediately after use.

### APPLICATION

Apply only to sound and clean, dry, properly prepared surfaces.

**Trowel:** Apply Decoplast Textured Finish with a clean stainless steel trowel to a rough thickness slightly more than the largest aggregate size. Apply the finish keeping thickness uniform. Maintain a wet edge on Decoplast Textured Finish by applying and texturing continually over the wall surface. Work Decoplast Textured Finish to corners, joints or other natural breaks. Do not allow material to set up within an uninterrupted wall area. Achieve final texture by floating with the appropriate trowel.

Note: Decoplast Ispica (Freestyle) Finish requires two coats.



## Decoplast Exterior Textured Finishes

Ispica (Freestyle) / Genova (Fine Sand) / San Remo (Coarse Sand)

Trieste (Medium Sand) / Taormina (Fine Swirl) / Graffiato (Medium Swirl)

### APPLICATION Continued

**Spray:** Decoplast Textured Finishes can be applied with a gravity-feed sprayer, texture spray pump machine, or other appropriate equipment. To ensure full coverage of the surface, apply in an even coat.

IMPORTANT: ALWAYS check color for proper match.

Apply coating continuously, maintain a wet edge to eliminate cold joints. Work Decoplast Textured Finish to corners, joints or other natural breaks. Avoid application in direct sunlight. Protect installed product from rain, freezing, and continuous high humidity until completely dry.

#### Curing/Drying

Decoplast Textured Finishes dry within 24 –72 hours under normal conditions [70°F (21°C), 50% RH]. Drying time varies with temperature, humidity and surface conditions.

#### Clean Up

Clean tools and equipment with water immediately after use. Remove dried material from tools and equipment mechanically.

### LIMITATIONS

Use Decoplast Textured Finishes only when surface and ambient temperatures are above 40°F (4°C) and below 100°F (38°C) during application and drying period.

Store Decoplast materials in a cool, dry place.

Sloped surfaces: Refer to Decoplast details.

Decoplast Textured Finishes should not be used on weather-exposed horizontal or below grade surfaces or where immersion in water may occur.

Do not apply Decoplast Textured Finish to frozen surfaces.

### HEALTH AND SAFETY

#### Health Precaution

Decoplast Textured Finishes are water-based. As with any chemical construction product, exercise care when handling.

#### WARNING!

Causes eye and skin irritation.

#### Safety Precaution

Wash hands thoroughly after handling. Wear protective gloves/protective clothing/eye protection/face protection.

#### First Aid:

**EYE CONTACT:** Immediately flush eyes with plenty of water for at least 15 to 20 minutes. Ensure adequate flushing of the eyes by separating the eye lids with fingers. Get immediate medical attention.

**SKIN CONTACT:** Immediately wash skin with plenty of soap and water for at least 15 to 20 minutes, while removing contaminated clothing and shoes. Get medical attention if irritation develops or persists.

**INHALATION:** If inhaled, remove to fresh air. If not breathing give artificial respiration or give oxygen by trained personnel. Seek medical attention immediately.

**INGESTION:** If swallowed, do NOT induce vomiting. Call a physician or a poison control center immediately. Never give anything by mouth to an unconscious person.

#### Spills

Contain and clean with appropriate absorbent materials.

#### Disposal

Dispose of in accordance with local, state or federal regulations.

#### Warning

KEEP CONTAINER CLOSED WHEN NOT IN USE. KEEP OUT OF THE REACH OF CHILDREN. NOT FOR INTERNAL CONSUMPTION. FOR INDUSTRIAL USE ONLY. Consult the Safety Data Sheet (SDS) for further health and safety information.

#### LIMITED WARRANTY

This product is subject to a written limited warranty. Refer to Decoplast Specifications for more complete information on proper use and handling of this product.





Your Source for Exterior Insulation & Finish Systems

# STANDARD COLORS



			
2011 Jersey Cream	2012 Practical Beige	2013 Latte	2014 Hopsack
			
2015 Ivoire	2016 Whole Wheat	2017 Bagel	2018 Camelback
			
2019 Antique White	2020 Believable Buff	2021 Sand Dollar	2022 Nomadic Desert
			
2023 Navajo White	2024 Softer Tan	2025 Cherish Cream	2026 Sand Trap
			
2027 Nearly Peach	2028 Sweet Orange	2029 Warming Peach	2030 Interface Tan
			
2031 Unfussy Beige	2032 Likeable Sand	2033 Soft Apricot	2034 Baked Clay
			
2035 Hush White	2036 Spun Sugar	2037 Constant Coral	2038 Moroccan Brown
			
2039 White Dogwood	2040 Fading Rose	2041 Pressed Flower	2042 Arresting Auburn

			
2043 Pacer White	2044 Kiln Beige	2045 Macadamia	2046 Dapper Tan
			
2047 Popular Grey	2048 Lightweight Beige	2049 Totally Tan	2050 Deep Tan
			
2051 Torque White	2052 Agreeable Grey	2053 Bonafide Beige	2054 Balanced Beige
			
2055 Shoji White	2056 Accessible Beige	2057 Mindful Grey	2058 Intellectual Grey
			
2059 Macintosh	2060 Sagey	2061 Greening	2062 Surf Green
			
2063 Window Pane	2064 Passive	2065 Dorian Grey	2066 Grey Matters
			
2067 Respite	2068 Anew Grey	2069 Unusual Grey	2070 Cityscape
			
2071 Early Dawn	2072 Network Grey	2073 Software	2074 Bright White

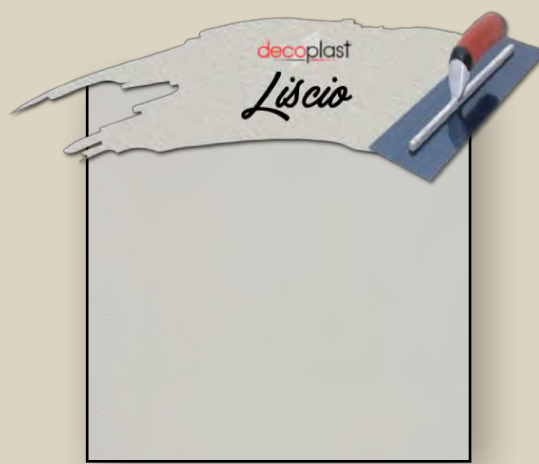
## CUSTOM COLORS AVAILABLE

These standard finish colors are representative of the unlimited color choices available. The actual project's color and texture selection should be made from a sample prepared by a Decoplast certified applicator.

The intent of these color chips is to provide a basic representation of Decoplast finish colors. This color chart is offered only as a sales aid to show a range of color variations. These color chips shall not be used for final color selection as color differences may occur between the sample material used and the finished product. **Actual color selection should be made from a LARGER SAMPLE of each finish texture and color to be used on the project.** Samples should be prepared by a trained certified applicator/contractor using the same tools and techniques proposed for the actual installation.

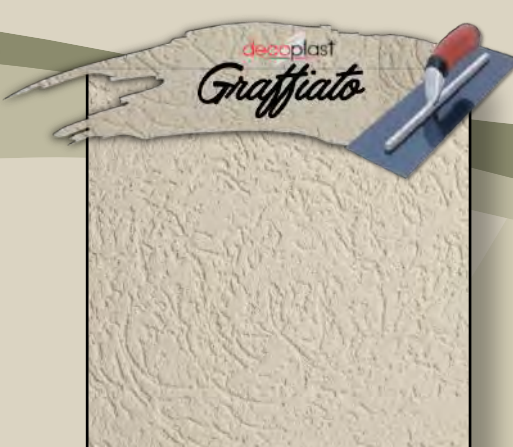


# decoplast® The Finest Finishes



## Consistency & Difference

Our engineers have meticulously designed and constantly enhance the most hi tech formulas in the industry. With great hang times, superb consistency and superior adhesion, our materials are some of the best around. Once you try them, you will see the DECO difference.



## DECOPLAST LIMITED PRODUCT WARRANTY

**Warranty Reference Number:**

**Project Name:**

**Project Address:**

**Products:**

**Warranty Period:**

**Owner:**

**Owner Address:**

**General Contractor:**

**General Contractor Address:**

**Applicator:**

**Applicator Address:**

**Distributor:**

**Distributor Address:**

**Distributor Representative:**

**Square Footage:**

**Completion Date:**

**Warranty Issue Date:**

Greenmaker Industries of Connecticut, LLC ("GMI") warrants for the Warranty Period stated above, from the completion date stated above, that the Product(s) identified above ("Decoplast Products"), when properly applied in strict accordance with Decoplast instructions contained in its Product Bulletins for the Products (in force at the time of installation), by an applicator qualified by the general contractor, owner or other party with whom the applicator holds its contract, and properly integrated into building construction in accordance with sound building design and construction practices, shall be free from defects in manufacture for the period specified above.

No warranty whatsoever is made with respect to materials or components that are not sold or manufactured by GMI and GMI makes no warranty whatsoever with respect to aesthetics, design, or engineering of the structure into which Decoplast Products are incorporated, or with respect to the workmanship or application of any Decoplast Products.

GMI makes no warranty, express or implied, with respect to Decoplast Products, except as expressly stated herein. **THIS LIMITED WARRANTY IS EXCLUSIVE AND IN LIEU OF ALL OTHER WARRANTIES OF ANY NATURE WHATSOEVER EXCEPT TITLE, WHETHER ORAL, WRITTEN, EXPRESS OR IMPLIED OR IMPOSED BY LAW, INCLUDING IN LIEU OF THE IMPLIED WARRANTIES OF MERCHANTABILITY AND FITNESS FOR ANY PARTICULAR PURPOSE AND ANY WARRANTY AGAINST INFRINGEMENT OR THE LIKE.**

GMI also shall not be responsible for damage caused in whole or in part by an act of God, natural phenomenon or physical abuse, including but not limited to on account of a falling object, projectile, fire, earthquake, flood, hail, tornado, lightning, hurricane, pest, chemical fume, vandalism, civil disobedience, or war, or for damage caused by remodeling or renovation, structural movement, insufficient or defective waterproofing between the Decoplast Products and non-Decoplast material, or any other damage not solely caused by a defect in manufacture of Decoplast Products as covered under this Limited Warranty.

GMI shall not be responsible for incidental or consequential damages as such terms are defined in Section 2-715 of the Uniform Commercial Code or any other applicable or successor law defining said terms under any circumstance, regardless of their cause, and shall not be responsible for indirect, special, or punitive damages, also regardless of their cause. GMI's sole responsibility and liability under this Limited Warranty shall be to supply replacement materials for any portion of Decoplast Products warranted hereunder, which violates the express terms of this Limited Warranty. In no case shall the cost of the replacement materials exceed the original purchase price of the Decoplast manufactured Products, less an allowance for depreciation.



This Limited Warranty provides the sole remedy to the purchaser and any other person or entity claiming rights against GMI arising from or relating to the Decoplast Products. No claim independent of this Limited Warranty, such as negligence or breach of contract, shall be made by the purchaser of Decoplast Products or any other person or entity claiming rights against GMI arising from or relating to Decoplast Products.

This Limited Warranty may not be transferred or assigned except within the stated Warranty Period to the contractor, general contractor, owner, and any subsequent owner of the structure into which Decoplast Products shall be incorporated. Since the Decoplast Products are building materials and are not intended to be sold to a consumer, except as part of real estate or as a major addition thereto, this Limited Warranty is not intended to apply to any consumer, as such term is defined by the Magnuson-Moss Warranty Act.

GMI shall not have any obligation under this Limited Warranty unless the party making a proper claim under it notifies GMI in writing at 697 Oakwood Avenue, West Hartford, CT 06110, ATTN: Warranty Services, within 30 days of when the party discovered or should have discovered the alleged damage which is the subject of the claim.

GMI shall be allowed a reasonable period of time to investigate the alleged damage, including by removing samples, and to perform any testing deemed necessary to determine the cause(s) of the alleged damage. The Owner must provide GMI with a reasonable opportunity to investigate the claim and any alleged failure of the Products to perform as warranted herein. The Owner shall have the sole responsibility, at the Owner's cost and expense, to provide the GMI with free and full access to the installed Products during regular business hours for purposes of the investigation, including obtaining necessary approval and/or releases from building occupants who may be affected by the investigation and/or by any remedy GMI may provide under this warranty. GMI shall not be responsible for removal of any materials which may cover the Products, or any costs associated with removing or replacing any such materials. The party making the claim under this Limited Warranty shall provide and cause any temporary repairs to be accomplished in a timely manner to prevent further damage until a full repair is completed.

GMI shall not have any obligation under this Limited Warranty where the party making a claim under it failed to properly maintain the Decoplast Products, or other elements of construction. Such maintenance shall include but not be limited to repair of cracks or mechanical damage, periodic recoating, and maintenance of roofing, flashing, sealants, windows, doors and other penetrations through the wall assembly, paint on windows, seals at window cracks and seams, and any other area of water entry or potential water entry through windows or other components of construction, in such a manner that these elements or components remain watertight and leak proof. The party making a claim under this Limited Warranty acknowledges that GMI has a maintenance and repair guide for buildings finished with Decoplast Products which is available upon request.

This Limited Warranty may not be modified except in writing by an authorized representative of GMI. Failure by GMI to enforce any term or condition of this Limited Warranty shall not be construed to be a waiver of same. Issuance of this Limited Warranty does not in any way suggest that a party making a claim under it on a later date may be entitled to some benefit.

GMI does not practice Engineering or Architecture. Neither the issuance of this Limited Warranty nor any review of construction, plans, specifications, or details by GMI shall constitute a warranty by GMI of such construction, plans, specifications, or details, or constitute an extension of the terms and conditions of this Limited Warranty.

This Limited Warranty is null and void unless GMI has received payment in full for Decoplast Products.

This Limited Warranty shall be interpreted under the terms of the Uniform Commercial Code or a successor law thereto.

**REQUEST FOR WARRANTY ISSUANCE MUST BE MADE PROMPTLY FOLLOWING THE DATE OF PROJECT SUBSTANTIAL COMPLETION. THE COMPANY RESERVES THE RIGHT, IN ITS SOLE DISCRETION, TO REFUSE A REQUEST FOR ISSUANCE IF SUCH REQUEST IS NOT MADE WITHIN A REASONABLE TIME FOLLOWING THE DATE OF SUBSTANTIAL COMPLETION.**



697 Oakwood Avenue, West Hartford, CT 06110  
voice: 860.761.2830 fax: 860.761.2831  
[www.decoplast.com](http://www.decoplast.com)